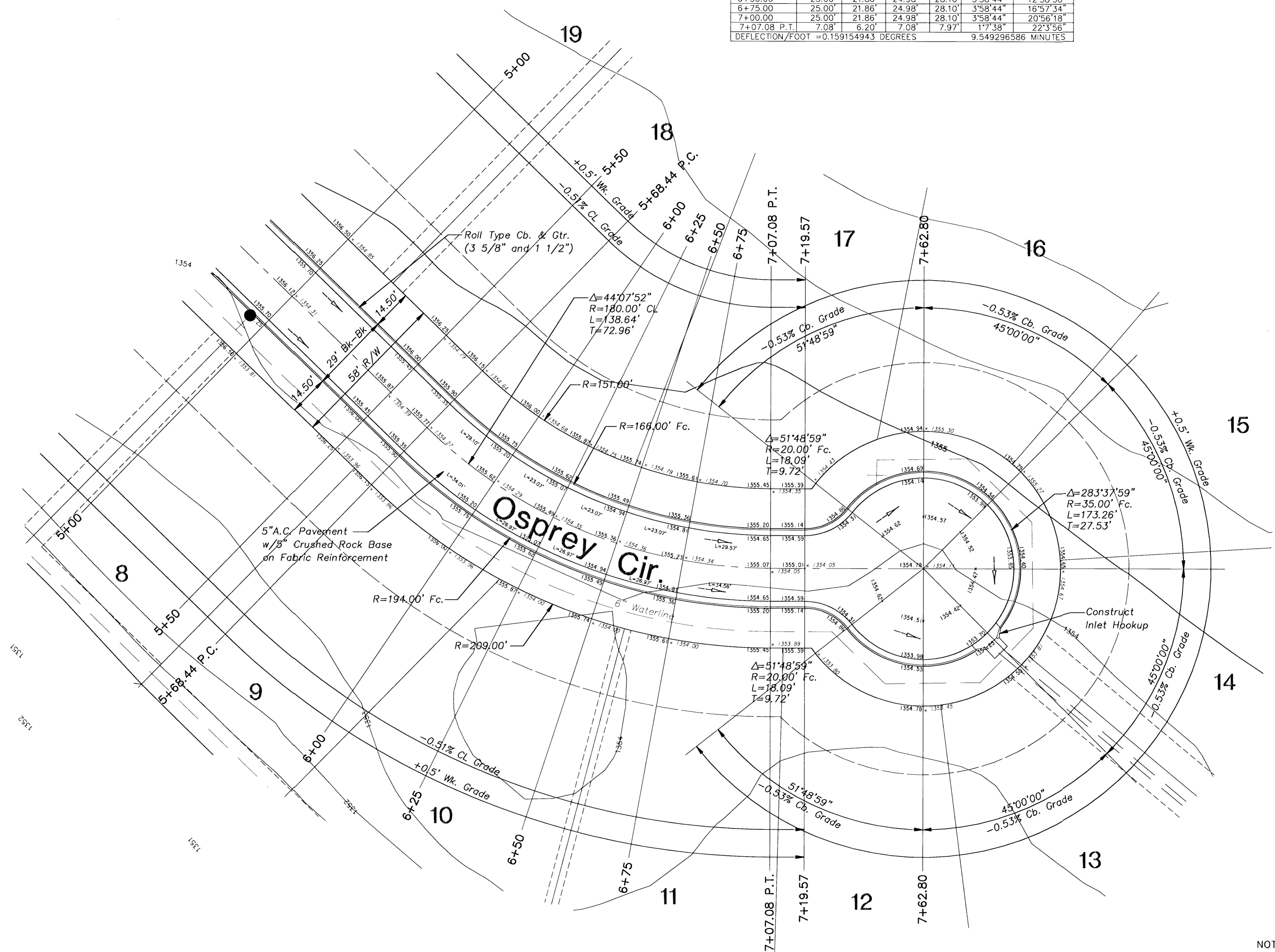
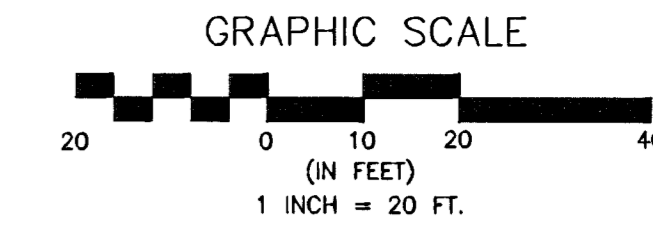


1355

$\Delta = 44^{\circ}7'52''$   $L = 138.64'$   $R = 180.00'$   $T = 72.96'$

CURVE TABLE BASED ON CL RADIUS						
STATION	CL ARC	CHORD LENGTH		DEFLECTION		TOTAL DEFLECTION
		B' LT.	B' RT.	B' RT.	DEFLECTION	
5+68.44 P.C.						
5+75.00	6.56'	5.74'	6.56'	7.38'	1'2"39"	1'2"39"
6+00.00	25.00'	21.86'	24.98'	28.10'	3'58"44"	5'1"23"
6+25.00	25.00'	21.86'	24.98'	28.10'	3'58"44"	9'0"6"
6+50.00	25.00'	21.86'	24.98'	28.10'	3'58"44"	12'58"50"
6+75.00	25.00'	21.86'	24.98'	28.10'	3'58"44"	16'57"34"
7+00.00	25.00'	21.86'	24.98'	28.10'	3'58"44"	20'56"18"
7+07.08 P.T.	7.08'	6.20'	7.08'	7.97'	1'7"38"	22'3"56"
DEFLECTION/FOOT = 0.159154943 DEGREES				9.549296586 MINUTES		



Revision	
No.	By
Date	Approved
FALCON FALLS - PHASE 1 STREET IMPROVEMENTS OSPREY CIRCLE <b>CITY OF WICHITA, KANSAS</b> NEIL D. CABLE, P.E. - CITY ENGINEER C.O.W. Project # 472-83887 O.C.A. # 765782	
<b>POE &amp; ASSOCIATES OF KANSAS, INC.</b> CONSULTING ENGINEERS 900 E. Central, Suite 200 ■ Wichita, KS 67202-4242 Phone 316/685-4114 ■ FAX 316/685-4444	
<b>FINAL</b> Designed By: J. Ubert / B. Kulla Drawn By: B. Kulla P.O. Job No.: 1748A Date: May 2003	

NOTE:  
 All top of curb grades are to top of combined curb and gutter. 0.25' must be subtracted from top of curb elevations to top of roll curb.