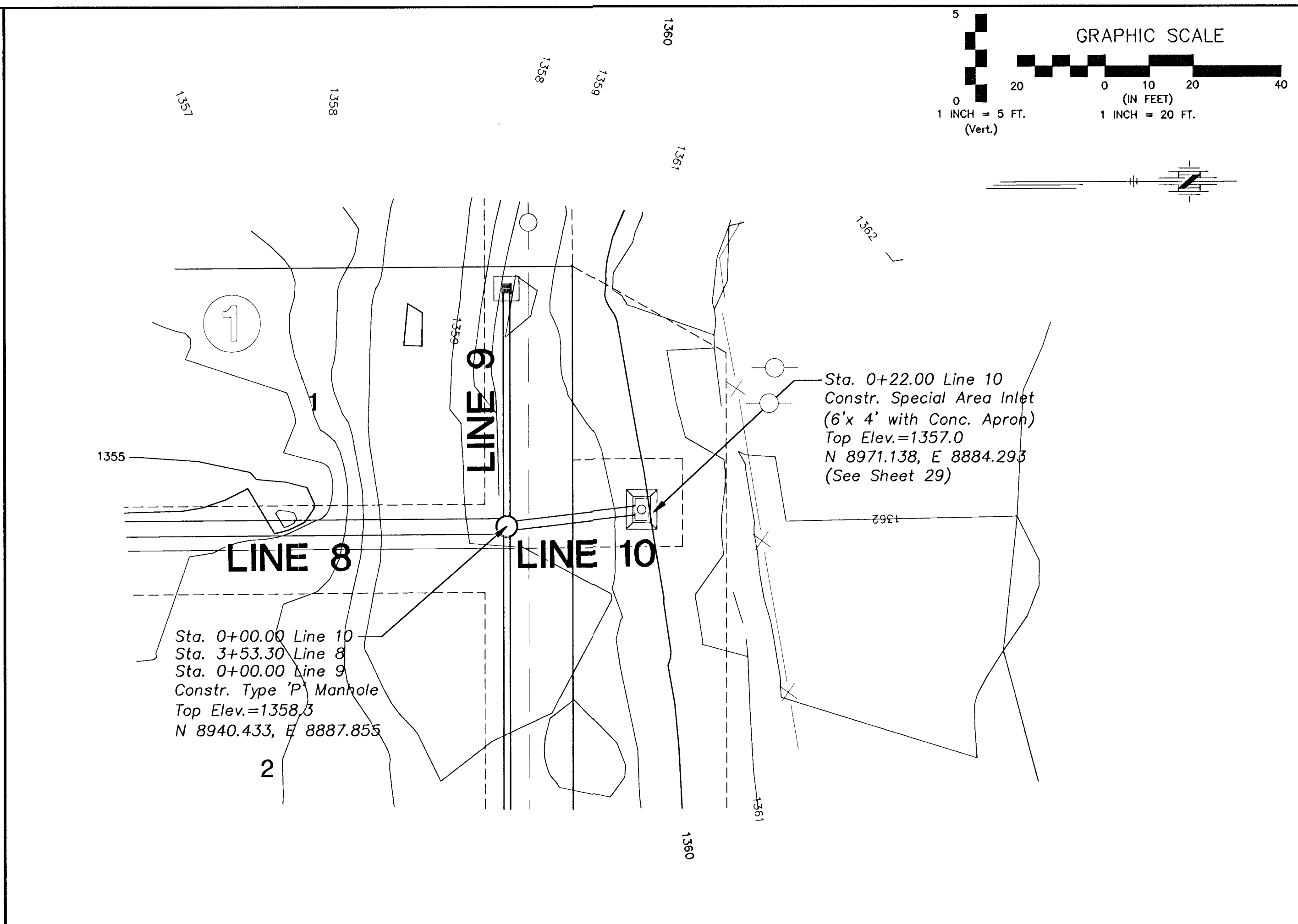
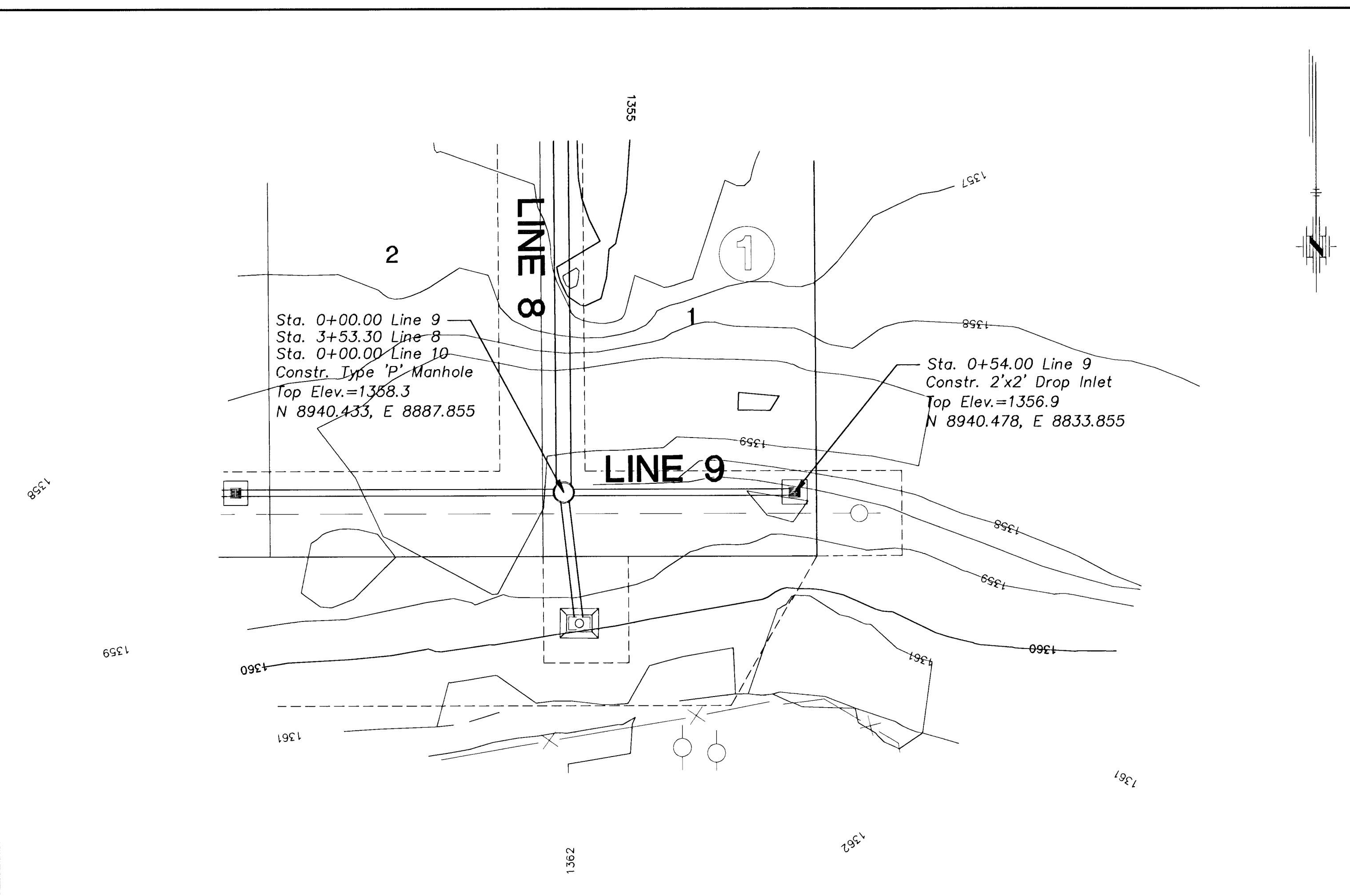
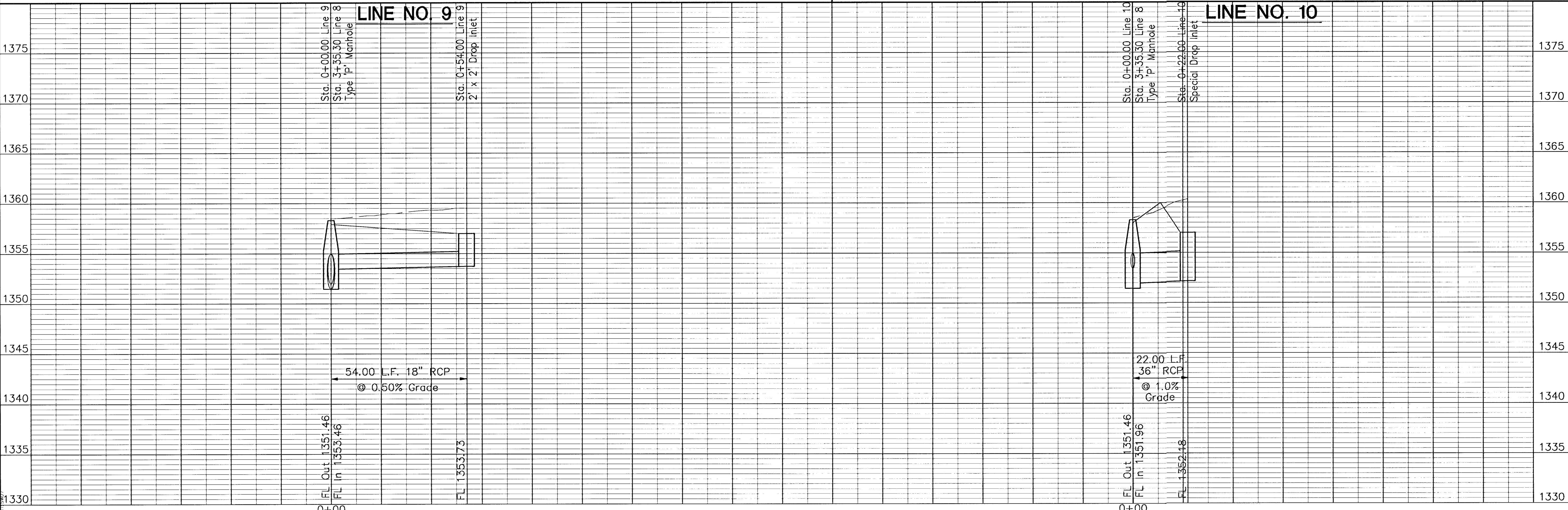


G:\APPS\DCAP\1748\BASE.dwg Wed Jun 18 11:22:56 2003



<p><b>POE &amp; ASSOCIATES OF KANSAS, INC.</b>          CONSULTING ENGINEERS          5940 E. Central, Suite 200 • Wichita, KS 67208-4292          Phone 316/685-4114 • FAX 316/685-4444</p>	
<p><b>FINAL</b></p>	
<p>Designed By: J. Ubert / B. Kulla          Drawn By: B. Kulla          P.O. Job No.: 1748A          Date: May 2003</p>	<p>FALCON FALLS - PHASE 1          STREET IMPROVEMENTS          LINE No. 9 &amp; 10  <b>CITY OF WICHITA, KANSAS</b>          NEL D. CABLE, P.E. - CITY ENGINEER          C.O.W. Project # 472-83687 O.C.A. # 765782</p>
<p>No. <input type="checkbox"/></p>	<p>Date <input type="checkbox"/></p>
<p>By <input type="checkbox"/></p>	<p>Approved <input type="checkbox"/></p>
<p>Revision <input type="checkbox"/></p>	