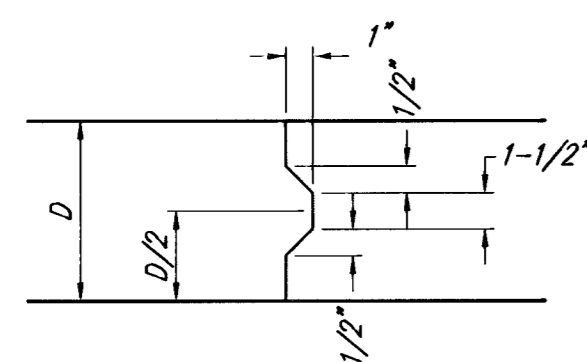
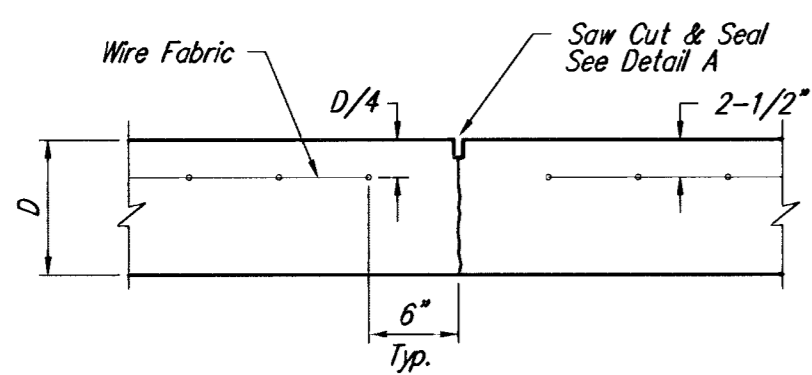


EXPANSION JOINT

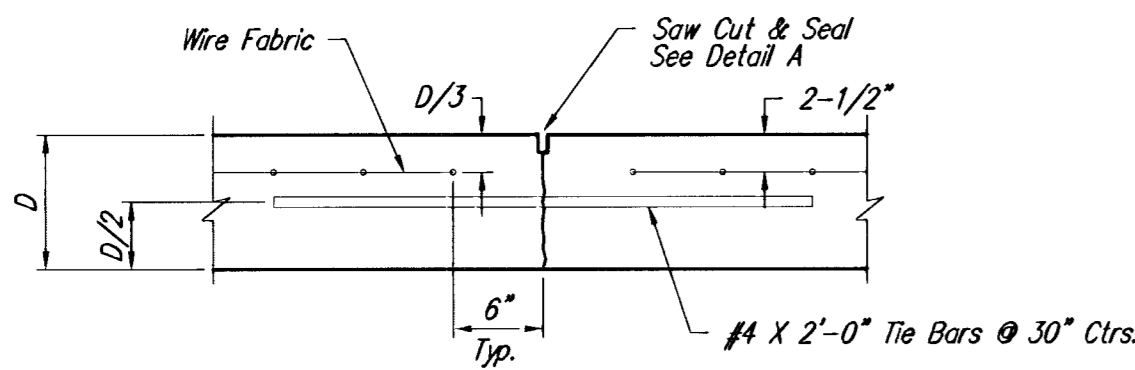
NOTE: Extra Thickness to be Subsidiary to Price of Square Yards Pavement



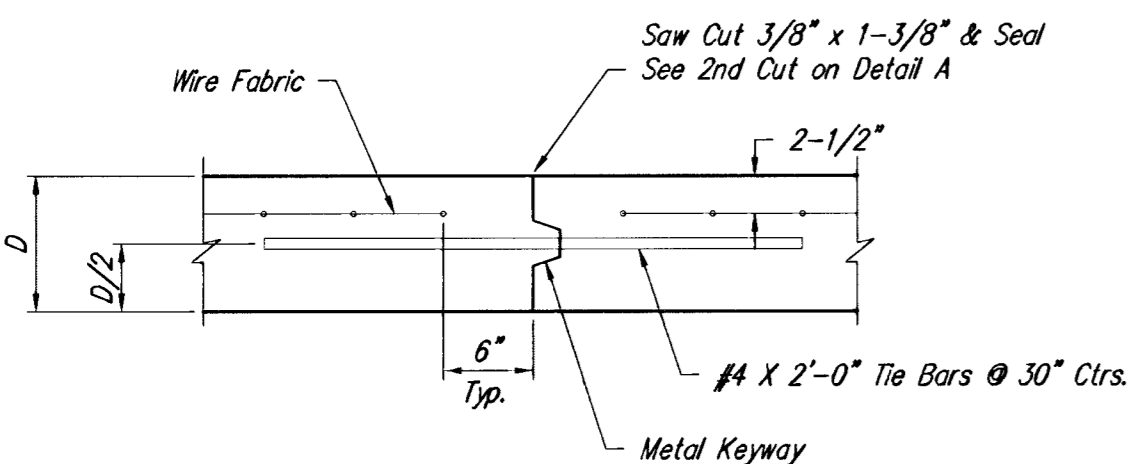
KEYWAY DETAIL



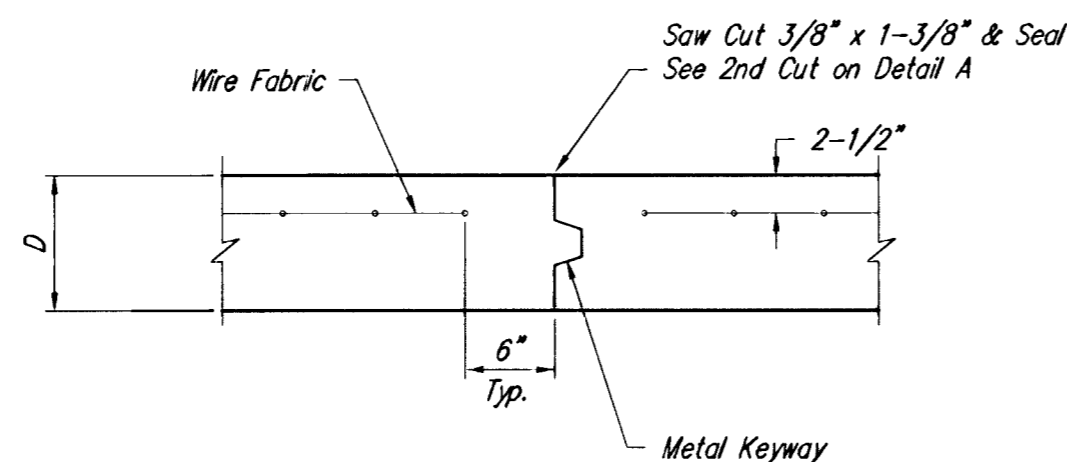
CONTRACTION JOINT DETAIL (C.J.)



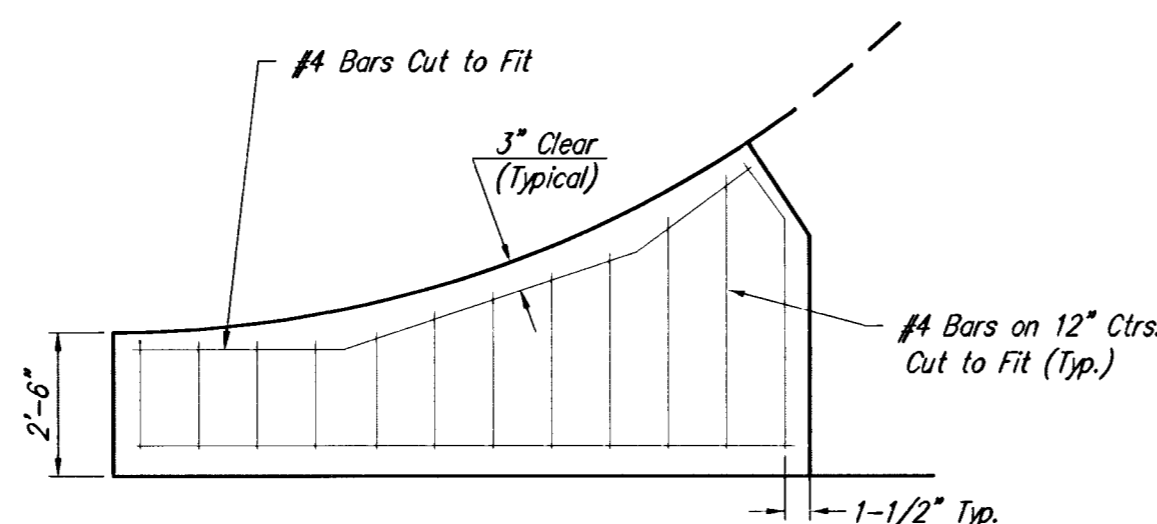
LONGITUDINAL JOINT DETAIL (L.J.)



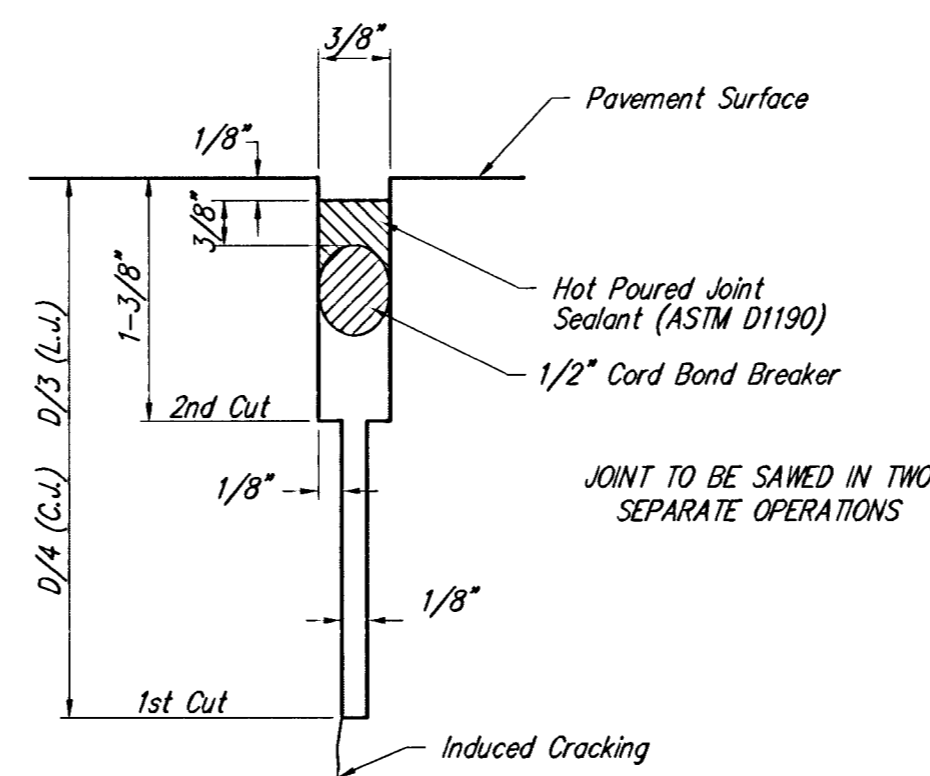
OPTIONAL LONGITUDINAL JOINT DETAIL (L.J.)



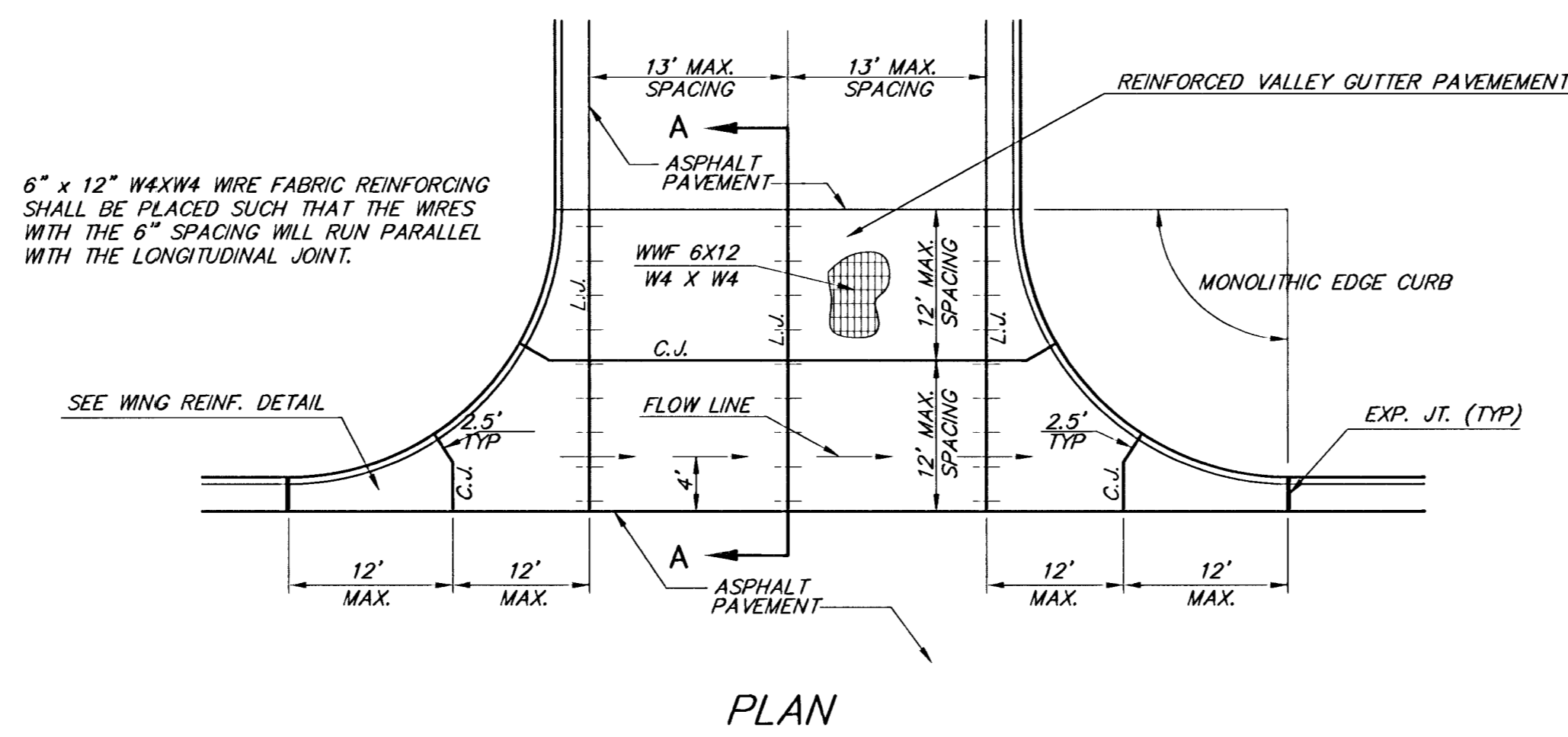
OPTIONAL CONTRACTION JOINT



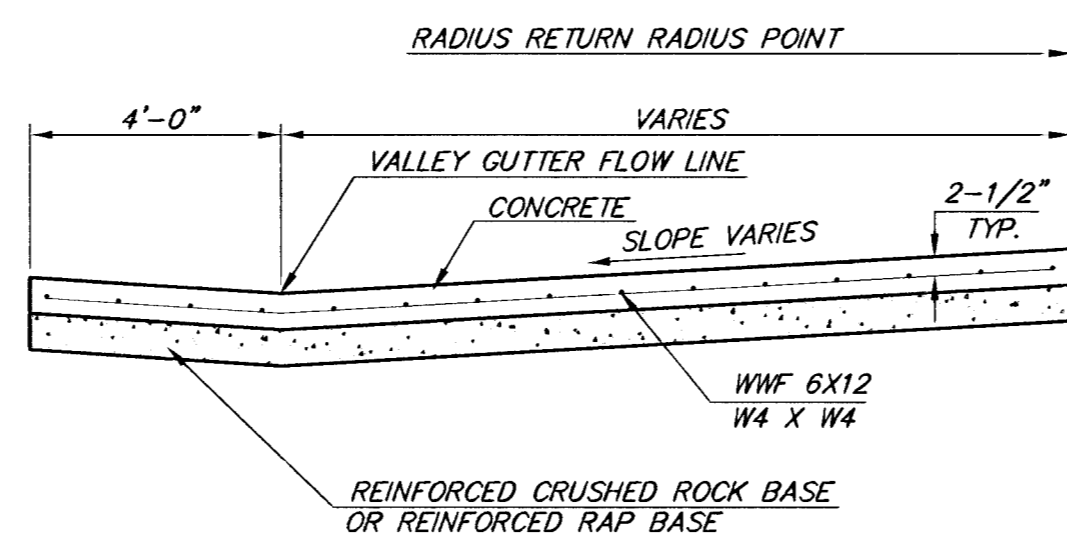
WING REINFORCING DETAIL



SAW JOINT DETAIL

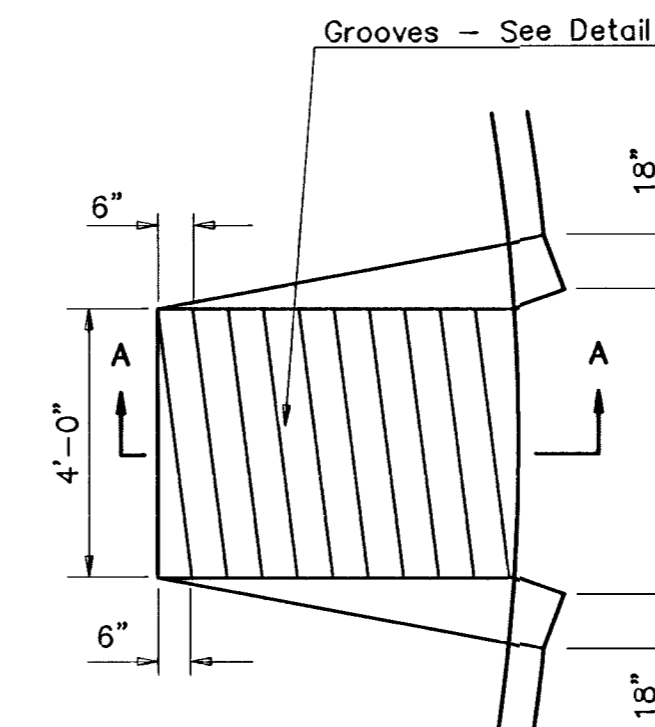


PLAN

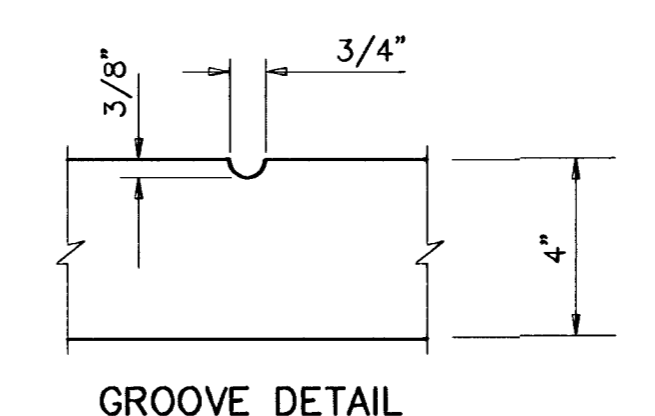


SECTION A-A

REINFORCED VALLEY GUTTER DETAIL

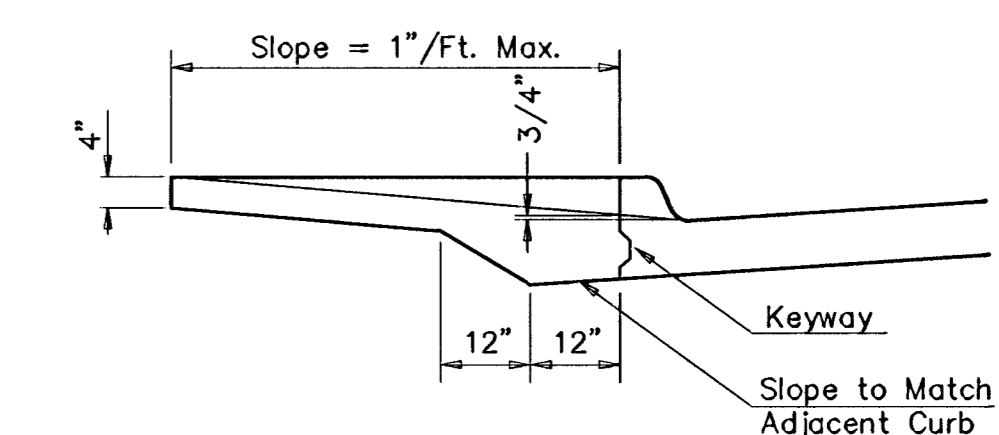


WHEELCHAIR RAMP PLAN VIEW

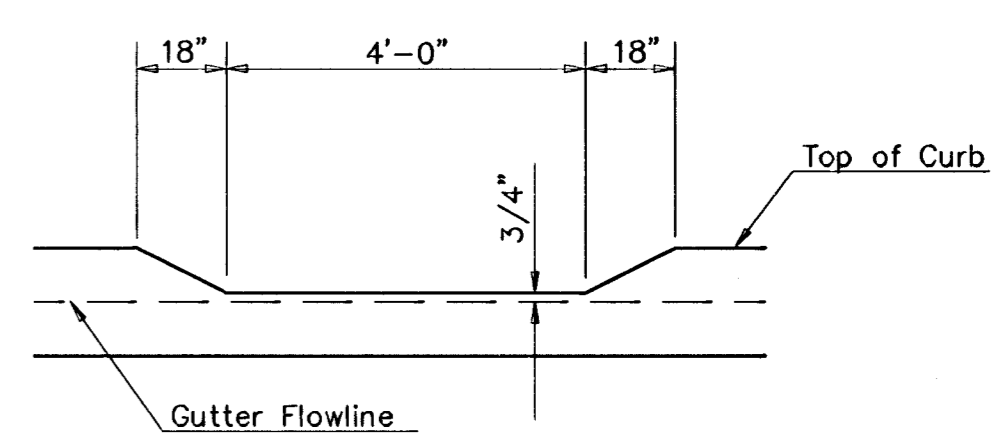


GROOVE DETAIL

WHEELCHAIR RAMP DETAIL



SECTION A-A



DEPRESSED CURB DETAIL

THE CITY OF WICHITA

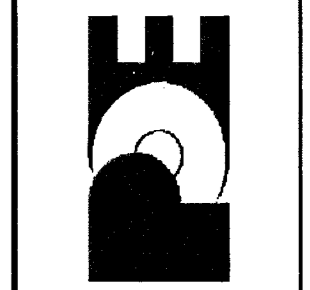
 CITY ENGINEER'S OFFICE
 455 NORTH MAIN STREET
 WICHITA, KANSAS 67202
 (316) 268-4501
 (316) 268-4114 FAX

VALLEY GUTTER DETAILS
WHEELCHAIR RAMP
DETAILS
 M. E. LINDEBAK P.E. - CITY ENGINEER
 PROJECT NUMBER _____ INDEX CODE _____
 DATE: MAR 96 SHEET 78 OF 88

FINAL
 Designed By: J. Ubert / B. Kulla
 Drawn By: B. Kulla
 City Engineer's Office
 455 NORTH MAIN STREET
 WICHITA, KANSAS 67202
 (316) 268-4501
 (316) 268-4114 FAX

FALCON FALLS - PHASE 1
 STREET IMPROVEMENTS
 VALLEY GUTTER / WHEELCHAIR RAMP DETAILS
 CITY OF WICHITA, KANSAS
 NEL D. CABLE, P.E. - CITY ENGINEER
 C.O.W. Project # 472-63667 O.C.A. # 765782

POE & ASSOCIATES OF KANSAS, INC.
 CONSULTING ENGINEERS
 6940 E. Central, Suite 200
 Wichita, KS 67220-4242
 Phone 316-686-4114 FAX 316-686-4444



Sheet 78 of 88
 Date: May 2003

6: \APPS\BCA\PI\7461616E.dwg Tue Jun 17 12:56:05 2003