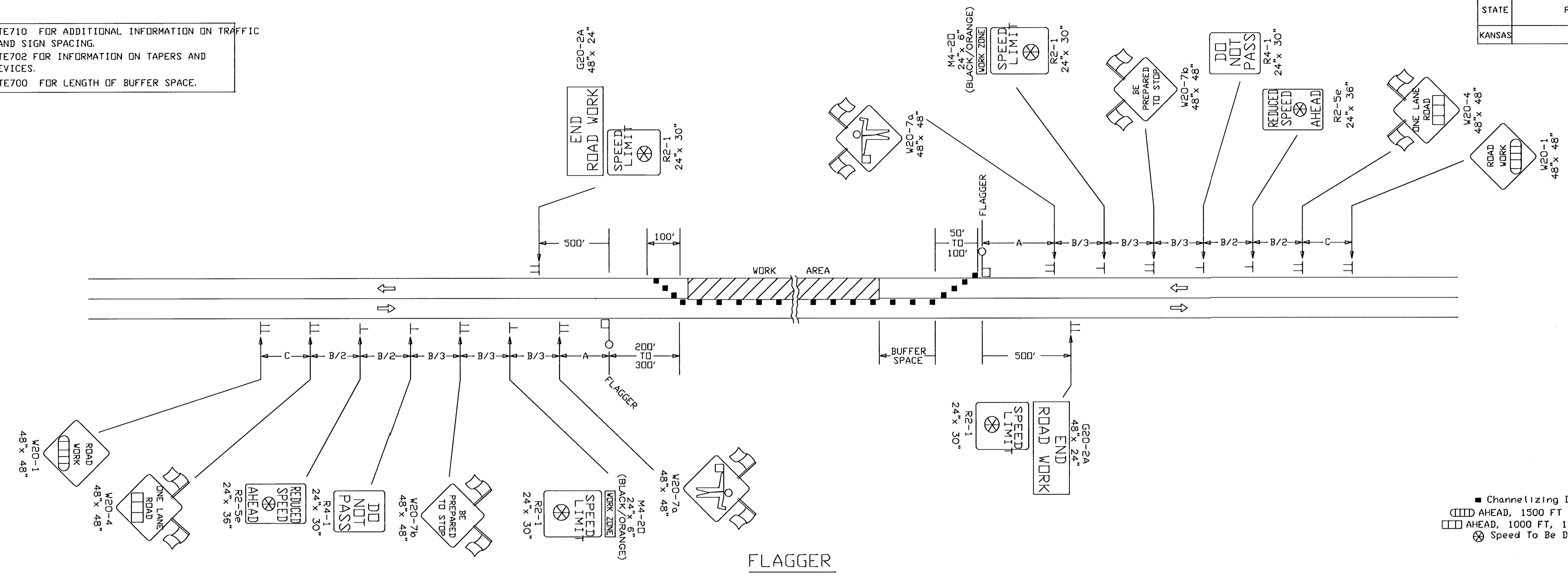


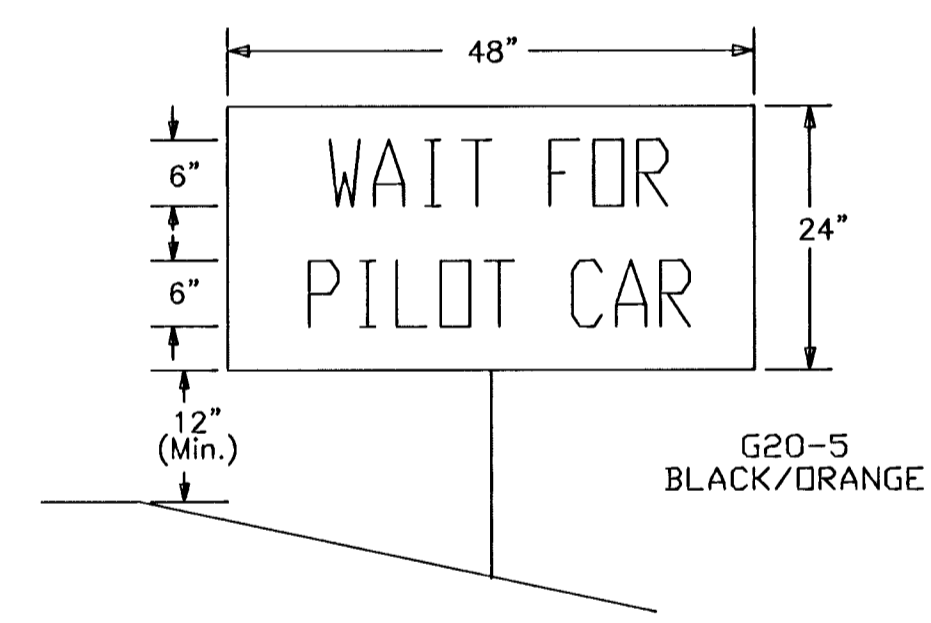
STATE	PROJECT NO.	YEAR	SHEET NO.	TOTAL SHEETS
KANSAS		2003	86	88

REFER TO STD. TE710 FOR ADDITIONAL INFORMATION ON TRAFFIC CONTROL SIGNS AND SIGN SPACING.
REFER TO STD. TE702 FOR INFORMATION ON TAPERS AND CHANNELIZING DEVICES.
REFER TO STD. TE700 FOR LENGTH OF BUFFER SPACE.

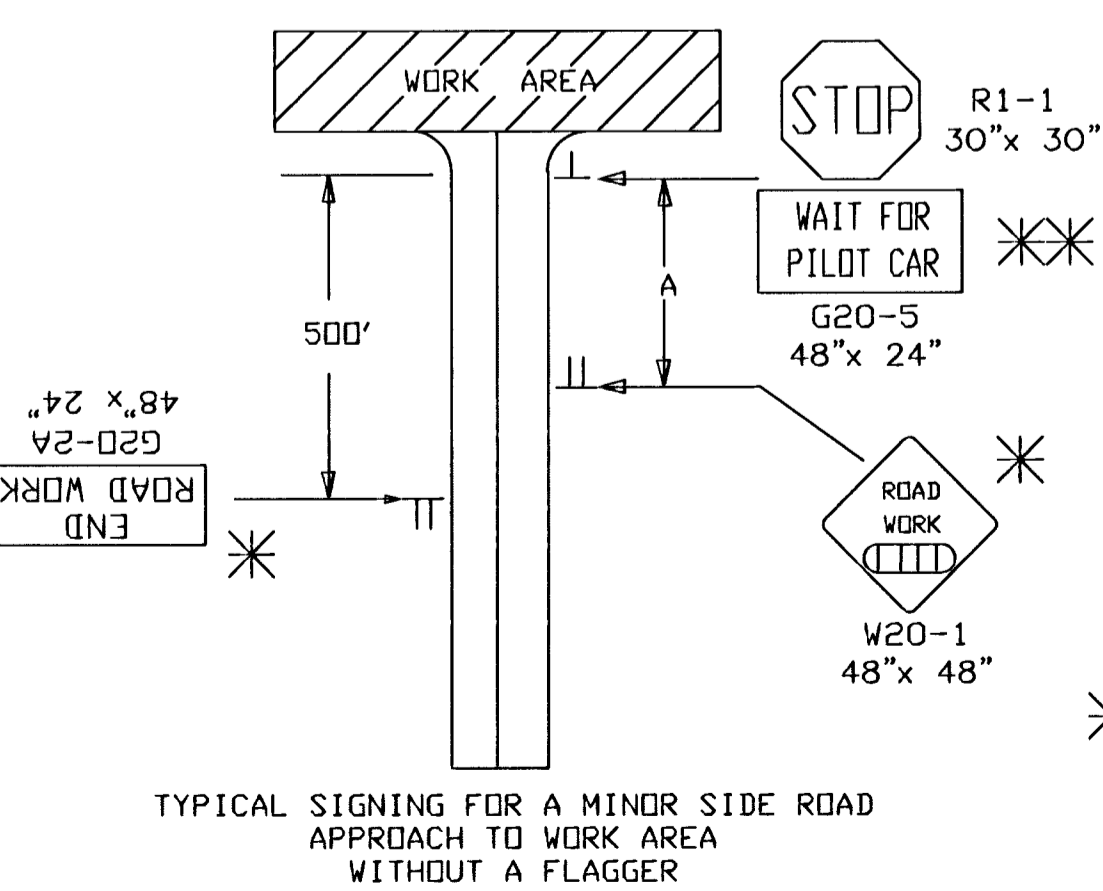


- Channelizing Device
- AHEAD, 1500 FT OR 1 MILE
- AHEAD, 1000 FT, 1500 FT, OR 1/2 MILE
- ⊗ Speed To Be Determined By The Engineer

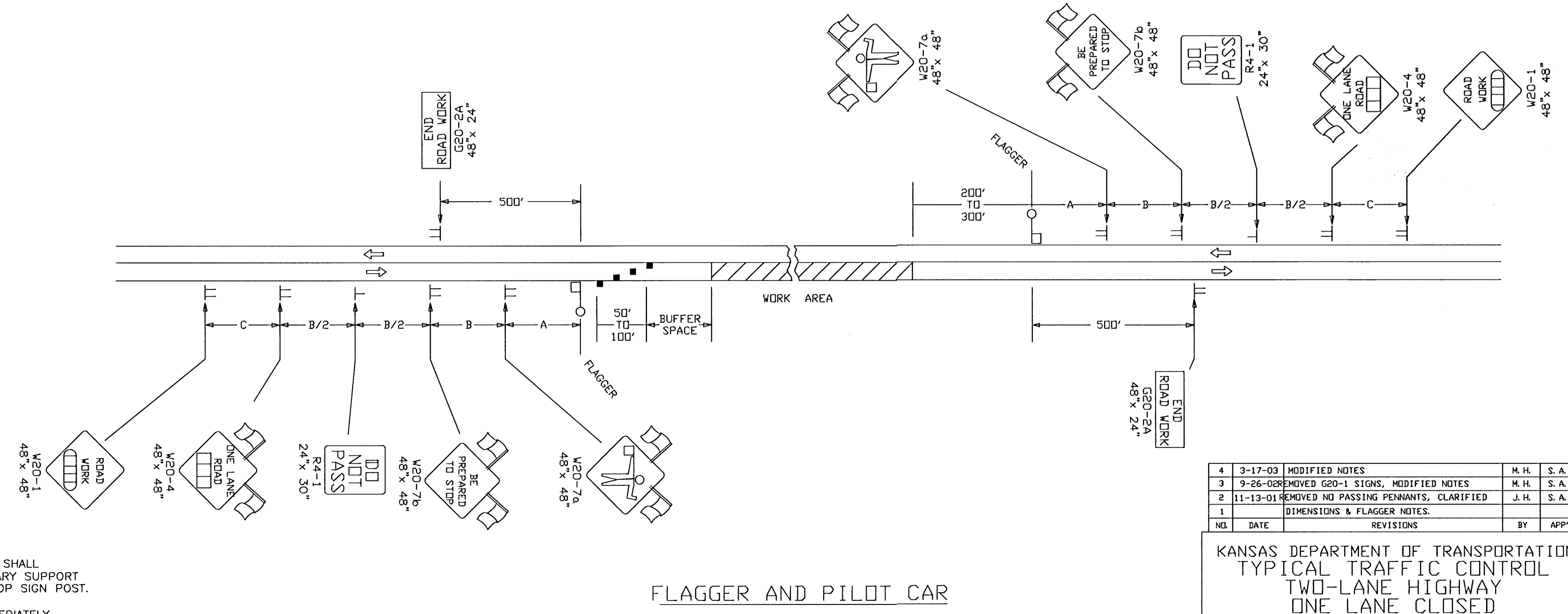
FLAGGER



NOTE:
PLACE A FLAGGER AT ALL HIGHWAY AND RS ROUTE INTERSECTIONS IN THE WORK AREA. A SINGLE FLAGGER AT EACH INTERSECTION IS SUBSIDIARY TO OTHER ITEMS. IF REQUESTED BY THE ENGINEER, EACH ADDITIONAL FLAGGER WILL BE MEASURED AND PAID FOR EACH HOUR THEY ARE REQUIRED. PLACE A W20-7a (FLAGGER SYMBOL) SIGN ON EACH SIDE ROAD APPROACH THAT IS CONTROLLED BY A FLAGGER.



* NOT REQUIRED ON "IR" PROJECTS.
* THE G20-5 (WAIT FOR PILOT CAR) SIGN SHALL BE MOUNTED ON AN APPROVED TEMPORARY SUPPORT AND NOT ATTACHED TO THE EXISTING STOP SIGN POST.
* THE G20-5 SIGN SHALL BE PLACED IMMEDIATELY IN FRONT OF THE EXISTING STOP SIGN, A MINIMUM OF 6" BELOW THE BOTTOM OF THE STOP SIGN. THE SIGN SHOULD BE REMOVED OR COVERED WHEN THERE IS NO PILOT CAR.



FLAGGER AND PILOT CAR

4	3-17-03	MODIFIED NOTES	M. H.	S. A. B.
3	9-26-02	REMOVED G20-1 SIGNS, MODIFIED NOTES	M. H.	S. A. B.
2	11-13-01	REMOVED NO PASSING PENNANTS, CLARIFIED	J. H.	S. A. B.
1		DIMENSIONS & FLAGGER NOTES.		
NO.	DATE	REVISIONS	BY	APP'D

KANSAS DEPARTMENT OF TRANSPORTATION
TYPICAL TRAFFIC CONTROL
TWO-LANE HIGHWAY
ONE LANE CLOSED
FLAGGER OR PILOT CAR
TE730 9/1/00

FIWA APPROVAL	4-23-03	APP'D Michael P. McKenna
DESIGNED	L. E. R.	DETAILED B. A. H.
DESIGN CK.	DETAIL CK.	QUAN. CK. TRACE CK.

Plotted By: @USERNAME@hacher, Bldg., 4th Floor
Plot File: @@@@@@DIGNSPC@@@@@
Plot Date: @@@@SYTIME@@@