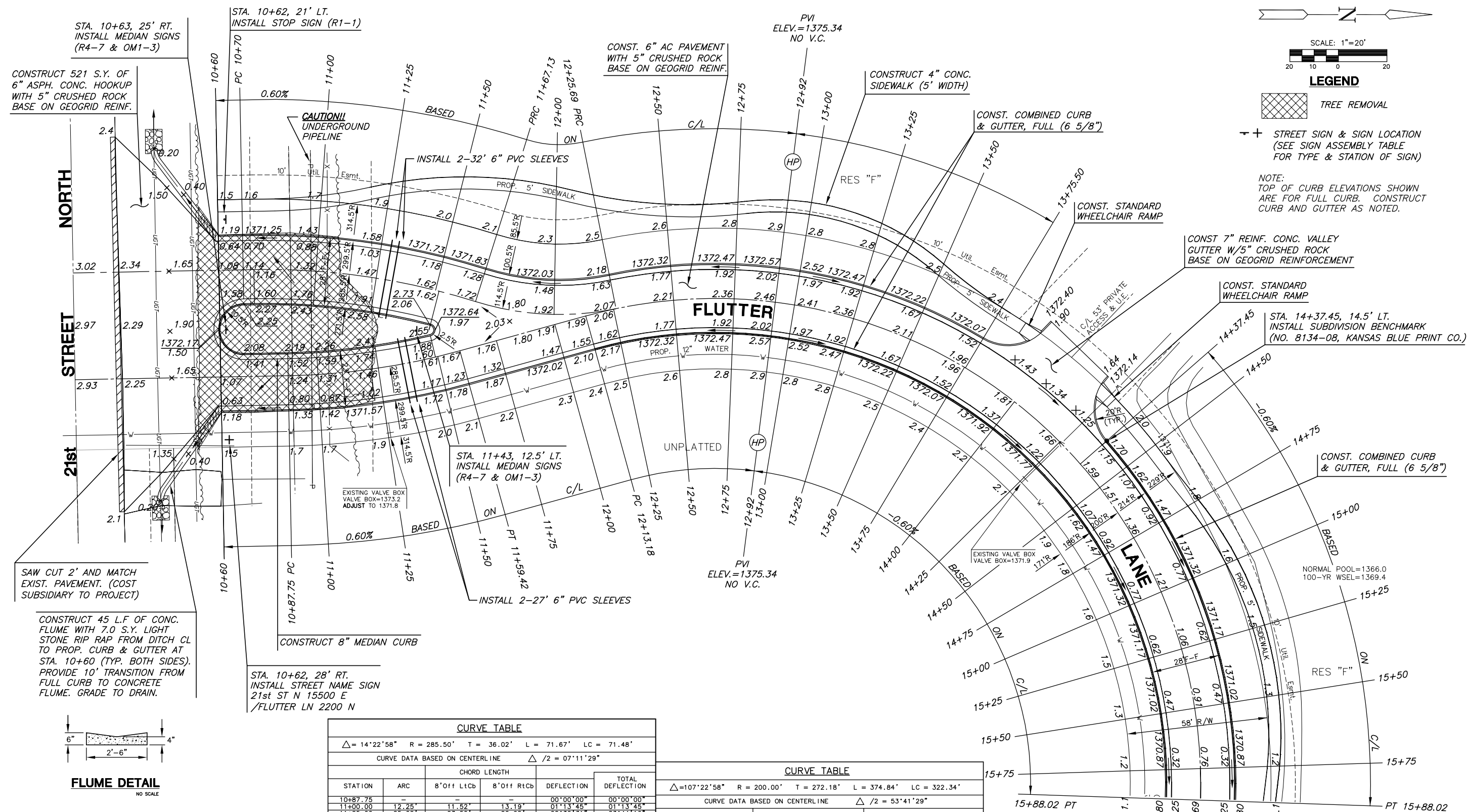


LEGEND
 TREE REMOVAL
 STREET SIGN & SIGN LOCATION
 (SEE SIGN ASSEMBLY TABLE FOR TYPE & STATION OF SIGN)

NOTE:
TOP OF CURB ELEVATIONS SHOWN ARE FOR FULL CURB. CONSTRUCT CURB AND GUTTER AS NOTED.

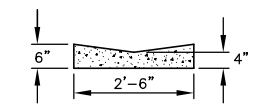


CONSTRUCT 521 S.Y. OF 6" ASPH. CONC. HOOKUP WITH 5" CRUSHED ROCK BASE ON GEOGRID REINF.

NORTH
STREET
21st

SAW CUT 2' AND MATCH EXIST. PAVEMENT. (COST SUBSIDIARY TO PROJECT)

CONSTRUCT 45 L.F OF CONC. FLUME WITH 7.0 S.Y. LIGHT STONE RIP RAP FROM DITCH CL TO PROP. CURB & GUTTER AT STA. 10+60 (TYP. BOTH SIDES). PROVIDE 10' TRANSITION FROM FULL CURB TO CONCRETE FLUME. GRADE TO DRAIN.



FLUME DETAIL
NO SCALE

CURVE TABLE					
$\Delta = 19^{\circ}29'34''$ R = 285.50' T = 49.04' L = 97.13' LC = 96.66'					
CURVE DATA BASED ON CENTERLINE $\Delta / 2 = 09^{\circ}44'47''$					
STATION	ARC	8' Off LtCb	8' Off RtCb	DEFLECTION	TOTAL DEFLECTION
10+70.00	-	-	-	00°00'00"	00°00'00"
10+75.00	5.00'	5.39'	4.61'	00°30'06"	00°30'06"
11+00.00	25.00'	26.92'	23.07'	02°30'31"	03°00'37"
11+25.00	25.00'	26.92'	23.07'	02°30'31"	05°31'08"
11+50.00	25.00'	26.92'	23.07'	02°30'31"	08°01'39"
11+59.42	9.42'	8.86'	10.14'	01°43'08"	09°44'47"
Def/Ft = 6.02057 Min.					

CURVE TABLE					
$\Delta = 14^{\circ}22'58''$ R = 285.50' T = 36.02' L = 71.67' LC = 71.48'					
CURVE DATA BASED ON CENTERLINE $\Delta / 2 = 07^{\circ}11'29''$					
STATION	ARC	8' Off LtCb	8' Off RtCb	DEFLECTION	TOTAL DEFLECTION
10+87.75	-	-	-	00°00'00"	00°00'00"
11+00.00	12.25'	11.52'	13.19'	01°13'45"	01°13'45"
11+25.00	25.00'	23.50'	26.92'	02°30'31"	03°44'16"
11+50.00	25.00'	23.50'	26.92'	02°30'31"	06°14'47"
11+59.42	9.42'	8.86'	10.14'	00°56'42"	07°11'29"
Def/Ft = 6.02057 Min.					

CURVE TABLE					
$\Delta = 29^{\circ}18'06''$ R = 114.50' T = 29.93' L = 58.56' LC = 57.92'					
CURVE DATA BASED ON CENTERLINE $\Delta / 2 = 14^{\circ}39'03''$					
STATION	ARC	8' Off LtCb	8' Off RtCb	DEFLECTION	TOTAL DEFLECTION
11+67.13	-	-	-	00°00'00"	00°00'00"
11+75.00	7.87'	8.36'	9.38'	01°58'09"	01°58'09"
12+00.00	25.00'	20.16'	29.74'	06°15'18"	08°13'27"
12+25.00	25.00'	20.16'	29.74'	06°15'18"	14°28'45"
12+25.69	.69'	.55'	.82'	00°10'18"	14°39'03"
Def/Ft = 15.01199 Min.					

CURVE TABLE					
$\Delta = 107^{\circ}22'58''$ R = 200.00' T = 272.18' L = 374.84' LC = 322.34'					
CURVE DATA BASED ON CENTERLINE $\Delta / 2 = 53^{\circ}41'29''$					
STATION	ARC	8' Off LtCb	8' Off RtCb	DEFLECTION	TOTAL DEFLECTION
12+13.18	-	-	-	00°00'00"	00°00'00"
12+25.00	11.82'	13.12'	10.52'	01°41'35"	01°41'35"
12+50.00	25.00'	27.73'	22.24'	03°34'52"	05°16'27"
12+75.00	25.00'	27.73'	22.24'	03°34'52"	08°51'18"
13+00.00	25.00'	27.73'	22.24'	03°34'52"	12°26'10"
13+25.00	25.00'	27.73'	22.24'	03°34'52"	16°01'01"
13+50.00	25.00'	27.73'	22.24'	03°34'52"	19°35'53"
13+75.00	25.00'	27.73'	22.24'	03°34'52"	23°10'44"
14+00.00	25.00'	27.73'	22.24'	03°34'52"	26°45'36"
14+25.00	25.00'	27.73'	22.24'	03°34'52"	30°20'28"
14+50.00	25.00'	27.73'	22.24'	03°34'52"	33°55'19"
14+75.00	25.00'	27.73'	22.24'	03°34'52"	37°30'11"
15+00.00	25.00'	27.73'	22.24'	03°34'52"	41°05'02"
15+25.00	25.00'	27.73'	22.24'	03°34'52"	44°39'54"
15+50.00	25.00'	27.73'	22.24'	03°34'52"	48°14'45"
15+75.00	25.00'	27.73'	22.24'	03°34'52"	51°49'37"
15+88.02	13.02'	14.45'	11.58'	01°51'52"	53°41'29"
Def/Ft = 8.59437 Min.					

PAVING PLANS
MONARCH LANDING
1st ADDITION

FLUTTER LANE
SHEET TITLE
472-84505
PROJECT NUMBER

DFL
DESIGN BY
KKL
DRAWN BY
GJA
CHECKED BY

ISSUED
April 2007
REVISED

SHEET NO.
10 of 55

FLUTTER: Tuesday, April 10, 2007 8:08:09AM

J:\CIVIL\06201\DWG\PAV\1ST\06201_E1.DWG