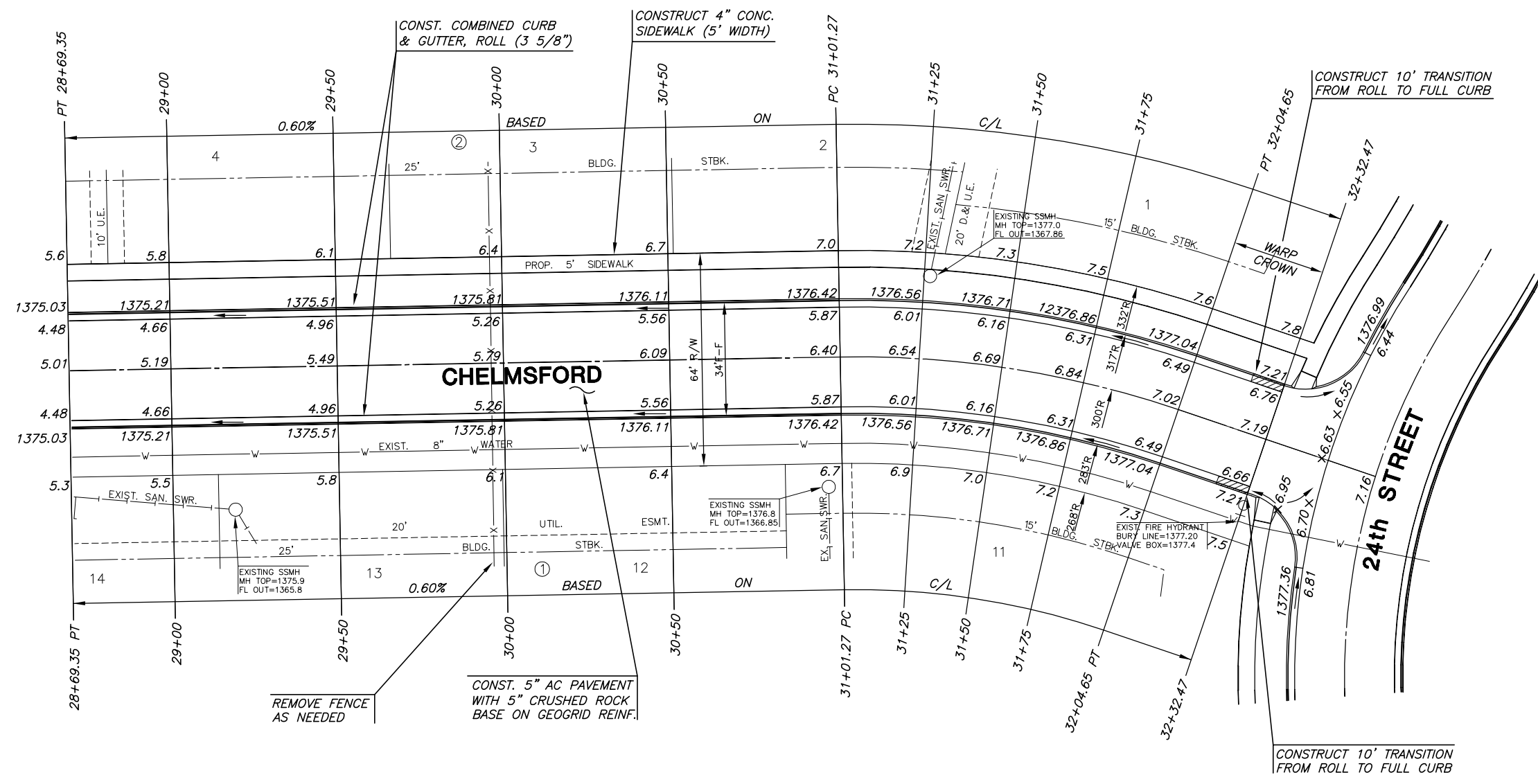
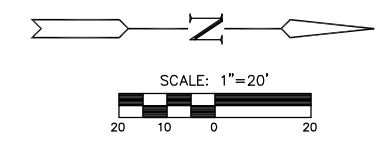


PAVING PLANS
MONARCH LANDING
1st ADDITION



CURVE TABLE					
$\Delta = 19^{\circ}44'36''$ R = 300.00' T = 52.21' L = 103.38' LC = 102.87'					
CURVE DATA BASED ON CENTERLINE $\Delta / 2 = 09^{\circ}52'18''$					
STATION	ARC	CHORD LENGTH		DEFLECTION	TOTAL DEFLECTION
		8' Off LtCb	8' Off RtCb		
31+01.27	-	-	-	00°00'00"	00°00'00"
31+25.00	23.73'	25.70'	21.75'	02°15'58"	02°15'58"
31+50.00	25.00'	27.08'	22.91'	02°23'14"	04°39'12"
31+75.00	25.00'	27.08'	22.91'	02°23'14"	07°02'27"
32+00.00	25.00'	27.08'	22.91'	02°23'14"	09°25'41"
32+04.65	4.65'	5.03'	4.26'	00°26'37"	09°52'18"

Def/Ft = 5.72958 Min.



LEGEND
 + + STREET SIGN & SIGN LOCATION
 (SEE SIGN ASSEMBLY TABLE
 FOR TYPE & STATION OF SIGN)

NOTE:
 TOP OF CURB ELEVATIONS SHOWN
 ARE FOR FULL CURB. CONSTRUCT
 CURB AND GUTTER AS NOTED.

CHELMSFORD
 SHEET TITLE
 472-84505
 PROJECT NUMBER

DFL
 DESIGN BY
 KKL
 DRAWN BY
 GJA
 CHECKED BY

ISSUED
 April 2007
 REVISED

SHEET NO.
 18 of 55