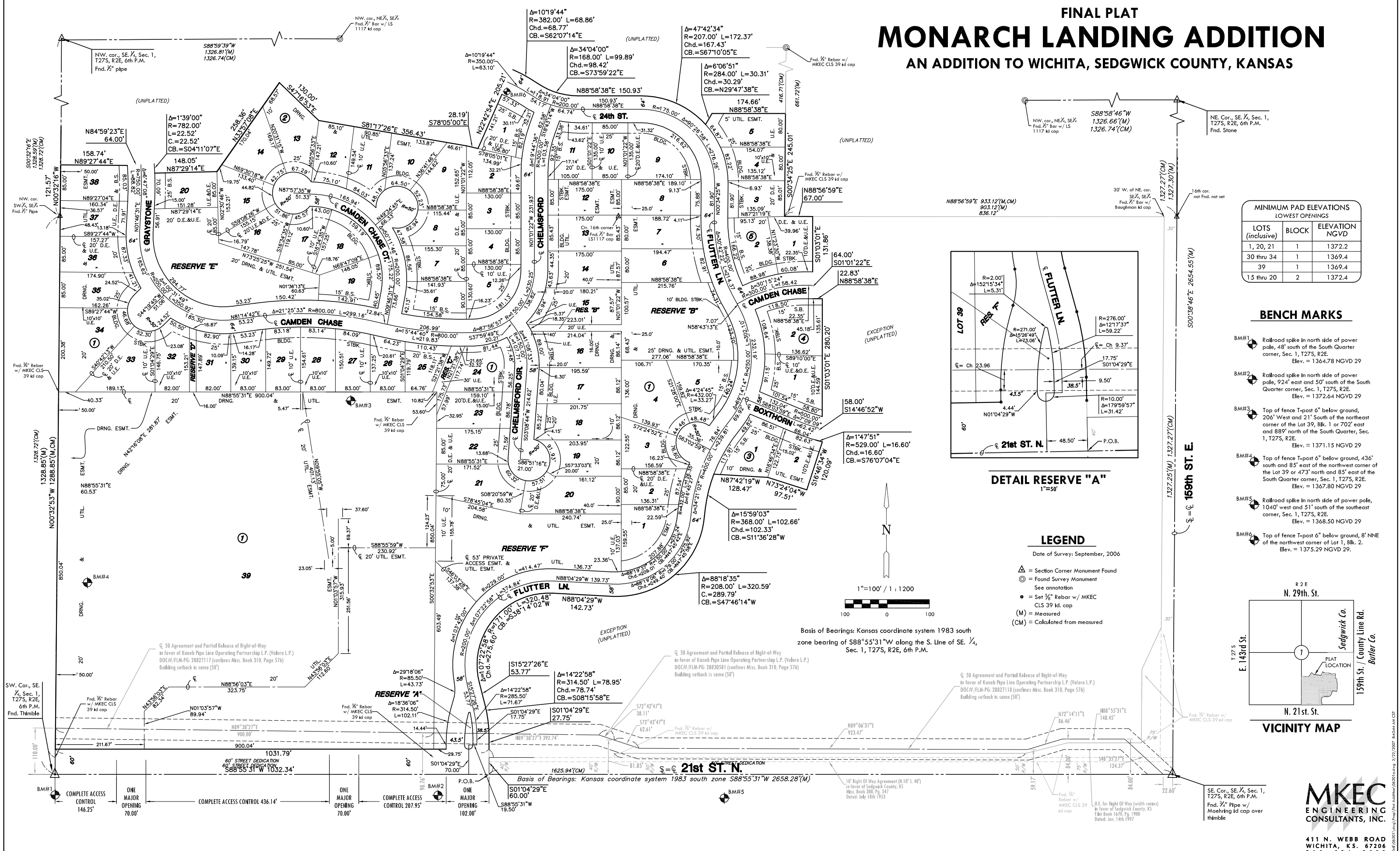


# FINAL PLAT MONARCH LANDING ADDITION

## AN ADDITION TO WICHITA, SEDGWICK COUNTY, KANSAS

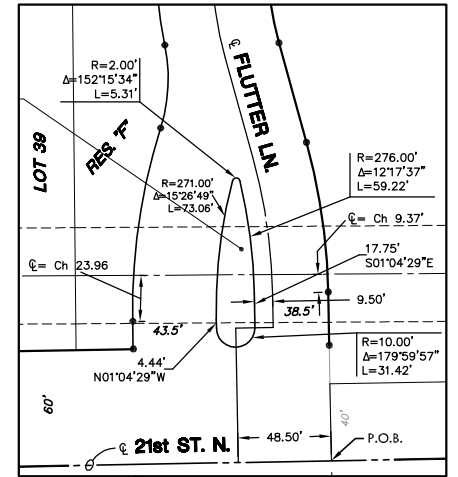


**MINIMUM PAD ELEVATIONS  
LOWEST OPENINGS**

LOTS (inclusive)	BLOCK	ELEVATION NGVD
1, 20, 21	1	1372.2
30 thru 34	1	1369.4
39	1	1369.4
15 thru 20	2	1372.4

### BENCH MARKS

- BM#1 Railroad spike in north side of power pole, 48' south of the South Quarter corner, Sec. 1, T27S, R2E. Elev. = 1364.78 NGVD 29
- BM#2 Railroad spike in north side of power pole, 924' east and 50' south of the South Quarter corner, Sec. 1, T27S, R2E. Elev. = 1372.64 NGVD 29
- BM#3 Top of fence T-post 6' below ground, 206' West and 21' South of the northeast corner of the 39, 1k. 1 or 702' east and 889' north of the South Quarter, Sec. 1, T27S, R2E. Elev. = 1371.15 NGVD 29
- BM#4 Top of fence T-post 6' below ground, 436' south and 85' east of the northwest corner of the lot 39 or 473' north and 85' east of the South Quarter corner, Sec. 1, T27S, R2E. Elev. = 1367.80 NGVD 29
- BM#5 Railroad spike in north side of power pole, 1040' west and 51' south of the southeast corner, Sec. 1, T27S, R2E. Elev. = 1368.50 NGVD 29
- BM#6 Top of fence T-post 6' below ground, 8' NNE of the northwest corner of Lot 1, Blk. 2. Elev. = 1375.29 NGVD 29.

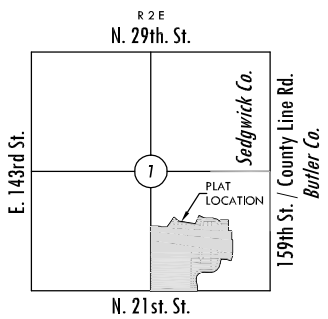
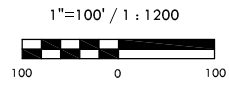


**DETAIL RESERVE "A"**  
1"=50'

### LEGEND

- Date of Survey: September, 2006
- △ Section Corner Monument Found
  - ⊙ Found Survey Monument
  - See annotation
  - Set 3/8" Rebar w/ MKEC CLS 39 id. cap
  - (M) = Measured
  - (CM) = Calculated from measured

Basis of Bearings: Kansas coordinate system 1983 south zone bearing of S88°55'31"W along the S. Line of SE 1/4, Sec. 1, T27S, R2E, 6th P.M.



**VICINITY MAP**

**MKEC**  
ENGINEERING  
CONSULTANTS, INC.

411 N. WEBB ROAD  
WICHITA, K.S. 67206  
316-684-9600