

GENERAL NOTES

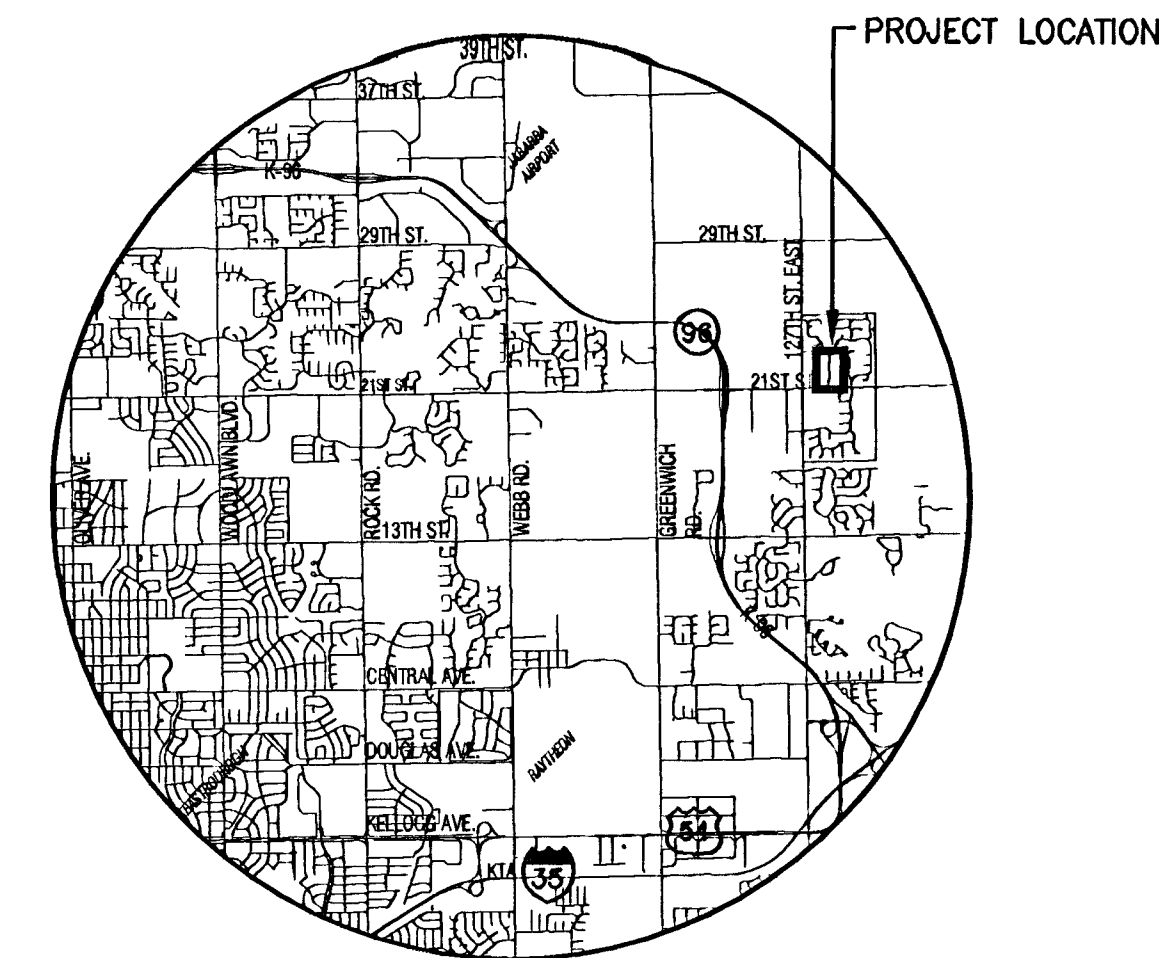
- UNLESS SHOWN OR STATED OTHERWISE ON THESE DRAWINGS, MATERIALS AND CONSTRUCTION SHALL BE IN ACCORDANCE WITH CITY OF WICHITA STANDARD SPECIFICATIONS.
- CONTRACTOR WILL BE REQUIRED TO PROVIDE A MINIMUM ADVANCE NOTICE OF SEVENTY-TWO (72) HOURS TO UTILITY COMPANIES PRIOR TO STARTING ANY EXCAVATION AS FOLLOWS:
KANSAS ONE-CALL 1-800-344-7233
OR 687-2470 (LOCAL WICHITA)
- THE CONTRACTOR MUST NOTIFY THE FOLLOWING IN CASE OF AN EMERGENCY:
SBC (TELEPHONE) 800-870-8390
COX COMMUNICATIONS (CABLE) 262-0661
WESTAR (ELECTRIC) 383-8600
KANSAS GAS SERVICE (GAS) 832-3101
CITY OF WICHITA WATER & SEWER MAINT. 262-6000
AQUILA (GAS) 946-0096
- THE CONTRACTOR SHALL BE RESPONSIBLE FOR PRESERVING PROPERTY IRONS. THE CONTRACTOR WILL BE REQUIRED TO RE-ESTABLISH ANY PROPERTY IRONS WHICH ARE DAMAGED OR DESTROYED BY HIS CONSTRUCTION OPERATIONS. SUCH IRONS SHALL BE RE-ESTABLISHED BY A LICENSED LAND SURVEYOR IN ACCORDANCE WITH STATE LAWS.
- EXISTING UTILITIES AND THEIR LOCATIONS, AS SHOWN ON THE PLANS REPRESENT THE BEST INFORMATION OBTAINABLE FOR DESIGN. LOCATION INFORMATION HAS BEEN OBTAINED FROM THE VARIOUS UTILITY COMPANIES AND IS EITHER FROM COMPANY RECORD DRAWINGS OR COMPANY PROVIDED FIELD LOCATIONS. THE PLAN LOCATIONS SHOWN ARE NOT GUARANTEED. ADDITIONAL EXISTING UTILITIES MAY ALSO BE ENCOUNTERED.
- RUBBLE FROM THE REMOVAL OF MISCELLANEOUS STRUCTURES AND EXCESS EXCAVATION WHICH IS TO BE WASTED SHALL BE DISPOSED OF ON SITES TO BE PROVIDED BY THE CONTRACTOR. THESE SITES SHALL BE APPROVED BY THE ENGINEER AS TO SUITABILITY, APPEARANCE AND SITE LOCATION. LOCATIONS THAT, IN THE OPINION OF THE ENGINEER, WILL LEAVE AN UNSIGHTLY APPEARANCE WILL NOT BE APPROVED. ALL DISPOSAL SITES MUST BE APPROVED BY THE KANSAS DEPARTMENT OF HEALTH AND ENVIRONMENT, MATERIAL EITHER STOCKPILED OR DISPOSED OF IN A FLOOD PLAIN WOULD REQUIRE A KANSAS STATE BOARD OF AGRICULTURE PERMIT. ANY MATERIAL DUMPED IN WATERS OF THE UNITED STATES OR WETLANDS IS SUBJECT TO U.S. CORPS OF ENGINEERS PERMITTING REGULATIONS. ANY MATERIAL BURIED OR STOCKPILED BEYOND APPROVED CONSTRUCTION LIMITS WOULD REQUIRE ADDITIONAL ARCHAEOLOGICAL INVESTIGATIONS UNLESS BURIED IN A PREVIOUSLY APPROVED BORROW LOCATION.
- TRANSITION CURB FROM FULL HEIGHT COMBINATION CURB AND GUTTER TO ROLL TYPE COMBINATION CURB AND GUTTER IS TO BE PAID AS BID FOR LINEAL FEET COMBINED CURB AND GUTTER (3 5/8" ROLL).
- A SAW CUT OF AT LEAST ONE-HALF THE DEPTH OF THE EXISTING SURFACE COURSES OR ONE-FOURTH THE DEPTH OF THE EXISTING TOTAL PAVEMENT THICKNESS SHALL BE PROVIDED AT LOCATIONS WHERE PROPOSED CONSTRUCTION ABUTS AN EXISTING SURFACE OR PAVEMENT FOR WHICH PARTIAL REMOVAL OF THAT SURFACE OR PAVEMENT IS REQUIRED. SAW JOINT TO FACILITATE REMOVAL WITHIN THREE (3) FEET OF EXISTING JOINTS WILL NOT BE PERMITTED AND FOR SUCH INSTANCES THE LIMITS OF REMOVAL SHALL EXTEND TO THE EXISTING JOINT. SUCH SAW CUTS WILL NOT BE PAID FOR DIRECTLY AND THIS COST SHALL BE CONSIDERED AS SUBSIDIARY TO THE REMOVAL OF SURFACE OR PAVEMENT.
- ALL EXISTING TREES ARE AN IMPORTANT ASSET TO THE DEVELOPER. NO TREE OF ANY SIZE SHALL BE REMOVED UNLESS NOTED OTHERWISE. THE CONTRACTOR SHALL COORDINATE TREE REMOVAL WITH MKEC.
- EQUIPMENT AND CONSTRUCTION MATERIALS (INCLUDING VEHICLES) SHALL REMAIN OUT OF AND AWAY FROM TREE DRIPLINES (INCLUDING TREES WITHOUT PROTECTIVE FENCING) SO AS NOT TO COMPACT THE ROOT ZONE OR DAMAGE THE TREE. IF GRADING OCCURS OR CONFLICTS WITHIN THE PROTECTED FENCE AREA UNDER TREE DRIPLINE, REMOVE AS SMALL OF A PORTION OF FENCE AREA AS NECESSARY IN ORDER TO ACCOMPLISH THE WORK. CONSULT WITH ENGINEER BEFORE INITIATING GRADING WORK IN THESE AREAS.
- ANY TREE THAT MUST HAVE BRANCHES REMOVED SHALL BE TRIMMED WITH A SHARP INSTRUMENT/TOOL THAT IS INTENDED FOR SUCH OPERATIONS. GAIN APPROVAL FROM MKEC BEFORE REMOVING BRANCHES FROM ANY TREE. KNOCKING BRANCHES OFF WITH A BACKHOE OR OTHER SIMILAR MACHINES IS NOT ACCEPTABLE! SEE DETAIL ON SHEET 15.

PRIVATE PAVING & STORM WATER SEWER PLANS FOR HAWTHORNE 4TH ADDITION

AN ADDITION TO THE CITY OF WICHITA
SEDGWICK COUNTY, KANSAS

LINDSAY CIRCLE PRIVATE PROJECT NO. 158PPP (607879)

JIM ARMOUR, ACTING CITY ENGINEER



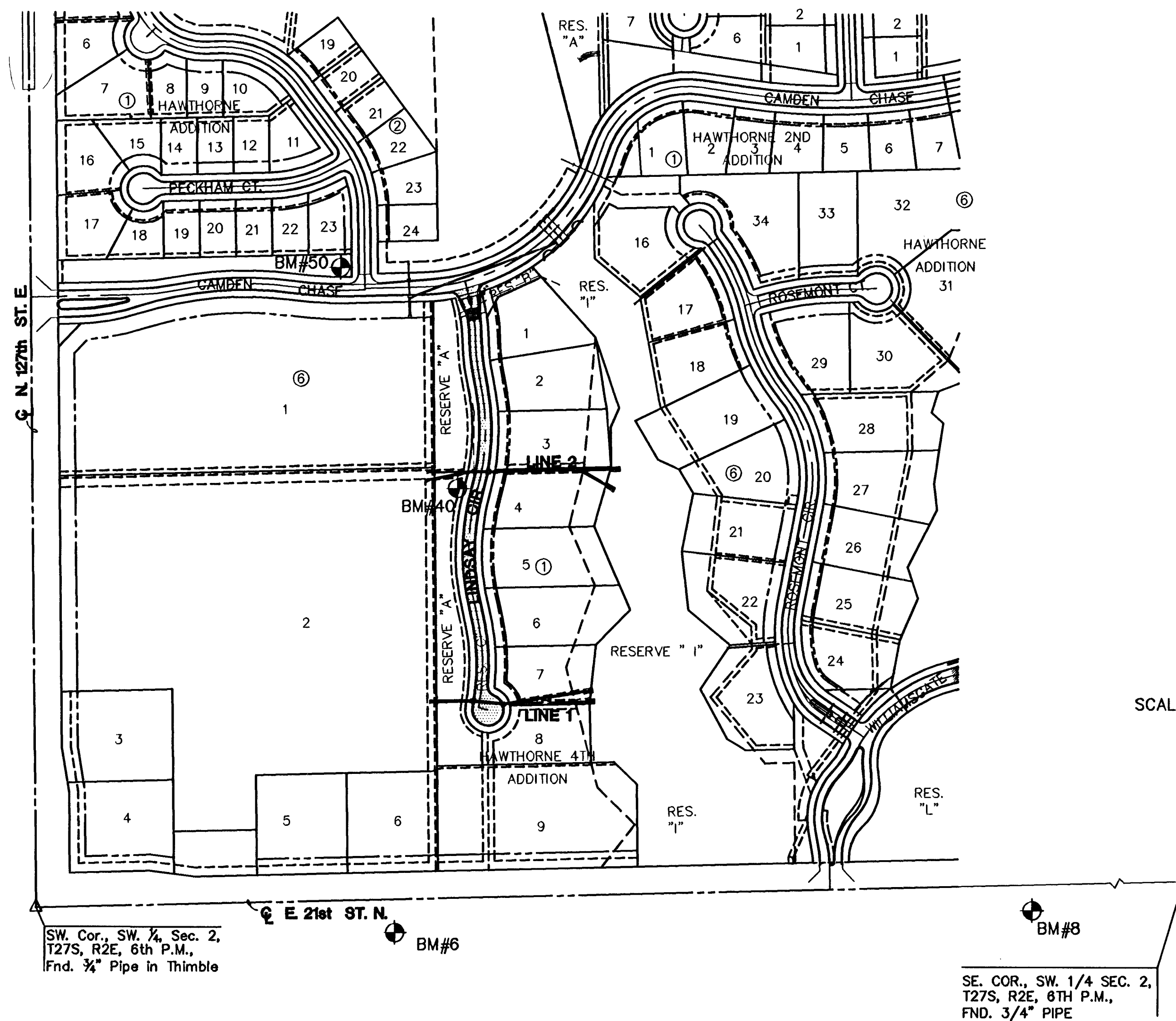
LOCATION MAP

INDEX TO DRAWINGS

SHEET NO.	DESCRIPTION
1	TITLE SHEET
2-5	TYP. PAVING DETAILS
6	SIGNING DETAILS
7-8	PAVEMENT PLANS
9-11	STORM WATER SEWER DETAILS
12-13	STORM WATER SEWER LINES 1 & 2
14-15	GRADING & INCIDENTAL DRAINAGE
16-19	BMP DETAILS
20-27	CROSS SECTIONS
28	FINAL PLAT

BENCHMARKS

BM #6	RR SPIKE IN NORTH FACE 4TH PP EAST OF 127TH ST. E. ON S. SIDE 21ST ST. N., 770'+/- E., & 48'+/- S. OF NW COR SEC 11, T 27 S, R 2 E. ELEV. = 1366.96' NGVD
BM #8	RR SPIKE N. FACE OF PP W. OF N. 1/4 COR ON S. SIDE 21ST ST. N., 218'+/- W. AND 48'+/- S. OF N. 1/4 COR SEC 11, T 27 S, R 2 E. ELEV. = 1357.15' NGVD
BM #40	"T" POST 5'+/W. OF PC IRON ON WEST SIDE OF LINDSAY CIRCLE IN RES. "A" & LYING SOUTH OF CHAMDEN CHASE 450± ELEV.=1361.51 NGVD
BM #50	BRASS DISC IN W. RETURN OF TOP OF CURB AT NW CORNER OF PECKHAM ST. & CAMDEN CHASE ELEV.=1361.32' NGVD



SCALE: 1" = 200'

LEGEND

• IRON

NOTE TO CONTRACTOR

INSPECTION AND TESTING FOR THIS PROJECT IS TO BE PROVIDED BY A LICENSED CONSULTING ENGINEERING FIRM UNDER CONTRACT WITH THE OWNER/DEVELOPER. SAID INSPECTION TO BE IN ACCORDANCE WITH THE CITY OF WICHITA STANDARD CONSTRUCTION ENGINEERING PRACTICES AND CERTIFIED BY A LICENSED PROFESSIONAL ENGINEER. NO WORK SHALL BE PERFORMED IN DEDICATED EASEMENTS OR THE PUBLIC RIGHT-OF-WAY BY THE CONTRACTOR WITHOUT SUCH INSPECTION NOR SHALL ANY WORK BE COMMENCED IN DEDICATED EASEMENTS OR PUBLIC RIGHT-OF-WAY WITHOUT WRITTEN AUTHORIZATION BY THE CITY ENGINEER.

APPROVED AS NOTED
BY CITY ENGINEER OF WICHITA

STORM SEWERS _____
PAVING _____

PROJECT LENGTH	
LINDSAY CIRCLE	970 L.F.
EARTHWORK SUMMARY	
EXCAVATION	1997.0 C.Y.
LOOSE FILL	7205.1 C.Y.
COMPACTED FILL	457.7 C.Y.

(WITHOUT FILL FACTOR)

AS-BUILT NOVEMBER 2006

H:\CIVIL\02167\DWG\SWS\AS-BUILTS\LINDSAY_CIR\2167_ET1.DWG



**HAWTHORNE 4TH ADDITION
LINDSAY CIRCLE (PRIVATE)**
PROJECT NAME

TITLE SHEET
SHEET TITLE

MKEC DESIGN BY:	MK/DAC DRAWN BY:	DRK CHECKED BY:
SEPT. 2004 DATE	2167_ET1 DRAWING NAME	1 / 28 SHEET / OF