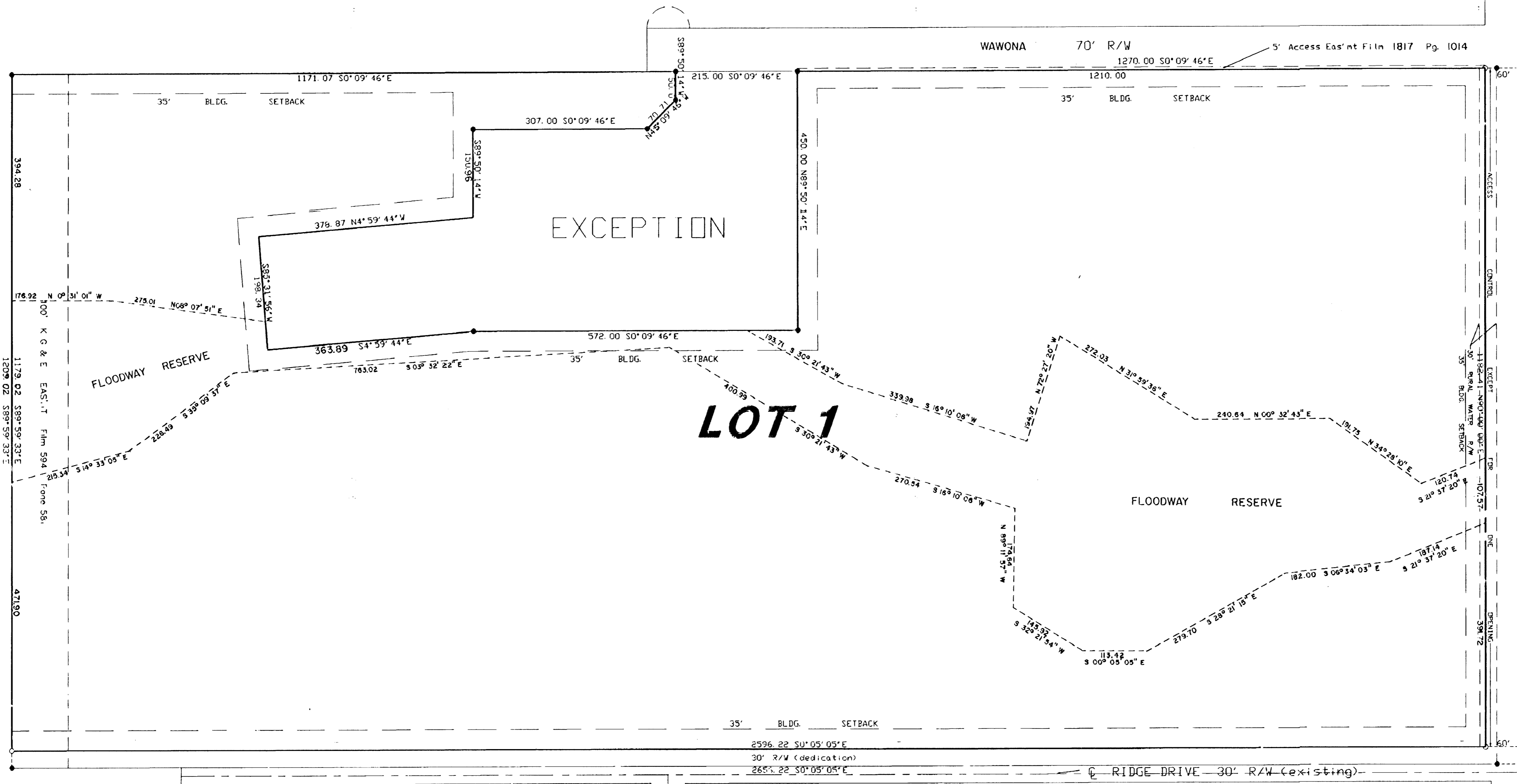
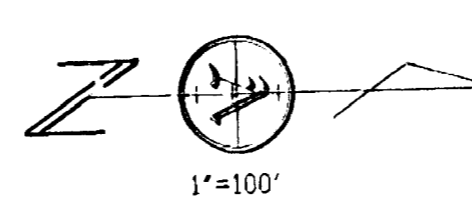


TRINITY ACADEMY an Addition to Sedgwick County, Kansas



LOT 1



- Iron found at "NREC" cap
- 5/8" rebar set w/ "ARMSTRONG" cap
- Iron in blumber

Minimum Pad elev. = 1365 M.S.I. for north 800 feet of lot 1.
 BM: R.R. spike in east side P.P. 1531' - south of 21st st. on west side Wawona Elev: 1368.65 m.s.l.

State of Kansas } ss
 County of Sedgwick }
 I, Donald C. Armstrong, Registered Land Surveyor in and of said County do hereby certify that on this 12th day of August, 1998, I have surveyed and plotted the "TRINITY ACADEMY" an Addition to Sedgwick County, Kansas, 1/2 x 1/4 and 5/8" on some being described as follows: THE NE (EAST) QUARTER OF SECTION 10, TOWNSHIP 27 SOUTH, RANGE 2 EAST, D. THE 51TH MUNICIPAL MERIDIAN, SEDGWICK COUNTY, KANSAS, EXCEPT QUARTER, THENCE SOUTH 2056 FEET TO THE SOUTHWEST CORNER OF SAID NORTHEAST QUARTER, THENCE EAST 800 FEET, THENCE NORTH 2852 FEET TO A POINT IN THE NORTH LINE OF SAID NORTH-EAST QUARTER, SUCH POINT BEING 8241 FEET EAST OF THE PLACE OF BEGINNING, THENCE WEST 8241 FEET TO THE PLACE OF BEGINNING, AND EXCEPT THE EAST 378 FEET OF SAID NORTHEAST QUARTER, AND EXCEPT CORNER IN AT THE NORTHWEST CORNER OF SAID NORTHEAST QUARTER, THENCE EAST 9310 FEET ON AN ASSUMED BEARING OF N 90°00'00\"/>

I know all men by these presents that I, the undersigned, have caused the land described in the surveyor's certificate to be plotted into a lot and block to be known as "TRINITY ACADEMY" an Addition to Sedgwick County, Kansas. The utility easements, as indicated, for construction and maintenance of public utilities are hereby granted. The streets are hereby dedicated to and for the use of the public. All others' rights of access to and from 21st Street and across the north line of this plot, as shown, are hereby granted to the appropriate governing body, provided however, that Lot 1 shall have access to 21st Street at one opening to be determined by the appropriate engineer. Minimum Pad elevation is as indicated.

DONORS:
 William R. Neth, Robert W. Smith, 9/12/98
 Peter L. Ochs, 9/12/98
 Date

State of Kansas } ss
 County of Sedgwick }
 Be it remembered that on this 12th day of August, 1998, before me, a Notary Public in and for said state and county, came William R. Neth, Peter L. Ochs and Robert W. Smith to me personally known to be the same persons who executed the foregoing instrument of writing and duly acknowledged the execution of same. In testimony whereof I have hereunto set my hand and affixed my notarial seal the day and year above written.

Donna S. Newman, Notary Public
 My commission expires 2-23-1999

DONNA S. NEWMAN
 State of Kansas - Notary Public
 My Exp. Expires 2-23-1999

This plot has been submitted to and approved by the Wichita-Sedgwick County Metropolitan Area Planning Commission, Wichita, Kansas, on the 12th day of August, 1998.

Richard E. Jones, Chairman
 Nicholas R. Lewis, Secretary
 Marvin S. Kroat

SEAL OF THE METROPOLITAN AREA PLANNING COMMISSION

This plot has been submitted to and approved by the city council of the City of Wichita, Kansas, dated this 12th day of August, 1998.

Bob Knight, Mayor
 Pat Burnett, City Clerk
 Pat Burnett

SEAL OF THE CITY OF WICHITA, KANSAS

This plot approved and all dedications shown herein accepted by the Board of County Commissioners of Sedgwick County, Kansas, the 12th day of August, 1998.

Bill Hancock, Chairman
 Bill Hancock, Chairman Pro Tem
 Roger Smith, Chairman
 Thomas S. Willett, Commissioner
 Carl Mc Ginn, Commissioner
 James S. Williams, Commissioner
 Gene Ward, County Clerk

SEAL OF SEDGWICK COUNTY, KANSAS

Entered on transfer record the 12th day of August, 1998.

State of Kansas
 County of Sedgwick
 This is to certify that this plot has been filed for record in the office of the Register of Deeds on the 20th day of August, 1998, at 10:44 AM. and is duly recorded.

Register of Deeds
 # 1822379

SEAL OF THE REGISTER OF DEEDS

250 MATHEWSON
 WICHITA, KS 67214
 PH. (316) 263-0082
 FX. (316) 263-0092

ARMSTRONG LAND SURVEY, P.A.

2 Oct