

SCHAEFER JOHNSON COX FREY ARCHITECTURE
 1000 N. Broad Street
 Suite 200
 Philadelphia, PA 19102
 Tel: 215.561.1111
 Fax: 215.561.1112
 www.sjcfx.com

PROGRESS PRINT
 NOT FOR CONSTRUCTION

DUDLEY WILLIAMS & ASSOCIATES, P.A.
 STRUCTURAL ENGINEERS
 MECHANICAL SYSTEMS, INC.
 MECHANICAL ENGINEERS
 JOHNSON ENGINEERING
 ELECTRICAL ENGINEERS

TRINITY ACADEMY
 AUDITORIUM AND CLASSROOM ADDITION
 TRINITY ACADEMY
 1435 CHESTNUT NORTH
 WICHITA, KS 67208

© 2008
 Schaefer Johnson Cox Frey & Associates, P.A.
 All rights reserved.
 These drawings and their contents, including, but not limited to, all concepts, designs, & specifications are the exclusive property of Schaefer Johnson Cox Frey (SJCFF), and may not be used or reproduced in any way without the written consent of SJCFF.

Revisions
 Project Number
 SJCF 2918.00
 Date
 18 SEPTEMBER 2008
 SITE PLAN
 GRADING PLAN

1" = 20'-0"
G??1

GENERAL NOTES

- A. CONTRACTOR TO VERIFY EXISTING SITE AND BUILDING CONDITIONS
- B. MAINTAIN 2% GROSS SLOPE FOR ALL SIDEWALKS UNLESS OTHERWISE INDICATED
- C. ACCESSIBLE PARKING SPACES AND ACCESS AISLES SHALL BE 2% SLOPE MAX IN ALL DIRECTIONS.
- D. REFER TO TOPOGRAPHICAL SURVEY SHEET C12.1
- E. PROVIDE CONCRETE PAVING CONTROL JOINTS IN 100 S.F. PANELS MAX.
- F. PROVIDE EXPANSION JOINTS IN 100 S.F. CONCRETE PANELS MAX.
- G. PROVIDE EXPANSION JOINTS IN CONCRETE WALK AT 50' MAX O.C.
- H. VERIFY AND PROTECT ALL EXISTING UTILITIES

KEYED NOTES

1. ASPHALT PAVING - REFER TO PROJECT MANUAL, GEOTECHNICAL ENGINEERING REPORT (SOILS REPORT) FOR RECOMMENDED PAVEMENT THICKNESS AND SUB-GRADE PREP, REF. D2.04
2. CONCRETE CURB WITH WALK - REF. B/D2.04
3. ASPHALT DRIVE APPROACH
4. 4" STALL STRIPING PER PLAN - REF. B/D2.05
5. H.C. PARKING STALL - REF. A/D2.05
6. H.C. SIGN - IN STALLS LABELED "VAN", PROVIDE ONE "VAN ACCESSIBLE" SIGN BELOW THE HANDICAP SIGN - REF. A/D2.06
7. CONCRETE WHEEL CHAIR RAMP - REF. D2.03
8. CATCH BASIN - REF. D2.09
9. FLUSH NEW PAVEMENT WITH EXISTING
10. CONCRETE SPLASH BLOCK - REF. A/D2.07
11. CONCRETE WHEEL STOP - REF. B/D2.07
12. ROOF DRAIN LEADERS, TIE TO CATCH BASIN - REF. MECH.
13. CONCRETE HEADWALL - REF. D2.11
14. RELOCATED LIGHT POLE - REF. ELECT.
15. PAINT STRIPING - DIRECTIONAL ARROWS - REF. SPEC.
16. CONCRETE FLUME - FLUME TO PREVENT EROSION
17. NOT USED
18. EDGE CONDITION AT ASPHALT - REF. A/D2.04
19. PROVIDE EROSION CONTROL MAT AS NECESSARY
20. INSTALL 5" X 9" RIP-RAP

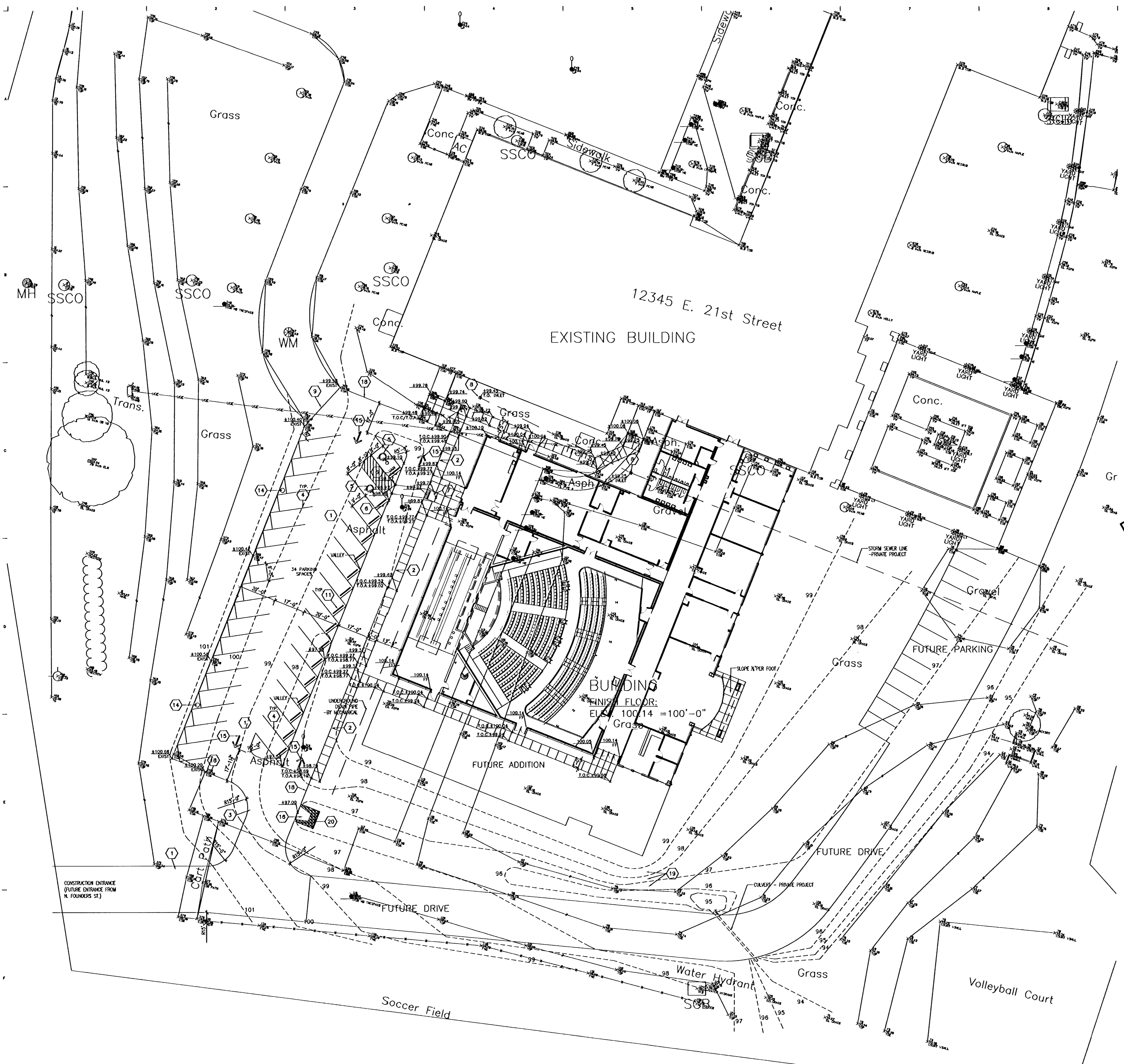
LEGEND

- XXX- NEW SPOT ELEVATION
- XXX- NEW SPOT ELEVATION TOP OF CURB
- XXX- NEW SPOT ELEVATION BOTTOM OF CURB
- 123- NEW CONTOUR

Not to Scale
Elev. conversion
100.00= 1372.56mal

LEGEND

- ⊙ Fire Hydrant
- GM Gas Meter
- ⊙ Light Pole
- MH Sanitary Sewer Manhole
- Sign
- SCB Sprinkler Control Box
- SSCO Sanitary Sewer Cleanout
- Tree
- WM Water Meter
- ⊕ Water Valve
- x- Fence
- ~ Treerow



CONSTRUCTION ENTRANCE
 (FUTURE ENTRANCE FROM
 N. FOUNDERS ST.)

Soccer Field

Volleyball Court

FINISH FLOOR:
 ELEV. 100.14 = 100'-0"