

"As-Built"
**SANITARY SEWER TO SERVE
 REFLECTION RIDGE WEST 2ND ADDITION**

**BLOCK 1, LOT 1
 CITY OF WICHITA, KANSAS
 1649 PPS (607861)
 JIM ARMOUS, P.E. CITY ENGINEER**

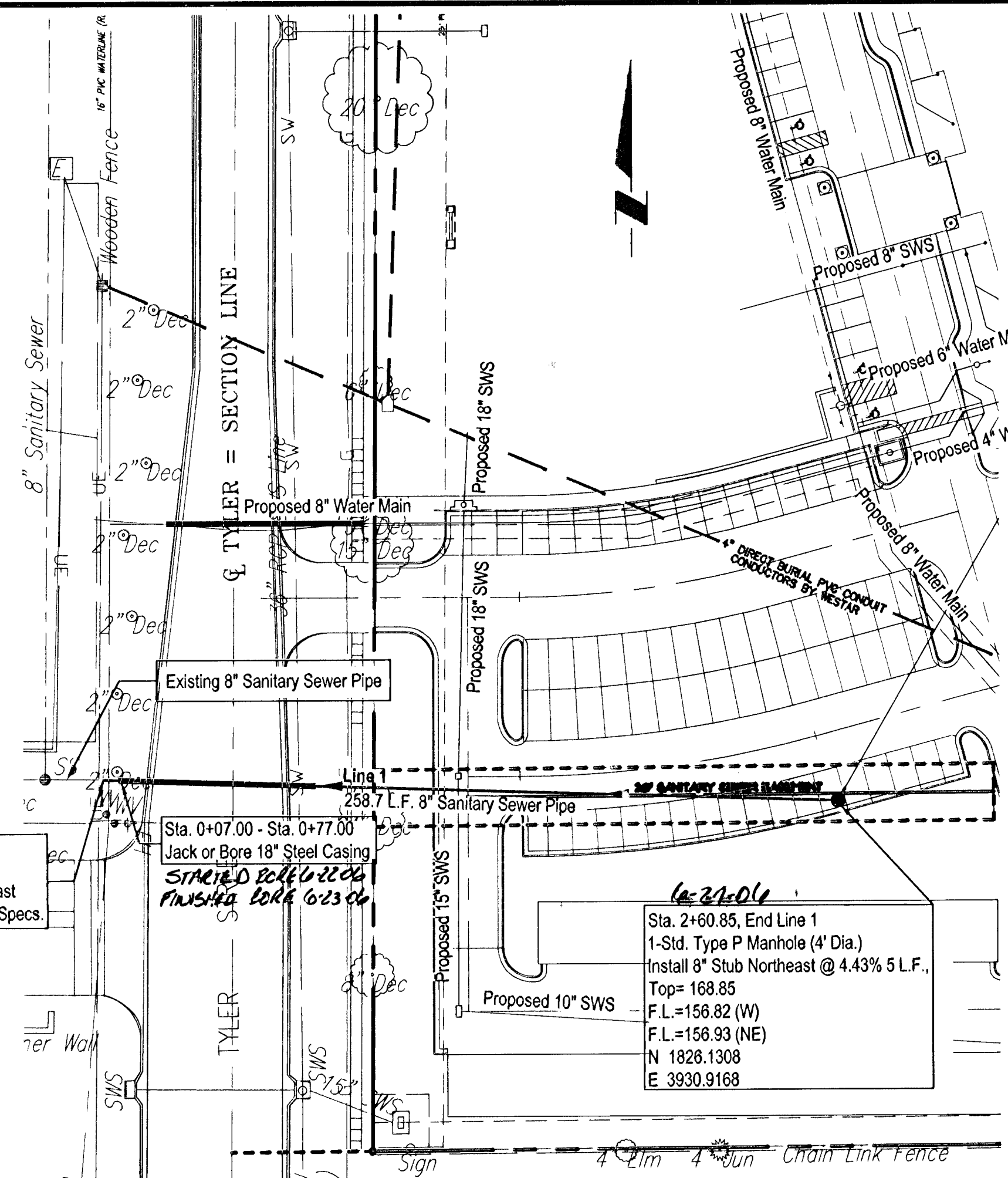
LEGAL DESCRIPTION

Lots 1, 2, 3 & 4, Block 1 & Reserves A, B, C, & D,
 All in Reflection Ridge West, an Addition to
 Wichita, Sedgewick County, Kansas

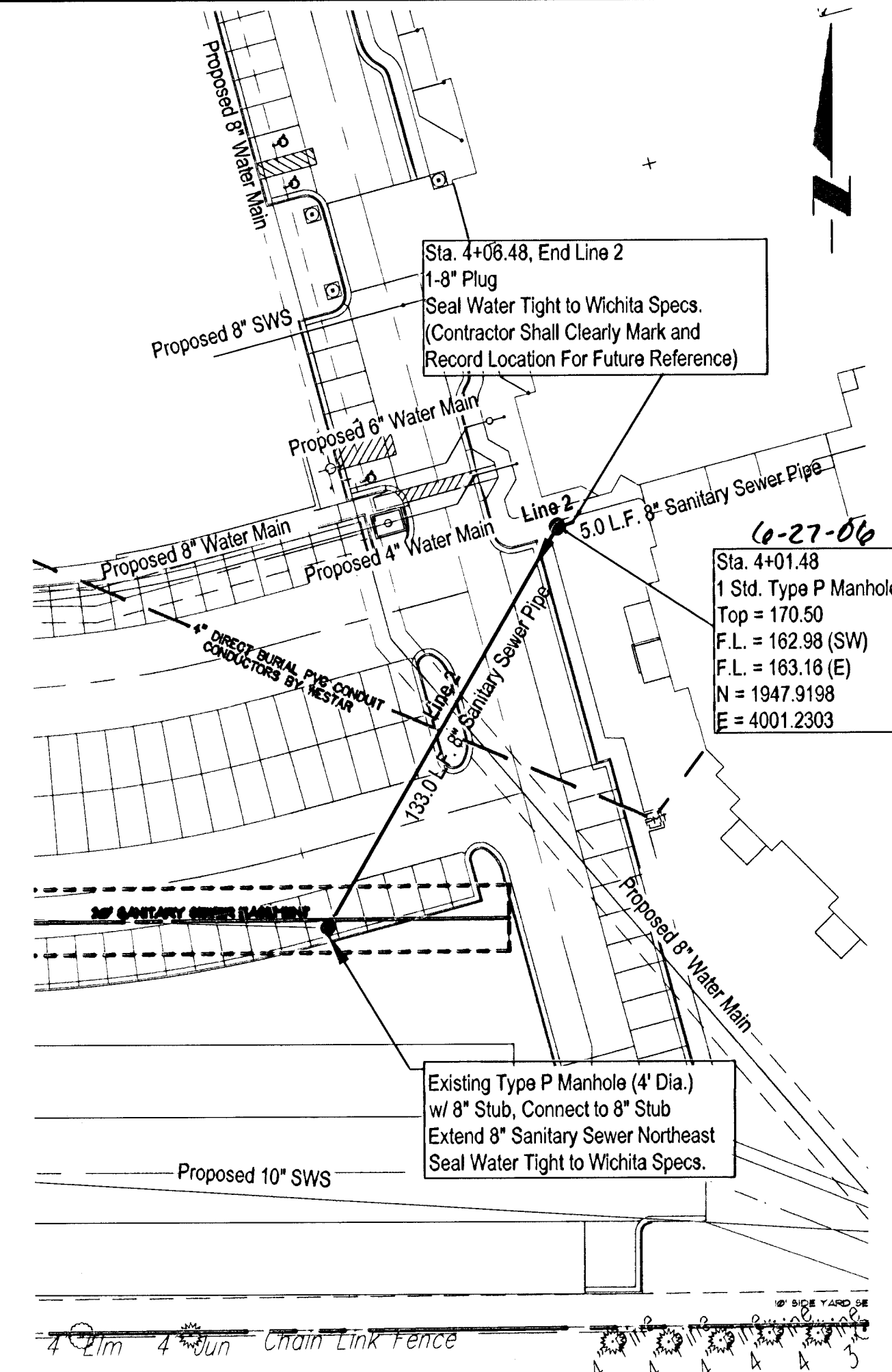
*Mies Construction Co, Inc. - Contractor
 CED- Inspector
 Released 7/21/06
 As-Built
 .pdf by JDL 7/31/06*

BENCH MARKS:

Benchmark:
 City of Wichita disk at NE corner of 21st & Tyler
 Elevation: 170.95 City Datum
 Elevation: 1358.35 N.G.V.D.
 On Site Benchmark:
 Top of fire hydrant on west side of Tyler 86.5' West
 and 116' North of Southwest Corner of Plat.
 Elevation: 168.56 City Datum
 Elevation: 1355.96 N.G.V.D.

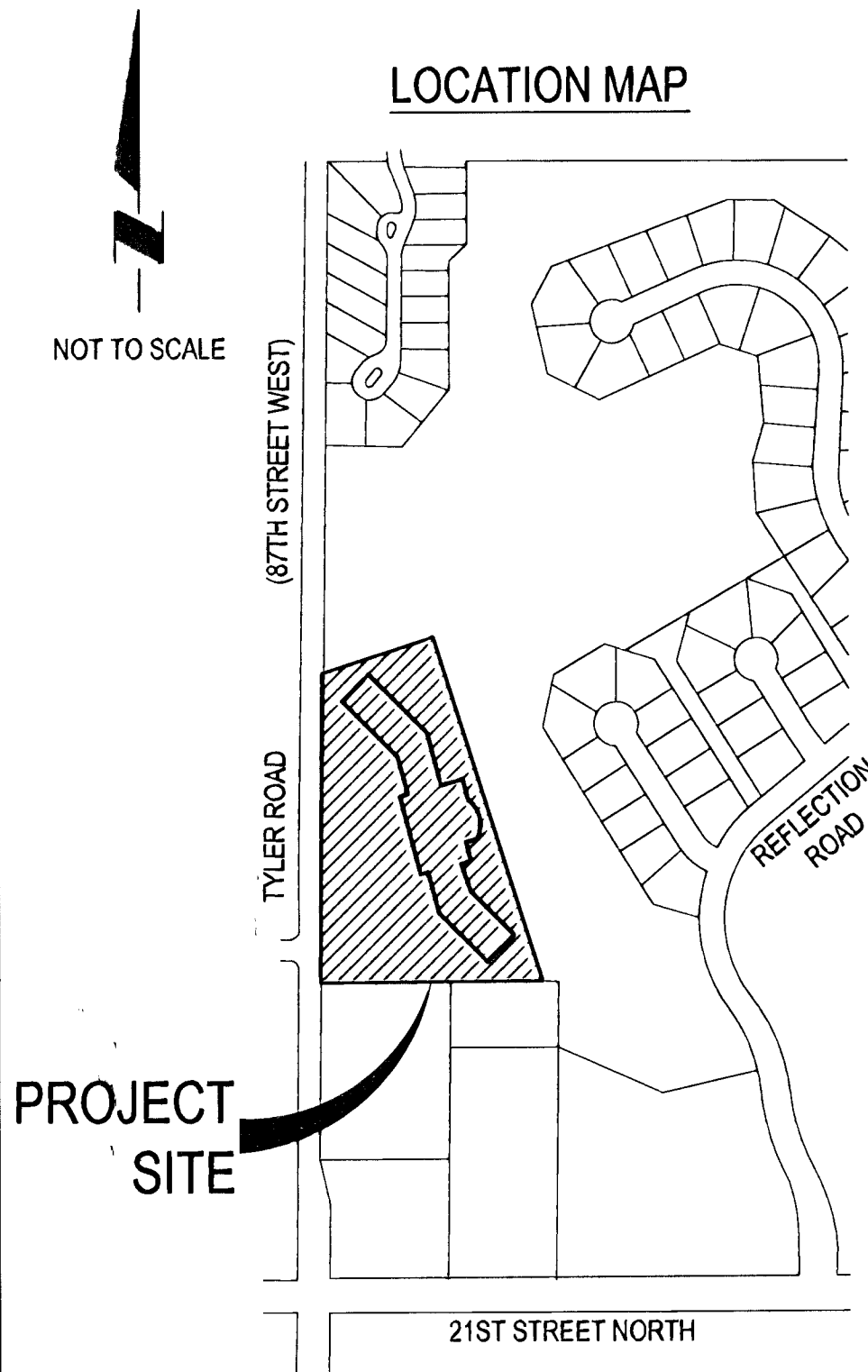


SANITARY SITE PLAN - PUBLIC



SANITARY SITE PLAN - PRIVATE

Scale: Horiz. 1"=40'
 Vert. 1"=5'



LOCATION MAP

GENERAL NOTES

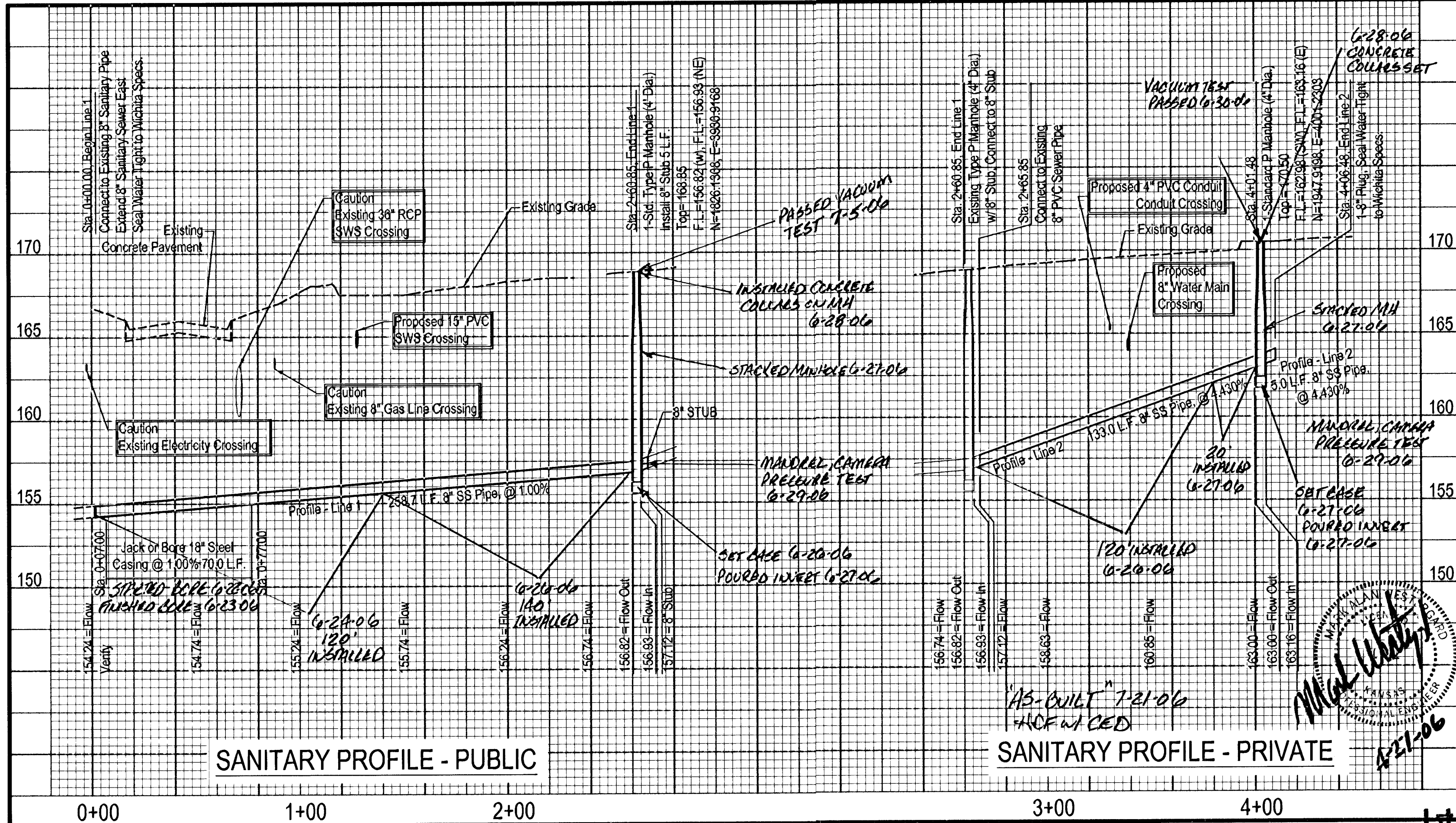
- Contractor will be required to provide notice to utility companies a minimum of forty-eight (48) hours prior to any excavation, as follows:
 Kansas One-Call 687-2470
 The Contractor must notify the following in case of an emergency:
 Cox Communications 262-0661
 Kansas Gas Service Company 383-8600
 Kansas Gas & Electric Company 383-8600
 Peoples Gas Company 1-800-303-0357
 Southwestern Bell Telephone Company 1-800-870-8390
 City of Wichita Water Department 268-4908
 City of Wichita Sewer Department 268-4071
- Utility service lines, poles, valve boxes, meters, et cetera are to be adjusted as necessary by others prior to construction unless the plans specifically call for their adjustment by the Contractor or unless the plans specifically identify a utility to be adjusted by its owner during construction. Existing utilities and their location, as shown on the plans represent the best information obtainable for design and shall be field verified. The contractor will be required to work around existing utilities within the right-of-way which do not conflict with proposed construction.
- Contractor shall not start work on the project until the project inspector is assigned to the project and is present on the site. Contractor shall not start on the project until all necessary bonds and permits have been obtained. Any work done without inspection will be required to be uncovered for inspection.
- All disturbed R/W areas not intended for pavement or sidewalk construction shall be seeded with Kansas Premium Fescue Blend at a rate of 8 lb./1000 Sq. Ft., fertilized with a 18-20-6 ratio at a rate of 4 lb./1000 Sq. Ft., and mulched with Prairie Hay at a rate of 92 lb./1000 Sq. Ft. Mulch shall be "patted" with forks or punched into soil to reduce loss due to wind.
- The Contractor shall be responsible for maintaining continuous flow of sewage through construction. Contractor's proposed method for maintaining sewage flow shall be approved by the Engineer. Cost of maintaining flow of sewage through construction will not be paid for directly and this cost shall be considered as subsidiary to the other pay items of work.
- Rubble from the removal of miscellaneous structures and excess excavation which is to be wasted shall be disposed of on sites to be provided by the Contractor. These sites shall be approved by the Engineer as to suitability, appearance and site location. Locations that, in the opinion of the Engineer, will leave an unsightly appearance will not be approved. All disposal sites must be approved by the Kansas Department of Health and Environment. Material either stockpiled or disposed of in a flood plain would require a Kansas State Board of Agriculture permit. Any material dumped in waters of the United States or wetlands is subject to U.S. Corps. of Engineers permitting regulations. Any material buried or stockpiled beyond approved construction limits would require additional archaeological investigations unless buried in a previously approved borrow location.
- All sanitary sewer pipe and appurtenances shall be installed in accordance with City of Wichita, Kansas Standard Specifications for the Construction of City Projects dated March 1998.

APPROVED AS NOTED
 BY CITY ENGINEER OF WICHITA

Sanitary Sewers *VRH 5/2/06*

NOTE TO CONTRACTORS
 Installation, inspection and testing for this project is to be provided by a Licensed Consulting Engineering Firm under contract with the Owner/Developer. Said inspection to be in accordance with the City of Wichita standard construction engineering practices and certified by a Licensed Professional Engineer. No work shall be performed in dedicated easements or public right-of-way by the Contractor without such inspection nor shall any work be commenced without written authorization by the City Engineer. All Construction and Materials shall comply with the City of Wichita Specifications and Standards (on file and available in the City Engineer's Office).

NOTE:
 THE COORDINATE SYSTEM WAS ESTABLISHED BY THE ORIGINAL SURVEY PROVIDED BY PROFESSIONAL ENGINEERING CONSULTANTS, P.A. DATED DECEMBER 2001, JOB No. 00761



SANITARY PROFILE - PUBLIC

SANITARY PROFILE - PRIVATE

E&A CONSULTING GROUP, INC.
 ENGINEERS • PLANNERS • SURVEYORS

7130 SOUTH 29TH STREET, SUITE D
 LINCOLN, NE 68516-5841
 PHONE: (402) 420-7217
 FAX: (402) 420-7218

8200 Cody Drive - Suite G2
 Lincoln, Nebraska 68512
 P * 402.420.2311
 F * 402.420.2324
 888-6700
 FAX: (402) 685-5656



Reflection Ridge Adult Living Community
 Wichita, Kansas - 67205

2300 North Tyler Road

PROJECT NO. 200513.01
 DATE 04-28-2006
 REVISIONS

Sheet 2 of 2
 SAN SHEET

"As-Built"