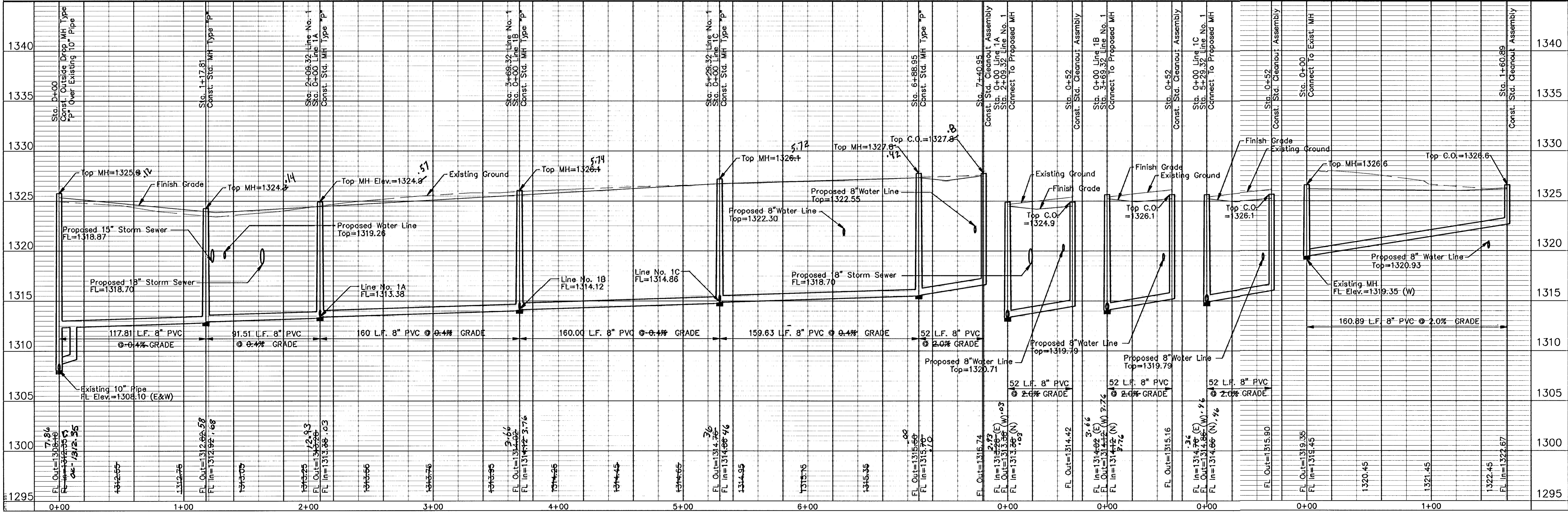


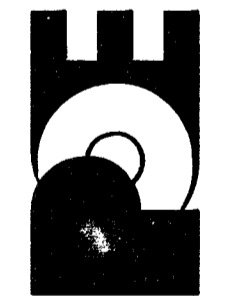
LINE NO. 1

LINE NO. 1A LINE NO. 1B LINE NO. 1C LINE NO. 2



OAK CLIFF ESTATES 6TH ADDITION
 SANITARY SEWER IMPROVEMENTS
 SEWERLINE NO. 1, 1A, 1B, 1C & 2
 CITY OF WICHITA, KANSAS
 JAMES ARMOUR, P.E. - CITY ENGINEER
 1695 PPS (607861)

POE & ASSOCIATES, INC.
 CONSULTING ENGINEERS
 5940 E. Central, Suite 200 • Wichita, KS 67208-4242
 Phone 316/685-4114 • FAX 316/685-4444



FINAL

Designed By: T. Austin
 Drawn By: S. Schmitt
 POC Job No.: 821\Oak Cliff\base-ss-rev.dwg
 Date: 08/30/2006