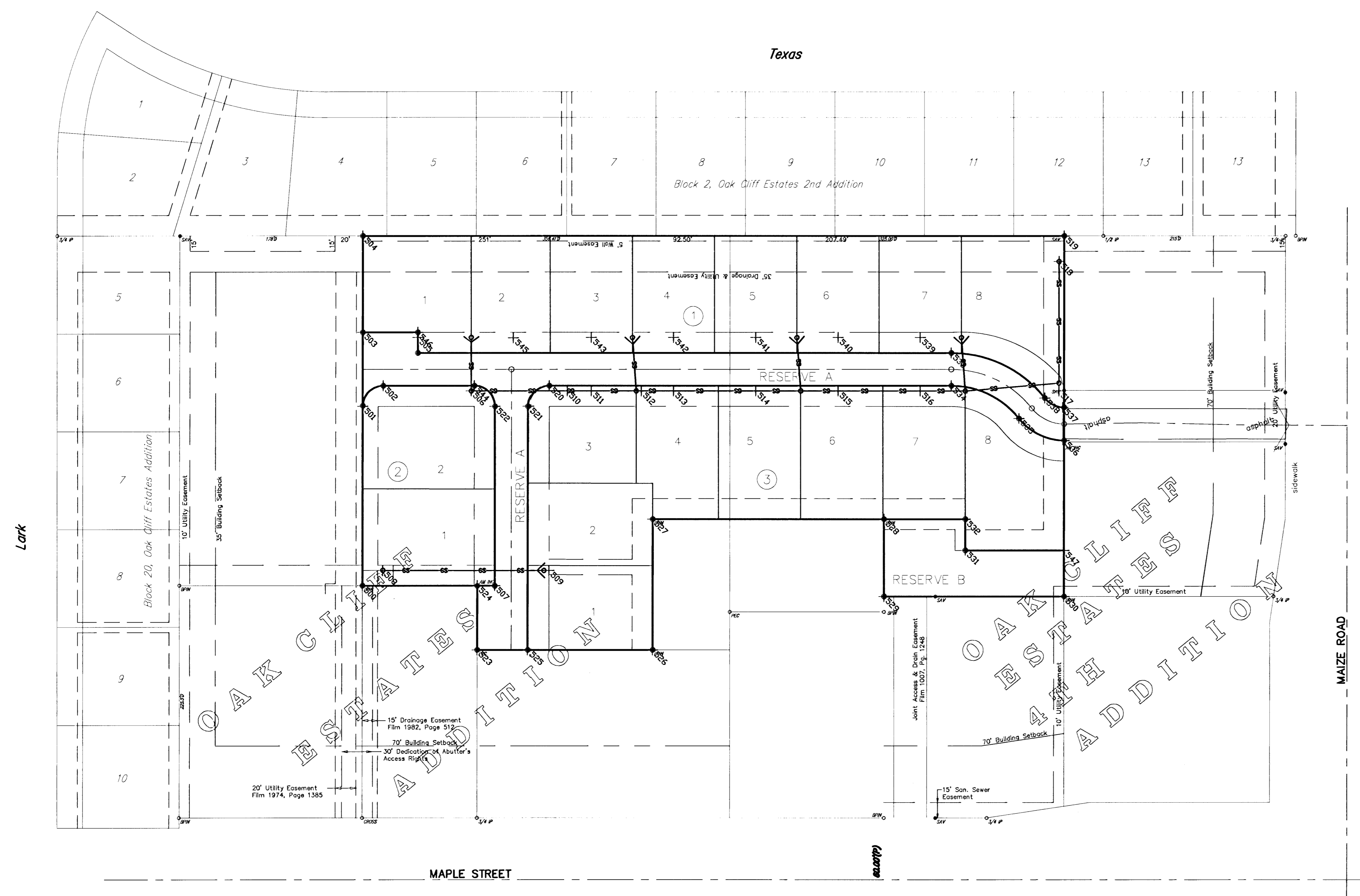


Scale 1" = 60'

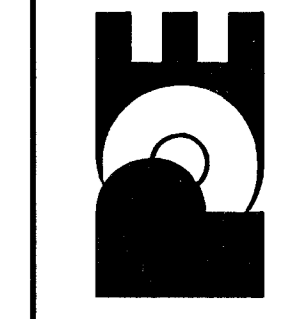


PNT #	NORTHING	EASTING
500	9660.50	10176.83
501	9834.57	10177.25
502	9854.53	10197.25
503	9906.53	10177.32
504	10000.00	10177.50
505	9901.53	10230.91
506	9849.53	10282.91
507	9660.50	10305.58
508	9675.46	10196.72
509	9675.29	10357.61
510	9849.53	10375.49
511	9849.53	10398.91
512	9849.53	10447.54
513	9849.53	10478.91
514	9849.53	10558.91
515	9849.53	10638.91
516	9849.53	10718.91
517	9849.53	10853.70
518	9975.12	10853.87
519	10000.00	10858.91
520	9854.53	10357.92
521	9834.57	10337.92
522	9834.49	10305.92
523	9598.00	10288.46
524	9660.50	10288.58
525	9598.00	10337.46
526	9598.00	10458.36
527	9725.00	10458.54
528	9725.00	10683.54
529	9650.00	10683.43
530	9650.00	10858.43
531	9694.83	10762.54
532	9725.00	10762.54
533	9886.53	10748.98
534	9854.53	10748.98
535	9822.70	10814.82
536	9801.47	10858.64
537	9833.47	10857.30
538	9842.57	10839.90
539	9901.53	10718.91
540	9901.53	10638.91
541	9901.53	10558.91
542	9901.53	10478.91
543	9901.53	10398.91
544	9854.53	10285.92
545	9901.15	10323.87
546	9906.53	10230.93
547	9694.83	10858.45

No.	Date	By	Approved	Revision

OAK CLIFF ESTATES 6TH ADDITION
 SANITARY SEWER IMPROVEMENTS
 SEWERLINE NO. 1, 1A, 1B & 1C
 CITY OF WICHITA, KANSAS
 JAMES ARMOUR, P.E. - CITY ENGINEER
 1985 PPS (607861)

POE & ASSOCIATES, INC.
 CONSULTING ENGINEERS
 5940 E. Central, Suite 200 • Wichita, KS 67208-4242
 Phone 316/685-4114 • FAX 316/685-4444



FINAL
 Designed By: T. Austin
 Drawn By: S. Schmidt
 Pae Job No.: 821\Oak Cliff\pae-ss-rev.dwg
 Date: 08/30/2006