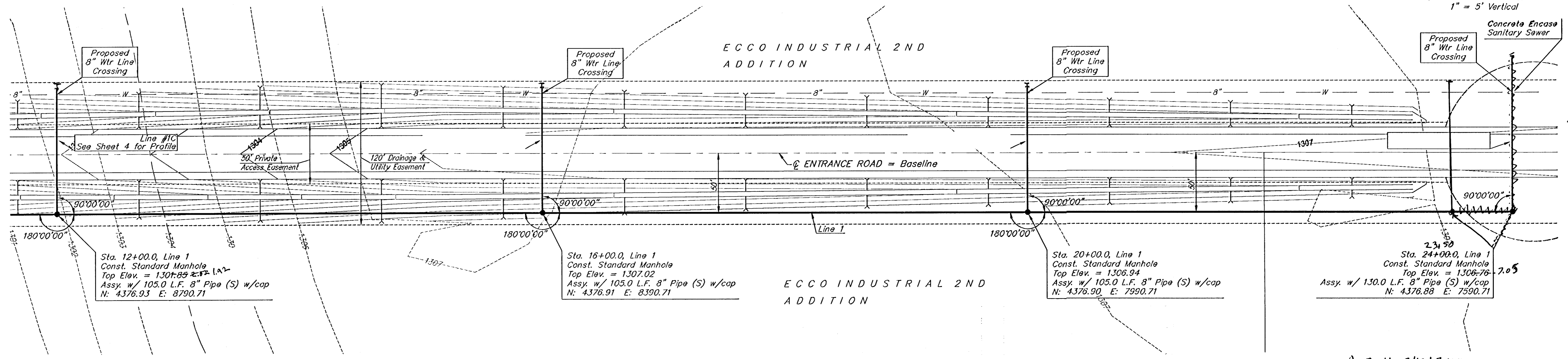


BENCHMARK:
 HOOVER ROAD AND 35TH STREET SOUTH
 CITY OF MICHITA - BENCHMARK DISC.
 NE CORNER OF DECK ON R.C.B.C. ON
 35TH ST. S., 100.00 FEET WEST OF HOOVER RD.
 ELEV. = 1297.24 NGVD29

Scale: 1" = 40' Horizontal
 1" = 5' Vertical



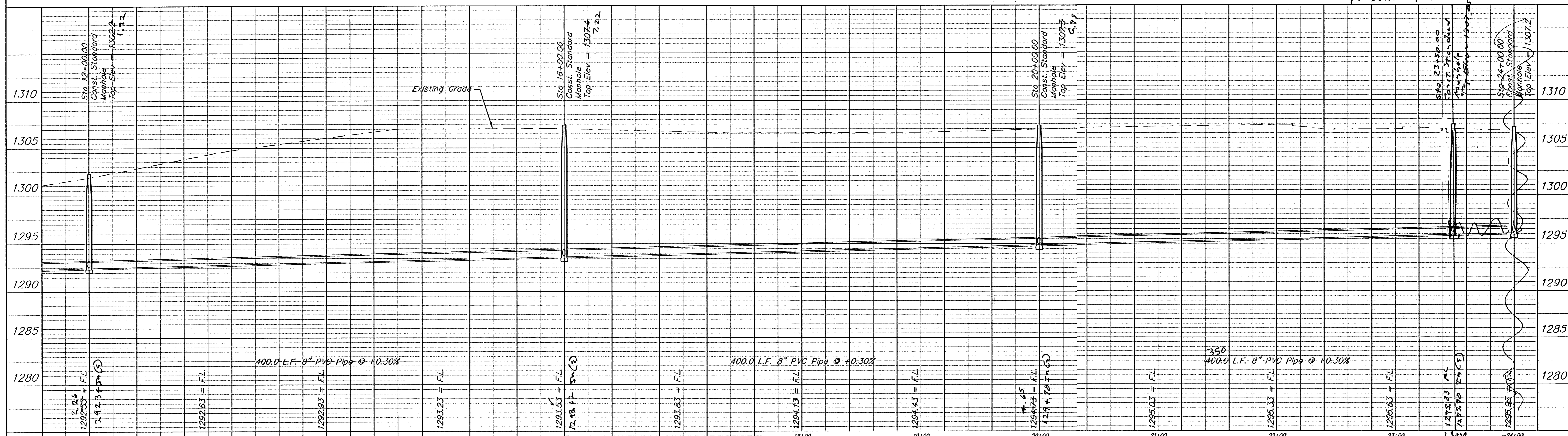
Sta. 12+00.0, Line 1
 Const. Standard Manhole
 Top Elev. = 1307.85
 Assy. w/ 105.0 L.F. 8" Pipe (S) w/cap
 N: 4376.93 E: 8790.71

Sta. 16+00.0, Line 1
 Const. Standard Manhole
 Top Elev. = 1307.02
 Assy. w/ 105.0 L.F. 8" Pipe (S) w/cap
 N: 4376.91 E: 8390.71

Sta. 20+00.0, Line 1
 Const. Standard Manhole
 Top Elev. = 1306.94
 Assy. w/ 105.0 L.F. 8" Pipe (S) w/cap
 N: 4376.90 E: 7990.71

Sta. 24+00.0, Line 1
 Const. Standard Manhole
 Top Elev. = 1306.76
 Assy. w/ 130.0 L.F. 8" Pipe (S) w/cap
 N: 4376.88 E: 7590.71

As Built 3/12/07 LAK



PROJECT NUMBER 1726 PPS (607861)		SHEET NAME Entrance Road		ENGINEERING DIRECTORY #CAD/Design	
DESIGN BLP	DRAWN MDC	APPROVED BLP	DATE 12/08	SCALE Noted	BAUGHMAN NO 08-10-HE280

**ECCO INDUSTRIAL 2ND ADDITION
 SANITARY SEWER
 STA. 12+00 to STA. 24+00**

CARLSON-BAUGHMAN
 ENGINEERING | SURVEYING | GIS | MAPPING
 1506 Vine St. Hays, KS 67501 P 785-828-3219 F 785-828-2152

SHEET 3
 OF 7