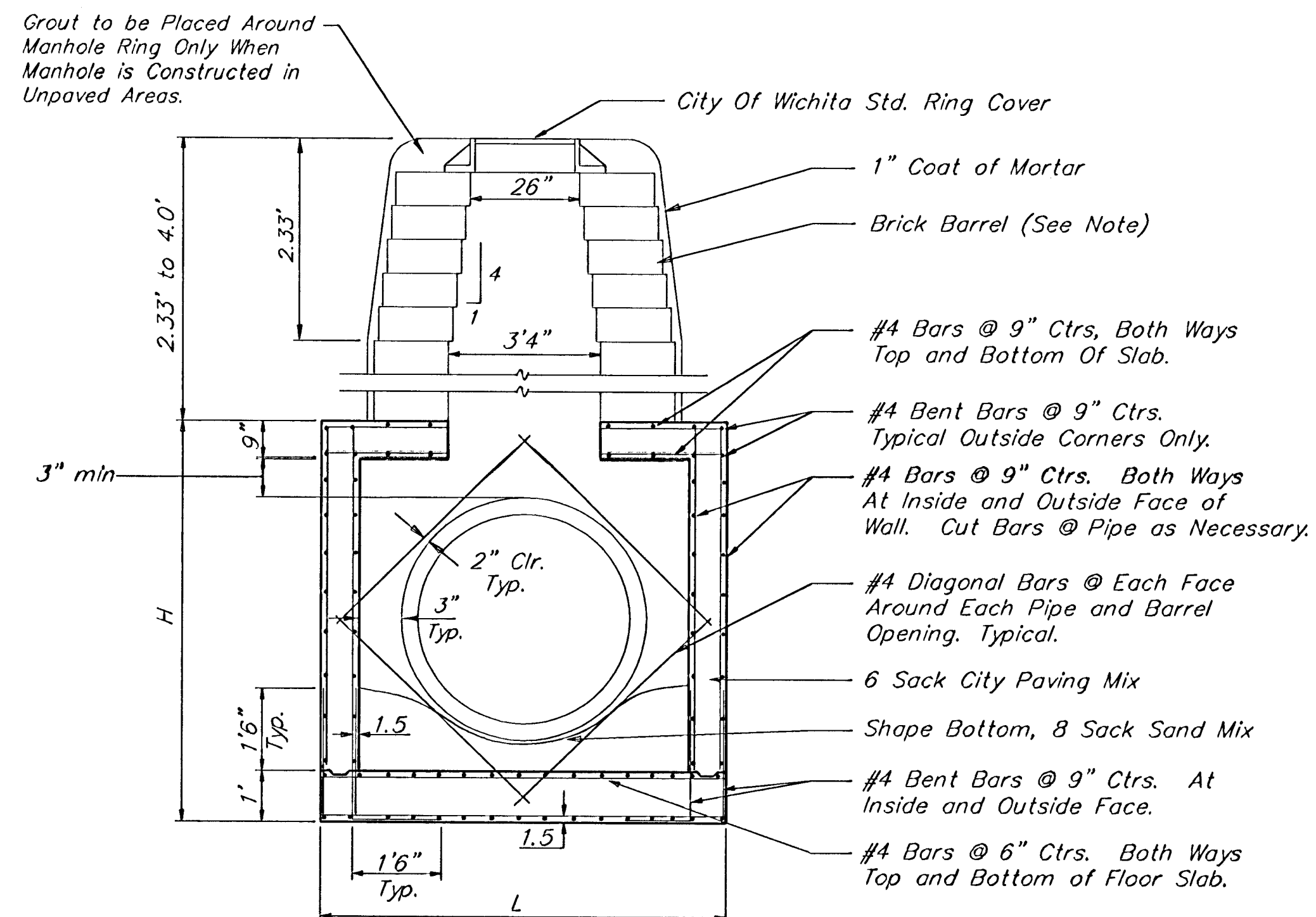
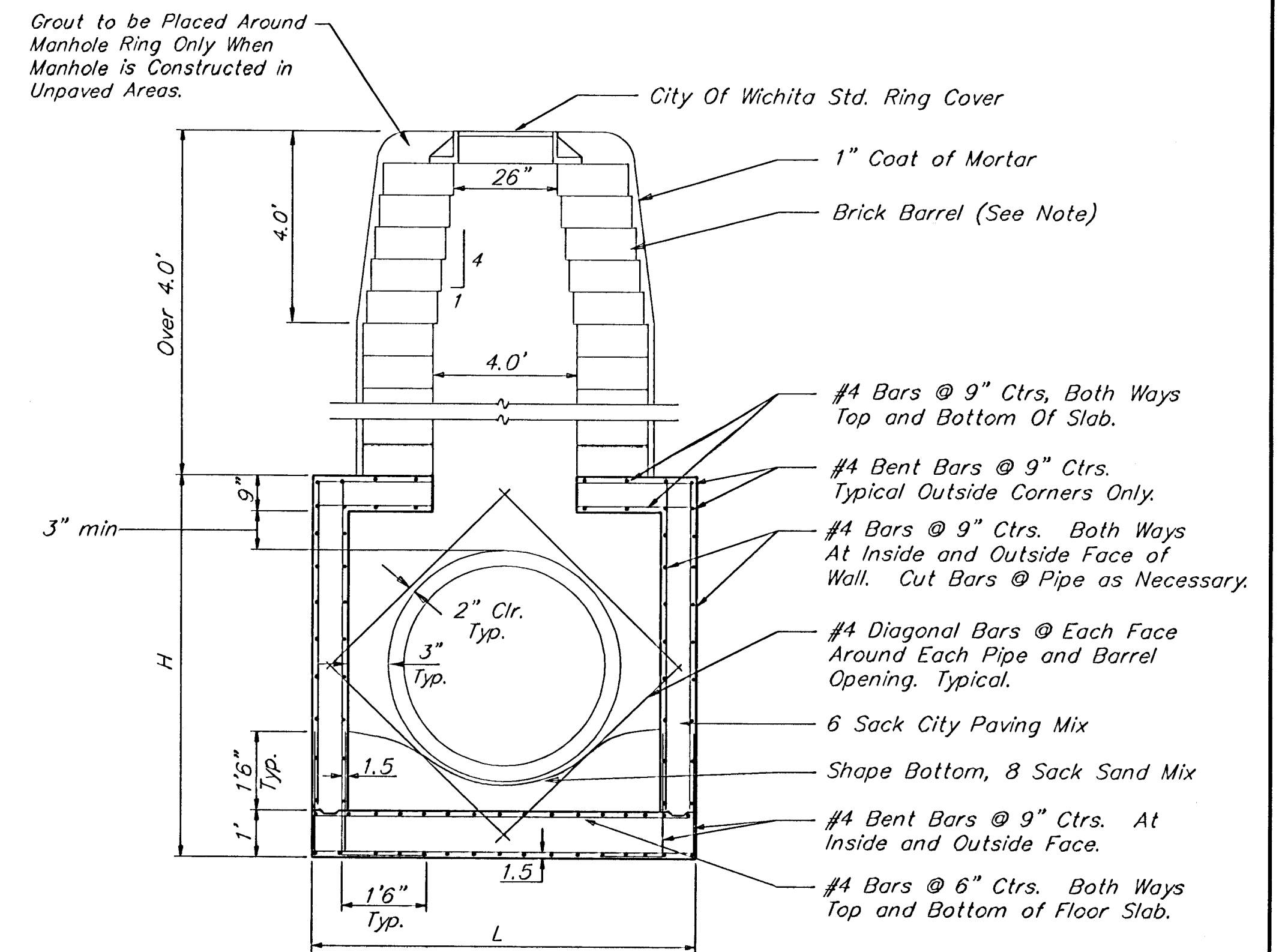


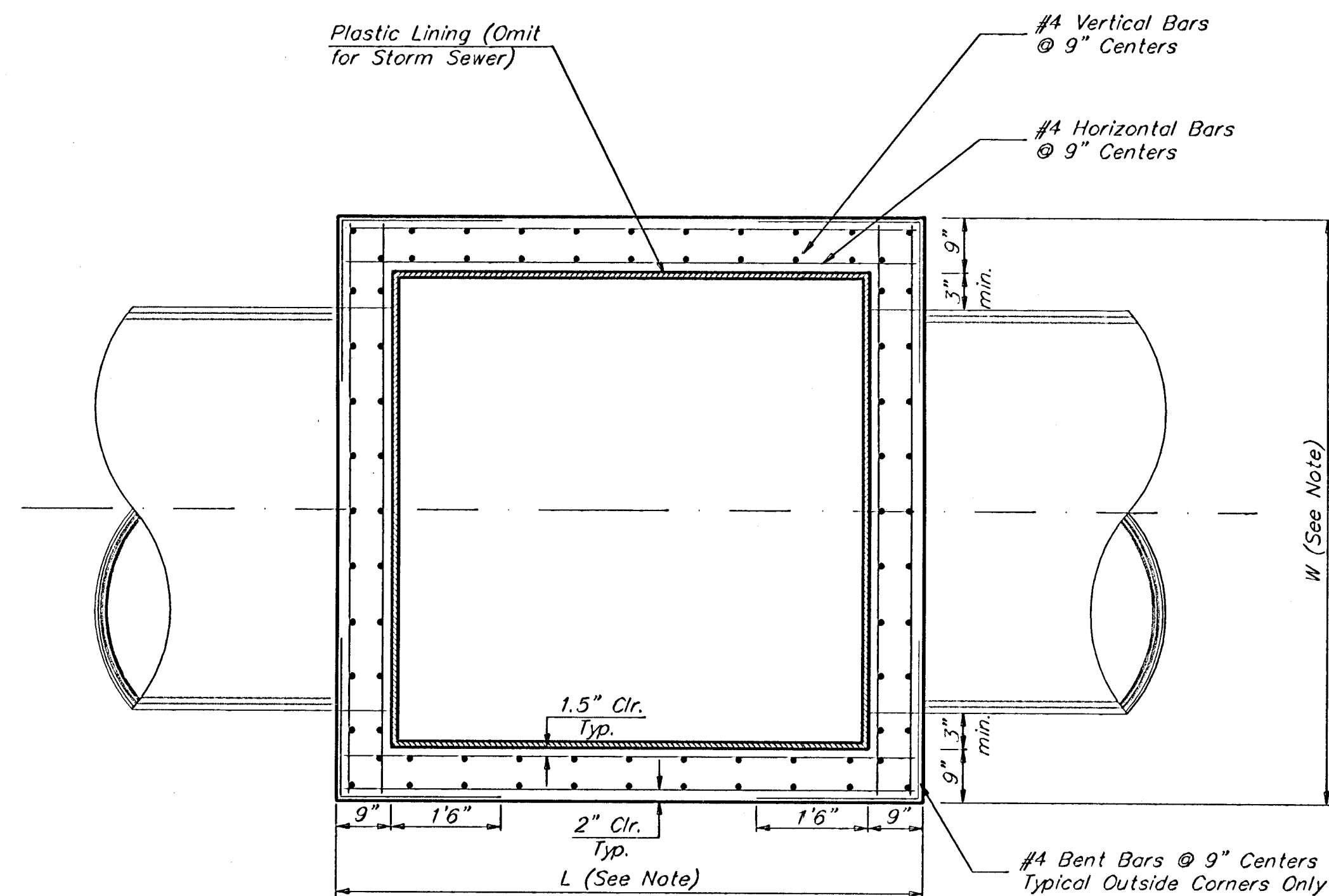
**REINFORCED CONCRETE MANHOLE**  
DEPTH OF STACK: 0' TO 2.33'



**REINFORCED CONCRETE MANHOLE**  
DEPTH OF STACK: 2.33' TO 4.0'



**REINFORCED CONCRETE MANHOLE**  
DEPTH OF STACK: OVER 4.0'



TOP VIEW

**Notes:**

Brick barrels less than 16' deep shall have 8" walls except when located within public street or alley pavement; then the wall shall be 12". Brick barrels more than 16' deep shall have 12" walls. The "L" and "W" dimensions shall be a minimum of 5'6" for brick barrels with 8" walls and 6'2" for brick barrels with 12" walls when the brick barrels are over 4' in height. Completed manhole shall be without leaks and watertight.

Concrete wall thicknesses shown represents manhole type located within traffic bearing areas. Manhole wall, base, & top dimensions may be reduced when manholes are not subject to vehicle loads. Contractor shall be required to submit shop drawings to the Engineer for approval.

<b>Baughman</b>		CITY OF WICHITA STANDARD <b>REINFORCED CONCRETE MANHOLE DETAIL</b>	
Baughman Company, P.A. 315 Ellis St. Wichita, KS 67211 P 316-262-7271 F 316-262-0149			
ENGINEERING   SURVEYING   PLANNING   LANDSCAPE ARCHITECTURE			
PROJECT NUMBER 1731 PPS (607861)	DESIGN C.O.W.	DRAWN STATE	
REVISIONS	APPROVED	DATE	01/11/2007
	SCALE NONE		
			<b>3 OF 6</b>
McCullough Shop Exp/vcmhcity.dwg		06-12-E098	