

PLAN	CHECKED	DATE
	CHECKED	

PROFILE	CHECKED	DATE
	CHECKED	

Scale: 10'-0"=200' 10/25/06 AM by CSL
 Plot Scale: 1"=40'-0" 10/25/06 10:36:27 AM by CSL
 © 2006 (06/27/01) (06/27-01-C-SSP) CHANGECORDER_01

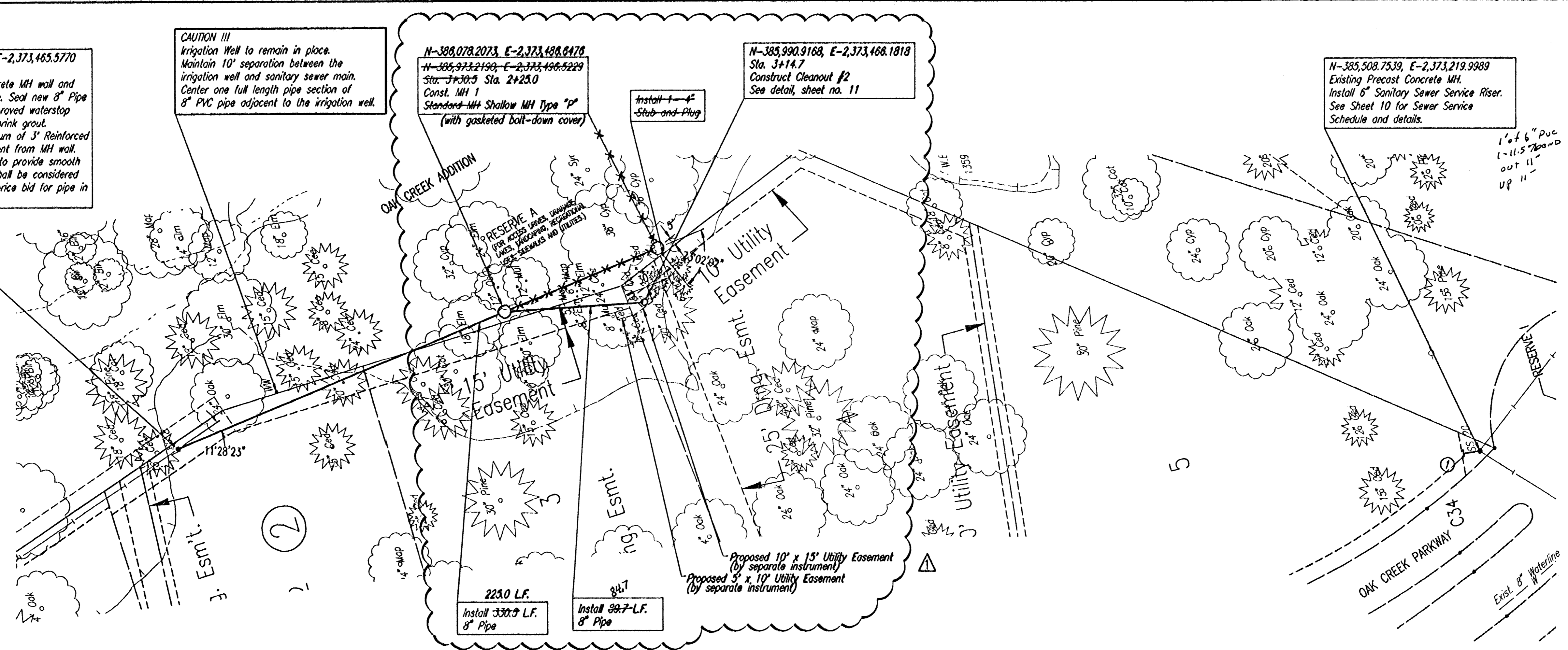
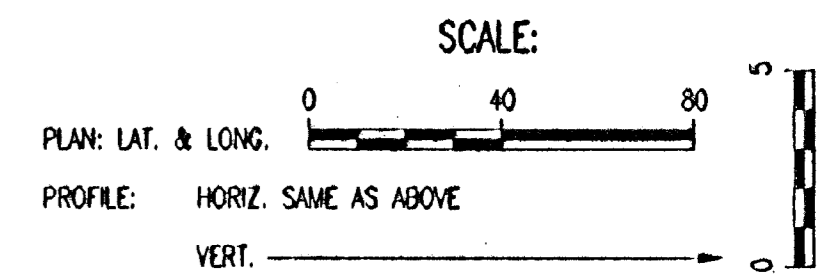
N-386,302.2185, E-2,373,465.5770
 Sta. 0+00.0
 Core existing concrete MH wall and
 Install New 8" Pipe. Seal new 8" Pipe
 to MH with an approved waterstop
 gasket and non-shrink grout.
 Construct a minimum of 3' Reinforced
 Concrete Encasement from MH wall.
 Reshape MH floor to provide smooth
 flow. This work shall be considered
 subsidiary to the price bid for pipe in
 place.

CAUTION !!!
 Irrigation Well to remain in place.
 Maintain 10' separation between the
 irrigation well and sanitary sewer main.
 Center one full length pipe section of
 8" PVC pipe adjacent to the irrigation well.

N-388,078.2073, E-2,373,498.8476
 N-385,973.2193, E-2,373,496.5229
 Sta. 3+30.5 Sta. 2+25.0
 Const. MH 1
 Standard-MH Shallow MH Type "P"
 (with gasketed ball-down cover)

N-385,990.9168, E-2,373,468.1818
 Sta. 3+14.7
 Construct Cleanout #2
 See detail, sheet no. 11

N-385,508.7539, E-2,373,219.9989
 Existing Precast Concrete MH.
 Install 6" Sanitary Sewer Service Riser.
 See Sheet 10 for Sewer Service
 Schedule and details.

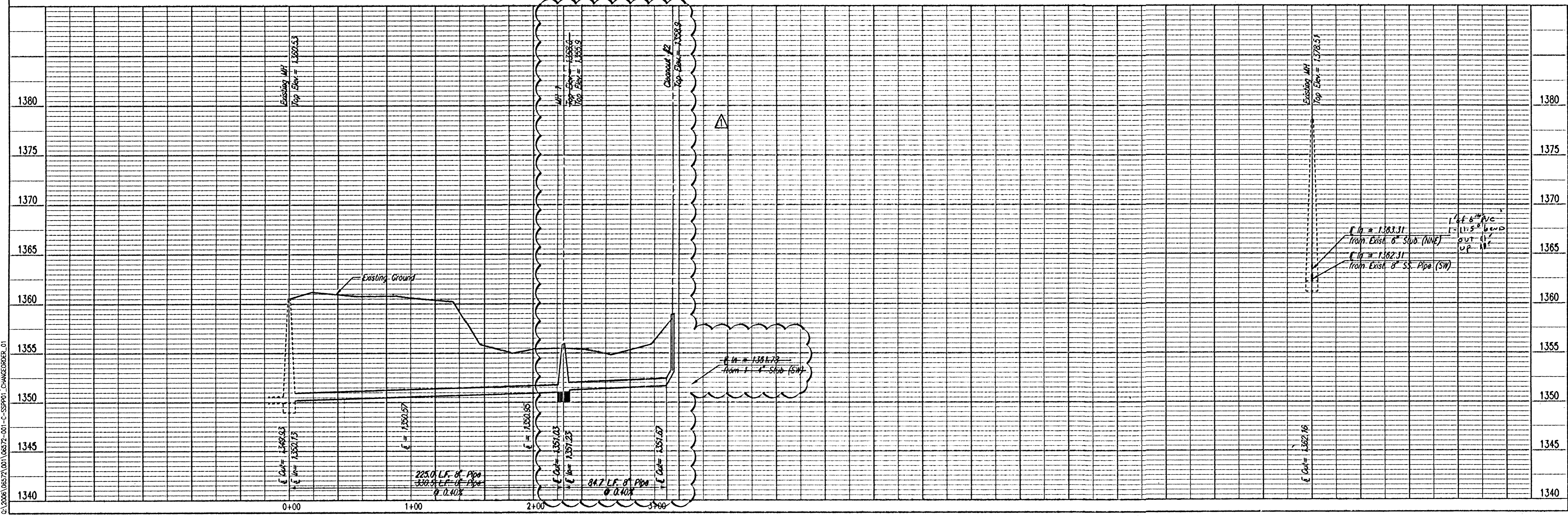


①
 ②
 DENOTES SEWER SERVICE.
 SEE SHEET NO. 10 FOR SEWER
 SERVICE SCHEDULE AND DETAILS



SANITARY SEWER LINE NO. 1

SEWER SERVICE TO EXISTING MH



OAK CREEK 3RD - PHASE 1
 PRIVATE SANITARY SEWER EXTENSION
 SANITARY SEWER LINE NO. 1

Professional Engineering Consultants, P.A.
 303 S. COPPER - WICHITA, KANSAS 67202
 316-262-2091 • FAX 316-262-3068

Designed By: MDK
 Drawn By: JAN
 Job No.: 35-06572-001-5526
 Date: September 2006

10/20/06	Date
MDK	By
CHANGECORDER_01 - CHANGED LINE NO. 1 ALIGNMENT	Revision