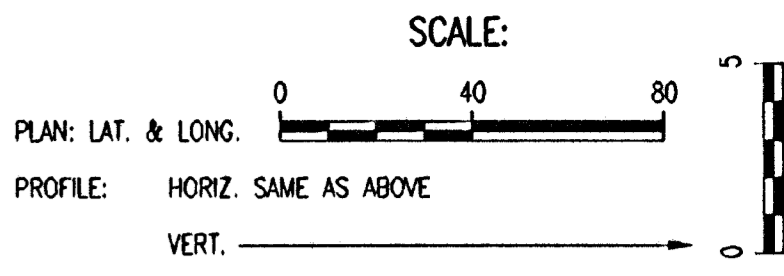
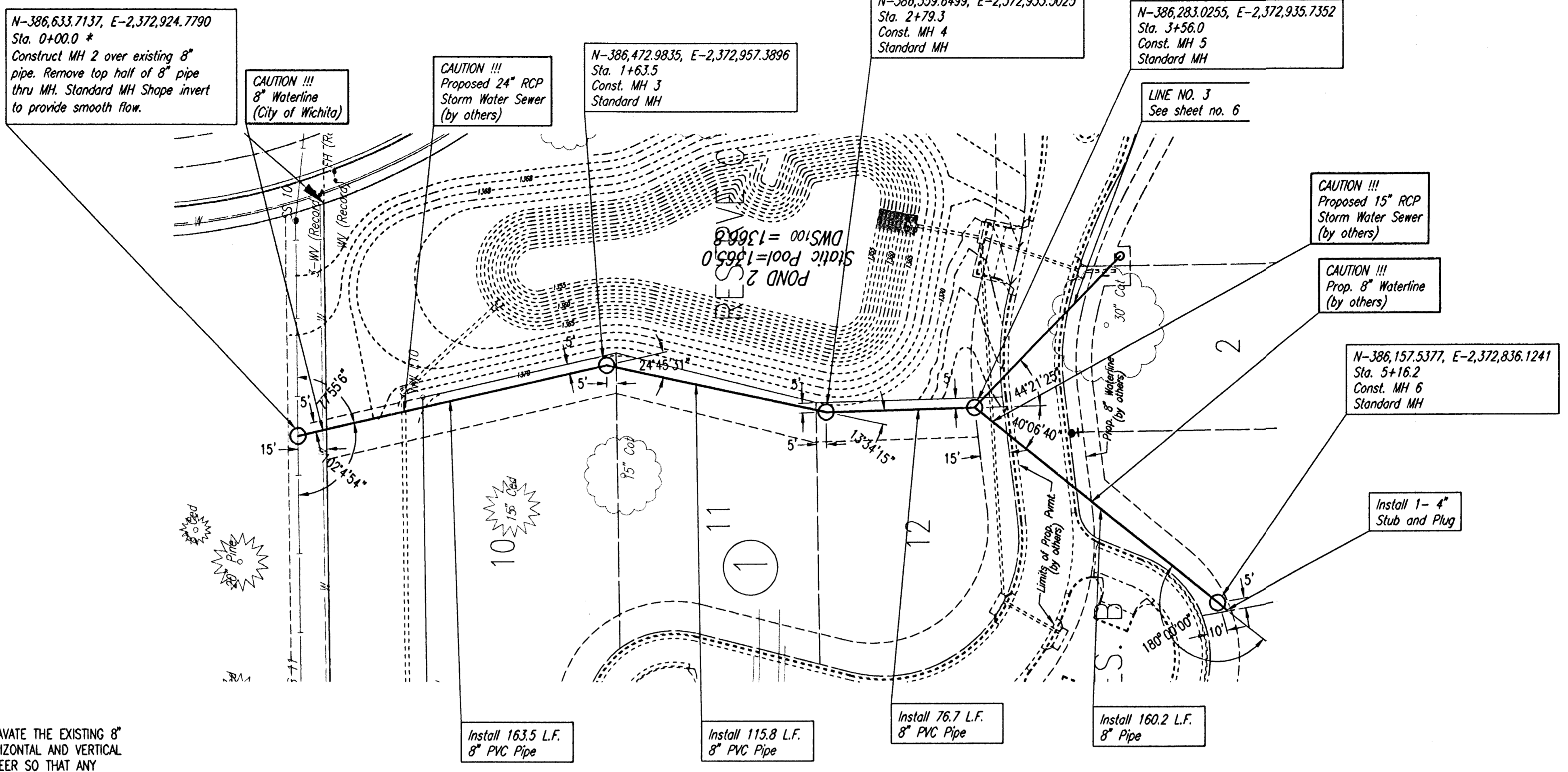


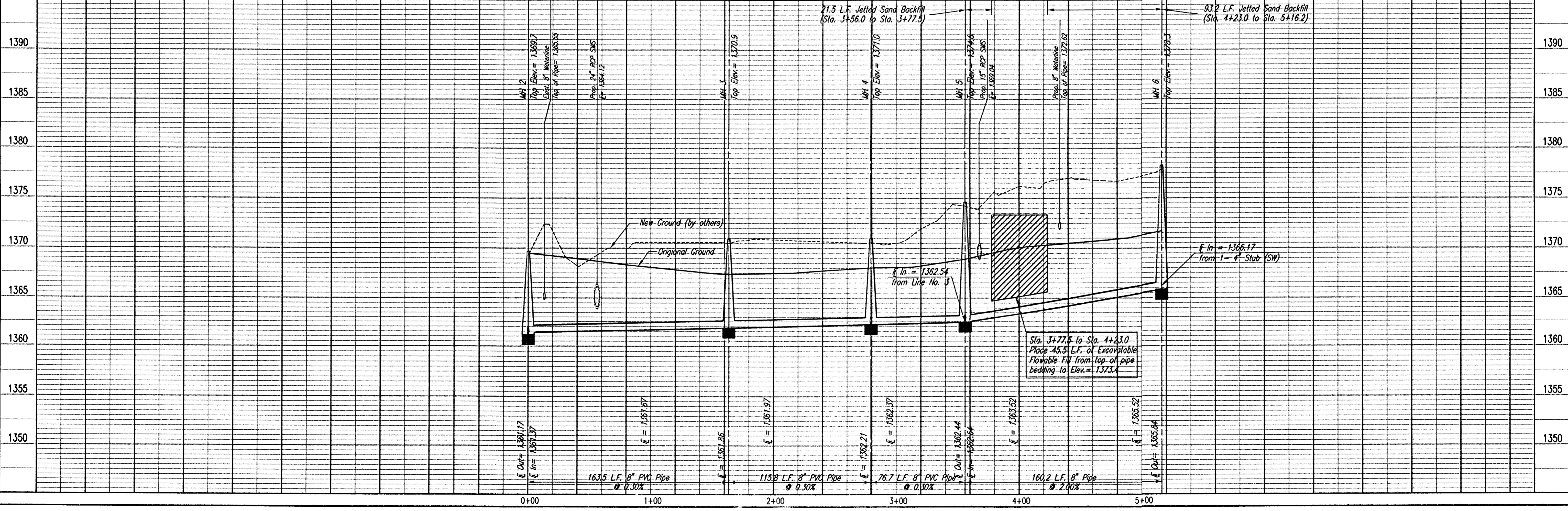
PLAN  
 CHECKED  
 CHECKED  
 BY  
 DATE

PROFILE  
 CHECKED  
 CHECKED  
 BY  
 DATE



\* PRIOR TO BEGINNING CONSTRUCTION, THE CONTRACTOR SHALL EXCAVATE THE EXISTING 8" PVC PIPE AT SANITARY SEWER STATION 0+00.0 TO VERIFY ITS HORIZONTAL AND VERTICAL LOCATION. THE PIPE LOCATION SHALL BE REPORTED TO THE ENGINEER SO THAT ANY NECESSARY PLAN MODIFICATIONS CAN BE MADE. ANY ADDITIONAL LABOR OR MATERIALS NECESSARY TO COMPLETE THE CONNECTION SHALL BE CONSIDERED SUBSIDIARY TO THE PROJECT.

SANITARY SEWER LINE NO. 2



Saved 10-09-2006 11:42:52 AM by JAN  
 Plot Scale 1:40 10-09-2006 11:47:25 AM by JAN  
 C:\WORK\06572\001\06572-001-C-SSP02

OAK CREEK 3RD - PHASE 1  
 PRIVATE SANITARY SEWER EXTENSION  
**SANITARY SEWER LINE NO. 2**  
 Professional Engineering Consultants, P.A.  
 303 S. TOPEKA • WICHITA, KANSAS 67202  
 316-262-2691 • FAX 316-262-3003  
 Designed By MDK  
 Drawn By JAN  
 Job No. 35-06572-001-5526  
 Date September 2006  
 Sheet 5 of 15  
 JAMES L. ARMOUR, P.E. - CITY ENGINEER  
 CITY OF WICHITA PRIVATE PROJECT NO. 1709PSP (607861)