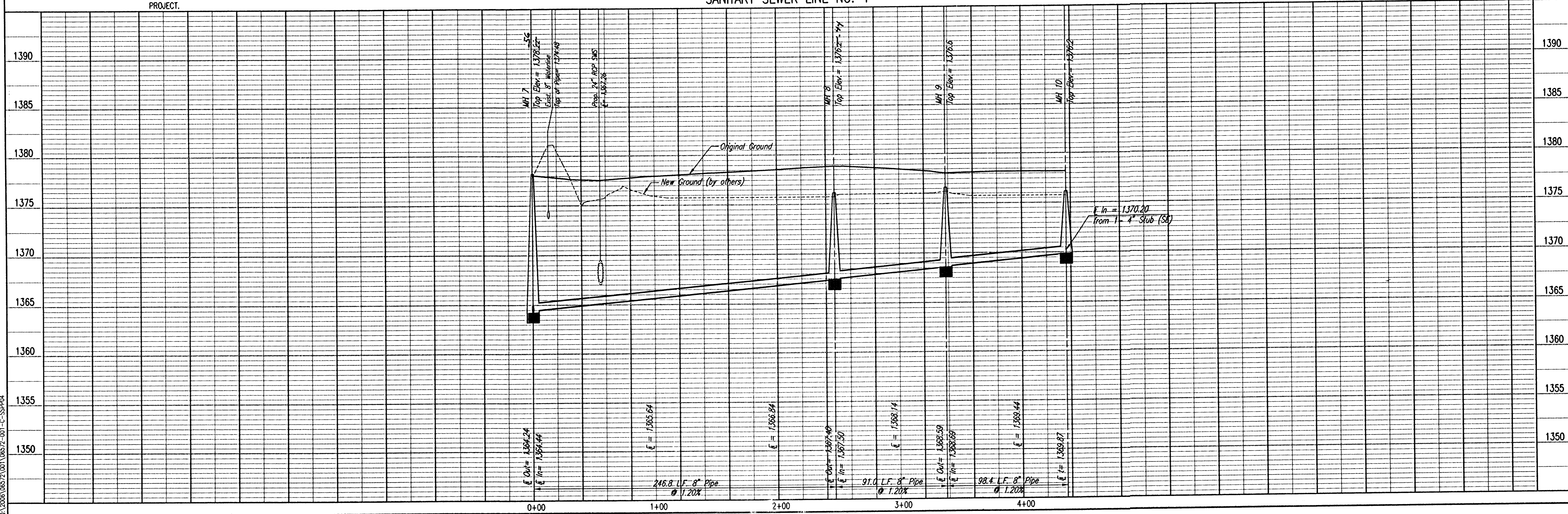


PLAN	CHECKED	CHECKED
BY		
DATE		

PROFILE	CHECKED	CHECKED
BY		
DATE		

Saved: 10-03-2006 8:57:00 AM by JLN  
 C:\Users\jln\Documents\106572-001-C-SSPRA



\* PRIOR TO BEGINNING CONSTRUCTION, THE CONTRACTOR SHALL EXCAVATE THE EXISTING 8" PVC PIPE AT SANITARY SEWER STATION 0+00.0 TO VERIFY ITS HORIZONTAL AND VERTICAL LOCATION. THE PIPE LOCATION SHALL BE REPORTED TO THE ENGINEER SO THAT ANY NECESSARY PLAN MODIFICATIONS CAN BE MADE. ANY ADDITIONAL LABOR OR MATERIALS NECESSARY TO COMPLETE THE CONNECTION SHALL BE CONSIDERED SUBSIDIARY TO THE PROJECT.

N=386,628.6181, E=2,372,625.4127  
 Sta. 0+00.0 \*  
 Construct MH 7 over existing 8" pipe. Remove top half of 8" pipe thru MH. Standard MH Shape invert to provide smooth flow.

CAUTION !!!  
 Proposed 24" RCP Storm Water Sewer (by others)

CAUTION !!!  
 Proposed 24" RCP Storm Water Sewer (by others)

N=386,383.1427, E=2,372,600.2216  
 Sta. 2+46.8  
 Const. MH 8  
 Standard MH

N=386,298.5893, E=2,372,633.7986  
 Sta. 3+37.8  
 Const. MH 9  
 Standard MH

N=386,202.1636, E=2,372,614.0368  
 Sta. 4+36.2  
 Const. MH 10  
 Standard MH

SANITARY SEWER LINE NO. 4

