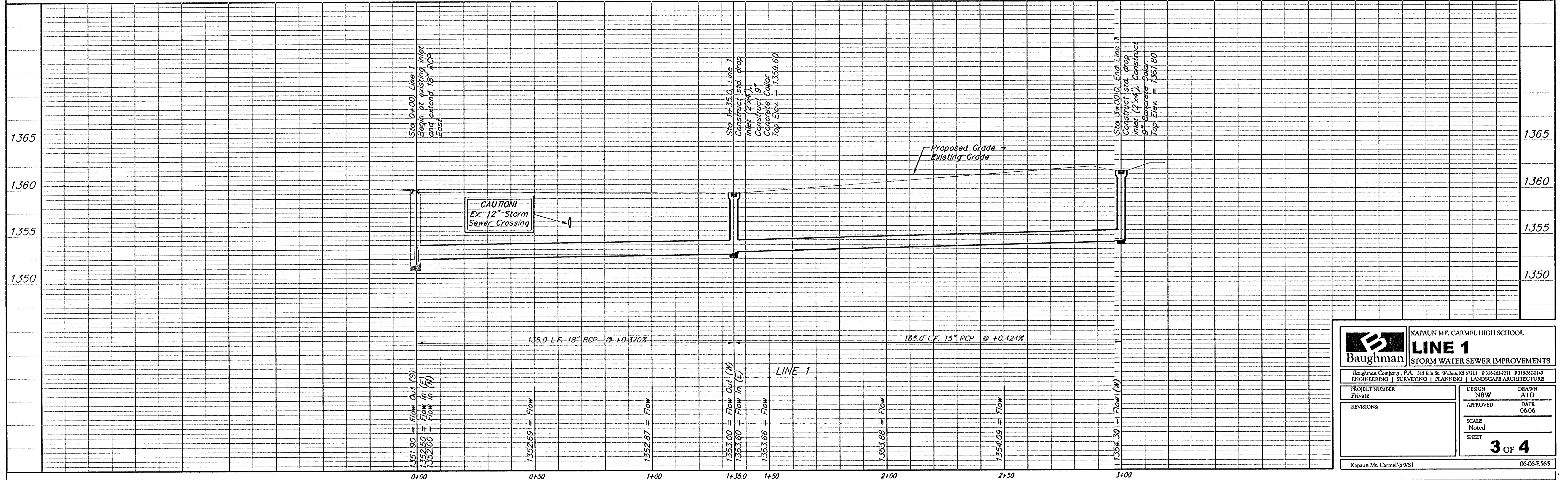
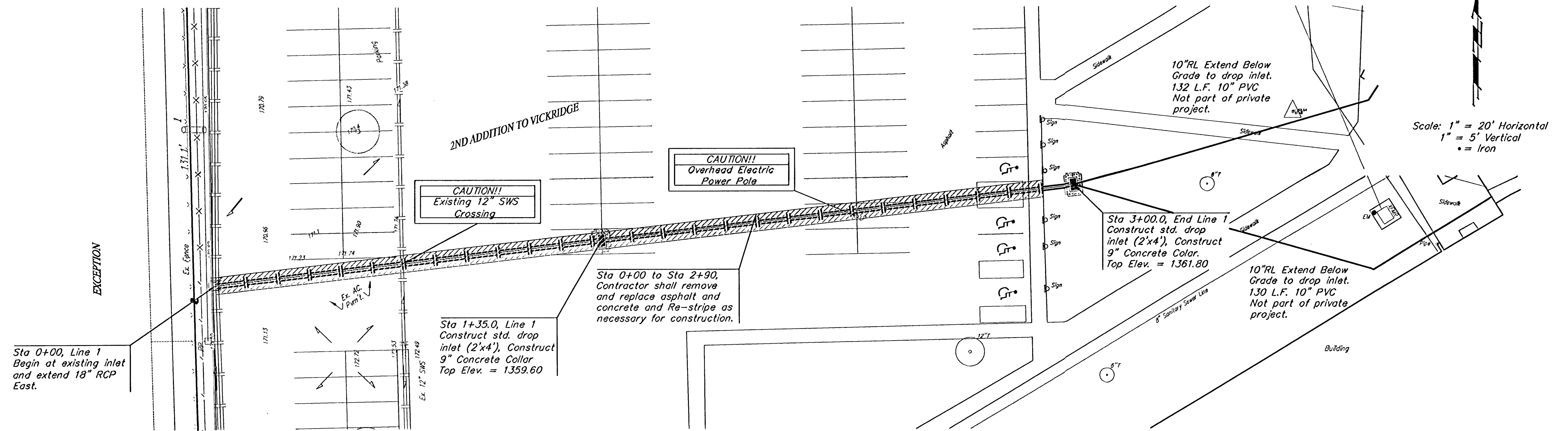


**BENCHMARK:**  
 □ Top of Curb lying on the west curb return of the 2nd drive entrance east, at the SW corner of subject property  
 Elevation = 1357.34



<b>Baughman</b>		KAPAUN MT. CARMEL HIGH SCHOOL	
<b>LINE 1</b>		<b>STORM WATER SEWER IMPROVEMENTS</b>	
Baughman Company, P.A. 315 Ella St. Wichita, KS 67211 P 316-263-7271 F 316-262-0149 ENGINEERING   SURVEYING   PLANNING   LANDSCAPE ARCHITECTURE			
PROJECT NUMBER Private	DESIGN NBW	DRAWN ATD	DATE 06-06
REVISIONS:	SCALE Noted	SHEET	
		<b>3 OF 4</b>	
Kapaun Mt. Carmel SWS1		06-06-E565	