

**BENCHMARKS:**  
 BM #1: Benchmark on top of north 48" headwall in Reserve "B" between Lots 18-19, Block B, Falcon Falls 3rd Addition. Elev. = 1349.35 NGVD29

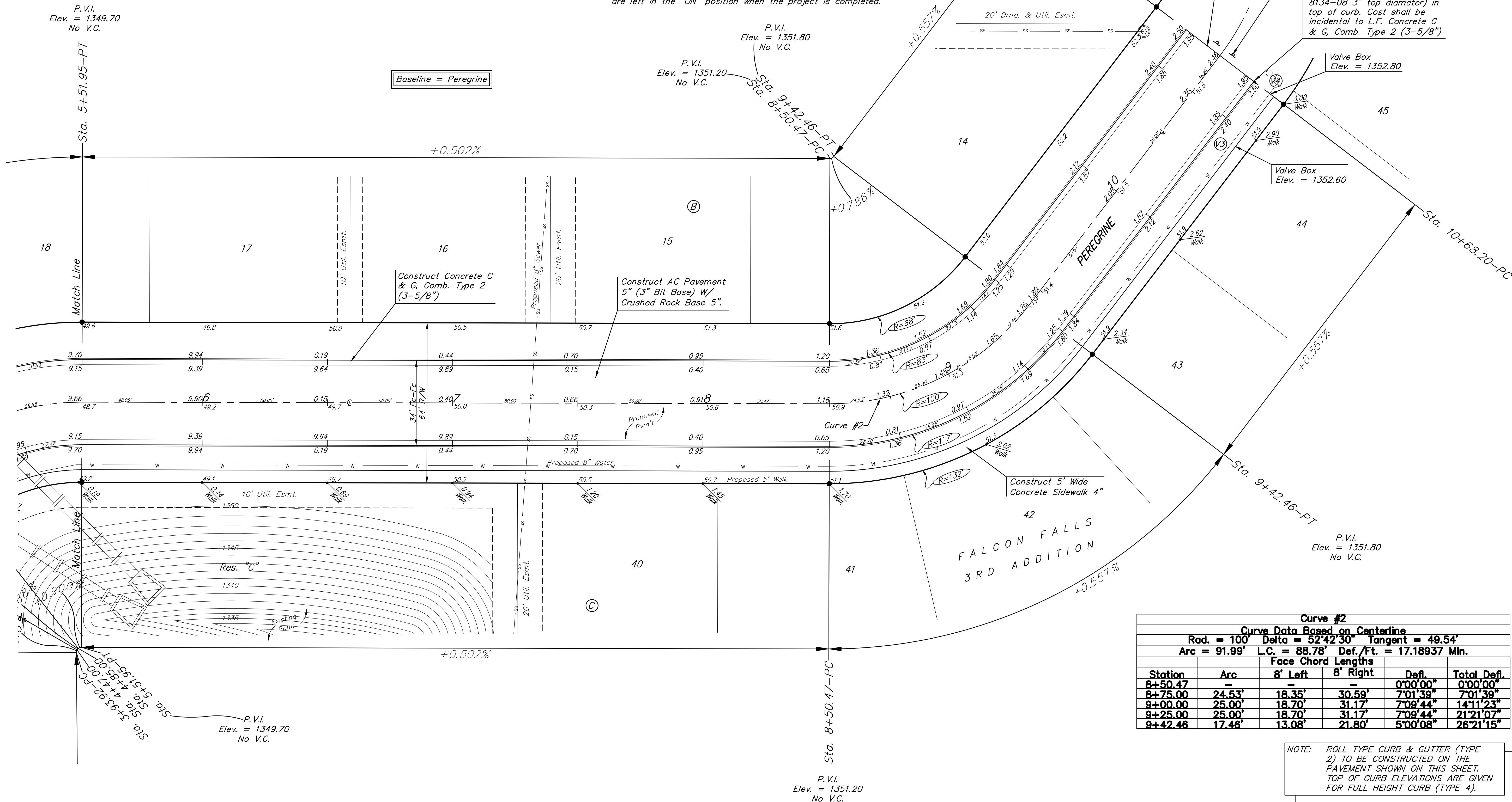
BM #2: Benchmark on top of north 48" headwall in Reserve "C" north of the NE corner of Lots 30, Block C, Falcon Falls 3rd Addition. Elev. = 1343.63 NGVD29

| Subdivision Bench Marks           |  |           |
|-----------------------------------|--|-----------|
| Street & Station                  | Location Description   | Elevation |
| Peregrine<br>10+68.20, 17.25' Rt. | Adjacent to Fire Hydrant at X. End of X. Curb Return of Street and Street. |           |

**WATER VALVE LOCATION TABLE**

| VALVE NUMBER | STREET    | BASELINE STATION | OFFSET DISTANCE | OFFSET DIRECTION |
|--------------|-----------|------------------|-----------------|------------------|
| V3           | Peregrine | 10+43.20         | 25.00'          | Rt.              |
| V4           | Peregrine | 10+68.20         | 25.00'          | Rt.              |

Paving contractor will be responsible to operate all water valves on the project, in the presence of the inspector, to ensure accessibility to the valves, and that all valves (except blowoffs) are left in the "ON" position when the project is completed.



Sta 10+68.20, End construction of AC Pavement 5" (3" Bit Base) W/ Crushed Rock Base 5" and 5' Wide Concrete Sidewalk 4".

Sta 10+70.20, 4' Lt.&Rt. Install type 1 barricade w/ E.O.R. marker as shown (Relocated from Sta. 0+42.27). (See detail, sheet 9.)

Sta 10+68.20, 17.25' Rt. Install subdivision benchmark (Flat survey marker No. 8134-08 3" top diameter) in top of curb. Cost shall be incidental to L.F. Concrete C & G, Comb. Type 2 (3-5/8")

Valve Box Elev. = 1352.80

Valve Box Elev. = 1352.60

P.V.I. Elev. = 1351.80 No V.C.

P.V.I. Elev. = 1349.70 No V.C.

P.V.I. Elev. = 1351.20 No V.C.

| Curve #2                       |        |                   |          |                          |             |
|--------------------------------|--------|-------------------|----------|--------------------------|-------------|
| Curve Data Based on Centerline |        |                   |          |                          |             |
| Rad. = 100'                    |        | Delta = 52°42'30" |          | Tangent = 49.54'         |             |
| Arc = 91.99'                   |        | L.C. = 88.78'     |          | Def./Ft. = 17.18937 Min. |             |
| Station                        | Arc    | 8' Left           | 8' Right | Defl.                    | Total Defl. |
| 8+50.47                        | -      | -                 | -        | 0°00'00"                 | 0°00'00"    |
| 8+75.00                        | 24.53' | 18.35'            | 30.59'   | 7°01'39"                 | 7°01'39"    |
| 9+00.00                        | 25.00' | 18.70'            | 31.17'   | 7°09'44"                 | 14°11'23"   |
| 9+25.00                        | 25.00' | 18.70'            | 31.17'   | 7°09'44"                 | 21°21'07"   |
| 9+42.46                        | 17.46' | 13.08'            | 21.80'   | 5°00'08"                 | 26°21'15"   |

NOTE: ROLL TYPE CURB & GUTTER (TYPE 2) TO BE CONSTRUCTED ON THE PAVEMENT SHOWN ON THIS SHEET. TOP OF CURB ELEVATIONS ARE GIVEN FOR FULL HEIGHT CURB (TYPE 4).

