

SANITARY SEWER EXTENSION CONQUEST NORTH 2ND ADDITION PROJECT NUMBER 1670 PPS (607861)

GENERAL NOTES

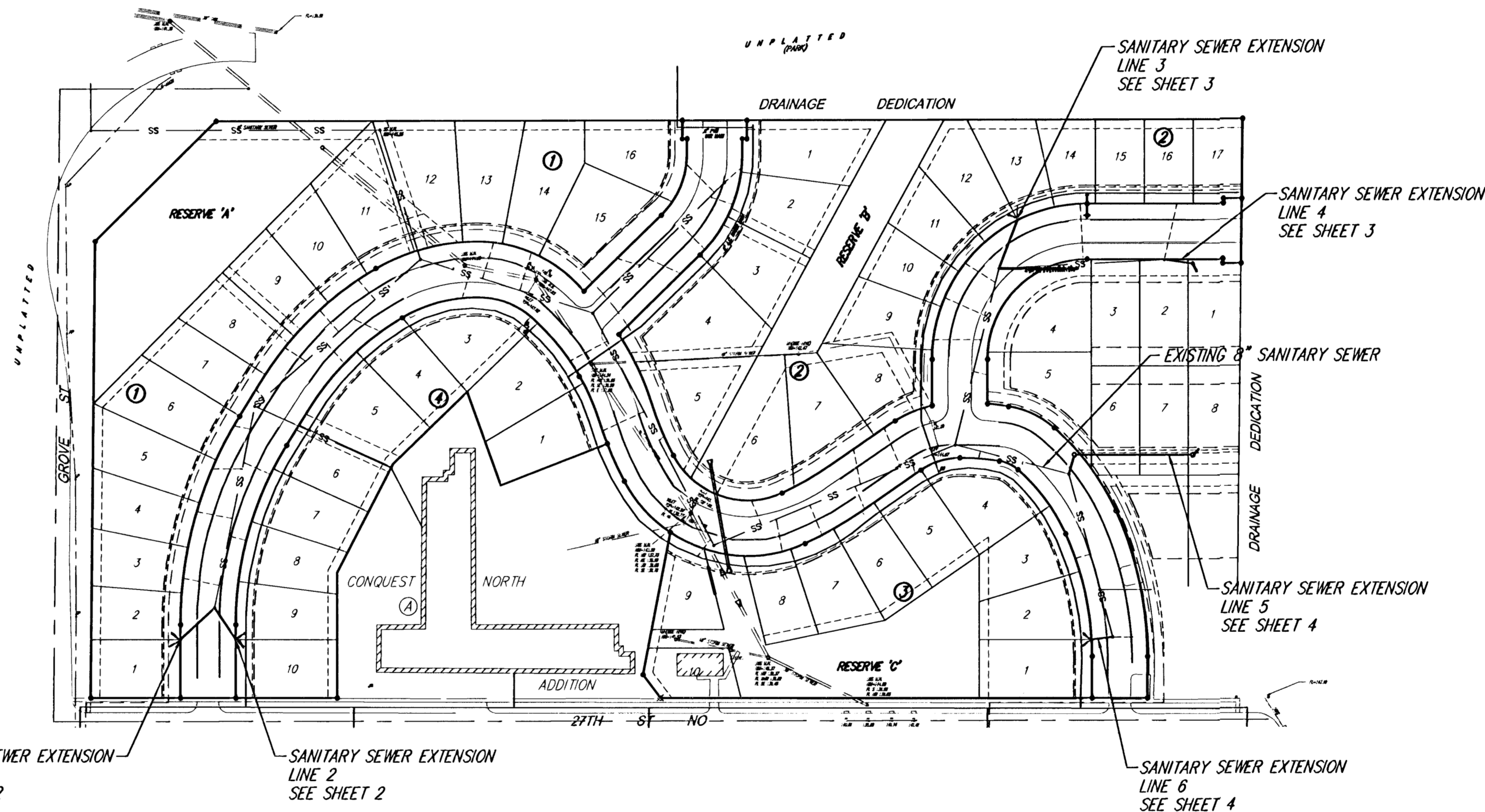
1. Contractor will be required to provide a minimum advance notice of forty-eight (48) hours to utility companies prior to starting any excavation as follows:

Kansas One-Call 687-2470

The Contractor must notify the following in case of an emergency:

Cox Communications 262-0661
 Kansas Gas Service 383-8600
 Westar 383-8600
 Aquila Energy 1-800-303-0357
 Southwestern Bell Telephone Company 1-800-286-8313
 City of Wichita Water Department 262-6000
 City of Wichita Sewer Maintenance 262-6000

- Existing utilities and their location, as shown on the plans, represent the best information obtainable for design. Location information has been obtained from the various utility companies and is either from company record drawings or company-provided field locations. The Contractor will be required to work around existing utilities within the right-of-way which do not conflict with proposed construction.
- This project is located within the limits of a larger project which will include building construction. The General Contractor for the project will submit a Storm Water Pollution Prevention Plan for the entire project prior to beginning any work on this project.
- This project is to be constructed in accordance with City of Wichita Standard Specifications for the Construction of City Projects, and Policy on Construction of Public Works Improvements by Private Contract.
- No work shall begin on this project before required bonds are submitted to the City of Wichita, and the project inspector has been notified.
- Sewage flow in the existing sanitary sewer shall be maintained at all times. The Contractor's plan for maintaining flow shall be submitted and approved by the Engineer prior to beginning work on the project.
- Access to developed property abutting project area to be maintained by contractor at all times.
- Pavement removal shown on plans to be included in Base Bid. Pavement replacement to be bid as Alternate "A".
- Backfill under private street pavement to be compacted to minimum 95% (ASTM D-698) up to 12" below pavement, and 98% for top 12".
- Sewer services to be constructed (by others) under permits from OCI.



INDEX OF SHEETS

- INDEX SHEET
- SANITARY SEWER PLAN/PROFILE (LINE 1,2)
- SANITARY SEWER PLAN/PROFILE (LINE 3,4)
- SANITARY SEWER PLAN/PROFILE (LINE 5,6)
- STANDARD TYPE P MANHOLE DETAILS
- PLAT COPY

BENCHMARKS

BENCH MARK:
 CITY STANDARD DISC @ 25TH ST NO
 & GROVE: 41' S & 21.5' E OF THE
 CENTER-LINE OF BOTH
 ELEVATION = 141.65 CITY DATUM
 ELEVATION = 1329.05 MSL

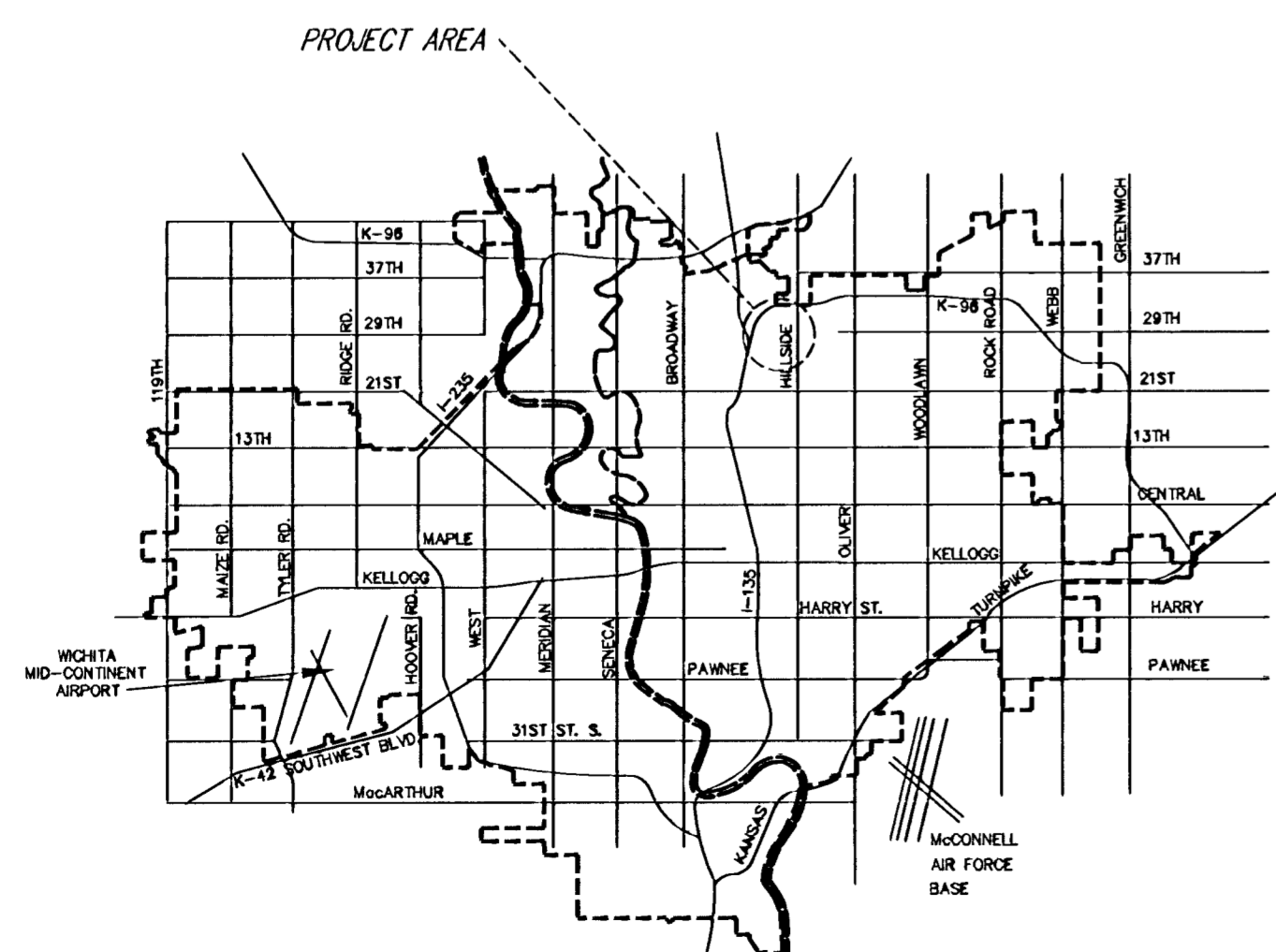
BENCH MARK:
 SQUARE CUT ON TOP OF CURB @
 27TH ST NO & GROVE; NORTH
 END OF CURB RETURN @ N.E. COR
 OF INTERSECTION
 ELEVATION = 154.76 CITY DATUM
 ELEVATION = 1342.16 MSL

APPROVED AS NOTED
 BY CITY ENGINEER OF WICHITA

Sanitary Sewers *[Signature]* 6/27/06
 Storm Sewers _____
 Driveway Approaches _____
 Water Mains _____
 Paving _____

NOTE TO CONTRACTORS

Inspection and testing for this project are to be provided by a Licensed Consulting Engineering Firm under contract with the Owner/Developer. Said inspection to be in accordance with the City of Wichita standard construction engineering practices and certified by a Licensed Professional Engineer. No work shall be performed in dedicated easements or public right-of-way by the Contractor without such inspection, nor shall any work be commenced without written authorization by the City Engineer.



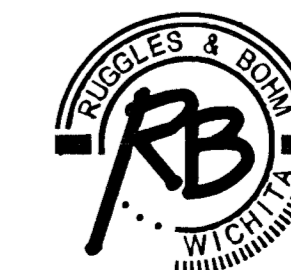
Mies Construction, Inc. - Contractor
 Kelly, RB - Inspector
 Released 9/13/06
 As-Built
 Risers + Stubs
 .pdf by JOL 9/14/06



SCALE: 1"=100'

Rev. as built 9-11-06 JCR

CITY OF WICHITA, KANSAS
JAMES L. ARMOUR, P.E., CITY ENGINEER



Ruggles & Bohm, F.A.
 Engineering, Surveying, Land Planning
 924 North Main (316) 264-8008
 Wichita, Kansas 67203 (316) 264-4621 fax
 www.rbkansas.com E-mail: info@rbkansas.com

June 27, 2006