

SANITARY SEWER EXTENSION TO SERVE OLD CHICAGO AT TOWN EAST PRIVATE PROJECT NUMBER 1647 PPS (607861)

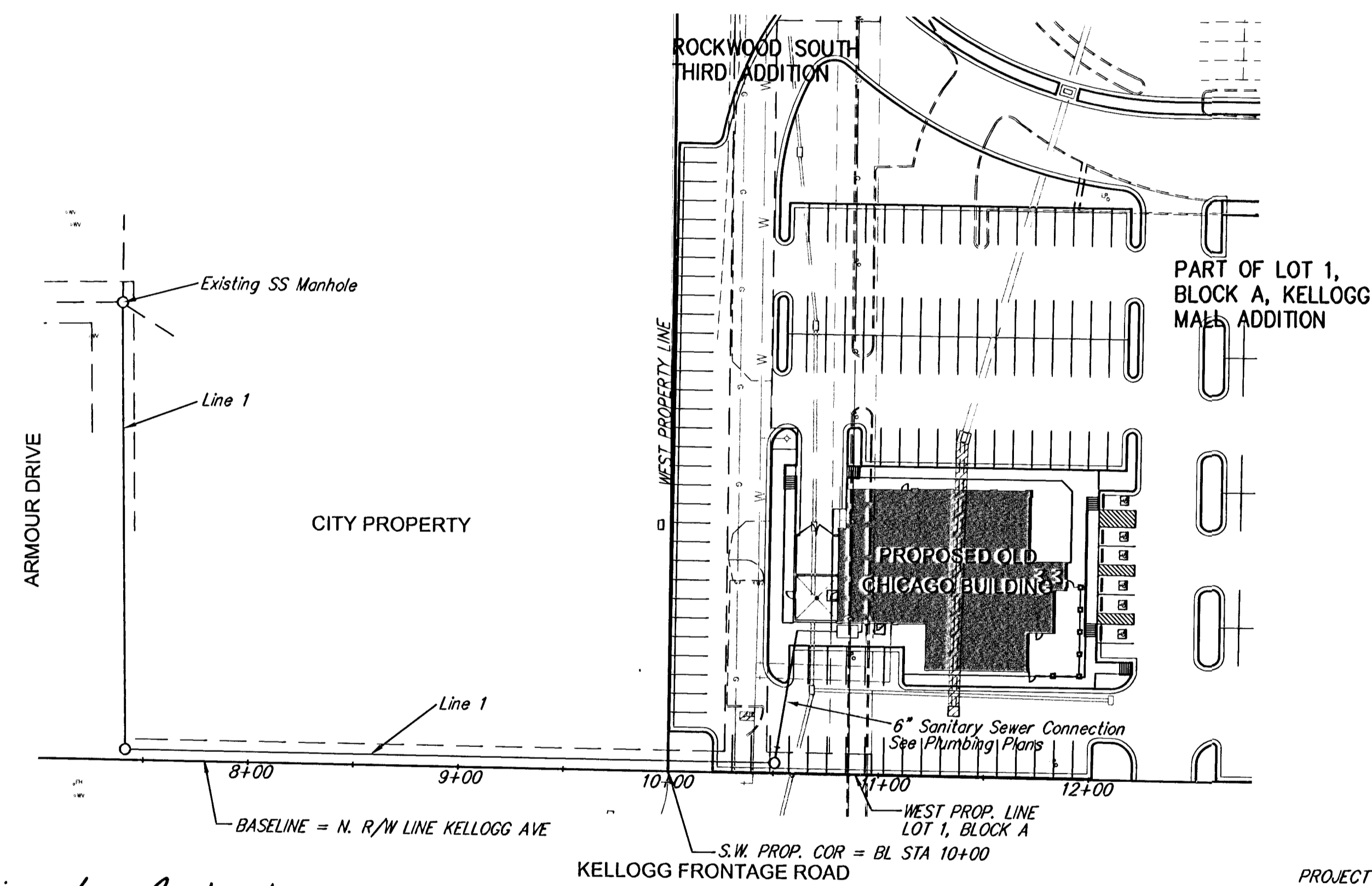
GENERAL NOTES

- Contractor will be required to provide a minimum advance notice of forty-eight (48) hours to utility companies prior to starting any excavation as follows:

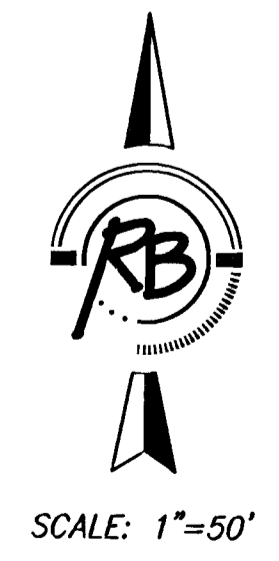
Kansas One-Call	687-2470
-----------------	----------

The Contractor must notify the following in case of an emergency:

Cox Communications	262-0661
Kansas Gas Service	383-8600
Westar	383-8600
Aquila Energy	1-800-303-0357
Southwestern Bell Telephone Company	1-800-286-8313
City of Wichita Water Department	262-6000
City of Wichita Sewer Maintenance	262-6000
- Existing utilities and their location, as shown on the plans, represent the best information obtainable for design. Location information has been obtained from the various utility companies and is either from company record drawings or company-provided field locations. The Contractor will be required to work around existing utilities within the right-of-way which do not conflict with proposed construction.
- This project is located within the limits of a larger project which will include building construction. The General Contractor for the project will submit a Storm Water Pollution Prevention Plan for the entire project prior to beginning any work on this project.
- This project is to be constructed in accordance with City of Wichita Standard Specifications for the Construction of City Projects, and Policy on Construction of Public Works Improvements by Private Contract.
- No work shall begin on this project before required bonds are submitted to the City of Wichita, and the project inspector has been notified.
- All areas of public R/W disturbed by construction of this project are to be restored in accordance with Administrative Regulation AR 78 of the City of Wichita.
- Sewage flow in the existing sanitary sewer shall be maintained at all times. The Contractor's plan for maintaining flow shall be submitted and approved by the Engineer prior to beginning work on the project.
- Traffic will not be affected by this project.
- City of Wichita specifications are to be used
- Contractor to coordinate with water service contractor to disconnect any "to be abandoned" water lines prior to sanitary sewer construction.



Mies Construction, Inc. - Contractor
 Kelly, R+B - Inspector
 Released 10/2/06
 Ag-Built
 .pdf by JDL



INDEX OF SHEETS

- TITLE SHEET
- 3. SANITARY SEWER PLAN/PROFILE
- TYPE 'P' MANHOLE DETAILS

BENCHMARKS

- COOK, FLATT & STROBEL '□' T.C. ON E. CURB LINE OF MENS WEARHOUSE 35.0 M N OF E OF N. FRONTAGE RD OF KELLOGG
- COOK, FLATT & STROBEL '□' T.C. @ THE ENE ECR OF THE ENT. BETWEEN FIRESTONE & OLD CHICAGO 36.5 M N. OF THE N. FRONTAGE RD OF KELLOGG

APPROVED AS NOTED
 BY CITY ENGINEER OF WICHITA

Sanitary Sewers VRH 4/18/06

Storm Sewers _____

Driveway Approaches _____

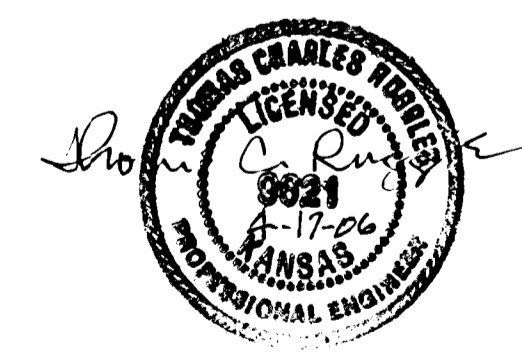
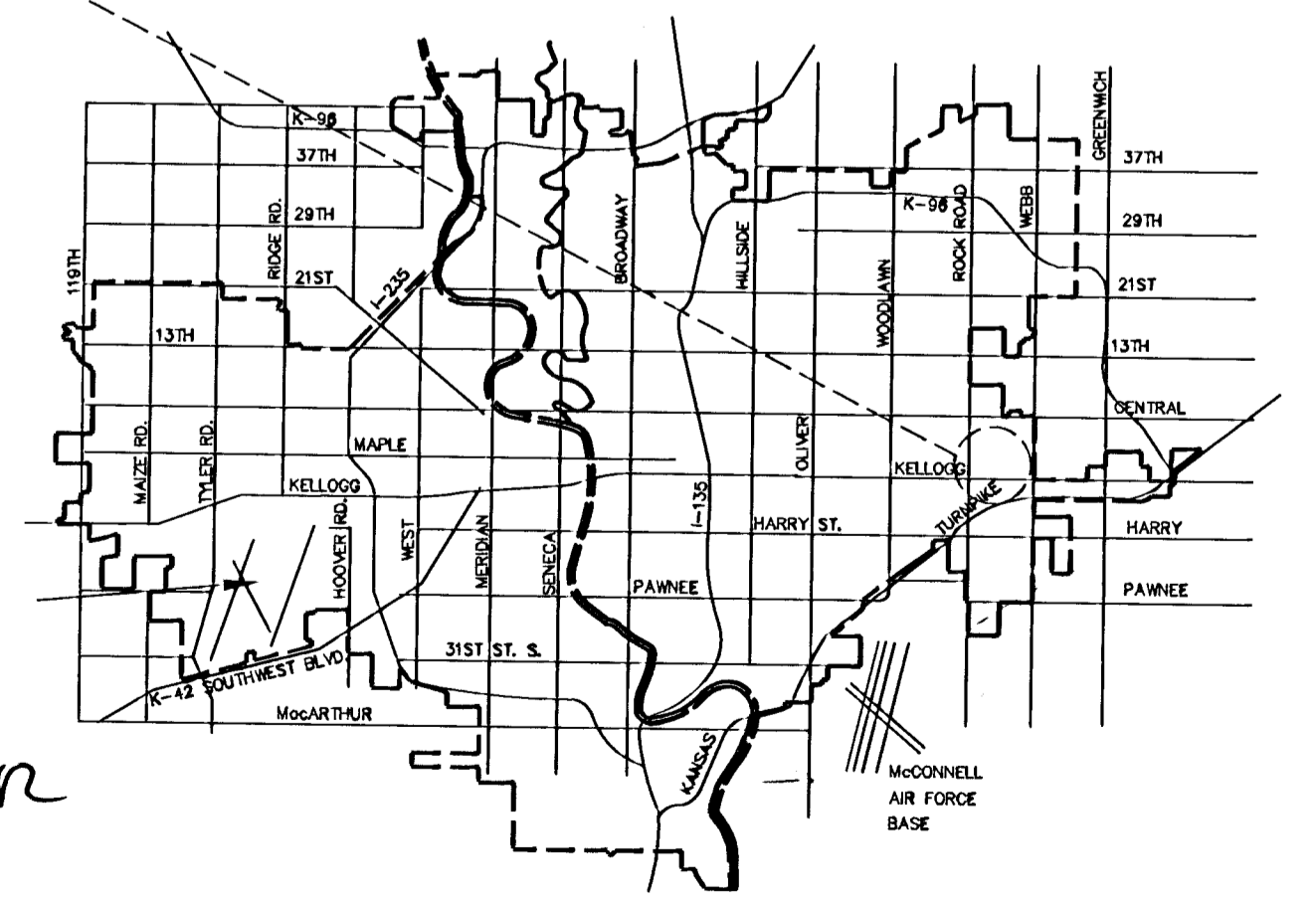
Water Mains _____

Paving _____

NOTE TO CONTRACTORS

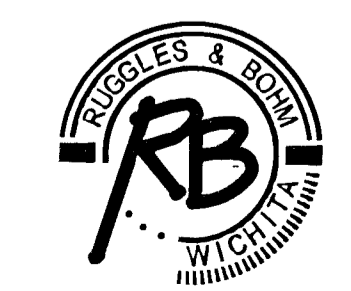
Inspection and testing for this project are to be provided by a Licensed Consulting Engineering Firm under contract with the Owner/Developer. Said inspection to be in accordance with the City of Wichita standard construction engineering practices and certified by a Licensed Professional Engineer. No work shall be performed in dedicated easements or public right-of-way by the Contractor without such inspection, nor shall any work be commenced without written authorization by the City Engineer.

PROJECT LOCATION



Rev. 36 built 9-21-06 JCR

CITY OF WICHITA, KANSAS
JAMES L. ARMOUR, P.E., CITY ENGINEER



Ruggles & Bohm, P.A.
 Engineering, Surveying, Land Planning
 924 North Main (316) 264-8008
 Wichita, Kansas 67203 (316) 264-4621 fax
 www.rbkansas.com E-mail: info@rbkansas.com