

Exist. SS MH  
N 19589.60  
E 18603.73

SW Cor. SW 1/4, NE 1/4  
Sec. 35-T275-R1W  
N 19578.53  
E 18605.89

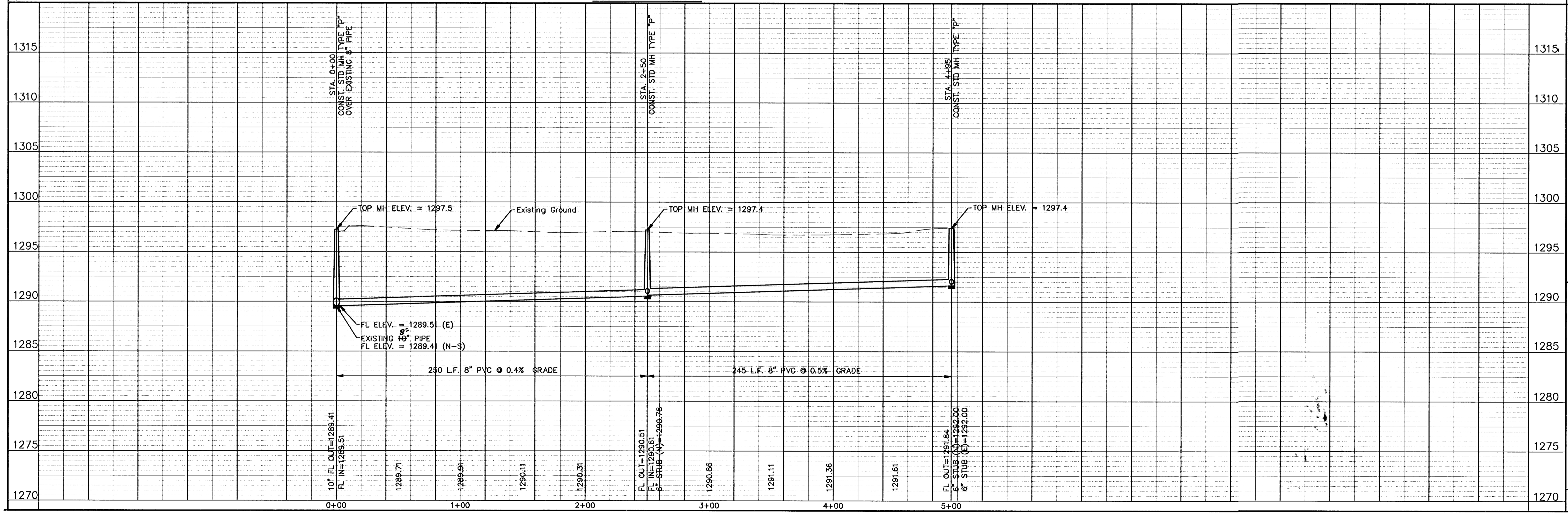
SW Corner  
Lot 1, Block 1  
May Field First Addition  
N 19579.32  
E 18640.89

Sta. 0+00 Line No. 1  
Const. STD MH Type "P"  
Over Existing 8" Pipe  
Top of MH Elev.=1297.5  
FL Elev. (N-S)=1289.41  
FL Elev. (E)=1289.51  
Contractor to verify  
location of and depth of  
existing SS main  
prior to construction.  
N 19628.60  
E 18608.04

Sta. 2+50  
Const. Std. MH Type "P"  
Top of MH Elev.=1297.4  
FL Elev. (E)=1290.61  
FL Elev. (W)=1290.51  
6" Stub (N)  
6" Stub (E)  
N 19634.26  
E 18847.82

Sta. 4+95  
Const. Std. MH Type "P"  
Top of MH Elev.=1297.4  
FL Elev. (E)=1391.84  
6" Stub (N)  
6" Stub (E)  
N 19640.0531  
E 19102.9147

**LINE NO. 1**



STA. 0+00  
CONST. STD MH TYPE "P"  
OVER EXISTING 8" PIPE

STA. 2+50  
CONST. STD MH TYPE "P"

STA. 4+95  
CONST. STD MH TYPE "P"

TOP MH ELEV. = 1297.5

Existing Ground

FL ELEV. = 1289.51 (E)  
EXISTING 8" PIPE  
FL ELEV. = 1289.41 (N-S)

TOP MH ELEV. = 1297.4

TOP MH ELEV. = 1297.4

250 L.F. 8" PVC @ 0.4% GRADE

245 L.F. 8" PVC @ 0.5% GRADE

10" FL OUT=1289.41  
FL IN=1289.51

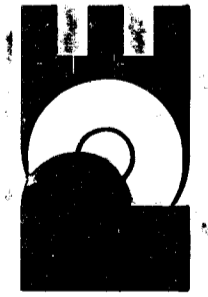
FL OUT=1290.51  
FL IN=1290.61  
6" STUB (N)=1290.78

FL OUT=1291.84  
6" STUB (N)=1292.00  
6" STUB (E)=1292.00

No.	Date	By	Approved	Revision

MAY FIELD FIRST ADDITION  
SANITARY SEWER IMPROVEMENTS  
SEWERLINE NO. 1  
CITY OF WICHITA, KANSAS  
JAMES ARMOUR, P.E. - CITY ENGINEER  
1677 PPS (607861)

POE & ASSOCIATES, INC.  
CONSULTING ENGINEERS  
5940 E. Central, Suite 200 ■ Wichita, KS 67208-4242  
Phone 316/685-4114 ■ FAX 316/685-4444



**FINAL**

Designed By: T. Austin/S. Schmidt  
Drawn By: M. Myers  
Poe Job No.: 815\poe-ss.dwg  
Date: June 2006