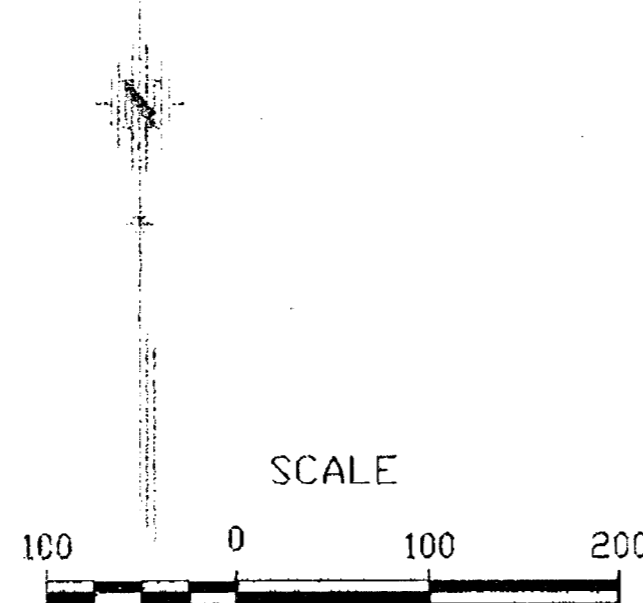


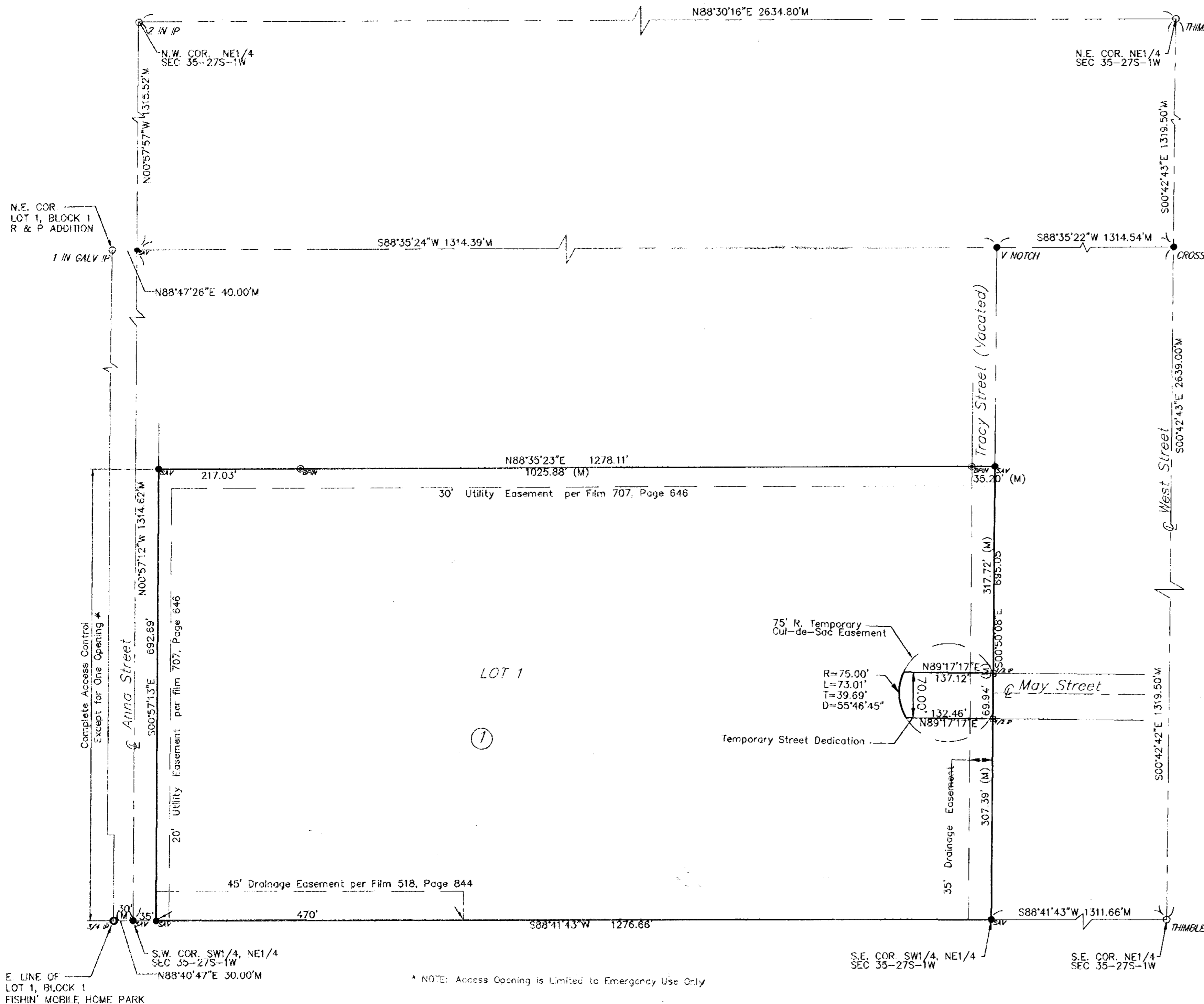
MAY FIELD FIRST ADDITION WICHITA, SEDGWICK COUNTY, KANSAS

LEGEND

- (C) = Calculated
- (M) = Measured
- (P) = Platted
- (R) = Record
- C.A.C. = Complete Access Control
- R.O.W. = Right-of-Way
- = BPIN (found)
- = 1/2" Iron Pipe (found)
- = 3/4" Iron Pipe (found)
- _{SAV} = 1/2" Rebar w/SAVCOY CAP (set)
- THIMBLE ○ = City of Wichita Control Thimble(Found)
- 1 IN GALV IP ○ = 1" Galvanized Iron Pipe(Found)
- 2 IN IP ○ = 2" Iron Pipe(Found)
- CROSS ● = Cross Chiseled in Concrete(Set)
- ✓ NOTCH ● = V-notch Chiseled in Concrete(Set)



BENCHMARK
City of Wichita Std. Disc
West side of Anna and south line of drive into trailer park.
125' S. of West 1/4 corner.
Elevation = 1297.5 NGVD



* NOTE: Access Opening is Limited to Emergency Use Only

State of Kansas) ss
Sedgwick County)

I, the undersigned licensed land surveyor in aforesaid county and state, do hereby certify that, under the supervision of the undersigned, we, Savoy Company, P.A. have surveyed and platted "MAY FIELD FIRST ADDITION", Wichita, Sedgwick County, Kansas and that the accompanying plat is a true and correct exhibit of the property surveyed, described as follows:

The SW1/4 of the NE1/4 of Sec. 35, Twp. 27-S, R-1-W of the 6th P.M., Sedgwick County, Kansas, except the north 622 feet thereof, and except the west 35 feet thereof.

Existing public dedications, rights of way, and easements being vacated by virtue of K.S.A. 12-512(b).

State of Kansas) ss
Sedgwick County)

Know all men by these presents that we, the undersigned, have caused the land described in the surveyor's certificate to be platted into a Lot and a Block, to be known as "MAY FIELD FIRST ADDITION", Wichita, Sedgwick County, Kansas.

A drainage plan has been developed for the plat. All drainage easements and/or rights of way shall remain at established grades, or as modified with the approval of the applicable public agency, and unobstructed to allow for the conveyance of stormwater. Easements for utilities and drainage as shown are for the public's benefit. Access controls shown are hereby granted to governing body. The temporary cul-de-sac easement is granted until such time as May Street is extended through dedication by separate instrument.

C & C Development, L.L.C.
By: _____
Name: _____
Title: _____

State of Kansas) ss
Sedgwick County)

BE IT REMEMBERED that on this 17th day of February, 2005, before me, the undersigned, a notary public in and for the County and State aforesaid came Craig Munk, CEO of C & C Development, L.L.C. to me personally known to be the same person who executed this instrument and such person duly acknowledged the execution of the same.

IN WITNESS WHEREOF, I have hereunto set my hand and affixed my official seal the day and year first above written.

Oct. 11, 2005
My appointment expires _____
Notary Public
Tracy R. Avesha

We, Pioneer Bank & Trust, by L.D. Carney, Branch Manager, holders of a mortgage on the above described property do hereby consent to the plat of "May Field First Addition", Wichita, Sedgwick County, Kansas

Pioneer Bank & Trust
L.D. Carney, Branch Manager

State of Kansas) ss
Sedgwick County)

BE IT REMEMBERED that on this 17th day of February, 2005, before me, the undersigned, a notary public in and for the County and State aforesaid came L.D. Carney, Branch Manager, Pioneer Bank & Trust, to me personally known to be the same person who executed this instrument and such person duly acknowledged the execution of the same.

IN WITNESS WHEREOF, I have hereunto set my hand and affixed my official seal the day and year first above written.

Nancy K. Harp
Notary Public
My appointment expires _____

Notary Public Seal: Nancy K. Harp, Notary Public, State of Kansas, My Comm. Expires 12/31/05

Notary Seal: Tracy R. Avesha, Notary Public, State of Kansas, My Comm. Expires 10/11/05

Doc #/FLM-PG: 28763859
Date Recorded: 3/15/2006 9:02:12 AM

State of Kansas) ss
Sedgwick County)

This plat of "MAY FIELD FIRST ADDITION", Wichita, Sedgwick County, Kansas has been submitted to and approved by the Wichita/Sedgwick County Metropolitan Area Planning Commission, Wichita, Kansas.

Dated this 9th day of December, 2005.
Wichita/Sedgwick County Metropolitan Area Planning Commission.

Morris K. Dunlop, Chair
John L. Schefel, Secretary



State of Kansas) ss
City of Wichita)

This plat approved and all dedications shown hereon accepted by the City Council of the City of Wichita, Kansas, this 8th day of March, 2006. At the Direction of the City Council.

Carlos Mayans, Mayor
Karen Sublett, Civic, City Clerk
Entered on transfer record this 14th day of March, 2006.
Don Brace, County Clerk



State of Kansas) ss
Sedgwick County)

This is to certify that this instrument was filed for record in the Register of Deeds office at 9:00'clock A.M., on the 15th day of March, 2006, and is duly recorded.

Bill Meek, Register of Deeds
Donna Buckingham, Deputy

State of Kansas) ss
Sedgwick County)

Reviewed in accordance with K.S.A. 58-2005 on this 1st day of February, 2005.

Tricia L. Robello, E.S. # 1246
Deputy County Surveyor
Sedgwick County, Kansas

SURVEYED BY:
Savoy Company, P.A.
Land Surveyors
333 S. Emporia, Suite 104, Wichita, KS 67202
PH (316) 265-0005
FAX (316) 265-0275
www.savoyco.com



POE & ASSOCIATES, INC.
CONSULTING ENGINEERS
6940 E. Central, Suite 200 Wichita, KS 67218-4242
Phone 316-825-4114 FAX 316-855-4444

