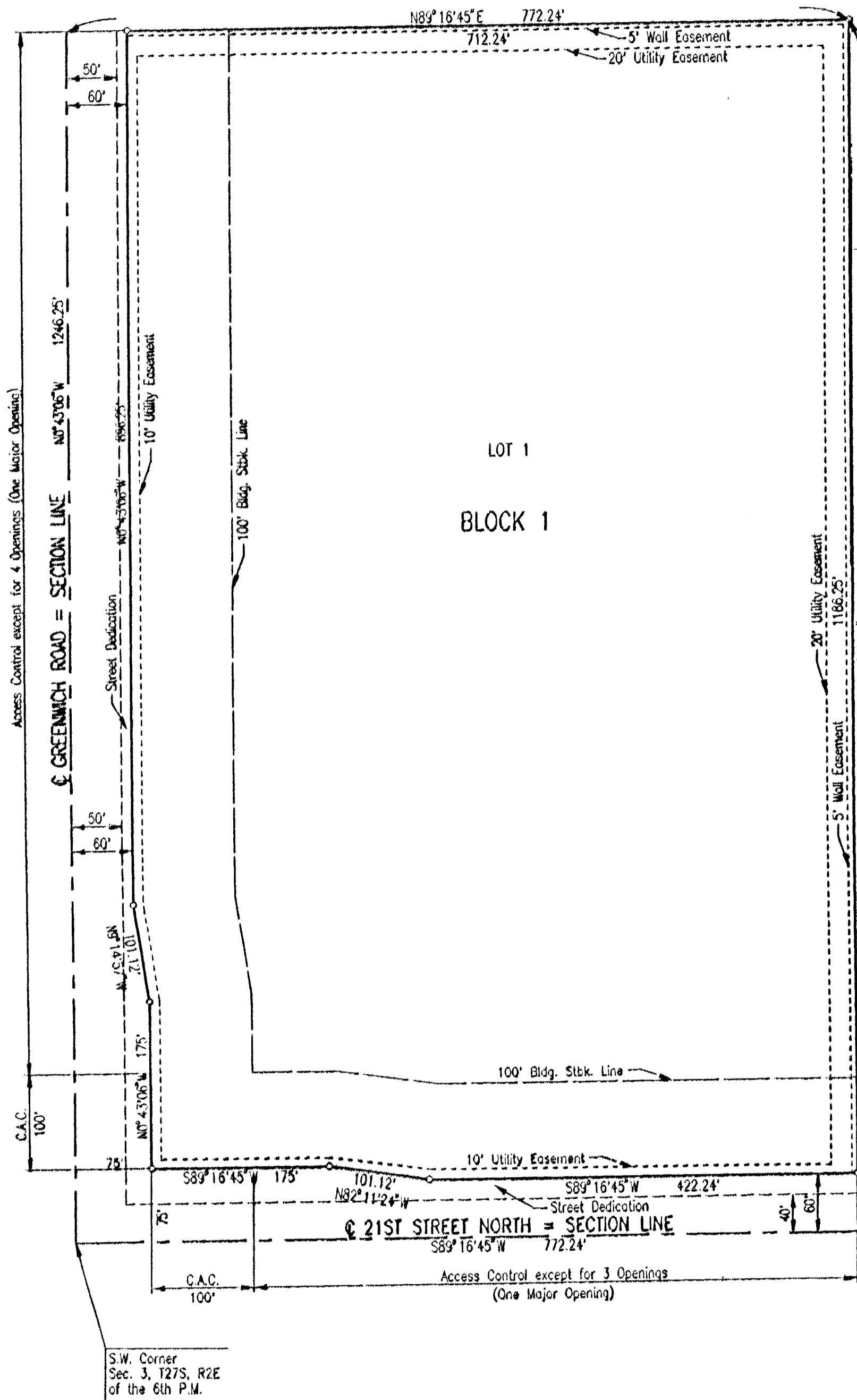


THE MANHATTAN ADDITION  
TO SEDGWICK COUNTY, KANSAS



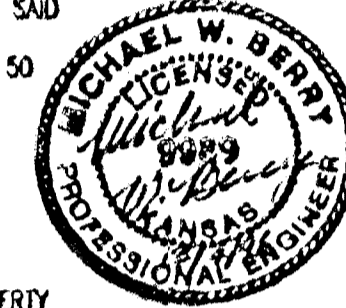
SCALE: 1"=100'  
 o = IRON SET  
 C.A.C. = COMPLETE ACCESS CONTROL  
 B.M. - CITY OF WICHITA DISC, 41 FEET SOUTH AND 58 FEET WEST OF IRON AT CENTERLINE OF GREENWICH AND 21ST ST. N. ELEV. 1733.98 CITY DATUM ELEV. 1361.38 M.S.L.  
 SEE AGREEMENT FILED BY SEPARATE INSTRUMENT FOR TERMS, RESTRICTIONS, AND CONDITIONS ESTABLISHED FOR THE DEVELOPMENT OF THIS PROPERTY.

STATE OF KANSAS )  
 COUNTY OF SEDGWICK ) SS

I, MICHAEL W. BERRY, A REGISTERED LAND SURVEYOR IN AFORESAID STATE AND COUNTY, DO HEREBY CERTIFY THAT ON THIS 4th DAY OF December, 1998, I HAVE CAUSED TO BE SURVEYED AND PLATTED THE MANHATTAN ADDITION TO SEDGWICK COUNTY, KANSAS, INTO A LOT, A BLOCK, AND STREETS THE SAME TO BE DESCRIBED AS:

A TRACT IN THE SOUTHWEST QUARTER OF THE SOUTHWEST QUARTER OF SECTION 3, TOWNSHIP 27 SOUTH, RANGE 2 EAST OF THE SIXTH PRINCIPAL MERIDIAN, SEDGWICK COUNTY, KANSAS, DESCRIBED AS BEGINNING AT THE SOUTHWEST CORNER OF SAID SECTION; THENCE NORTH ALONG THE WEST LINE OF SAID SECTION, 1246.25 FEET; THENCE EAST PARALLEL TO THE SOUTH LINE OF SAID SECTION, 772.24 FEET; THENCE SOUTH PARALLEL TO THE WEST LINE OF SAID SECTION, 1246.25 FEET; THENCE WEST ALONG THE SOUTH LINE OF SAID SECTION, 772.24 FEET TO THE POINT OF BEGINNING, EXCEPT THE WEST 50 FEET AND THE SOUTH 40 FEET THEREOF.

Michael W. Berry  
 MICHAEL W. BERRY, R.L.S. NO. 948  
 PROFESSIONAL ENGINEERING CONSULTANTS, P.A.



KNOW ALL MEN BY THESE PRESENTS THAT WE, THE UNDERSIGNED PROPERTY OWNERS OF THE LAND AS ABOVE SET FORTH IN THE SURVEYOR'S CERTIFICATE, HAVE CAUSED THE LAND TO BE SURVEYED AND PLATTED INTO A LOT, A BLOCK, AND STREETS, THE SAME TO BE KNOWN AS THE MANHATTAN ADDITION TO SEDGWICK COUNTY, KANSAS. EASEMENTS, AS INDICATED FOR THE CONSTRUCTION AND MAINTENANCE OF PUBLIC UTILITIES, ARE HEREBY GRANTED. THE STREETS ARE HEREBY DEDICATED TO AND FOR THE USE OF THE PUBLIC.

THE 5-FOOT WALL EASEMENT ALONG THE NORTH AND EAST LINES OF BLOCK 1 IS HEREBY PLATTED FOR THE CONSTRUCTION AND MAINTENANCE OF A PRIVATE UTILITY. UTILITIES MAY CROSS THE WALL EASEMENT.

ALL ADJUTERS' RIGHT OF ACCESS TO AND FROM 21ST STREET NORTH AND GREENWICH ROAD OVER AND ACROSS THE SOUTH AND WEST SIDE OF LOT 1, BLOCK 1, ARE HEREBY GRANTED TO THE APPROPRIATE GOVERNING BODY; PROVIDED HOWEVER THAT LOT 1 SHALL HAVE ACCESS TO THE 21ST STREET NORTH AT (3) THREE LOCATIONS AND GREENWICH ROAD AT (4) FOUR LOCATIONS AS SHOWN, SAID LOCATIONS TO BE DESIGNATED BY THE APPROPRIATE ENGINEER.

SEE AGREEMENT FILED BY SEPARATE INSTRUMENT FOR TERMS, RESTRICTIONS, AND CONDITIONS ESTABLISHED FOR THE DEVELOPMENT OF THIS PROPERTY.

OWNERS:  
 LUXURY DEVELOPMENT PARTNERS, INC.

BY: William J. Warren  
 WILLIAM J. WARREN, PRESIDENT

STATE OF KANSAS )  
 COUNTY OF SEDGWICK ) SS

THIS INSTRUMENT WAS ACKNOWLEDGED BEFORE ME THIS 4th DAY OF December, 1998, BY WILLIAM J. WARREN, PRESIDENT OF LUXURY DEVELOPMENT PARTNERS, INC.

Gary L. Wiley, NOTARY PUBLIC  
 GARY L. WILEY  
 MY COMMISSION EXPIRES Jan 15, 1999



WE, INTRUST BANK, N.A., WICHITA, KANSAS, HOLDER OF A MORTGAGE ON THE ABOVE DESCRIBED PROPERTY, DO HEREBY CONSENT TO THE PLATTING OF THE MANHATTAN ADDITION TO SEDGWICK COUNTY, KANSAS.

BY: Bruce A. Long  
 BRUCE A. LONG, VICE PRESIDENT

STATE OF KANSAS )  
 COUNTY OF SEDGWICK ) SS

THIS INSTRUMENT WAS ACKNOWLEDGED BEFORE ME THIS 11th DAY OF December, 1998, BY BRUCE A. LONG, VICE PRESIDENT OF INTRUST BANK, N.A., WICHITA, KANSAS.

Gary L. Wiley, NOTARY PUBLIC  
 GARY L. WILEY  
 MY COMMISSION EXPIRES Jan 15, 1999



THIS PLAT HAS BEEN SUBMITTED TO AND APPROVED BY THE WICHITA-SEDGWICK COUNTY METROPOLITAN AREA PLANNING COMMISSION, WICHITA, KANSAS. DATED THIS 15th DAY OF FEBRUARY, 1998.

Susan Osborne-Howes, CHAIRMAN  
 SUSAN OSBORNE-HOWES  
Marvin S. Krout, SECRETARY  
 MARVIN S. KROUT



THIS PLAT APPROVED ALL DEDICATIONS SHOWN HEREON ARE ACCEPTED BY THE CITY COUNCIL OF THE CITY OF WICHITA, KANSAS. DATED THIS 7th DAY OF JANUARY, 1997.

Bob Knight, MAYOR  
 BOB KNIGHT  
Pat Burnett, CITY CLERK  
 PAT BURNETT



THIS PLAT APPROVED AND ALL DEDICATIONS SHOWN HEREON ARE ACCEPTED BY THE BOARD OF COUNTY COMMISSIONERS OF SEDGWICK COUNTY, KANSAS. THIS 20th DAY OF Feb, 1997.

Thomas G. Winters, CHAIRMAN  
 THOMAS G. WINTERS  
Paul W. Hancock, CHAIR PRO-TEM  
 PAUL W. HANCOCK

Betsy Gwin, COMMISSIONER  
 BETSY GWIN

Melody Miller, COMMISSIONER  
 MELODY MILLER

Mark F. Schiroeder, COMMISSIONER  
 MARK F. SCHIROEDER

James Alford, COUNTY CLERK  
 JAMES ALFORD

ENTERED ON TRANSFER RECORD THIS 21 DAY OF February, 1997.

James Alford, COUNTY CLERK  
 JAMES ALFORD

THIS IS TO CERTIFY THAT THIS INSTRUMENT WAS FILED FOR RECORD IN THE REGISTER OF DEEDS OFFICE AT WICHITA, ON THIS 21 DAY OF FEBRUARY, 1997.

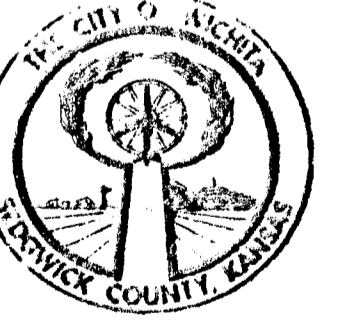
Larry L. Gansolver, REGISTER OF DEEDS  
 LARRY L. GANSOLVER

Michael D. Hurtt, DEPUTY  
 MICHAEL D. HURTT



CONSENT IS HEREBY GIVEN FOR THE FORMATION OF BENEFIT DISTRICTS WITHIN THE BOUNDARY OF THIS PLAT BY THE BOARD OF COUNTY COMMISSIONERS AS THEY DEEM NECESSARY TO MAKE STREET IMPROVEMENTS TO SERVE THIS AREA, THIS 14th DAY OF JANUARY, 1997.

Bob Knight, MAYOR  
 BOB KNIGHT  
Pat Burnett, CITY CLERK  
 PAT BURNETT



20.00  
 CR

18 01 50 41