

BENCHMARK:
CITY OF WCHITA DISC - MAIZE RD. &
STERLING, (2400 BLOCK N.), TOP OF
CURB, WEST END OF MEDIAN ON C OF
STERLING.
61' E. OF C OF MAIZE RD.
ELEV. = 1353.57 NGVD29

SMALL RAILROAD SPIKE IN E. FACE
OF POWER POLE, 34.6' S. & 6.9' W.
OF THE NW COR. OF LOT 2, BLOCK A.
ELEV. = 1351.99 NGVD29

Scale: 1" = 40' Horizontal
1" = 5' Vertical
• = Iron

Manhole Adjustment
Exist. elev.=1353.20. Lower to NEW
Elev.=1352.20

Sta. 0+00 to Sta. 2+07.2, Line 1
Sanitary Sewer trench shall be
sand backfilled and flushed.

Sta 0+00.0, Begin Line 1
Construct new manhole over existing
sanitary sewer line. Extend 8" pipe
northwest. Cut out, seal and grout
around pipe. Cost of coring, sealing,
grouting, reshaping, etc. to be
incidental to cost of pipe.
Top = 1352.65

CAUTION!
Ex. Telephone
Line Crossing

CAUTION!
Ex. Undgd. Elec.
Line Crossing

Sta 2+07.2, End Line 1
Construct std. manhole.
1 - 6" Stub (NW)
Rim Elev. = 1353.40

Sta. 0+00 to Sta. 2+07.2, Line 1
Sanitary Sewer trench shall be
sand backfilled and flushed.

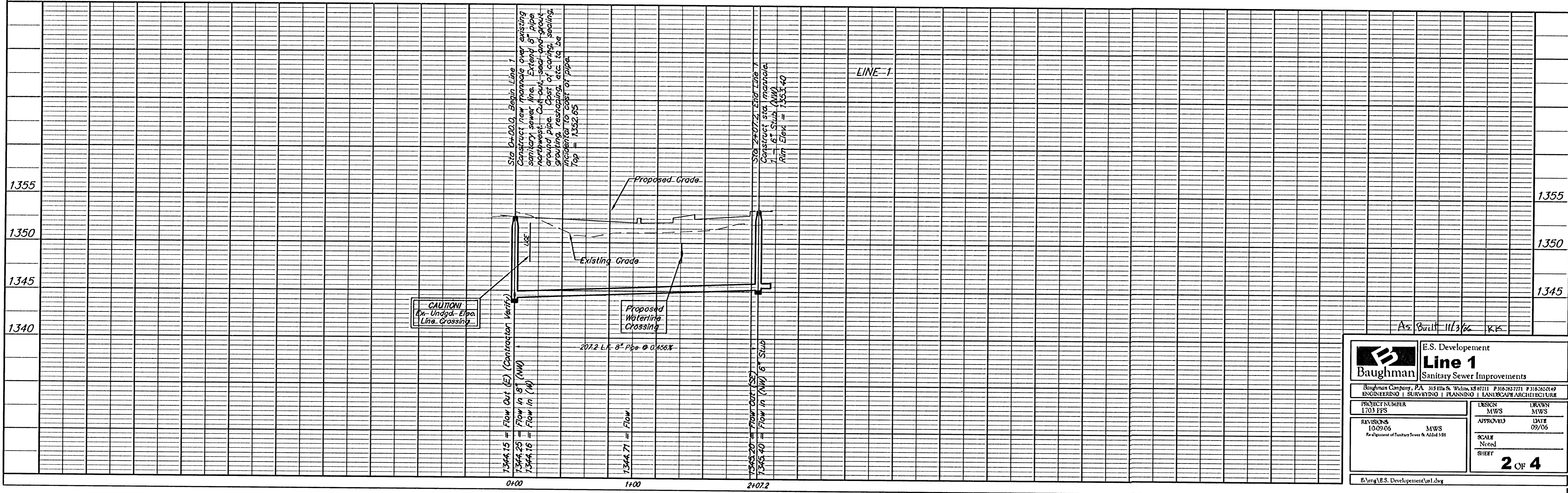
Existing Utilities on site should be
disconnected prior to start of
Construction. Contractor to verify and
coordinate with General Contractor.

Contractor to remove trees, fence, signs,
poles, etc. as needed for sanitary sewer
construction. Removal of items shall be
incidental to "Site Clearing and Restoration".

Sta. 0+00.0, Begin Line 1
Construct new manhole over existing
sanitary sewer line. Extend 8" pipe
northwest. Cut out, seal and grout
around pipe. Cost of coring, sealing,
grouting, reshaping, etc. to be
incidental to cost of pipe.
Top = 1352.65

Sta. 2+07.2, End Line 1
Construct std. manhole
1 - 6" Stub (NW)
Rim Elev. = 1353.40

LINE 1



		E.S. Development Line 1 Sanitary Sewer Improvements	
Baughman Company, P.A. 315 Ellis St. Wichita, KS 67211 P 316-262-7271 F 316-262-0149 ENGINEERING SURVEYING PLANNING LANDSCAPE ARCHITECTURE			
PROJECT NUMBER 1703 PFS	DESIGN MWS	DRAWN MWS	
REVISIONS 10-09-06	APPROVED MWS	DATE 09/06	
Re-Department of Sanitary Sewer & Solid 5.91		SCALE Noted	
		SHEET	2 OF 4
E:\eng\ES_Development\ss1.dwg			