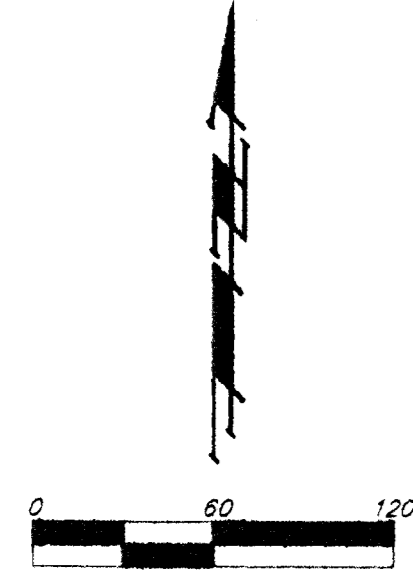


THUNDERBIRD OFFICE PARK

AN ADDITION TO WICHITA, SEDGWICK COUNTY, KANSAS

COORDINATE LIST		
POINT	NORTH	EAST
100	9,307.4857	9,950.0168
101	9,307.4958	9,902.8778
102	9,323.1919	9,855.6302
103	9,380.7680	9,792.6659
104	9,438.4984	9,750.7959
105	9,548.5726	9,729.8841
106	9,548.5724	9,950.0797

100 = COORDINATE POINT NO.



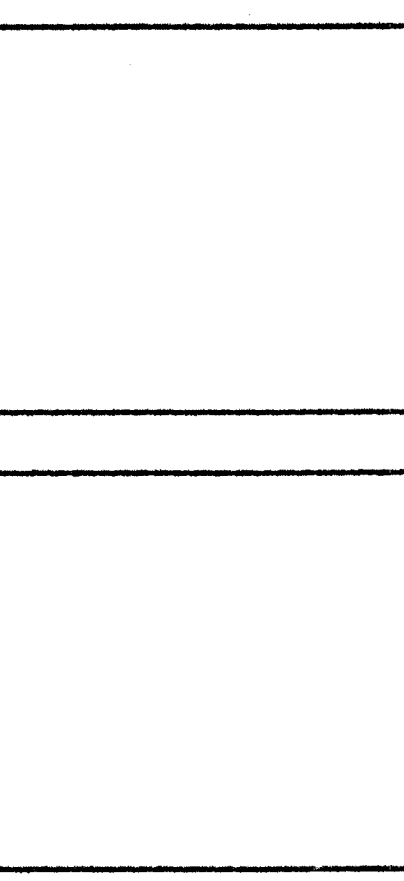
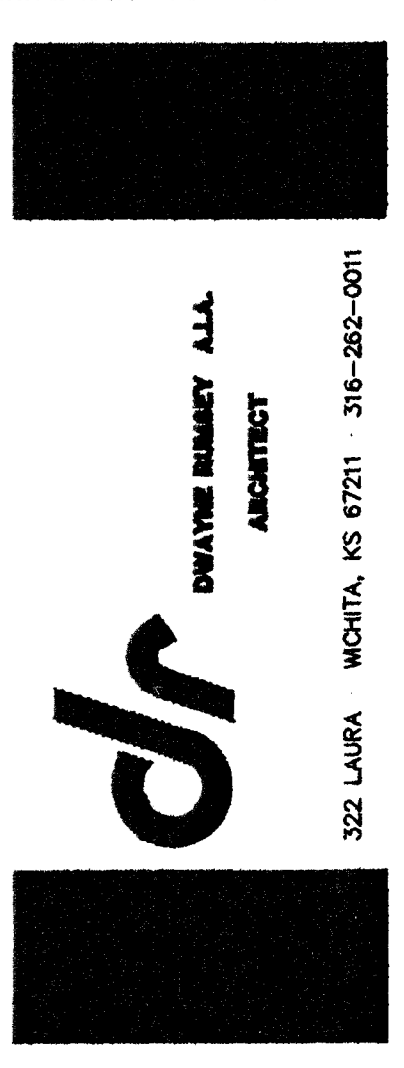
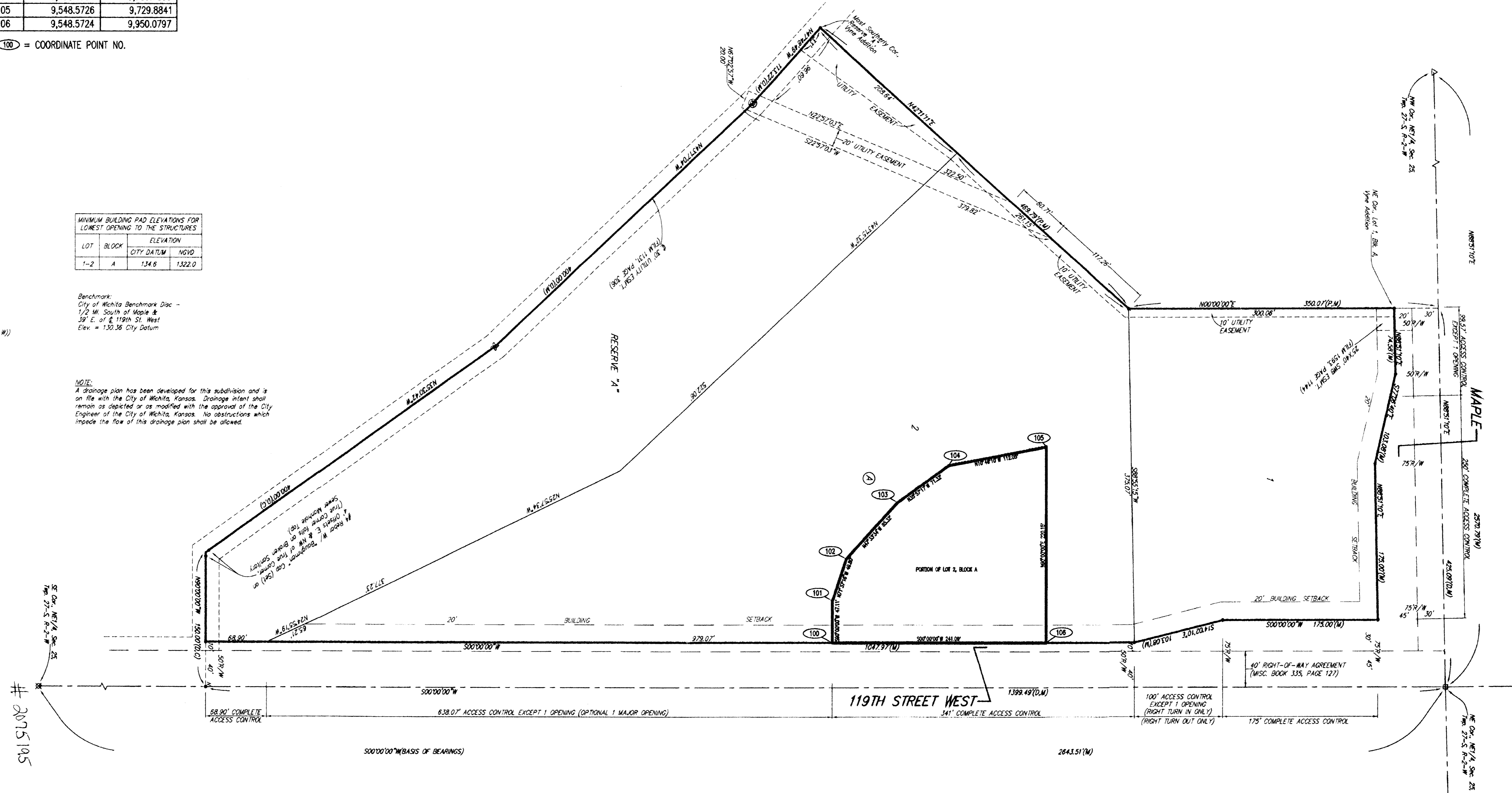
MINIMUM BUILDING PAD ELEVATIONS FOR LOWEST OPENING TO THE STRUCTURES			
LOT	BLOCK	ELEVATION	
		CITY DATUM	NGVD
1-2	A	134.6	1322.0

- ⊕ = #4 Rebar w/ "Daughman" Cap (Found)
- ⊖ = #4 Rebar w/ "Daughman" Cap (Set)
- ⊗ = #4 Rebar (Found)
- = 1/2" Iron in Conc. in 6x6 Steel Box (Found)
- △ = 1/2" Iron (Found)
- ⊙ = "X" on Sanitary Sewer Manhole Lid (Set)
- ⊙ = "X" on Sanitary Sewer Manhole Lid (Found)
- ⊙ = "X" on Concrete Sanitary Sewer Manhole Tail Cap (Set)
- ⊙ = "X" on Concrete Sanitary Sewer Manhole Tail Cap (Found)
- ⊙ = "2"-K" Not (Set)

Benchmark:
City of Wichita Benchmark Disc -
1/2 M. South of Maple &
39' E. of 119th St. West
Elev = 130.36 City Datum

NOTE:
A drainage plan has been developed for this subdivision and is on file with the City of Wichita, Kansas. Drainage intent shall remain as depicted or as modified with the approval of the City Engineer of the City of Wichita, Kansas. No obstructions which impede the flow of this drainage plan shall be allowed.

- (M) = Measured
- (D) = Described
- (P) = Plotted
- (C) = Calculated



A NEW BRANCH BANK
INTRUST BANK
WESTLAKE CENTER
405 S. 119th STREET
WICHITA, KANSAS

date: NOV. 20, 2006
project: 2410
C-2.3
OF SEVENTEEN

No.	Revision	By	Date
CITY OF WICHITA, KANSAS JAMES L. ARMOUR, P.E. - ACTING CITY ENGINEER INTRUST BANK - WESTLAKE CENTER PLAT PRIVATE PROJECT NO. PPS (807881)			
Designed by	DWH	Job No.	35-06601-111
Drawn by	JAN	Date	NOV. 2006