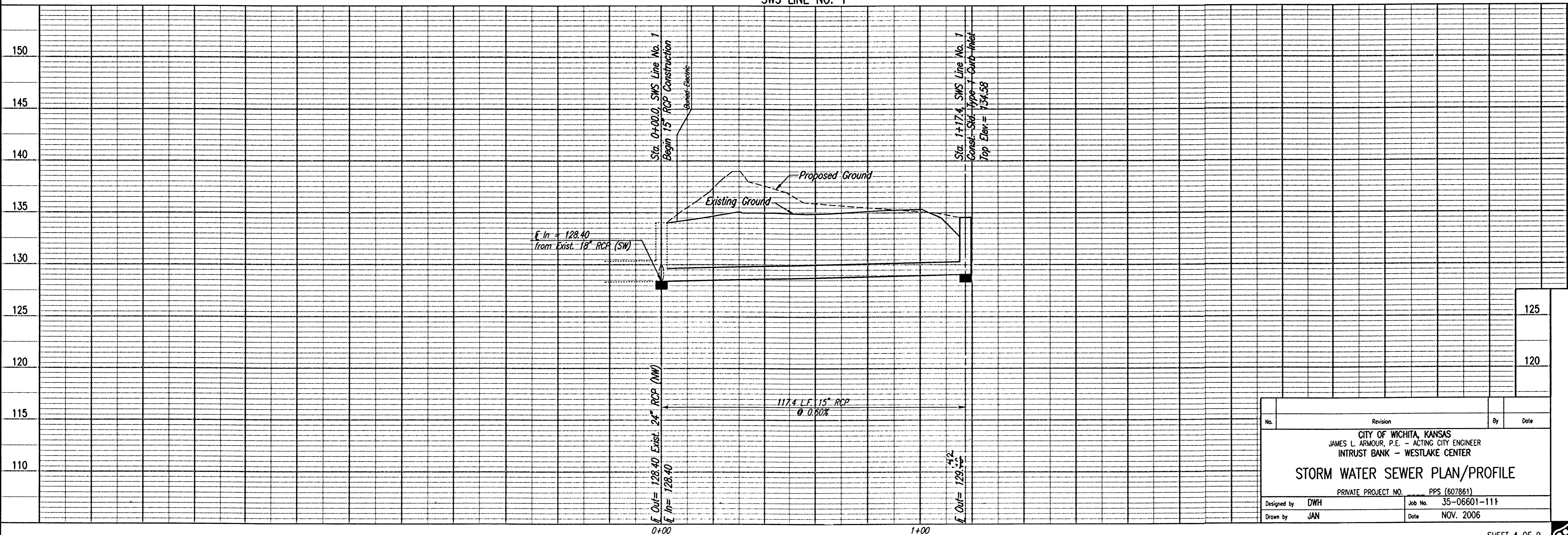


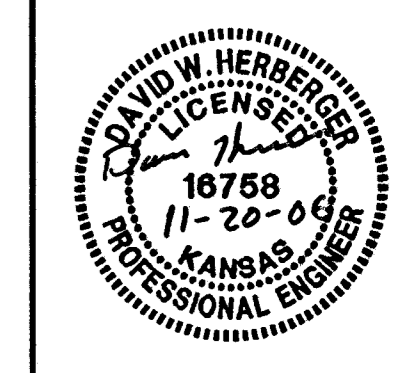
SWS LINE NO. 1



Saved 11-21-2006 2:22:32 PM by JAH
 File: 35-06601-111.dwg
 Plot: 35-06601-111.dwg
 Plot Date: 11/21/2006 2:22:32 PM
 Plot Scale: 1.0000
 Plot Units: Feet

No.	Revision	By	Date

CITY OF WICHITA, KANSAS
 JAMES L. ARMOUR, P.E. - ACTING CITY ENGINEER
 INTRUST BANK - WESTLAKE CENTER
STORM WATER SEWER PLAN/PROFILE
 PRIVATE PROJECT NO. PPS (607861)
 Designed by: DWH Job No. 35-06601-111
 Drawn by: JAN Date: NOV. 2006



A NEW BRANCH BANK
INTRUST BANK
 WESTLAKE CENTER
 405 S. 119th STREET
 WICHITA, KANSAS

date: NOV. 20, 2006
 project: 2410

C-2.4
 SEVENTEEN

