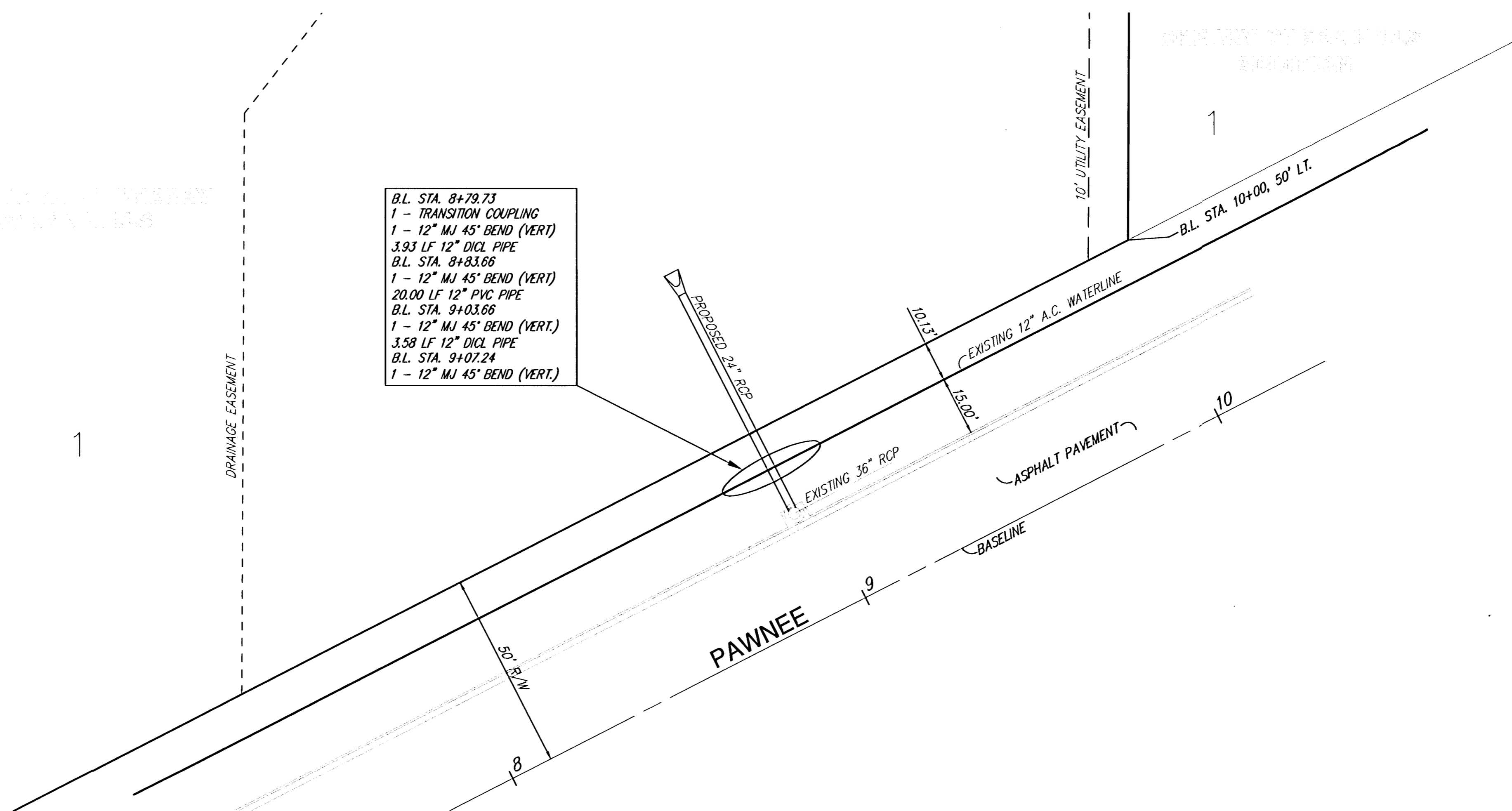
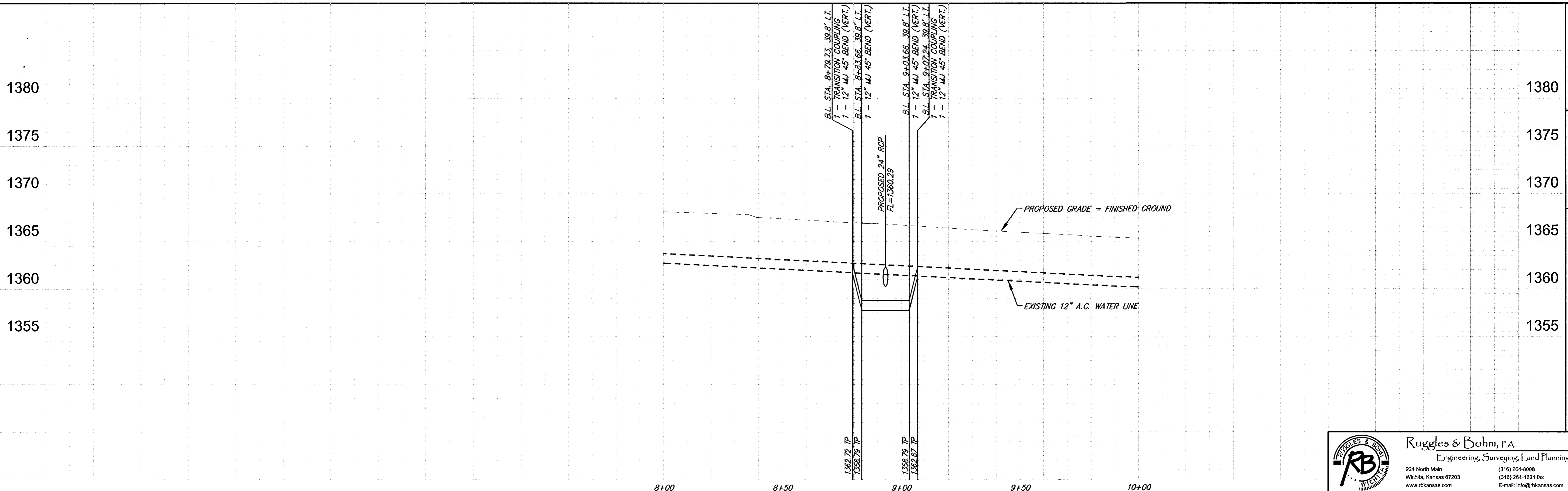




SCALE: Horz. 1" = 20'
Vert. 1" = 5'



B.L. STA. 8+79.73
1 - TRANSITION COUPLING
1 - 12" MJ 45° BEND (VERT.)
3.93 LF 12" DI CL. PIPE
B.L. STA. 8+83.66
1 - 12" MJ 45° BEND (VERT.)
20.00 LF 12" PVC PIPE
B.L. STA. 9+03.66
1 - 12" MJ 45° BEND (VERT.)
3.58 LF 12" DI CL. PIPE
B.L. STA. 9+07.24
1 - 12" MJ 45° BEND (VERT.)



REVISION	NOV. 8, 2004
DRAWN	AML
DESIGN	AML
PROJECT NUMBER	448-90026
DRAWING FILE	ENGG BASE WATER P-P
12" Water Main Relocation THE PLAZA AT CHERRY CREEK HILLS WICHITA, KANSAS	

Ruggles & Bohm, P.A.
Engineering, Surveying, Land Planning
924 North Main
Wichita, Kansas 67203
www.rbkansas.com
(316) 264-8008
(316) 264-4621 fax
E-mail: info@rbkansas.com