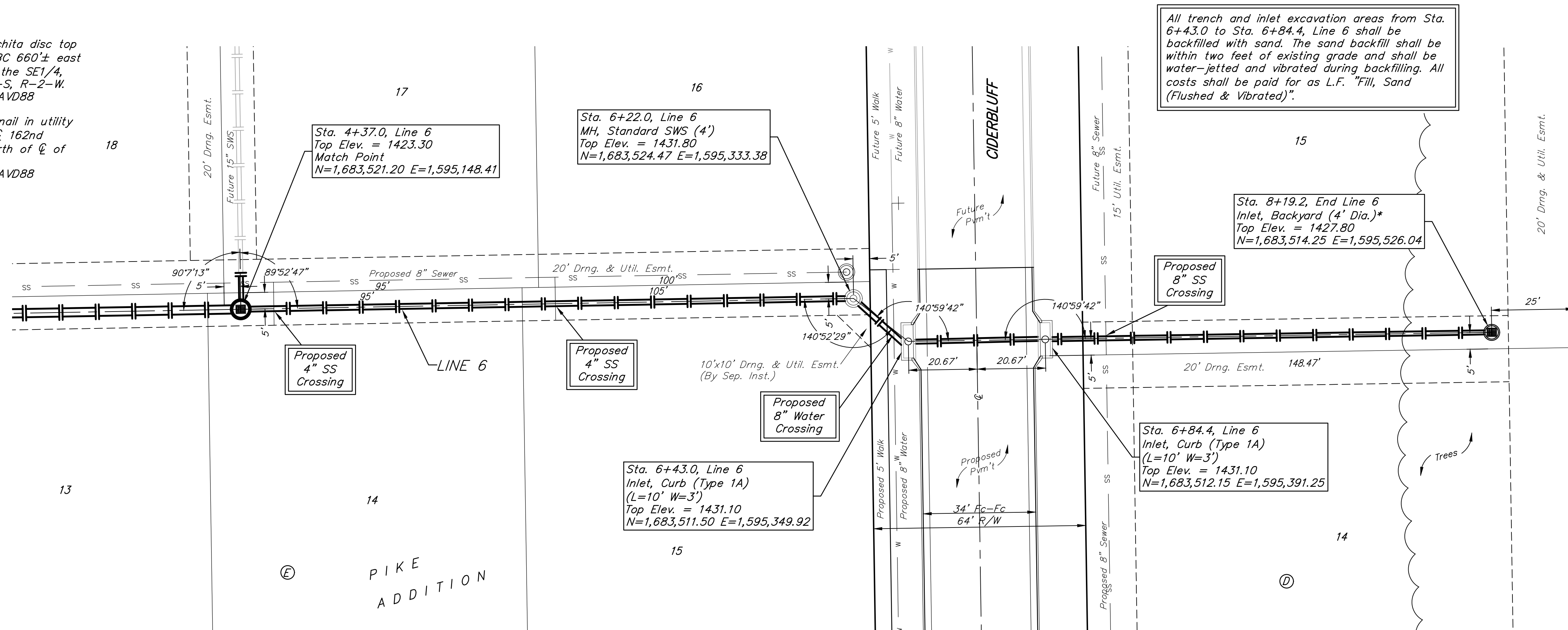
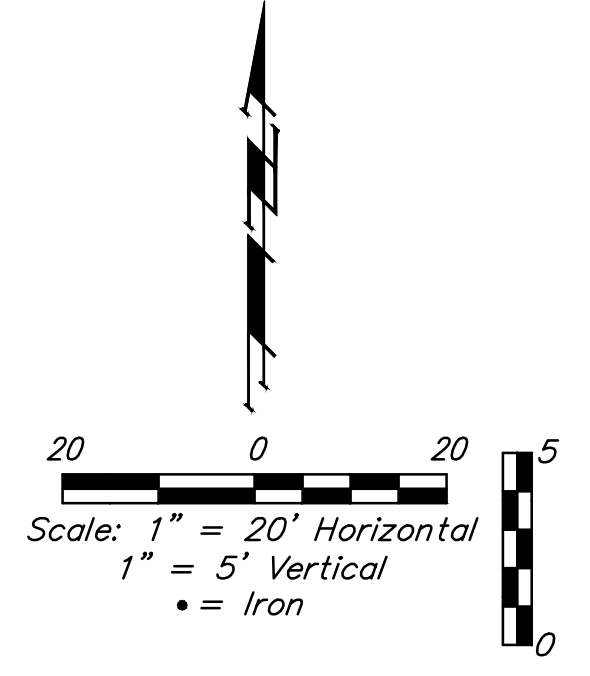


BENCHMARK:
 BM #1: City of Wichita disc top of headwall of RCBC 660'± east of the SE Cor. of the SE1/4, SEC. 22, TWP. 27-S, R-2-W. Elev. = 1410.27 NAVD88

BM #2: 60d step nail in utility pole 28' east of Q 162nd St. W. and 26' north of Q of Maple. Elev. = 1417.99 NAVD88



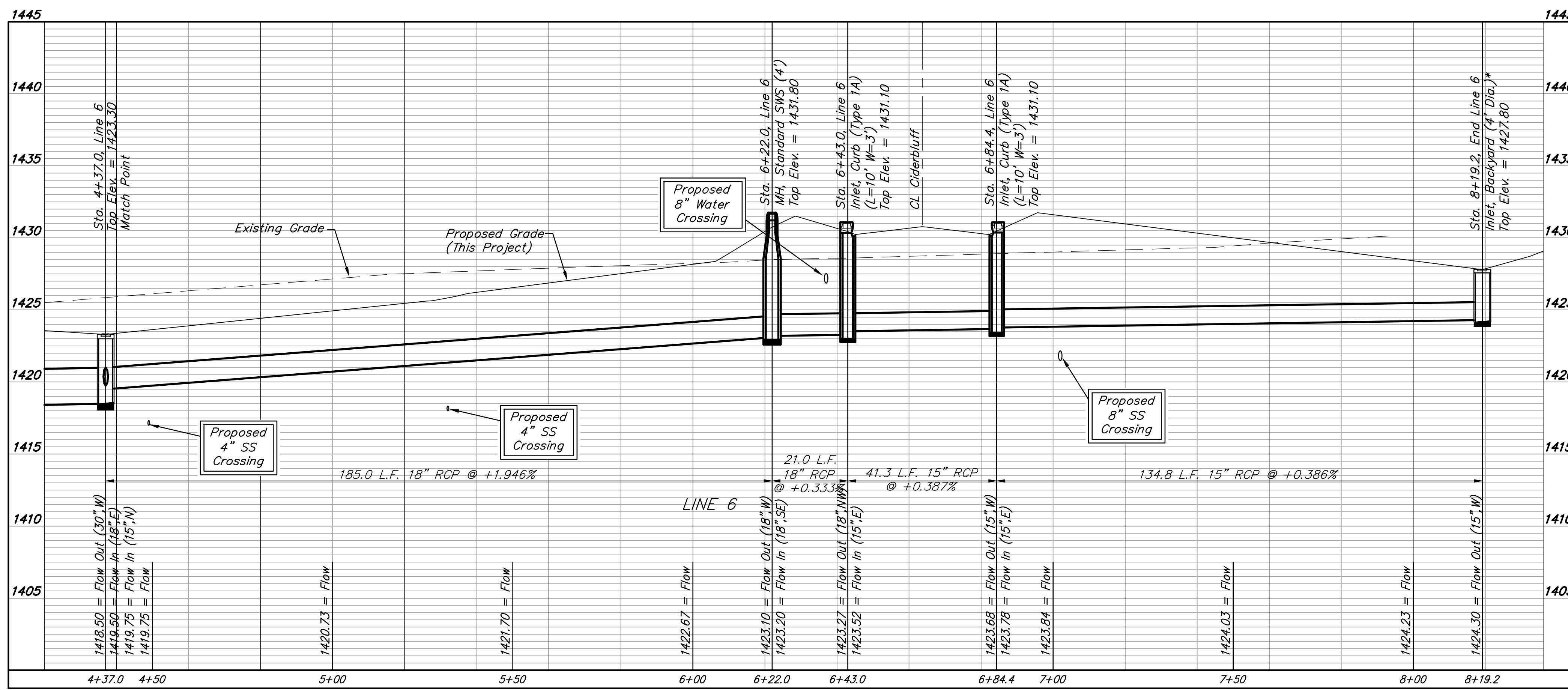
All trench and inlet excavation areas from Sta. 6+43.0 to Sta. 6+84.4, Line 6 shall be backfilled with sand. The sand backfill shall be within two feet of existing grade and shall be water-jetted and vibrated during backfilling. All costs shall be paid for as L.F. "Fill, Sand (Flushed & Vibrated)".



Trees in conflict with storm water sewer construction to be removed by contractor. To be paid for as lump sum bid item "Site Clearing"

All other trees shall remain and be protected from damage during construction. Overhanging limbs shall be trimmed by the Contractor using a chain saw only as necessary for construction and with approval of the Engineer. Cost of tree trimming to be included in bid item "Site Clearing"

*Inlet location may be adjusted to avoid trees. Prior to installing Pipe from Sta. 6+84.4 to Sta. 8+19.2, contact developer to coordinate inlet location adjustment.



BAUGHMAN
 WICHITA, KS
 ENGINEERING, PLANNING, LANDSCAPE ARCHITECTURE
 1500 W. CENTRAL AVENUE, SUITE 200
 WICHITA, KS 67202
 P: 316.262.1100
 F: 316.262.1101
 www.baughman.com
 Date: 08/19/19

PIKE ADDITION - PH. 1
LINE 6
 SANITARY SEWER IMPROVEMENTS

SHEET
 OF
14
40