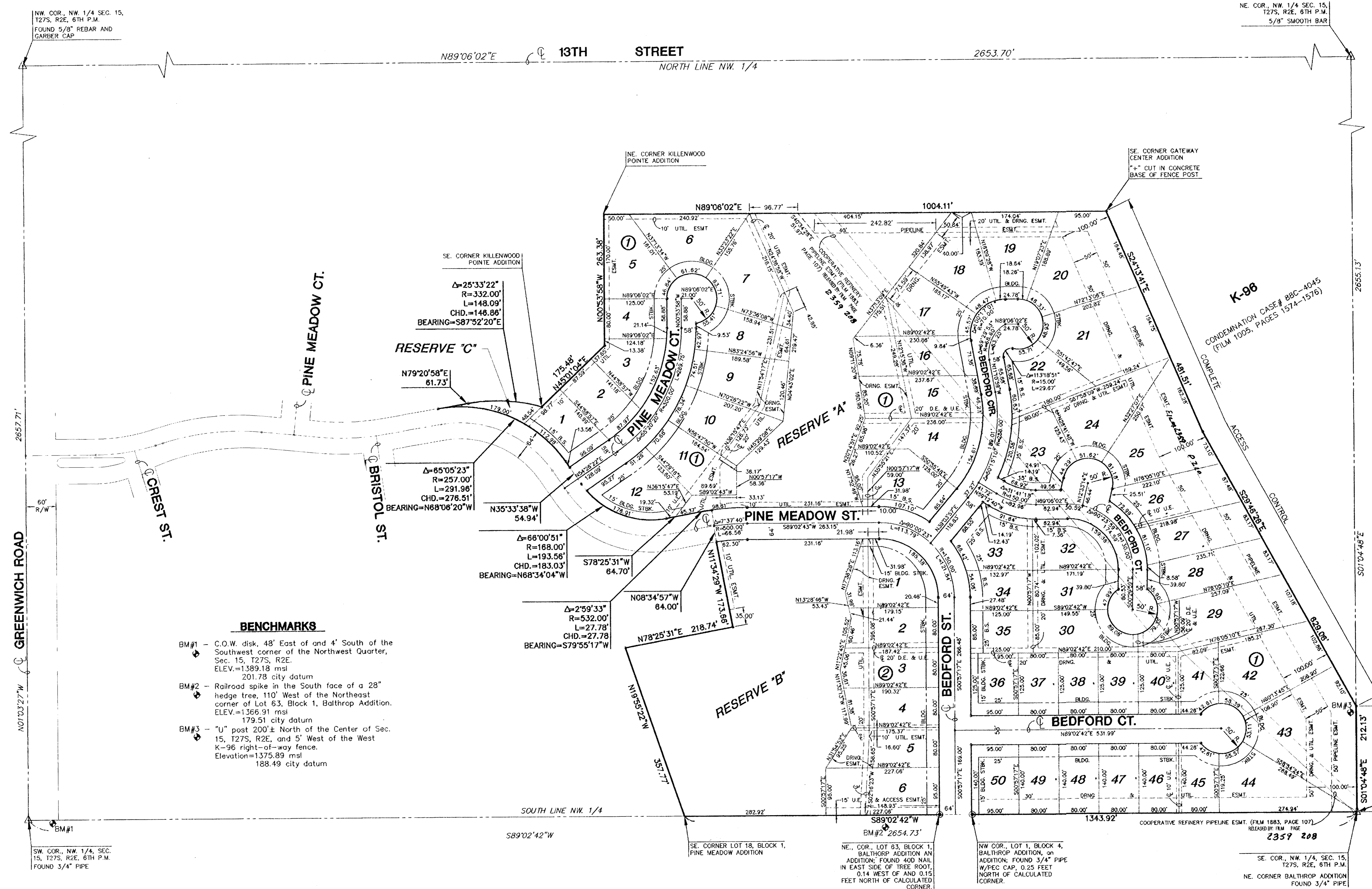


# FINAL PLAT

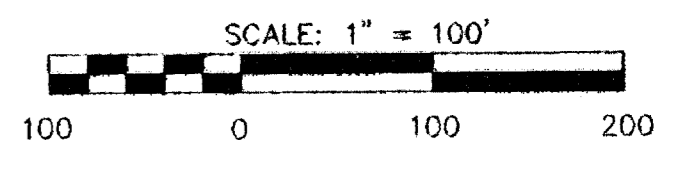
## PINE MEADOW SECOND ADDITION

### AN ADDITION TO WICHITA, SEDGWICK COUNTY, KANSAS



NW COR., NW 1/4 SEC. 15,  
T27S, R2E, 6TH P.M.  
FOUND 5/8" REBAR AND  
GARBER CAP

NE COR., NW 1/4 SEC. 15,  
T27S, R2E, 6TH P.M.  
5/8" SMOOTH BAR



#### LEGEND

- △ = SECTION CORNER MONUMENT FOUND
- = FOUND PROPERTY CORNER REBAR
- = SET 5/8" REBAR W/ MKEC CLS #39 CAP
- U.E. = UTILITY EASEMENT
- B.S. = BUILDING SETBACK

MINIMUM PAD ELEVATIONS (LOWEST OPENINGS)			
LOT	BLOCK	ELEVATION (CITY DATUM)	ELEVATION (UGSS)
7	1	186.8	1374.2
8	1	186.8	1374.2
9	1	186.8	1374.2
10	1	186.8	1374.2
11	1	186.8	1374.2
12	1	186.8	1374.2
13	1	186.8	1374.2
14	1	186.8	1374.2
15	1	186.8	1374.2
16	1	186.8	1374.2
17	1	186.8	1374.2
18	1	186.8	1374.2
1	2	182.3	1369.7
2	2	182.3	1369.7
3	2	182.3	1369.7
4	2	182.3	1369.7
5	2	182.3	1369.7
6	2	182.3	1369.7

#### BENCHMARKS

- BM#1 - C.O.W. disk, 48' East and 4' South of the Southwest corner of the Northwest Quarter, Sec. 15, T27S, R2E. ELEV.=1389.18 msl  
201.78 city datum
- BM#2 - Railroad spike in the South face of a 28" hedge tree, 110' West of the Northeast corner of Lot 63, Block 1, Bathrop Addition. ELEV.=1366.91 msl  
179.51 city datum
- BM#3 - "U" post 200± North of the Center of Sec. 15, T27S, R2E, and 5' West of the West K-96 right-of-way fence. Elevation=1375.89 msl  
188.49 city datum

GREENWICH ROAD

2657.71'

PINE MEADOW CT.

13TH STREET

2653.70'

NORTH LINE NW 1/4