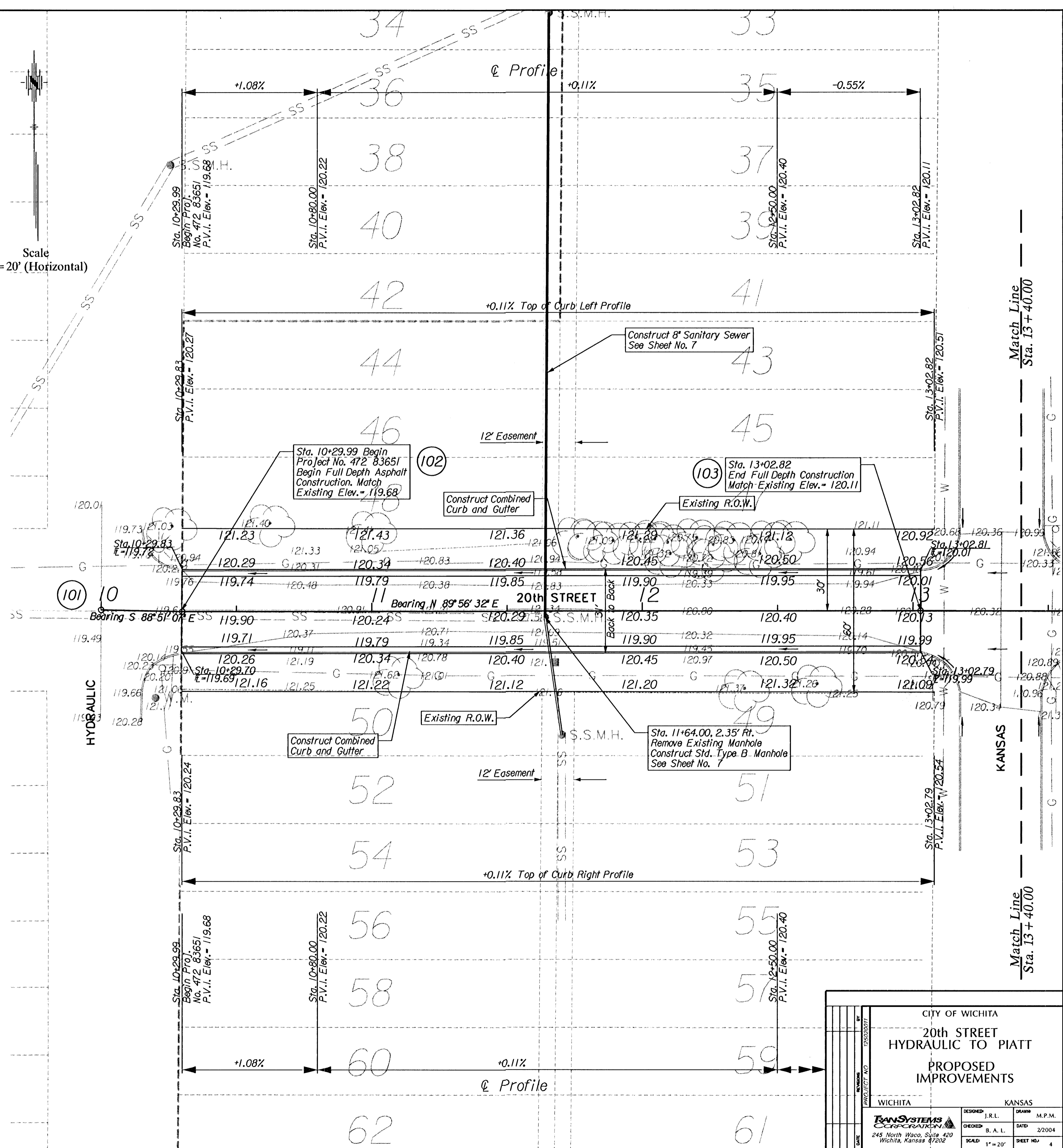


Benchmark #2 \*d\* T.C. 30' N+15.5' E of Minneapolis and 20th.  
 Northing= 5029.27  
 Easting= 5676.48  
 Elevation= 122.37  
 Station 16+76.57, 29.59' Lt.

COORDINATE REFERENCE

Point	North	East	Description	Station	Offset	Offset Direction
101	5,000.41	4,999.88	CP-CONTROL POINT 101	10+00.00	0.00	—
102	4,999.81	5,029.87	CP-CONTROL POINT 102	10+29.99	0.00	—
103	5,000.08	5,302.69	CP-CONTROL POINT 103	13+02.82	0.00	—
104	4,999.67	5,685.73	CP-CONTROL POINT 104	16+85.85	0.00	—
105	5,000.28	5,958.80	CP-CONTROL POINT 105	19+58.92	0.00	—
106	4,999.31	6,018.79	CP-CONTROL POINT 106	20+18.92	0.00	—
107	4,998.99	6,321.60	CP-CONTROL POINT 107	23+21.73	0.00	—
201	5,016.51	5,689.28	CP-EXISTING BAR	16+89.44	16.83	LT
202	4,969.60	5,685.45	CP-EXISTING BAR	16+85.60	30.07	RT
203	5,016.51	5,689.28	CP-EXISTING BAR	16+89.44	16.83	LT
204	5,029.37	5,963.84	CP-EXISTING BAR/R/W PIN	19+63.49	29.16	LT
205	5,029.34	6,013.84	CP-EXISTING BAR/R/W PIN	20+13.49	29.95	LT
206	5,011.06	6,028.54	CP-EXISTING BAR	20+28.66	11.76	LT
301	4,954.23	5,170.02	SANITARY SEWER MANHOLE	11+70.10	45.72	RT
302	4,997.59	5,163.88	SANITARY SEWER MANHOLE	11+64.00	2.35	RT
302	5,220.12	5,165.31	SANITARY SEWER MANHOLE	11+65.31	220.18	LT

Scale  
 1" = 20' (Horizontal)



CITY OF WICHITA  
 20th STREET  
 HYDRAULIC TO PIATT  
 PROPOSED IMPROVEMENTS

WICHITA KANSAS

DESIGNED: J.R.L. DRAWN: M.P.M.  
 CHECKED: B.A.L. DATE: 2/2004  
 SCALE: 1" = 20' SHEET NO: 4

TRANS SYSTEMS CORPORATION  
 245 North Waco, Suite 420  
 Wichita, Kansas 67202