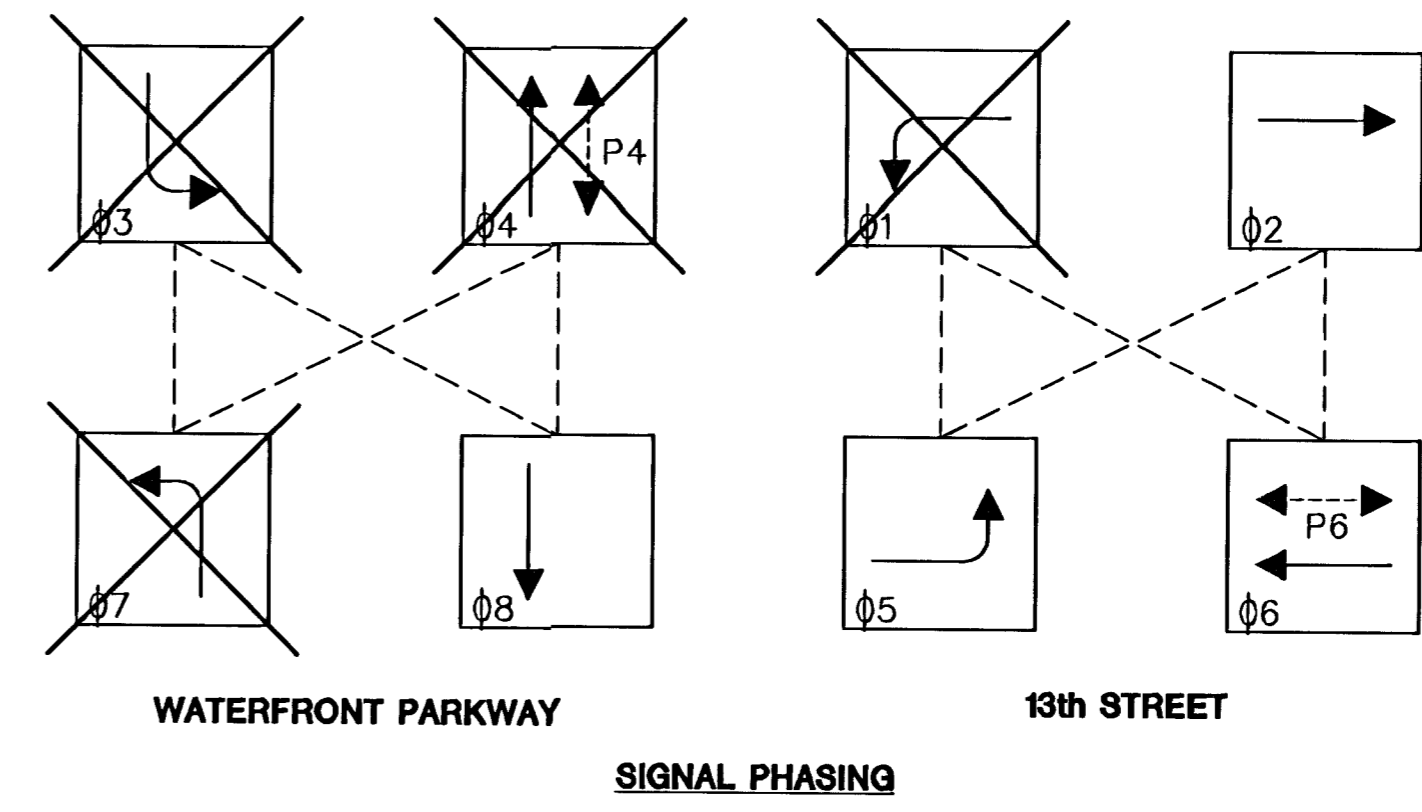
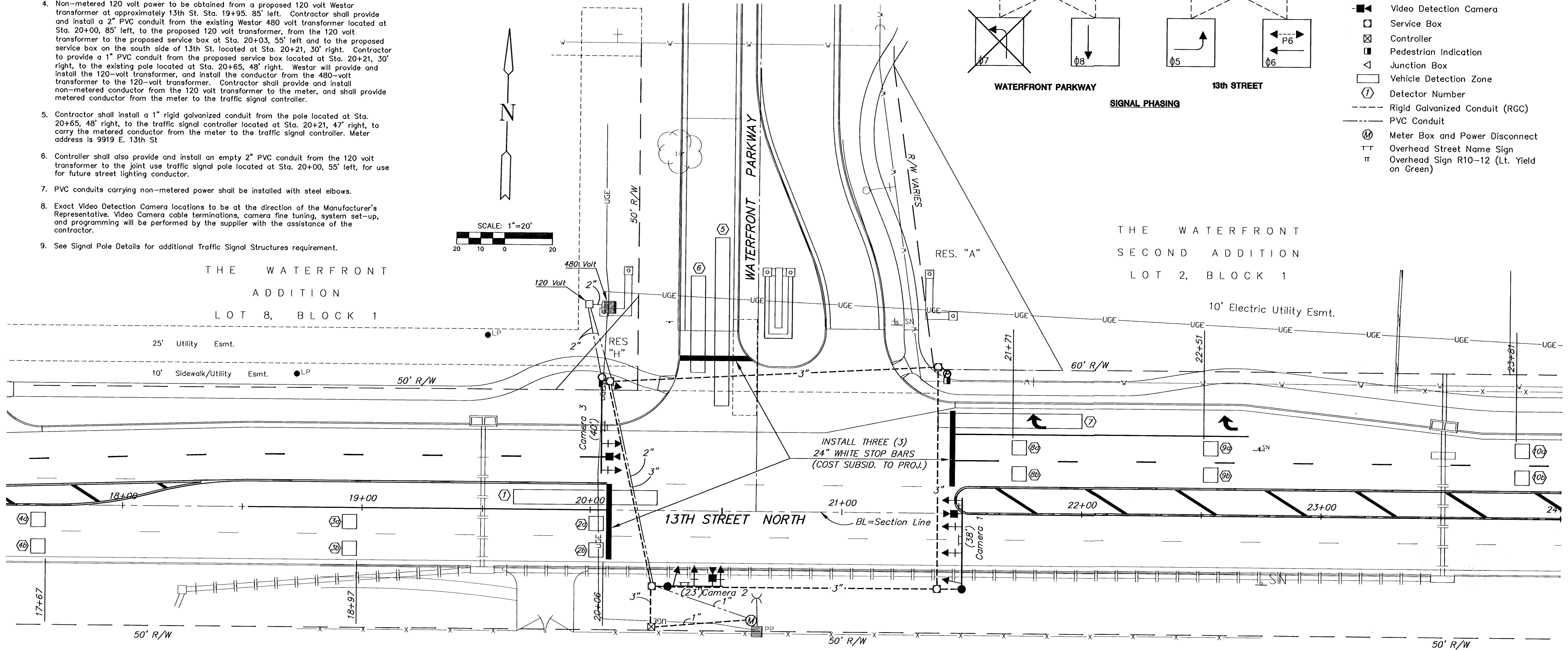
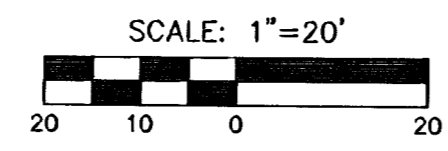


GENERAL NOTES

- Conduit shall be jacked or bored if not installed before placing of new pavement.
- Placement of Service/Junction Boxes, Conduit Runs and Controller are typical and may be adjusted as directed by the Engineer to facilitate installation.
- The Contractor shall contact utility companies which may be affected by the installation of Traffic Signalization prior to any construction.
- Non-metered 120 volt power to be obtained from a proposed 120 volt Westar transformer at approximately 13th St. Sta. 19+95. 85' left. Contractor shall provide and install a 2" PVC conduit from the existing Westar 480 volt transformer located at Sta. 20+00, 85' left, to the proposed 120 volt transformer, from the 120 volt transformer to the proposed service box at Sta. 20+03, 55' left and to the proposed service box on the south side of 13th St. located at Sta. 20+21, 30' right. Contractor to provide a 1" PVC conduit from the proposed service box located at Sta. 20+21, 30' right, to the existing pole located at Sta. 20+65, 48' right. Westar will provide and install the 120-volt transformer, and install the conductor from the 480-volt transformer to the 120-volt transformer. Contractor shall provide and install non-metered conductor from the 120 volt transformer to the meter, and shall provide metered conductor from the meter to the traffic signal controller.
- Contractor shall install a 1" rigid galvanized conduit from the pole located at Sta. 20+65, 48' right, to the traffic signal controller located at Sta. 20+21, 47' right, to carry the metered conductor from the meter to the traffic signal controller. Meter address is 9919 E. 13th St
- Controller shall also provide and install an empty 2" PVC conduit from the 120 volt transformer to the joint use traffic signal pole located at Sta. 20+00, 55' left, for use for future street lighting conductor.
- PVC conduits carrying non-metered power shall be installed with steel elbows.
- Exact Video Detection Camera locations to be at the direction of the Manufacturer's Representative. Video Camera cable terminations, camera fine tuning, system set-up, and programming will be performed by the supplier with the assistance of the contractor.
- See Signal Pole Details for additional Traffic Signal Structures requirement.



- LEGEND**
- Steel Traffic Signal Pole (Joint use)
 - Steel Traffic Signal Pole (Std. Pole)
 - ⊕ Pedestal Pole (15' Aluminum)
 - ➔ Traffic Signal Indication (Type A) w/Back Plate
 - ➔ Mast Arm Suspended Traffic Signal
 - Video Detection Camera
 - Service Box
 - ⊗ Controller
 - ⊠ Pedestrian Indication
 - ⊡ Junction Box
 - ▭ Vehicle Detection Zone
 - ① Detector Number
 - Rigid Galvanized Conduit (RGC)
 - - - PVC Conduit
 - ⊕ Meter Box and Power Disconnect
 - TT Overhead Street Name Sign
 - TT Overhead Sign R10-12 (Lt. Yield on Green)



THE WATERFRONT
ADDITION
LOT 8, BLOCK 1

THE WATERFRONT
SECOND ADDITION
LOT 2, BLOCK 1

INSTALL THREE (3)
24" WHITE STOP BARS
(COST SUBSID. TO PROJ.)

TYPE 170 CONTROLLER SETTINGS

INTERVAL	WAPITI PROGRAM PHASE								NORMAL DISPLAY FEATURES																
	1 WBLT	2 EB	3 SBLT	4 NB	5 EBLT	6 WB	7 NBLT	8 SB	0 YEAR	1 MONTH	2 DAY/MONTH	3 DAY/WEEK	4 HOUR	5 MINUTE	6 SECOND	7	8	9	a	b	c	d	e	f	
MAX	0	60			30	60		30																	
MAX 2	1	60			30	60		30																	
WALK	2	8			8																				
FL. DW.	3	25			25																				
MAX INIT.	4	10			6	10		6																	
MIN GREEN	5	8			5	8		5																	
TBR	6	15			1	15		1.0																	
TTR	7	25			1	25		1.0																	
PASSAGE	8																								
MIN GAP	a	2.0			1.0	2.0		1.0																	
ADD ACT	b	2.0			1.0	2.0		1.0																	
YELLOW	c	4.0			3.0	4.0		3.0																	
RED CLR.	d	2.0			1.0	2.0		1.0																	
RED REV.	e																								
WALK II	f																								

LTT-2 WB THRU 06 WITH 01 DETECTION

MISCELLANEOUS CONSTRUCTION ITEMS

ITEM	UNIT	QUANTITY
24" WHITE STOP BAR	L.F.	98

COST OF ALL ABOVE ITEMS SUBSIDIARY TO CONSTRUCTION

DETECTION ZONES

CAMERA NO.	ZONE NO.	SIZES (W x L)	MOVEMENT CALLED
1	1	6x60	5
1	2a, 2b	6x6	2
1	3a, 3b	6x6	2
1	4a, 4b	6x6	2
2	5	6x70	8
2	6	6x40	8
3	7	6x60	6
3	8a, 8b	6x6	6
3	9a, 9b	6x6	6
3	10a, 10b	6x6	6

H:\CIVIL\02014\DWG\PAV\13THPAV\SIGNAL\02014SG1

13th STREET TRAFFIC SIGNALIZATION
PROJECT NAME

SIGNAL PLAN
SHEET TITLE

GAR DESIGN BY: KKL DRAWN BY: GJA CHECKED BY:
NOVEMBER 2003 DATE: 02014SG1 JOB NO. 2 / 7 SHEET/OF

411 N. WEBB ROAD
WICHITA, KS. 67206
316-684-9600