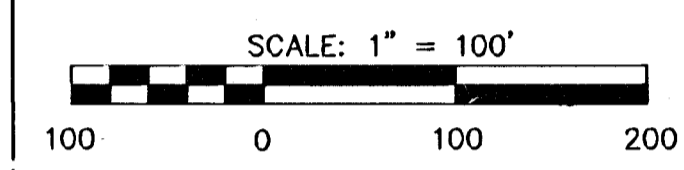
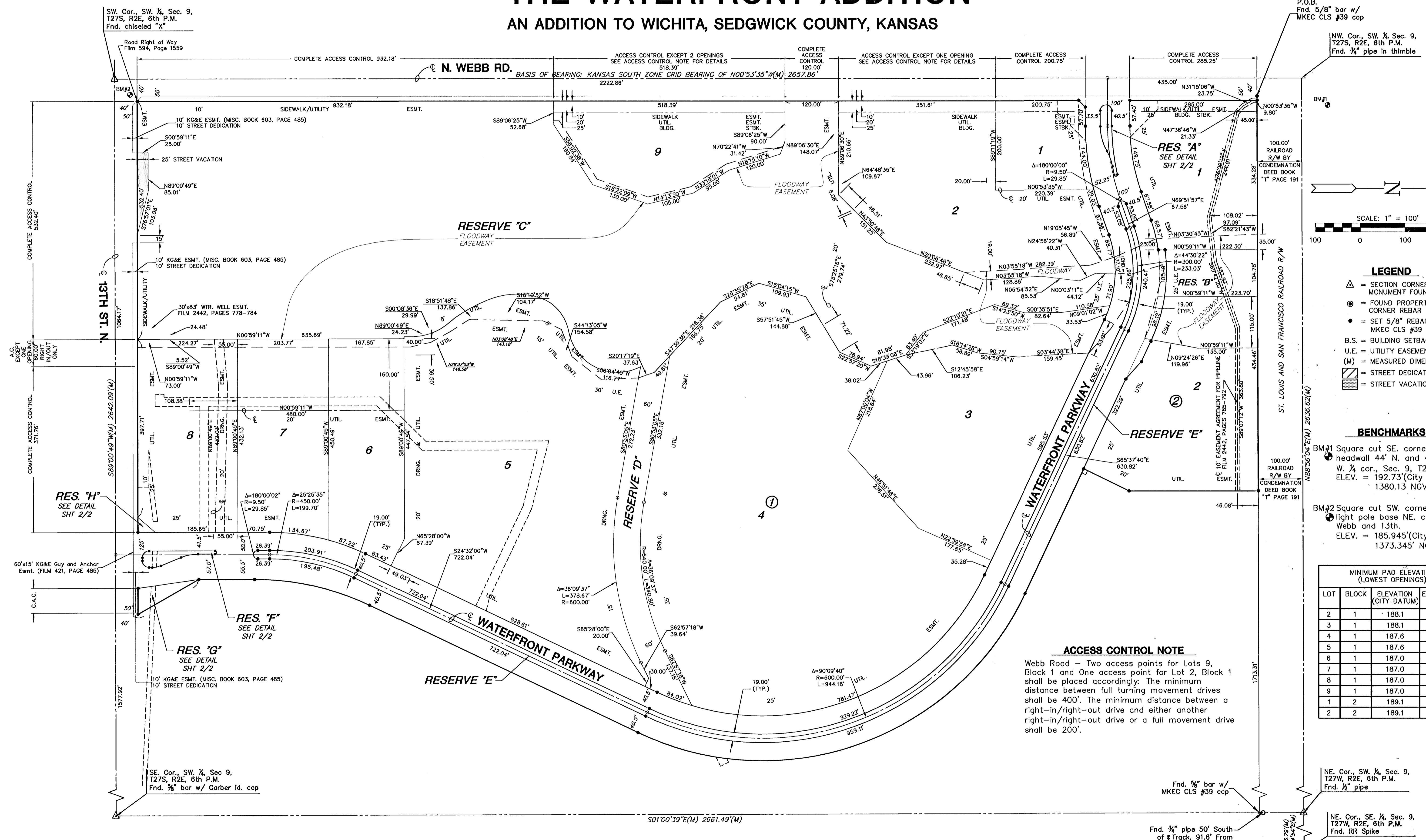


FINAL PLAT

THE WATERFRONT ADDITION

AN ADDITION TO WICHITA, SEDGWICK COUNTY, KANSAS



- LEGEND**
- △ = SECTION CORNER MONUMENT FOUND
 - ⊙ = FOUND PROPERTY CORNER REBAR
 - = SET 5/8" REBAR W/ MKEC CLS #39 CAP
 - B.S. = BUILDING SETBACK
 - U.E. = UTILITY EASEMENT
 - (M) = MEASURED DIMENSION
 - ▨ = STREET DEDICATION
 - ▩ = STREET VACATION

- BENCHMARKS**
- BM#1 Square cut SE. corner headwall 44' N. and 42' E. of W. 1/4 cor., Sec. 9, T27S, R2E ELEV. = 192.73'(City Datum) 1380.13 NGVD
 - BM#2 Square cut SW. corner signal light pole base NE. corner Webb and 13th. ELEV. = 185.945'(City Datum) 1373.345' NGVD

MINIMUM PAD ELEVATIONS (LOWEST OPENINGS)			
LOT	BLOCK	ELEVATION (CITY DATUM)	ELEVATION (NGVD)
2	1	188.1	1375.5
3	1	188.1	1375.5
4	1	187.6	1375.0
5	1	187.6	1375.0
6	1	187.0	1374.4
7	1	187.0	1374.4
8	1	187.0	1374.4
9	1	187.0	1374.4
1	2	189.1	1376.5
2	2	189.1	1376.5

ACCESS CONTROL NOTE

Webb Road - Two access points for Lots 9, Block 1 and One access point for Lot 2, Block 1 shall be placed accordingly. The minimum distance between full turning movement drives shall be 400'. The minimum distance between a right-in/right-out drive and either another right-in/right-out drive or a full movement drive shall be 200'.

H:\CIVIL\2020\4. DWG\PLAT\0201441.DWG