

# WOODLAWN BLVD. TURN LANES

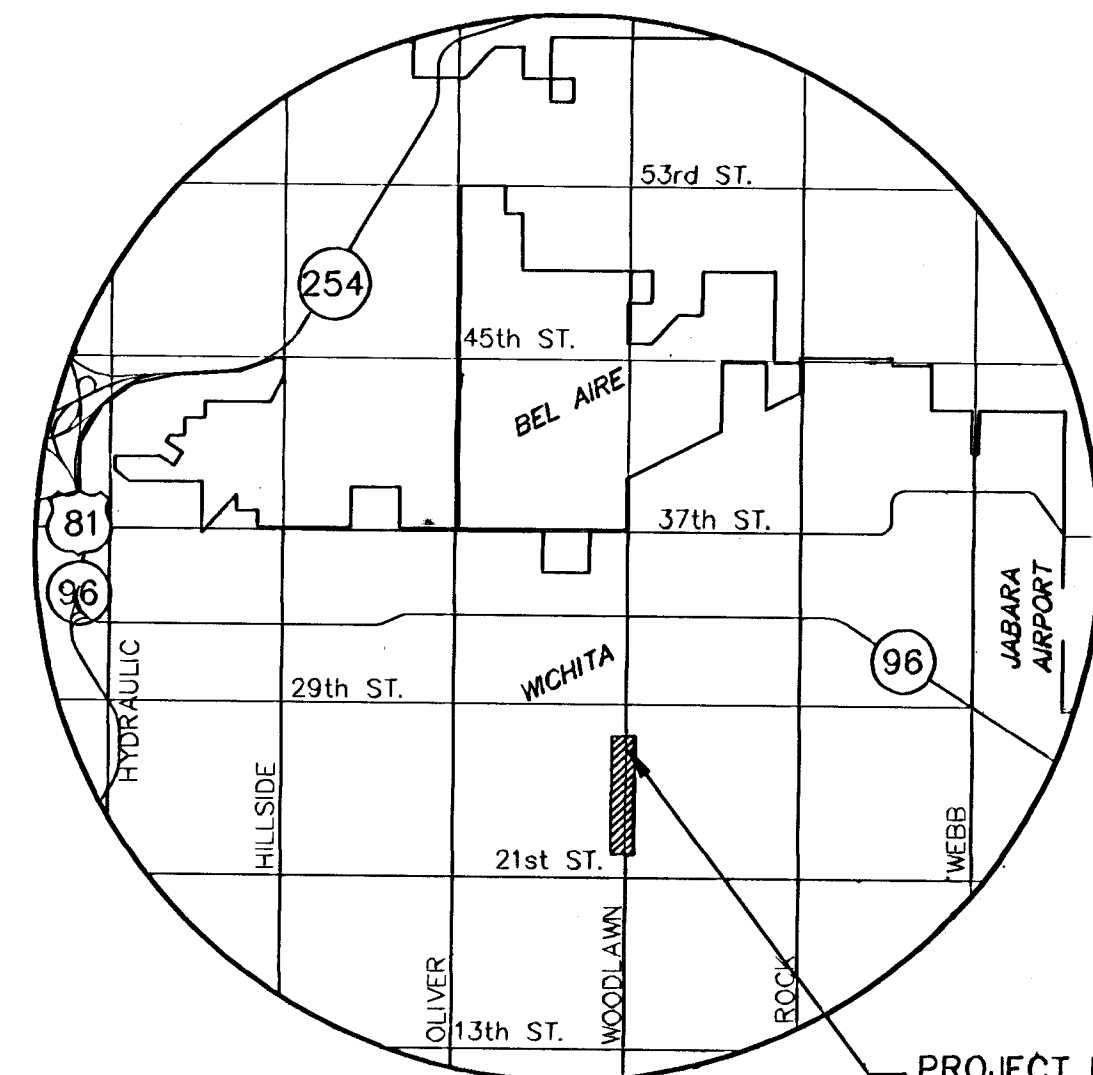
CITY OF WICHITA  
SEDGWICK COUNTY, KANSAS

PROJECT NO. 472-83708 (765881) &  
PROJECT NO. 472-84047 (765882)

JIM ARMOUR P.E. - ACTING CITY ENGINEER

## GENERAL NOTES

- UNLESS SHOWN OR STATED OTHERWISE ON THESE DRAWINGS, MATERIALS AND CONSTRUCTION SHALL BE IN ACCORDANCE WITH CITY OF WICHITA CONCRETE PAVEMENT AND ASPHALTIC CONCRETE PAVEMENT SPECIFICATIONS.
- CONTRACTOR WILL BE REQUIRED TO PROVIDE A MINIMUM ADVANCE NOTICE OF SEVENTY-TWO (72) HOURS TO UTILITY COMPANIES PRIOR TO STARTING ANY EXCAVATION AS FOLLOWS:  
KANSAS ONE-CALL 1-800-344-7233  
OR 687-2470 (LOCAL WICHITA)
- THE CONTRACTOR MUST NOTIFY THE FOLLOWING IN CASE OF AN EMERGENCY:  
SBC (TELEPHONE) 800-870-8390  
COX COMMUNICATIONS (CABLE) 262-0661  
WESTAR (ELECTRIC) 383-8600  
KANSAS GAS SERVICE (GAS) 832-3101  
CITY OF WICHITA WATER & SEWER MAINT. 262-6000  
AQUILA (GAS) 946-0096
- THE CONTRACTOR SHALL BE RESPONSIBLE FOR PRESERVING PROPERTY IRONS. THE CONTRACTOR WILL BE REQUIRED TO RE-ESTABLISH ANY PROPERTY IRONS WHICH ARE DAMAGED OR DESTROYED BY HIS CONSTRUCTION OPERATIONS. SUCH IRONS SHALL BE RE-ESTABLISHED BY A LICENSED LAND SURVEYOR IN ACCORDANCE WITH STATE LAWS.
- EXISTING UTILITIES AND THEIR LOCATIONS, AS SHOWN ON THE PLANS REPRESENT THE BEST INFORMATION OBTAINABLE FOR DESIGN. LOCATION INFORMATION HAS BEEN OBTAINED FROM THE VARIOUS UTILITY COMPANIES AND IS EITHER FROM COMPANY RECORD DRAWINGS OR COMPANY PROVIDED FIELD LOCATIONS. THE PLAN LOCATIONS SHOWN ARE NOT GUARANTEED. ADDITIONAL EXISTING UTILITIES MAY ALSO BE ENCOUNTERED.
- RUBBLE FROM THE REMOVAL OF MISCELLANEOUS STRUCTURES AND EXCESS EXCAVATION WHICH IS TO BE WASTED SHALL BE DISPOSED OF ON SITES TO BE PROVIDED BY THE CONTRACTOR. THESE SITES SHALL BE APPROVED BY THE ENGINEER AS TO SUITABILITY, APPEARANCE AND SITE LOCATION. LOCATIONS THAT, IN THE OPINION OF THE ENGINEER, WILL LEAVE AN UNSIGHTLY APPEARANCE WILL NOT BE APPROVED. ALL DISPOSAL SITES MUST BE APPROVED BY THE KANSAS DEPARTMENT OF HEALTH AND ENVIRONMENT. MATERIAL EITHER STOCKPILED OR DISPOSED OF IN A FLOOD PLAIN WOULD REQUIRE A KANSAS STATE BOARD OF AGRICULTURE PERMIT. ANY MATERIAL DUMPED IN WATERS OF THE UNITED STATES OR WETLANDS IS SUBJECT TO U.S. CORPS OF ENGINEERS PERMITTING REGULATIONS. ANY MATERIAL BURIED OR STOCKPILED BEYOND APPROVED CONSTRUCTION LIMITS WOULD REQUIRE ADDITIONAL ARCHAEOLOGICAL INVESTIGATIONS UNLESS BURIED IN A PREVIOUSLY APPROVED BORROW LOCATION.
- A SAW CUT OF AT LEAST ONE-HALF THE DEPTH OF THE EXISTING SURFACE COURSES OR ONE-FOURTH THE DEPTH OF THE EXISTING TOTAL PAVEMENT THICKNESS SHALL BE PROVIDED AT LOCATIONS WHERE PROPOSED CONSTRUCTION ABUTS AN EXISTING SURFACE OR PAVEMENT FOR WHICH PARTIAL REMOVAL OF THAT SURFACE OR PAVEMENT IS REQUIRED. SAW JOINT TO FACILITATE REMOVAL WITHIN THREE (3) FEET OF EXISTING JOINTS WILL NOT BE PERMITTED AND FOR SUCH INSTANCES THE LIMITS OF REMOVAL SHALL EXTEND TO THE EXISTING JOINT. SUCH SAW CUTS WILL NOT BE PAID FOR DIRECTLY AND THIS COST SHALL BE CONSIDERED AS SUBSIDIARY TO THE REMOVAL OF SURFACE OR PAVEMENT.
- CONTRACTOR SHALL RESEED AND MULCH ALL DISTURBED AREAS. COST SHALL BE CONSIDERED SUBSIDIARY TO SITE RESTORATION.
- ALL TOPSOIL SHALL BE STRIPPED IN AREAS OF CUT/FILL AND STOCKPILED.
- A 6" LAYER OF TOPSOIL IS TO BE PLACED OVER ALL AREAS WHERE THE VIRGIN GRADE NO LONGER EXISTS. NOTE: THE FINISHED GRADE ON PLANS INDICATE THE SURFACE ELEVATION AFTER PLACEMENT OF 6" TOPSOIL.
- CONTRACTOR SHALL BE RESPONSIBLE FOR REMOVAL OF EXISTING PAVEMENT & SIDEWALKS FROM AREA OF PROPOSED IMPROVEMENTS, AND LEGALLY DISPOSE OFF SITE (SEE NOTE 5).
- CONTRACTOR SHALL BE RESPONSIBLE FOR THE COORDINATION ASSOCIATED WITH RELOCATION AND REMOVAL OF ALL UTILITIES. ARRANGEMENTS SHALL BE MADE WITH UTILITY COMPANIES FOR RELOCATES.
- ALL ADJACENT BUILDINGS, STRUCTURES, PARKING LOTS, DRIVES, STREETS, UTILITIES AND APPURTENANCE OTHER THAN SHOWN FOR REMOVAL AND/OR REPLACEMENT SHALL BE PROTECTED FROM DAMAGE DURING CONSTRUCTION OF THE PROJECT. DAMAGED ITEMS SHALL BE REMOVED AND REPLACED BY CONTRACTOR AT NO COST TO THE OWNER. FENCING, SHEETING AND SHORING MAY BE REQUIRED TO PROTECT THE ITEMS MENTIONED ABOVE.
- ACCESS SHALL BE MAINTAINED TO ALL ADJACENT PROPERTIES THROUGHOUT CONSTRUCTION AT LOCATIONS THAT HAVE DIRECT ACCESS TO WOODLAWN.



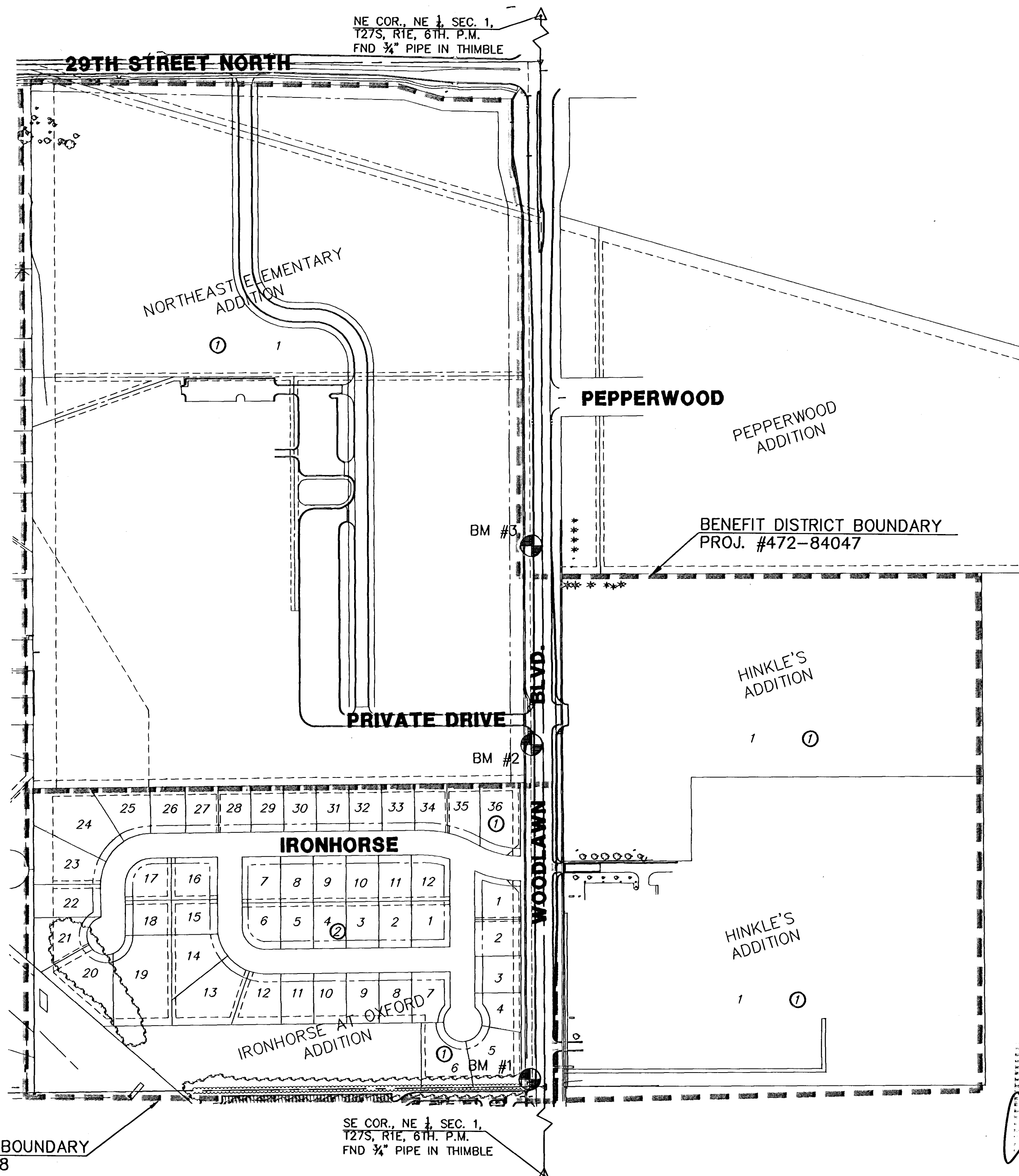
LOCATION MAP

## INDEX TO DRAWINGS

SHEET NO.	DESCRIPTION
1	TITLE SHEET
2	TYPICAL SECTIONS
3-4	PAVING DETAILS
5-7	PAVING PLANS
8-9	SIGNAL PLANS
10-12	SIGNAL DETAILS
13	PAVEMENT MARKING PLAN
14	TRAFFIC CONTROL PLAN
15-18	TRAFFIC CONTROL DETAILS
19-22	BMP DETAILS
23-26	CROSS SECTIONS
27-30	PLAT

## BENCHMARK

- BM #1 COW BENCHMARK DISC AT 25TH ST. NORTH AND WOODLAWN. 24' NORTH OF CL EAST-WEST HEDGEROW AND 45.3' WEST OF CL OF WOODLAWN. C.O.W. ELEV.=189.16 NGVD=1376.56
- BM #2 RR SPIKE IN WEST FACE OF 7TH PP SOUTH OF 29TH NORTH ON THE WEST SIDE OF WOODLAWN. 1773.0' SOUTH AND 31' WEST OF THE NE CORNER SEC. 1, T27S, R1E. C.O.W. ELEV.=190.75
- BM #3 RR SPIKE IN WEST FACE OF 5TH PP SOUTH OF 29TH ST. NORTH ON THE WEST SIDE OF WOODLAWN. 1214.0' SOUTH AND 32.0' WEST OF THE NE CORNER OF SEC. 1, T27S, R1E. C.O.W. ELEV.=188.49 M=1375.903 NGVD=1375.89



EARTHWORK SUMMARY	
EXCAVATION*	1600 C.Y.
LOOSE FILL	90 C.Y.

\*EXCESS DIRT TO BE HAULED OFF SITE.

BENEFIT DISTRICT BOUNDARY  
PROJ. #472-83708

SE COR., NE 1/4 SEC. 1,  
T27S, R1E, 6TH. P.M.  
FND 3/4" PIPE IN THIMBLE

**MKEC**  
ENGINEERING CONSULTANTS  
411 N. WEBB ROAD  
WICHITA, KS. 67206  
316-684-9600

**WOODLAWN BLVD. TURN LANES**  
PROJECT NAME

---

**TITLE SHEET**  
SHEET TITLE

---

DESIGN BY: DAC DRAWN BY: JTC CHECKED BY: JTC

---

DATE: JUNE 2004 JOB NO.: 04147-ET SHEET/OF: 1 / 30