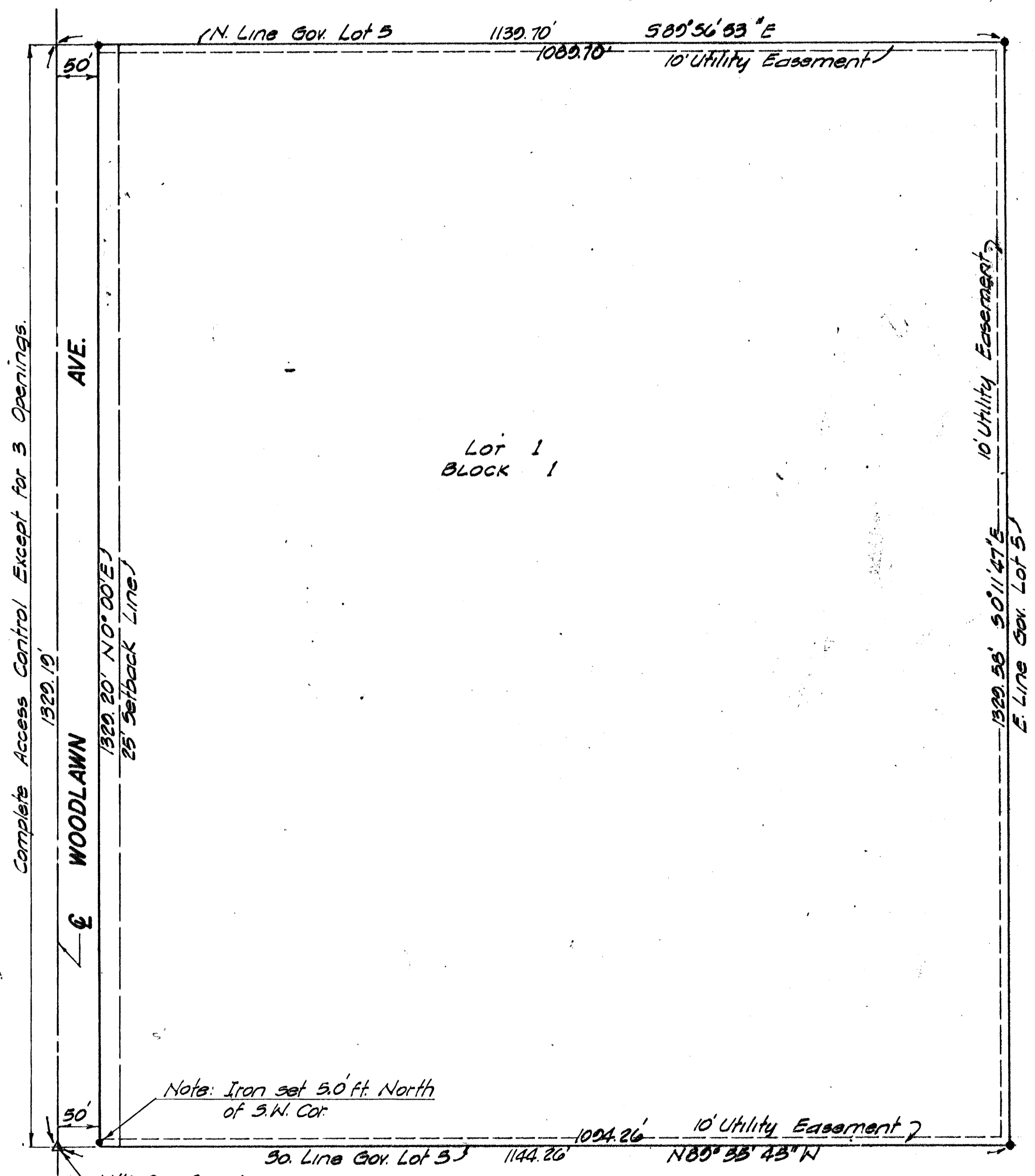


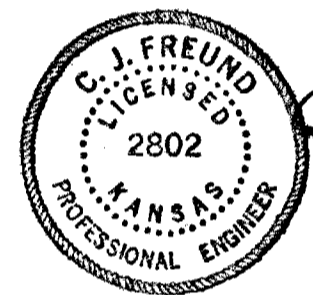
# HINKLE'S ADDITION

## SEDGWICK COUNTY, KANSAS



STATE OF KANSAS  
COUNTY OF SEDGWICK

I, CHARLES J. FREUND, A LICENSED PROFESSIONAL ENGINEER IN AFORESAID COUNTY AND STATE, DO HEREBY CERTIFY THAT I HAVE CAUSED TO BE SURVEYED AND PLATTED "HINKLE'S ADDITION", SEDGWICK COUNTY, KANSAS, INTO A LOT, A BLOCK AND A STREET, THE SAME BEING GOVERNMENT LOT 5 IN SECTION 6, TOWNSHIP 27 SOUTH RANGE 2 EAST OF THE 8TH P.M. AND MORE PARTICULARLY DESCRIBED AS: BEGINNING AT THE W 1/4 CORNER OF SAID SECTION 6, THENCE BEARING N 0° 00' E ALONG THE WEST LINE OF SAID SECTION 6, A DISTANCE OF 1329.19 FEET, THENCE BEARING S 89° 56' 53" E A DISTANCE OF 1139.70 FEET, THENCE BEARING S 0° 11' 47" E A DISTANCE OF 1329.58 FEET, THENCE BEARING N 89° 55' 45" W A DISTANCE OF 1144.26 FEET TO THE PT. OF BEGINNING. CONTAINING 34.85 ACRES MORE OR LESS.



*Charles J. Freund*  
CHARLES J. FREUND  
KANSAS #2802

KNOW ALL MEN BY THESE PRESENTS, THAT I, THE UNDERSIGNED TRUSTEE OF THE LAND AS ABOVE SET FORTH IN THE ENGINEER'S CERTIFICATE, HAVE CAUSED THE LAND TO BE SURVEYED AND PLATTED INTO A BLOCK, A LOT, AND A STREET, THE SAME TO BE KNOWN AS HINKLE'S ADDITION, SEDGWICK COUNTY, KANSAS. EASEMENTS AS INDICATED FOR THE CONSTRUCTION AND MAINTENANCE OF PUBLIC UTILITIES ARE HEREBY GRANTED. THE STREET IS HEREIN DEDICATED TO AND FOR THE USE OF THE PUBLIC. ALL ABUTTERS RIGHTS OF ACCESS TO AND FROM WOODLAWN AVENUE OVER AND ACROSS THE WEST LINE OF LOT 1, BLOCK 1, SHALL HAVE ACCESS TO WOODLAWN AVENUE AT THREE LOCATIONS TO BE DESIGNATED BY THE APPROPRIATE GOVERNING BODY.

*Jack B. Hinkle*  
JACK B. HINKLE  
TRUSTEE OF THE EVA J. HINKLE TRUST

STATE OF KANSAS  
COUNTY OF SEDGWICK

BE IT REMEMBERED THAT ON THIS 23rd DAY OF May, 1972, BEFORE ME, A NOTARY PUBLIC IN AND FOR SAID COUNTY AND STATE CAME JACK B. HINKLE, TRUSTEE OF THE EVA J. HINKLE TRUST, AND TO ME PERSONALLY KNOWN TO BE THE SAME PERSON WHO EXECUTED THE FOREGOING INSTRUMENT OF WRITING AND DULY ACKNOWLEDGED THE EXECUTION OF SAME, IN TESTIMONY WHEREOF I HAVE HEREUNTO SET MY HAND AND AFFIXED MY NOTARIAL SEAL THE DAY AND YEAR ABOVE WRITTEN.

*Marcia Spicer*  
MARCIA SPICER  
NOTARY PUBLIC

MY COMMISSION EXPIRES 9-10-73

THIS PLAT OF HINKLE'S ADDITION, SEDGWICK COUNTY, KANSAS, HAS BEEN SUBMITTED TO AND APPROVED BY THE WICHITA-SEDGWICK COUNTY METROPOLITAN AREA PLANNING COMMISSION, WICHITA, KANSAS. DATED THIS 25th DAY OF May, 1972.

*Robert E. Blakely*  
ROBERT E. BLAKELY  
VICE CHAIRMAN

*Robert A. Lakin*  
ROBERT A. LAKIN  
SECRETARY

THIS PLAT APPROVED AND ALL DEDICATIONS SHOWN HEREON ARE ACCEPTED BY THE CITY COMMISSION OF THE CITY OF WICHITA, KANSAS, THIS 9th DAY OF August, 1972.

*Glenn J. Shavarian*  
GLENN J. SHAVARIAN  
CHAIRMAN

*Donald C. Gistak*  
DONALD C. GISTAK  
CITY CLERK

THIS PLAT APPROVED AND ALL DEDICATIONS SHOWN HEREON ARE ACCEPTED BY THE BOARD OF COUNTY COMMISSIONERS OF SEDGWICK COUNTY, KANSAS, THIS 25 DAY OF August, 1972.

*Earl E. Rush*  
EARL E. RUSH  
CHAIRMAN

ATTEST  
*Marie Warden*  
MARIE WARDEN  
COUNTY CLERK

*Elmer S. Peters*  
ELMER S. PETERS  
COMMISSIONER

*Tom Scott*  
TOM SCOTT  
COMMISSIONER

ENTERED ON TRANSFER RECORD THIS 28 DAY OF August, 1972.

#125360

*Marie Warden*  
MARIE WARDEN  
COUNTY CLERK

THIS IS TO CERTIFY THAT THIS INSTRUMENT WAS FILED FOR RECORD IN THE REGISTER OF DEEDS OFFICE AT 9:00 A.M., ON THE 28th DAY OF August, 1972.

*John Hale*  
JOHN HALE  
REGISTER OF DEEDS

*Pearl B. Gilbert*  
PEARL B. GILBERT  
DEPUTY

