

FINAL PLAT

NORTHEAST ELEMENTARY SCHOOL ADDITION

AN ADDITION TO WICHITA, SEDGWICK COUNTY, KANSAS

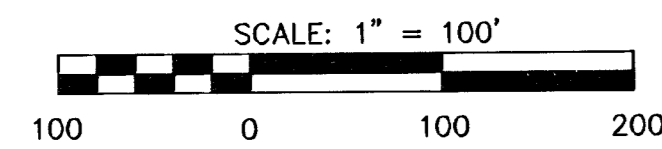
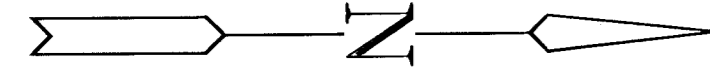
SW. Cor., NE 1/4, Sec. 1,
T27S, R1E, 6th P.M.
Fnd. Stone

NW. Cor., NE 1/4, Sec. 1,
T27S, R1E, 6th P.M.
Set 5/8" Rebar w/ MKEC
CLS 39 Id. Cap

ACCESS CONTROL NOTE:

Woodlawn Boulevard – Four access points to Woodlawn are allowed. The minimum distance between full turning movement drives shall be 400'. The minimum distance between a right-in/right-out drive and either another right-in/right-out drive or a full turning movement drive shall be 200'. The northern most full turning movement drive shall align with Pepperwood Road on the east side of Woodlawn as indicated on the face of plat.

29th Street North – Three access points to 29th are allowed. The minimum distance between full turning movement drives shall be 400'. The minimum distance between a right-in/right-out drive and either another right-in/right-out drive or a full turning movement drive shall be 200'. The first opening with full turning movements shall be a minimum distance of 400' from Woodlawn. The second opening from Woodlawn shall align with the existing drive on the north side of 29th Street as indicated on the face of plat.



LEGEND

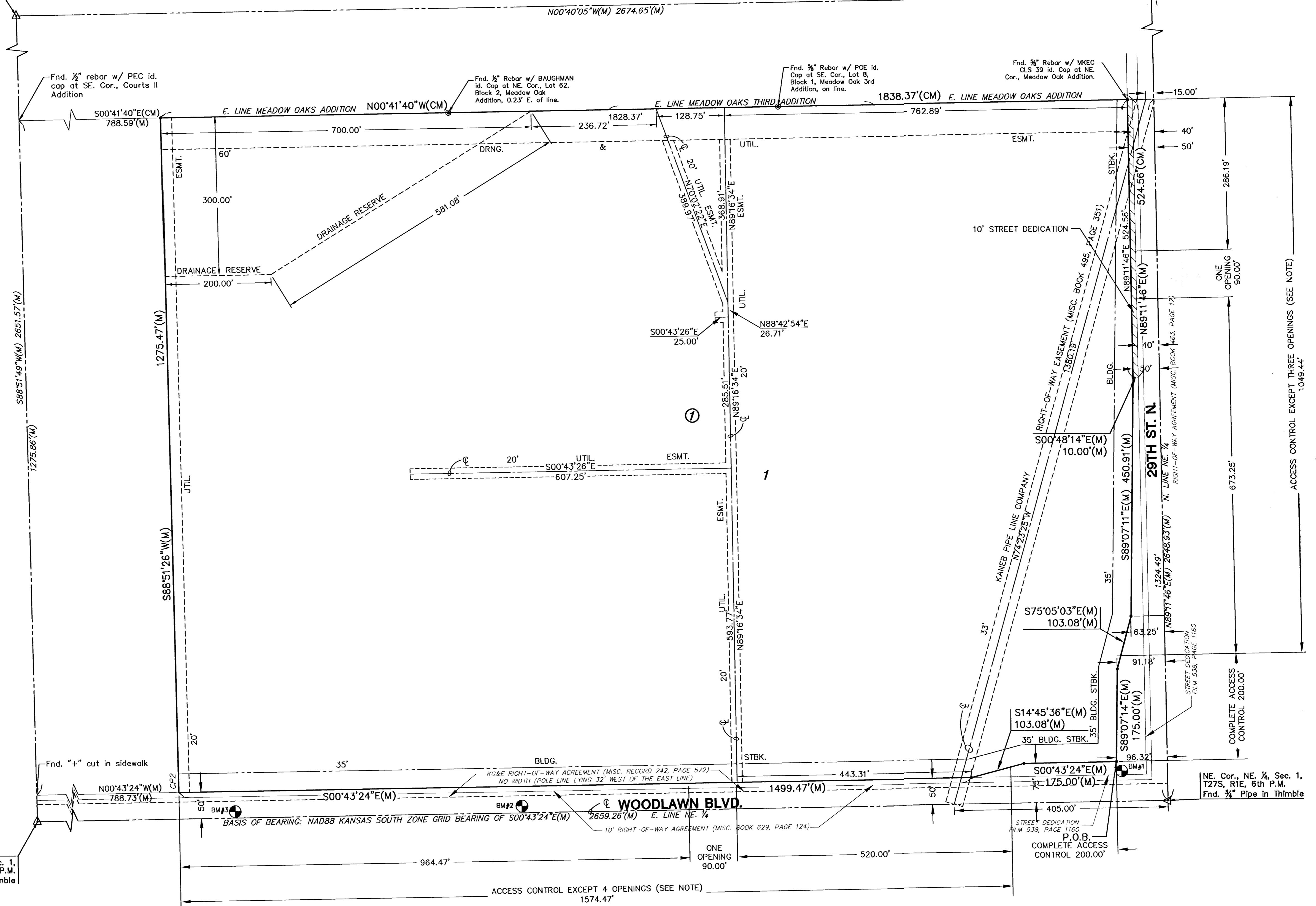
- △ = SECTION CORNER MONUMENT FOUND
- = FOUND PROPERTY CORNER REBAR
- = SET 5/8" REBAR W/ MKEC CLS #39 CAP
- (M) = MEASURED DIMENSION
- ▨ = 10' STREET DEDICATION

MINIMUM PAD ELEVATIONS (LOWEST OPENINGS)			
LOT	BLOCK	ELEVATION (CITY DATUM)	ELEVATION (USGS)
1	1	183.5	1370.9

BENCHMARKS

- BM#1 – RR spike in NE face PP at the SW Corner for 29th Street and Woodlawn.
Elev. = 177.34 (City Datum) 1364.74 (NGVD)
- BM#2 – RR Spike in W face of 5th PP S of 29th Street, W side of Woodlawn.
Elev. = 188.45 (City Datum) 1375.85 (NGVD)
- BM#3 – RR Spike in W face of 7th PP S of 29th Street, W side of Woodlawn.
Elev. = 190.70 (City Datum) 1378.10 (NGVD)

SE. Cor., NE 1/4, Sec. 1,
T27S, R1E, 6th P.M.
Fnd. 3/4" Pipe in Thimble



NE. Cor., NE 1/4, Sec. 1,
T27S, R1E, 6th P.M.
Fnd. 3/4" Pipe in Thimble