

PEPPERWOOD VILLAGE

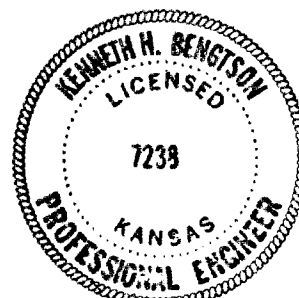
AN ADDITION TO WICHITA, SEDGWICK COUNTY, KANSAS

I, Kenneth H. Bengtson, a civil engineer in the state of Kansas, do hereby certify that I have been in responsible charge of surveying and platting of "PEPPERWOOD VILLAGE", an addition to Wichita, Sedgwick County, Kansas into lots, blocks, streets and reserves, the same being accurately set forth in the accompanying plat and described as follows:

All that part of the northwest quarter of Section 6, Township 27 south, Range 2 east of the 6th P.M., Sedgwick County, Kansas known as Pepperwood Addition, an addition to Wichita, Sedgwick County, Kansas, except that portion lying north of the 33' Kaneb pipeline easement.

I hereby certify that the details of this plat are correct to the best of my knowledge and belief this 17 day of May, 1982.

Kenneth H. Bengtson
Kenneth H. Bengtson
VAN DOREN-HAZARD-STALLINGS
260 North Rock Road, Suite 250
Wichita, Kansas 67206



Know all men by these presents that we, the under-
signed property owners of the land as above set-
forth in the civil engineer's certificate have
caused the same to be surveyed and platted into lots,
blocks, streets and reserves, the same to be known
as "PEPPERWOOD VILLAGE", an addition to Wichita,
Sedgwick County, Kansas. The streets are hereby dedi-
cated to and for the use of the public. Easements
for construction and maintenance of public utilities
are hereby granted. Reserves are platted for the use
of sidewalks, utilities, drainage, recreation and
open space and shall be owned and maintained by the
Homeowners Association. Maintenance easements
granted are for access by the adjoining
property owners for maintenance of their
structures. All abutter's right of access over
and across the west line of Block 1 and 2 are
hereby granted to the City of Wichita.
Minimum pad elevation shall be 176.0, City of
Wichita datum.

This plat of "Pepperwood Village" has been submitted
to and approved by the Wichita-Sedgwick County Metro-
politan Area Planning Commission, Wichita, Kansas.

Dated this 22nd day of April, 1982

Wichita-Sedgwick County Metropolitan Area Planning
Commission

James L. Galt Chairman
Jack H. Galbraith Assistant Secretary

Willis E. Hartman Susan M. Hartman
Willis E. Hartman Susan M. Hartman

State of Kansas SS
County of Sedgwick

Be it remembered that on this 17th day of
May, 1982 before me, a notary
public in and for said state and county, came
Willis E. Hartman and Susan M. Hartman to me
personally known to be the same persons who exe-
cuted the foregoing instrument of writing and duly
acknowledged the execution of the same. In testi-
mony whereof I have hereunto set my hand and affixed
my notarial seal the day and year above written.

Katharyn Bruman, Notary Public
My Appointment Expires: 2-2-83

We the Fourth National Bank and Trust Co., Wichita
Kansas, mortgagees on the above described property,
except all reserves shown, do hereby consent to the
plat of "Pepperwood Village."

Fourth National Bank and Trust Company
By: *J. D. Newman*
J. D. Newman
Vice President

State of Kansas SS
County of Sedgwick

Be it remembered on this day 17th day of
May, 1982 before me, a notary
public in and for said state and county, came the
Fourth National Bank and Trust Co., by J. D.
Newman, Vice President, to me personally known to be
the same person who executed the foregoing in-
strument of writing and duly acknowledged the exe-
cution of the same. In testimony whereof, I have
hereunto set my hand and affixed my notarial seal
the day and year above written.

Nancy Helton, Notary Public

My Appointment Expires: *4/2/83*

#583927

This plat approved and all dedications shown hereon,
if any accepted by the City Commission of the City
of Wichita, Kansas this 18th day of May,
1982.

Albert J. Kirk Mayor
Donald G. Glick City Clerk

This plat approved and all dedications shown hereon,
if any accepted by the Board of County Commissioners
of Sedgwick County, Kansas, this 26th day of
May, 1982.

Jack Sprack Chairman
Donald H. Cragg Commissioner
Dorothy K. White County Clerk

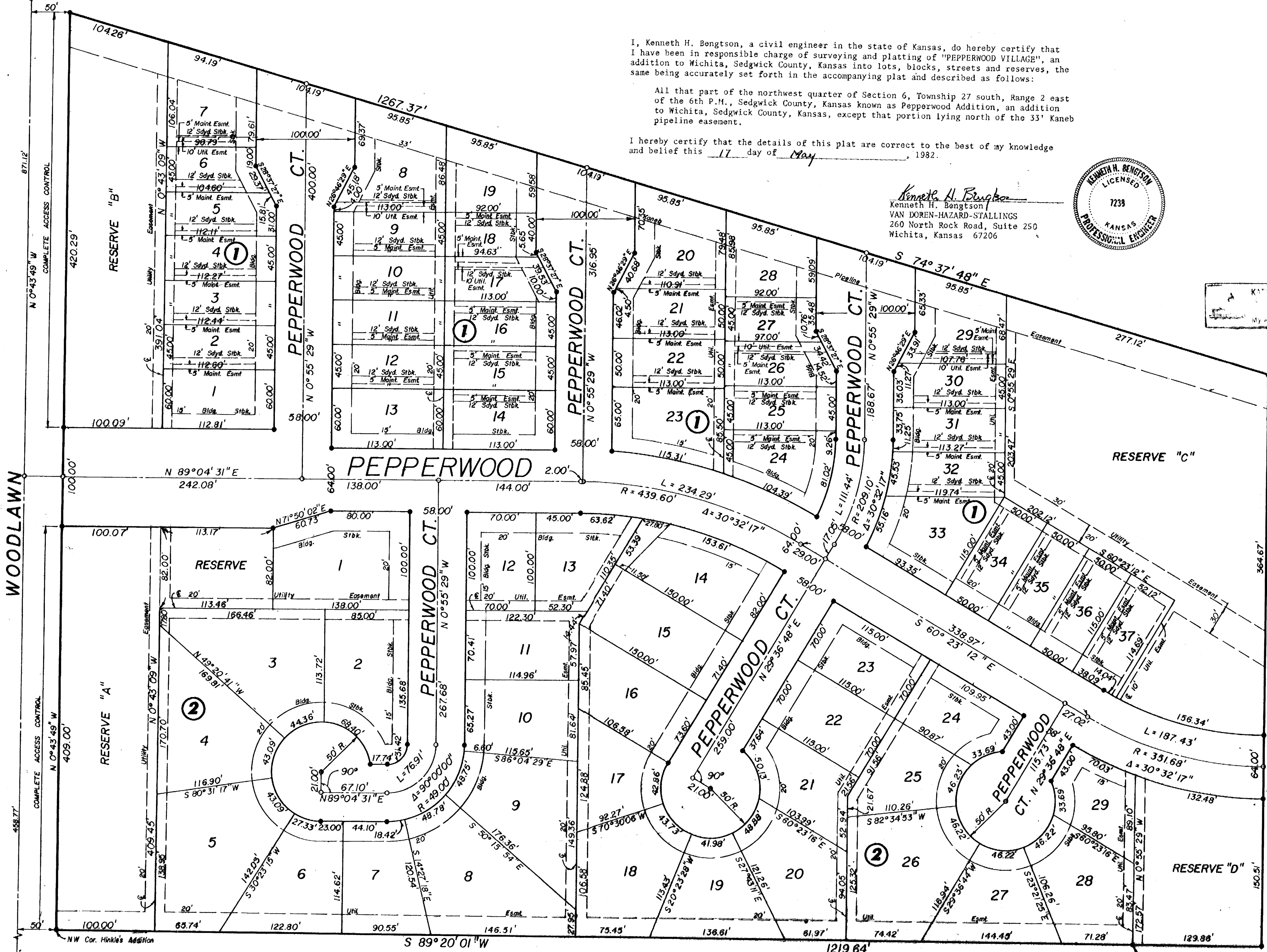
State of Kansas SS
County of Sedgwick

This is to certify that this instrument was filed
for record in the Register of Deeds Office at
11:00 a.m. on the 26th day of MAY,
1982.

Betta F. McCart Register of Deeds
Pat Kettler Deputy
Entered on transfer record this 26th day of
May, 1982.
Dorothy K. White County Clerk

NW Corner
Sec. 6, T27S, R2E

SCALE: 1" = 60'
Min. Pad Elev. = 176.0



W 1/4 Corner
Sec. 6, T27S, R2E

