

PAVING STREETS IN  
**REED'S COVE ADDITION**

**ENTRY PHASE**

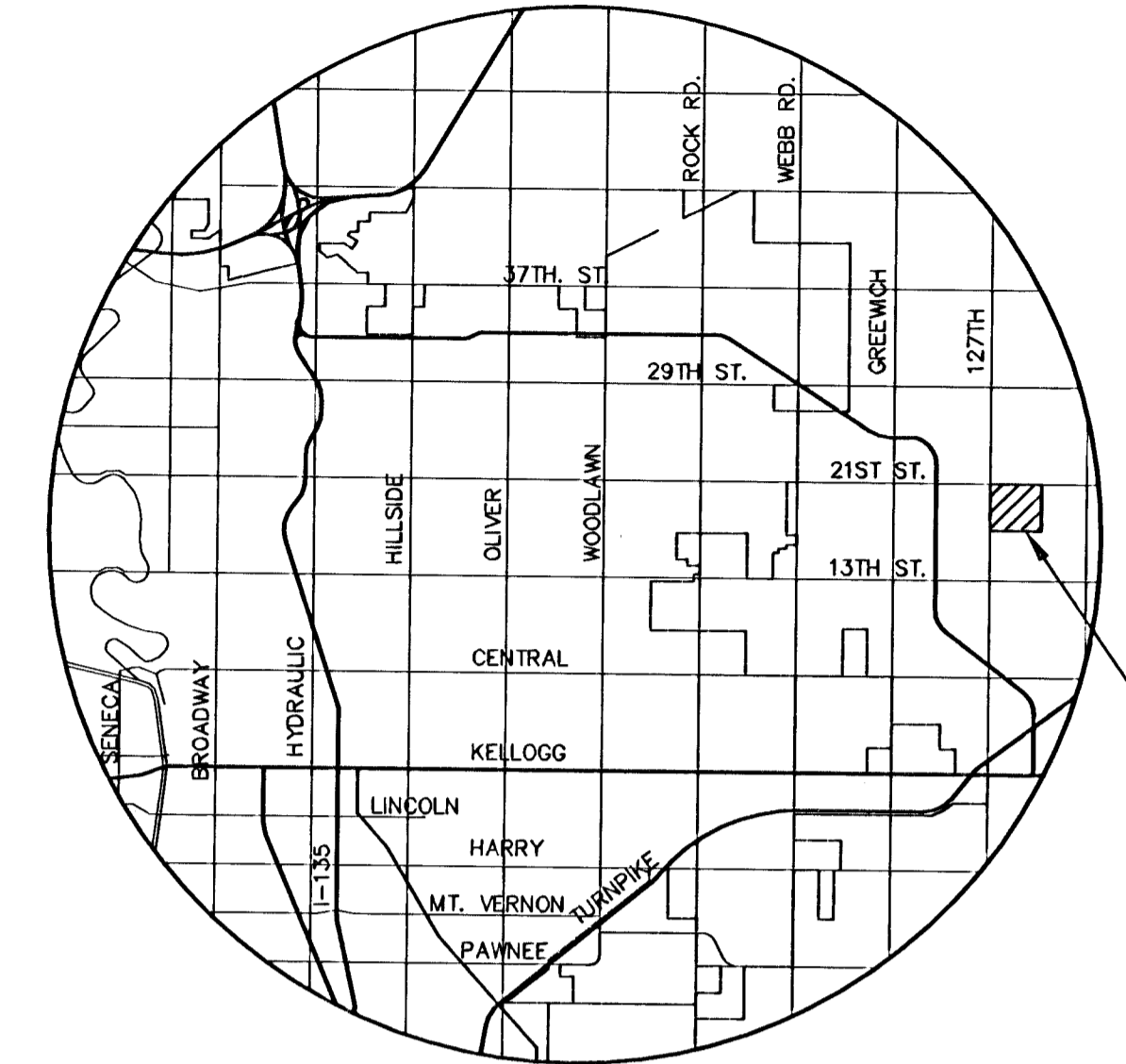
AN ADDITION TO THE CITY OF WICHITA  
 SEDGWICK COUNTY, KANSAS

**PROJECT NO. 472-83760**

NEIL D. CABLE, P.E. - CITY ENGINEER

**OCA - 765796**

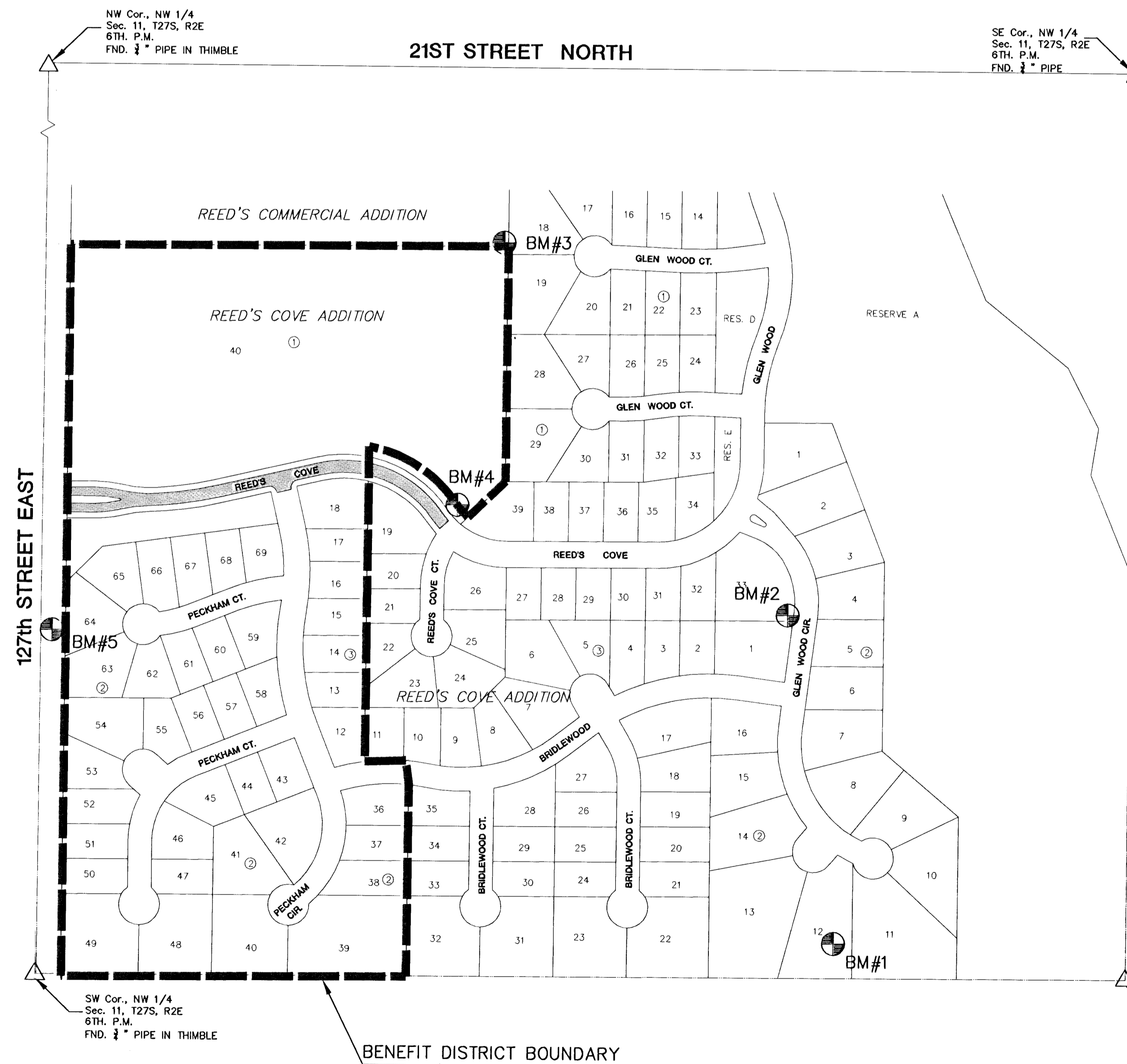
**REED'S COVE: FROM THE EAST LINE OF 127TH STREET EAST TO THE WEST LINE OF REED'S COVE COURT.**



PROJECT SITE

**GENERAL NOTES**

- UNLESS SHOWN OR STATED OTHERWISE ON THESE DRAWINGS, MATERIALS AND CONSTRUCTION SHALL BE IN ACCORDANCE WITH CITY OF WICHITA CONCRETE PAVEMENT AND ASPHALTIC CONCRETE PAVEMENT SPECIFICATIONS.
- CONTRACTOR WILL BE REQUIRED TO PROVIDE A MINIMUM ADVANCE NOTICE OF FORTY-EIGHT (48) HOURS TO UTILITY COMPANIES PRIOR TO STARTING ANY EXCAVATION AS FOLLOWS:  
 KANSAS ONE-CALL 1-800-344-7233  
 OR 687-2470 (LOCAL WICHITA)  
 THE CONTRACTOR MUST NOTIFY THE FOLLOWING IN CASE OF AN EMERGENCY:  
 SBC (TELEPHONE) 800-870-8390  
 COX COMMUNICATIONS (CABLE) 282-0661  
 WESTAR (ELECTRIC) 383-8600  
 KANSAS GAS SERVICE (GAS) 832-3101  
 CITY OF WICHITA WATER & SEWER MAINT. 262-6000  
 AQUILA (GAS) 946-0096
- THE CONTRACTOR SHALL BE RESPONSIBLE FOR PRESERVING PROPERTY IRONS. THE CONTRACTOR WILL BE REQUIRED TO RE-ESTABLISH ANY PROPERTY IRONS WHICH ARE DAMAGED OR DESTROYED BY HIS CONSTRUCTION OPERATIONS. SUCH IRONS SHALL BE RE-ESTABLISHED BY A LICENSED LAND SURVEYOR IN ACCORDANCE WITH STATE LAWS.
- EXISTING UTILITIES AND THEIR LOCATIONS, AS SHOWN ON THE PLANS REPRESENT THE BEST INFORMATION OBTAINABLE FOR DESIGN. LOCATION INFORMATION HAS BEEN OBTAINED FROM THE VARIOUS UTILITY COMPANIES AND IS EITHER FROM COMPANY RECORD DRAWINGS OR COMPANY PROVIDED FIELD LOCATIONS. THE PLAN LOCATIONS SHOWN ARE NOT GUARANTEED. ADDITIONAL EXISTING UTILITIES MAY ALSO BE ENCOUNTERED.
- RUBBLE FROM THE REMOVAL OF MISCELLANEOUS STRUCTURES AND EXCESS EXCAVATION WHICH IS TO BE WASTED SHALL BE DISPOSED OF ON SITES TO BE PROVIDED BY THE CONTRACTOR. THESE SITES SHALL BE APPROVED BY THE ENGINEER AS TO SUITABILITY, APPEARANCE AND SITE LOCATION. LOCATIONS THAT, IN THE OPINION OF THE ENGINEER, WILL LEAVE AN UNSIGHTLY APPEARANCE WILL NOT BE APPROVED. ALL DISPOSAL SITES MUST BE APPROVED BY THE KANSAS DEPARTMENT OF HEALTH AND ENVIRONMENT. MATERIAL EITHER STOCKPILED OR DISPOSED OF IN A FLOOD PLAIN WOULD REQUIRE A KANSAS STATE BOARD OF AGRICULTURE PERMIT. ANY MATERIAL DUMPED IN WATERS OF THE UNITED STATES OR WETLANDS IS SUBJECT TO U.S. CORPS OF ENGINEERS PERMITTING REGULATIONS. ANY MATERIAL BURIED OR STOCKPILED BEYOND APPROVED CONSTRUCTION LIMITS WOULD REQUIRE ADDITIONAL ARCHAEOLOGICAL INVESTIGATIONS UNLESS BURIED IN A PREVIOUSLY APPROVED BORROW LOCATION.
- TRANSITION CURB FROM FULL HEIGHT COMBINATION CURB AND GUTTER TO ROLL TYPE COMBINATION CURB AND GUTTER IS TO BE PAID AS BID FOR LINEAL FEET COMBINED CURB AND GUTTER (3 5/8" ROLL).
- A SAW CUT OF AT LEAST ONE-HALF THE DEPTH OF THE EXISTING SURFACE COURSES OR ONE-FOURTH THE DEPTH OF THE EXISTING TOTAL PAVEMENT THICKNESS SHALL BE PROVIDED AT LOCATIONS WHERE PROPOSED CONSTRUCTION ABUTS AN EXISTING SURFACE OR PAVEMENT FOR WHICH PARTIAL REMOVAL OF THAT SURFACE OR PAVEMENT IS REQUIRED. SAW JOINT TO FACILITATE REMOVAL WITHIN THREE (3) FEET OF EXISTING JOINTS WILL NOT BE PERMITTED AND FOR SUCH INSTANCES THE LIMITS OF REMOVAL SHALL EXTEND TO THE EXISTING JOINT. SUCH SAW CUTS WILL NOT BE PAID FOR DIRECTLY AND THIS COST SHALL BE CONSIDERED AS SUBSIDIARY TO THE REMOVAL OF SURFACE OR PAVEMENT.
- ALL DISTURBED AREAS SHALL BE SEEDED AND MULCHED. SEEDING SHALL BE RYE GRASS AT A RATE OF 200 LBS PER ACRE.



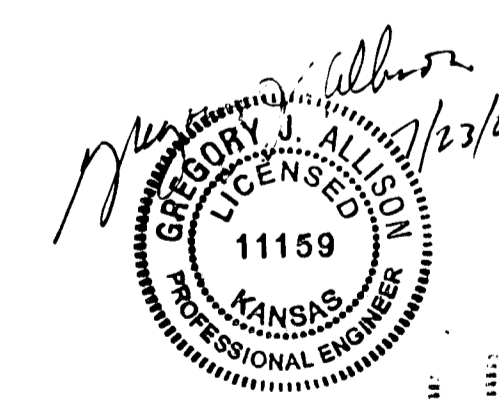
**INDEX TO DRAWINGS**

SHEET NO.	DESCRIPTION
1	TITLE SHEET
2	TYPICAL PAVING SECTION
3	VALLEY GUTTER DETAILS
4	WHEELCHAIR RAMP DETAILS
5	INLET HOOKUP DETAILS
6	SIGNING DETAILS
7-8	REED'S COVE ST. PAVING
9-11	BMP DETAILS
12-16	CROSS SECTIONS
17-18	FINAL PLAT

**BENCHMARKS**

- BM 1 1356.100 RR SPIKE IN N. FACE N. H-POLE, 4TH H-POLE EAST OF 127TH ST. EAST, 1940'+/- E. & 86'+/- NORTH OF W 1/4 COR SEC 11, T 27 S, R 2 E.
- BM 2 1354.300 "T" POST 15'+/- N. & 15'+/- W. OF SE COR LOT 1 BLOCK 3, REED'S COVE.
- BM 3 1363.37 "T" POST 10'+/- N. & 10'+/- W. OF SE COR LOT 1, BLOCK 1, REED'S COMMERCIAL (NE COR LOT 40, BLOCK 1, REED'S COVE).
- BM 4 1368.12 "T" POST 10'+/- NE OF PC ON SOUTH SIDE LOT 40 BLOCK 1, REED'S COVE, 49' +/- NW OF SW COR LOT 39, BLOCK 1.
- BM 5 1364.990 RR SPIKE IN W. FACE 4TH PP NORTH OF RR TRACKS ON EAST SIDE OF 127TH ST. EAST, 837'+/- NORTH & 27'+/- EAST OF W COR SEC 11, T 27 S, R 2 E.

SCALE: 1" = 200'



H:\DWG\02121\DMG\PAV\ENTRY\021211\_ET

**MKEC**  
ENGINEERING  
CONSULTANTS  
411 N. WEBB ROAD  
WICHITA, KS. 67206  
316-694-9600

**REED'S COVE ADDITION**  
PROJECT NAME

**PAVING PLANS - ENTRY PHASE**  
SHEET TITLE

DATE: **JULY 2003**  
JOB NO.: **02121\_ET**

DESIGN BY: **DFL**  
DRAWN BY: **KKL/DMU**  
CHECKED BY: **DFL**

**1 / 18**  
SHEET/OF