

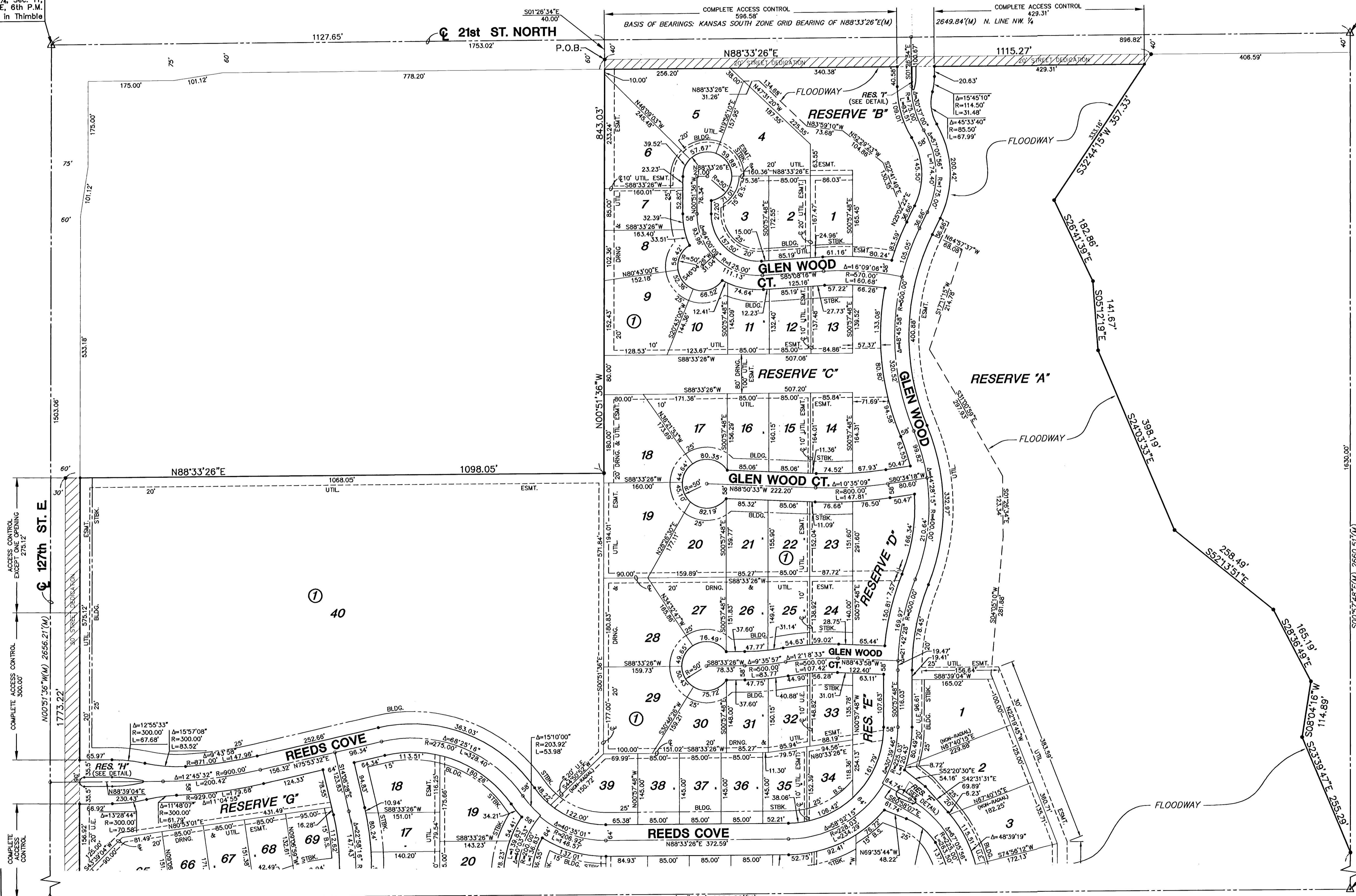
FINAL PLAT

REED'S COVE ADDITION

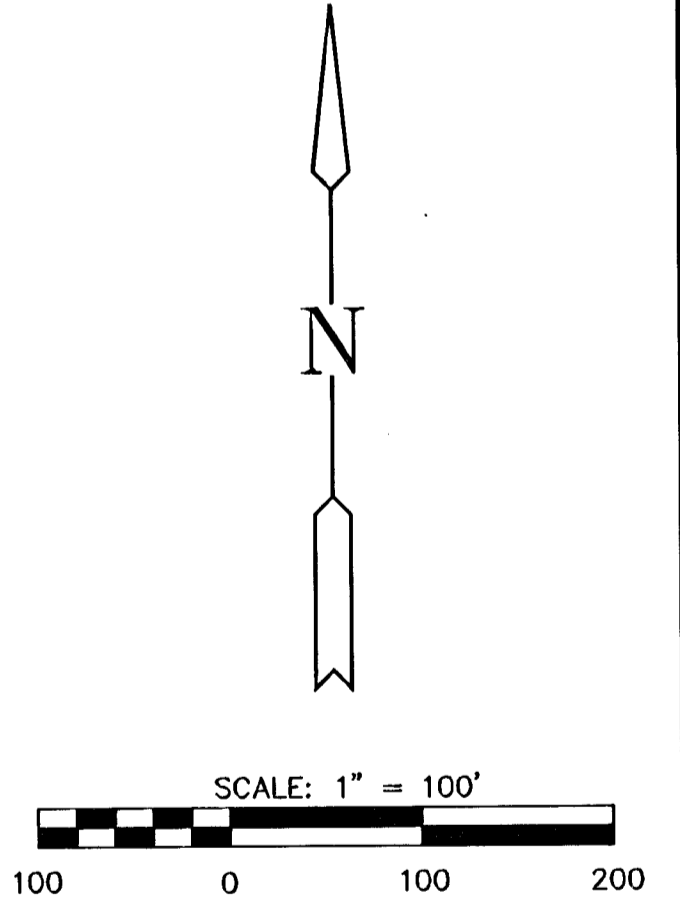
AN ADDITION TO WICHITA, SEDGWICK COUNTY, KANSAS

NW. Cor., NW ¼, Sec. 11,
T27S, R2E, 6th P.M.
Fnd. ¾" Pipe in Thimble

NE. Cor., NW ¼, Sec. 11,
T27S, R2E, 6th P.M.
Fnd. ¾" Pipe



MINIMUM PAD ELEVATIONS (LOWEST OPENINGS)			
LOT	BLOCK	ELEVATION (CITY DATUM)	ELEVATION (USGS)
1	1	166.1	1353.5
2	1	166.1	1353.5
4	1	166.1	1353.5
5	1	166.1	1353.5
9	1	169.6	1357.0
10	1	169.1	1356.5
11	1	168.1	1355.5
12	1	168.1	1355.5
13	1	166.6	1354.0
14	1	166.6	1354.0
15	1	168.1	1355.5
16	1	168.1	1355.5
17	1	169.1	1356.5
18	1	169.6	1357.0
1	2	165.6	1353.0
2	2	165.6	1353.0
3	2	165.6	1353.0
4	2	165.6	1353.0
5	2	165.6	1353.0
6	2	165.6	1353.0
7	2	165.6	1353.0
8	2	163.6	1351.0
9	2	160.8	1348.2
10	2	160.7	1348.1



- LEGEND**
- △ = SECTION CORNER MONUMENT FOUND
 - ⊙ = FOUND PROPERTY CORNER REBAR
 - = SET 5/8" REBAR W/ MKEC CLS #39 CAP
 - B.S. = BUILDING SETBACK
 - U.E. = UTILITY EASEMENT
 - (M) = MEASURED DIMENSION

SW. Cor., NW ¼,
Sec. 11, T27S, R2E,
6th P.M., Fnd. ¾"
Pipe in Thimble

SE. Cor., NW ¼, Sec. 11,
T27S, R2E, 6th P.M.
Fnd. Stone