

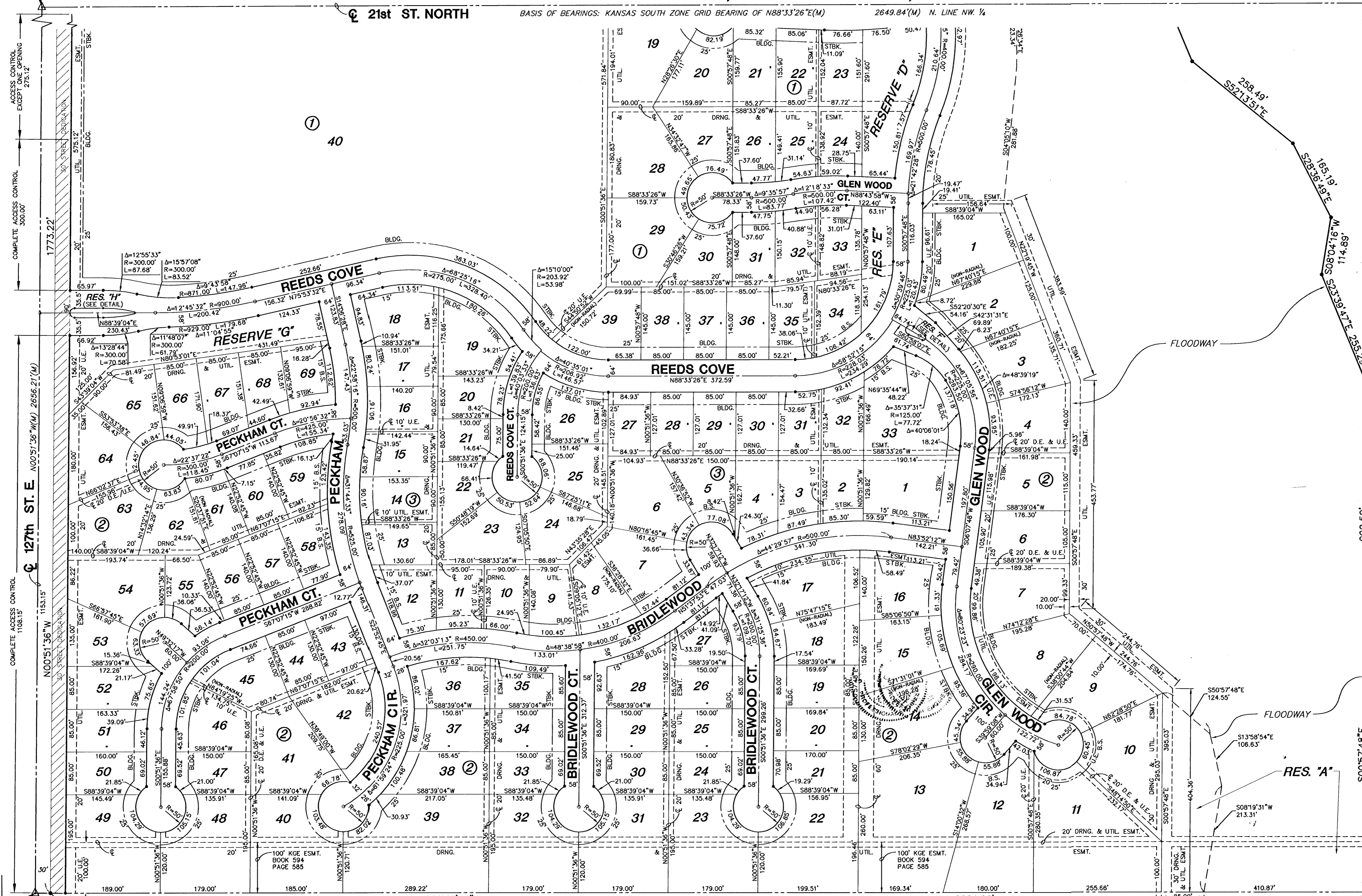
FINAL PLAT

REED'S COVE ADDITION

AN ADDITION TO WICHITA, SEDGWICK COUNTY, KANSAS

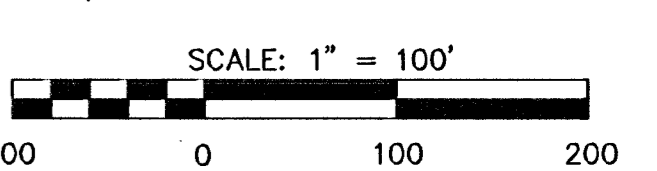
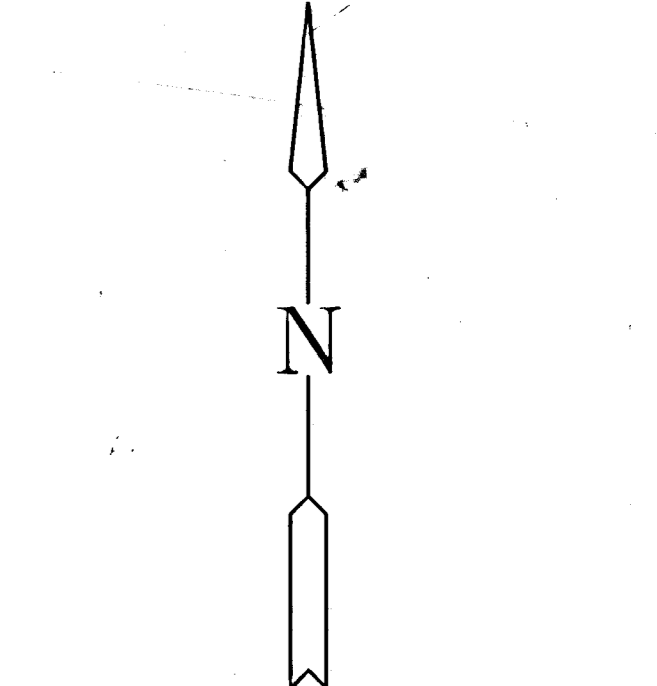
NW. Cor., NW ¼, Sec. 11,
T27S, R2E, 6th P.M.
Fnd. ¾" Pipe in Thimble

NE. Cor., NW ¼, Sec. 11,
T27S, R2E, 6th P.M.
Fnd. ¾" Pipe



MINIMUM PAD ELEVATIONS (LOWEST OPENINGS)			
LOT	BLOCK	ELEVATION (CITY DATUM)	ELEVATION (USGS)
1	1	166.1	1353.5
2	1	166.1	1353.5
4	1	166.1	1353.5
5	1	166.1	1353.5
9	1	169.6	1357.0
10	1	169.1	1356.5
11	1	168.1	1355.5
12	1	168.1	1355.5
13	1	166.6	1354.0
14	1	166.6	1354.0
15	1	168.1	1355.5
16	1	168.1	1355.5
17	1	169.1	1356.5
18	1	169.6	1357.0
1	2	165.6	1353.0
2	2	165.6	1353.0
3	2	165.6	1353.0
4	2	165.6	1353.0
5	2	165.6	1353.0
6	2	165.6	1353.0
7	2	165.6	1353.0
8	2	163.6	1351.0
9	2	160.8	1348.2
10	2	160.7	1348.1

NOTE
Please contact Westar Energy (or its successor) Electric Transmission Engineering Department (currently 785-575-8167) before conducting any proposed construction activities that could place people, equipment, or facilities within Westar Energy easement shown on this plat, designated as Book 594, Page 585 dated January 3, 1967.



- LEGEND**
- △ = SECTION CORNER MONUMENT FOUND
 - ⊙ = FOUND PROPERTY CORNER REBAR
 - = SET 5/8" REBAR W/ MKEC CLS #39 CAP
 - B.S. = BUILDING SETBACK
 - U.E. = UTILITY EASEMENT
 - (M) = MEASURED DIMENSION

SW. Cor., NW ¼,
Sec. 11, T27S, R2E,
6th P.M., Fnd. ¾"
Pipe in Thimble

SE. Cor., NW ¼, Sec. 11,
T27S, R2E, 6th P.M.
Fnd. Stone