

# STREET PAVING FOR DORIS & INCIDENTAL SWS IMPROVEMENTS

to serve

## STEVE KELLEY 5TH ADDITION

Clara St., from the east line of Doris Street,  
east and south to the south line of the plat  
Doris St., from the south line of 13th  
Street North to the south line of the plat

CITY OF WICHITA, KANSAS  
James L. Armor, P.E. Acting City Engineer

Project Number

**472-83993**

O.C.A. Number:

**765875**

### GENERAL NOTES:

- Contractor will be required to provide notice to utility companies a minimum of twenty-four (24) hours prior to any excavation, as follows:  

Kansas One-Call	687-2470
-----------------	----------

The Contractor must notify the following in case of an emergency:

Cox Communications	262-4270
Kansas Gas Service	1-888-482-4950
Westar Energy	383-8650
Aquila Energy	1-800-303-0357
SBC	268-2245
City of Wichita Water Dept.	268-4563
City of Wichita Sewer Maint.	268-4024
City of Wichita Storm Sewer Maint.	268-4090
City of Wichita Traffic Maint.	268-4034
Conoco Pipeline Co.	1-800-231-2551
Southern Star Pipeline Co.	529-6600
Phillips Pipeline Co.	1-800-766-8230
Jayhawk Pipeline Co.	1-888-542-9575
- Utility service lines, poles, valve boxes, meters, and etcetera are to be adjusted as necessary by others prior to construction unless the plans specifically call for their adjustment by the Contractor or unless the plans specifically identify a utility to be adjusted by its owner during construction. Existing utilities and their location, as shown on the plans, represent the best information obtainable for design. The Contractor will be required to work around existing utilities within the right-of-way which do not conflict with proposed construction.
- Rubble from the removal of miscellaneous structures and excess excavation which is to be wasted shall be disposed of on sites to be provided by the Contractor. These sites shall be approved by the Engineer as to suitability, appearance and site location. Locations, in the opinion of the Engineer, will leave an unsightly appearance will not be approved. All disposal sites must be approved by the Kansas Department of Health and Environment. Material either stockpiled or disposed of in a flood plain would require a Kansas State Board of Agriculture permit. Any material dumped in waters of the United States or wetlands is subject to U.S. Corps. of Engineers permitting regulations. Any material buried or stockpiled beyond approved construction limits would require additional archaeological investigations unless buried in a previously approved borrow location.
- Trees and shrubs in public right-of-way which are in direct conflict with proposed new construction shall be removed by the Contractor with the Engineer's approval. Trees and shrubs which are not in direct conflict with proposed new construction shall be saved and protected from damage.
- The Contractor shall give all property owners and/or tenants of developed property abutting the construction of this project a minimum of ten (10) days advance notice prior to start of construction.
- The Contractor shall be responsible for preserving property irons. The Contractor will be required to re-establish any property irons which are damaged or destroyed by his construction operations. Such irons shall be re-established by a licensed land surveyor in accordance with state laws.
- All existing and proposed erosion control measures including silt fencing, erosion control mat, straw bales, inlet barriers, and const. entrance shall be maintained throughout construction by the contractor and until project is accepted by the City of Wichita. The on-site engineer shall complete weekly reports on the status of erosion control measures. The contractor shall be required to comply with maintenance and/or replacement of erosion control measures as determined by the on-site engineer until project is accepted by City of Wichita. Maintenance and/or replacement of erosion control measures to be paid by L.S. bid item "Erosion Control BMP's."
- The contractor shall adjust valve boxes as necessary to match proposed grade. Cost to be included in bid item, "Site Clearing & Restoration."
- All excess excavation shall remain on-site and be stockpiled at a location determined by the engineer.
- All areas disturbed during construction within Reserves and Street R/W's shall be seeded, mulched, and fertilized as follows unless otherwise noted (Permanent Seeding):  

Seed:	Kansas Premium Fescue Blend: 8 lbs./1000 sq. ft.
Mulch:	Prairie Hay: 2 tons/acre
Fertilizer:	12-24-12: 850 lbs./acre

All other areas disturbed during construction shall be seeded and mulched as follows (Temporary Seeding):  

Seed:	Rye Grass: 5 lbs./1000 Sq. Ft.
Mulch:	Prairie Hay: 2 tons/acre

All costs associated with seeding, mulching, and fertilizing shall be included in bid item "Project Seeding." All seeding operations shall conform to City of Wichita Standard Specifications.

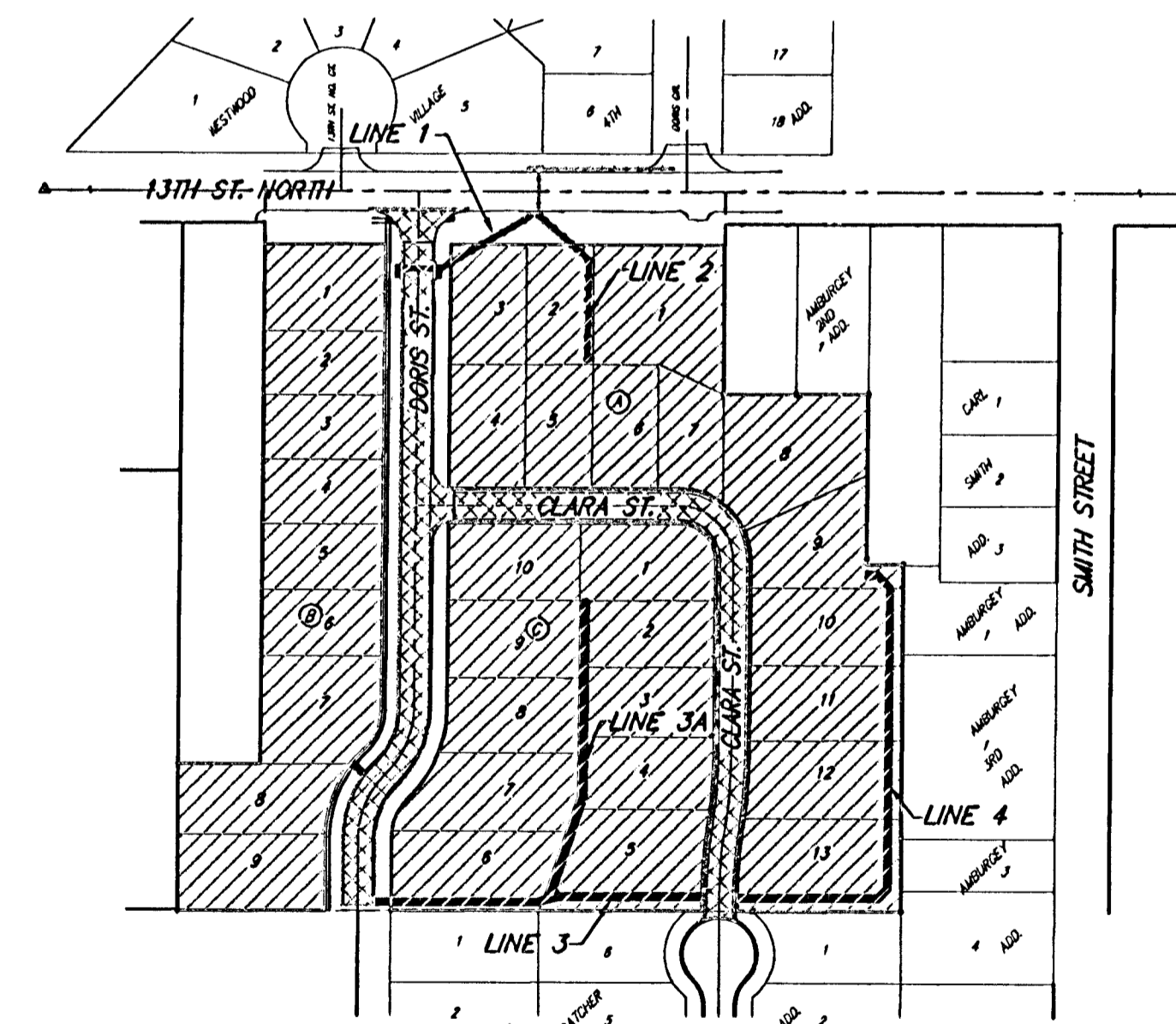
### Benchmarks

City of Wichita Benchmark.  
Centerline of Curtis extended.  
2' South of south property line of I-235 R/W. 21' West of pole line extended south. 74' North Northwest of street light pole. 68' West of chain link fence corner.  
Elev. = 129.15 (City Datum)  
Elev. = 1316.55 (N.G.V.D.29)

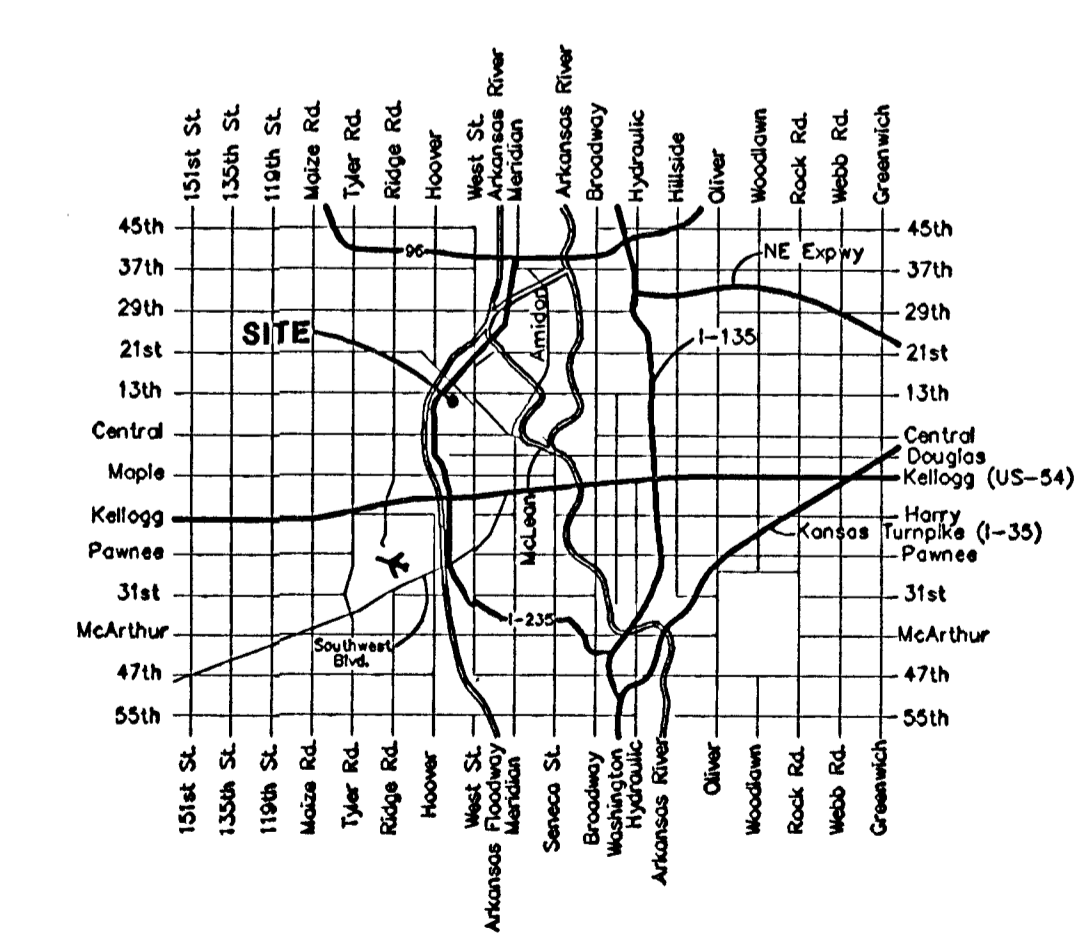
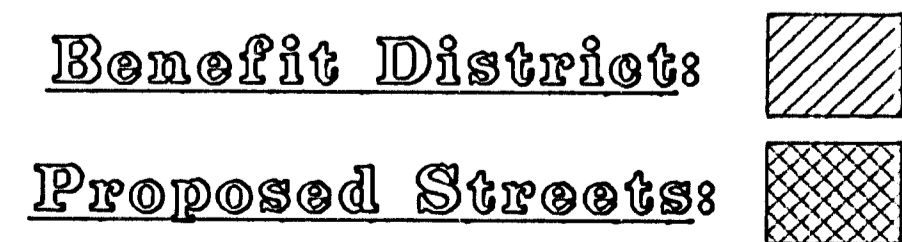
Site Benchmark  
"□" North side 13th Street  
North, centerline face of inlet between Doris and Doris Ct.  
Elev. = 131.13

### Sheet Index

Title Sheet	1
31' Pavement Detail	2
29' Pavement Detail	3
Sign Detail	4
Miscellaneous Details	5
Doris	6-7
Clara	8-9
SWS Lines 1 & 2	10
Flume Line 3	11
Flume Line 3A	12
Flume Line 4	13
Std. Type 1A Double Inlet Detail	14
Special Shallow Manhole Detail	15
Ring and Lid Detail	16
Special Yard Inlet Detail	17
Easement Grading Plan	18
Erosion Control Details	19-22
Street X-Sections	23-24
Copy of Plat	25



**Project Earthwork Totals \***  
 Excavation = 243 C.Y.  
 Loose Fill = 1,814 C.Y.  
 Compacted Fill = 2,819 C.Y.  
 \* Does not include earthwork quantities associated with Easement Grading  
**Total Project Length**  
 1,307 L.F. = 0.25 Miles



Vicinity Map

