

BENCHMARK
 City of Wichita Benchmark
 Centerline of Curtis extended.
 2' South of south property line
 of 1-235 R/W. 21' West of
 pole line extended south. 74'
 North Northwest of street light
 pole. 68' West of chain link
 fence corner.
 Elev. = 129.15 (City Datum)
 Elev. = 1316.55 (N.G.V.D.29)

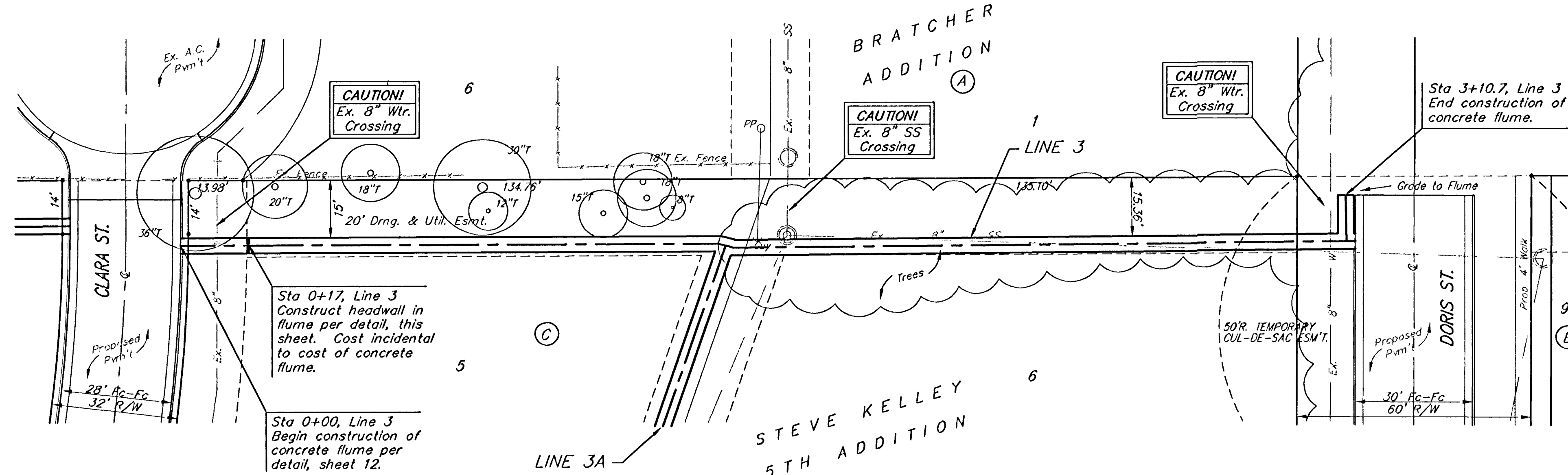
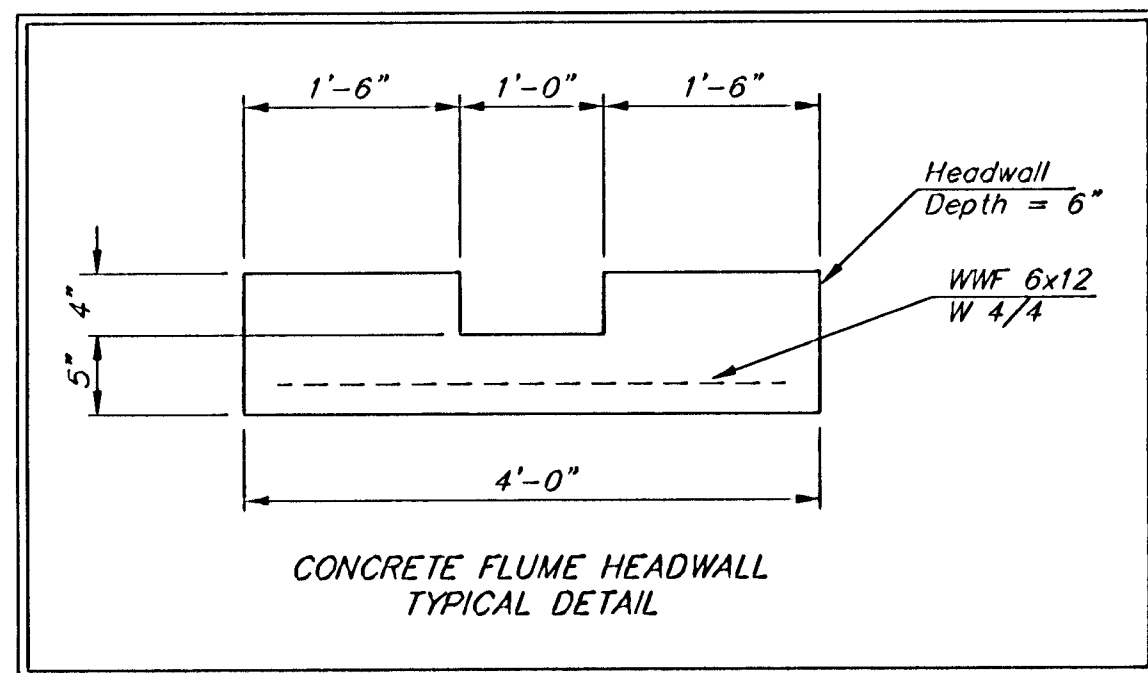
Site Benchmark
 "□" North side 13th Street
 North, centerline face of inlet
 between Doris and Doris Ct.
 Elev. = 131.13

NOTE:
 Plans show sporadic areas of concrete, asphalt
 pavement and gravel on site. When constructing
 the proposed street, the Contractor shall remove
 these items and store them on site. Only place
 that any of these materials shall be replaced are
 along the the house and the bar, if there is
 damage. Removal and any replacement of
 concrete, asphalt pavement and gravel due to
 the construction of the streets shall be incidental
 to the bid item "Site Clearing and Restoration".

NOTE:
 Groove flume longitudinally every
 4 feet. Install expansion joint
 every 100 feet.

NOTE:
 Plans show trees that were existing at time of
 design. Developer has been removing trees on
 site. Therefore, the Contractor shall visit site
 and make own determination of tree removal
 needs. Some trees have been topped, but their
 trunks and roots are still in the ground.
 Removal of trees due to the construction of
 streets shall be incidental to the bid item "Site
 Clearing and Restoration".

Scale: 1" = 20' Horizontal
 1" = 5' Vertical
 • = Iron



NOTE:
 The following is a summary of the conditions of
 the existing utilities that are on the entire site.

Electrical: Almost all electrical is overhead and
 still active. Power is still being supplied to the
 Bar and the house east of the Bar. According
 to developer, all drops on the power poles have
 been disconnected and therefore any service lines
 should be moveable.

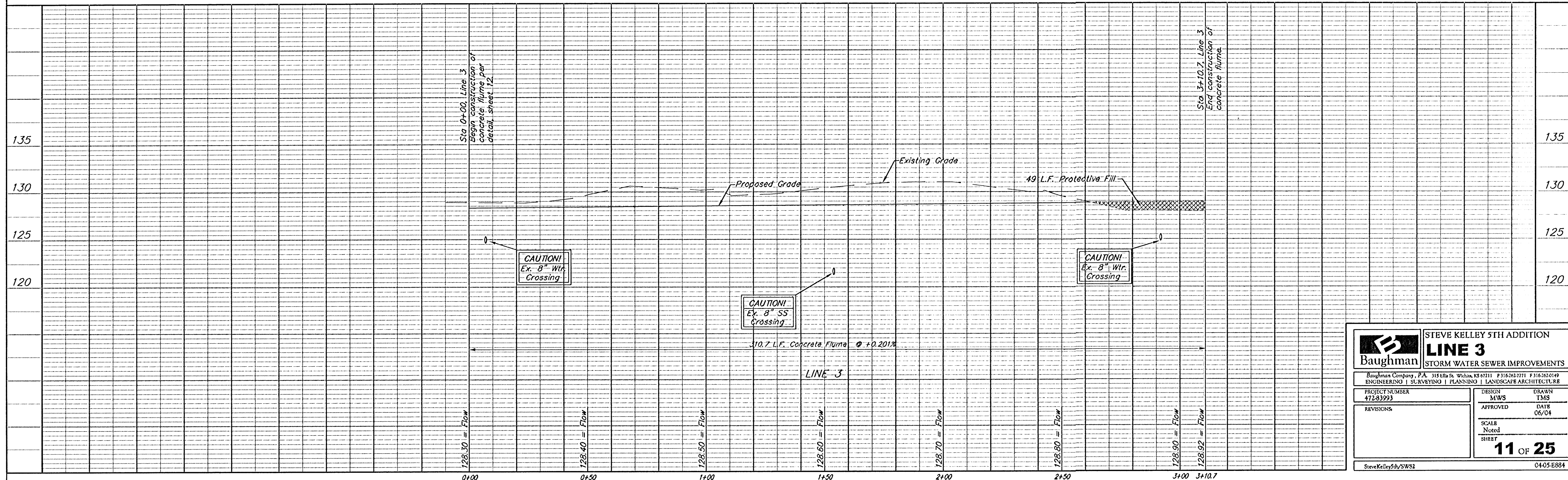
Gas: The gas has been disconnected at the
 main. All the interior service lines therefore
 should be abandoned. When excavating through
 a service line, some gas may escape due to
 being trapped in a bend.

Water: The water has been turned off, but not
 for sure if it has been disconnected from the
 main. Caution should be used when passing
 next to or through a water service line. Check
 with Engineer at time of construction to see if
 water has been disconnected.

SWR: At this time, no word on the status of
 the phone lines. Contractor to call Engineer.

Sanitary Sewer: There are two laterals that will
 need to be reconnected to Line 1 after it has
 been installed. These laterals are for the Bar
 and the house east of the Bar.

The above information is from the Developer. If
 the Contractor has any questions, please call the
 Design Engineer and we will help out.



Baughman		STEVE KELLEY 5TH ADDITION	
LINE 3		STORM WATER SEWER IMPROVEMENTS	
Baughman Company, P.A. 315 Ellis St. Wichita, KS 67211 P 316-262-7711 F 316-262-0149 ENGINEERING SURVEYING PLANNING LANDSCAPE ARCHITECTURE			
PROJECT NUMBER 472-83993	DESIGN MWS	DRAWN TMS	
REVISIONS:	APPROVED	DATE 06/04	
	SCALE Noted SHEET	11 OF 25	
SteveKelley5th/SWS2		0405-E884	