

**BENCHMARK**  
 City of Wichita Benchmark,  
 Centerline of Curtis extended,  
 2' South of south property line  
 of 1-235 R/W. 21' West of  
 pole line extended south. 74'  
 North Northwest of street light  
 pole. 68' West of chain link  
 fence corner.  
 Elev. = 129.15 (City Datum)  
 Elev. = 1316.55 (N.G.V.D.29)

**Site Benchmark**  
 "□" North side 13th Street  
 North, centerline face of inlet  
 between Doris and Doris Ct.  
 Elev. = 131.13

**NOTE:**  
 The following is a summary of the conditions of  
 the existing utilities that are on the entire site.

**Electrical:** Almost all electrical is overhead and  
 still active. Power is still being supplied to the  
 Bar and the house east of the Bar. According  
 to developer, all drops on the power poles have  
 been disconnected and therefore any service lines  
 should be moveable.

**Gas:** The gas has been disconnected at the  
 main. All the interior service lines therefore  
 should be abandoned. When excavating through  
 a service line, some gas may escape due to  
 being trapped in a bend.

**Water:** The water has been turned off, but not  
 for sure if it has been disconnected from the  
 main. Caution should be used when passing  
 next to or through a water service line. Check  
 with Engineer at time of construction to see if  
 water has been disconnected.

**SWR:** At this time, no word on the status of  
 the phone lines. Contractor to call Engineer.

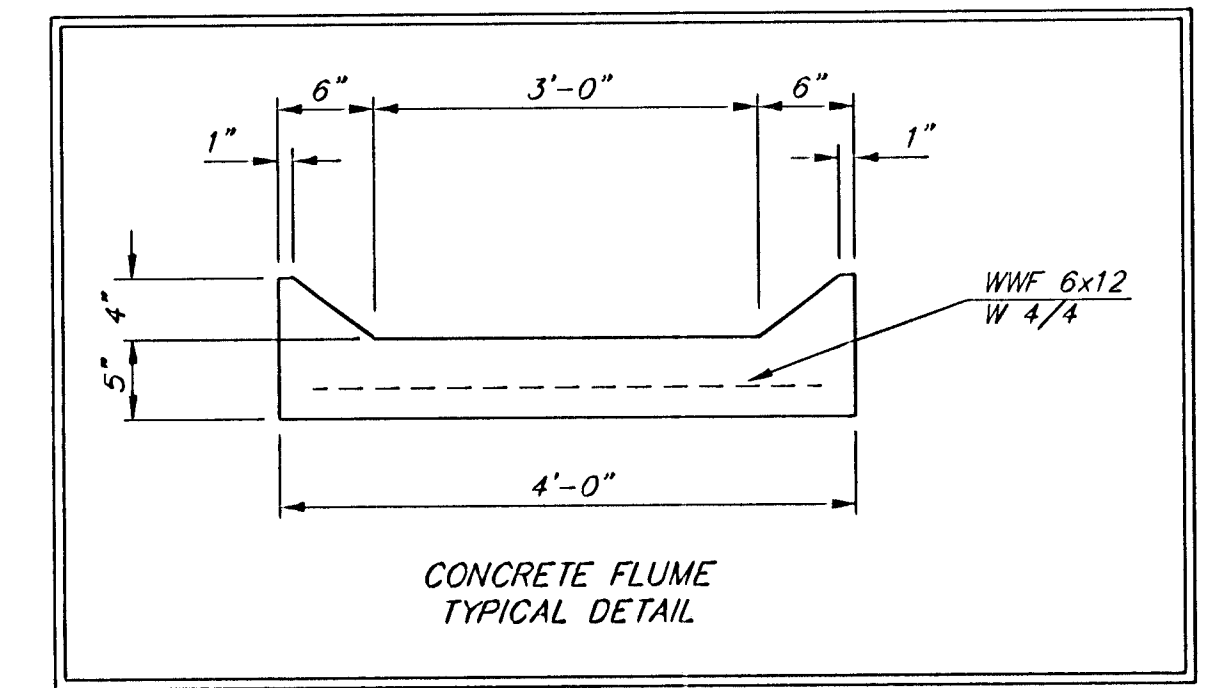
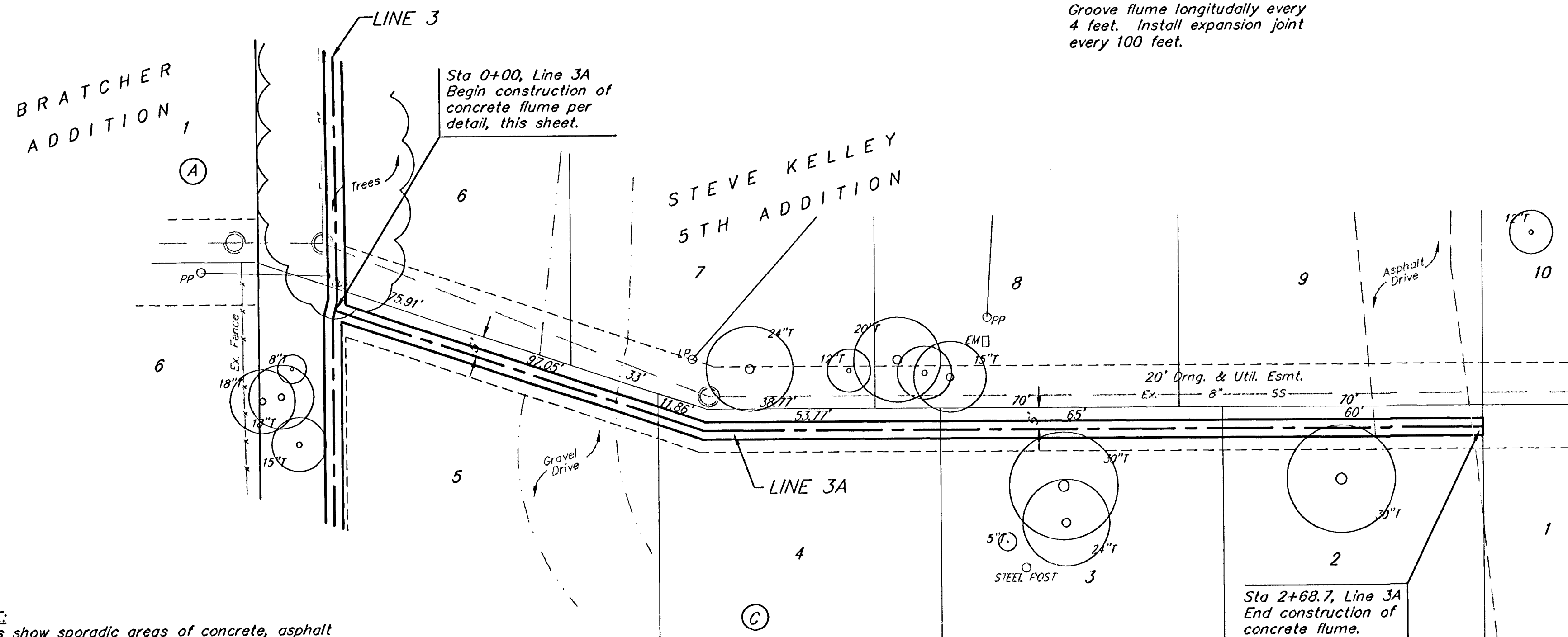
**Sanitary Sewer:** There are two laterals that will  
 need to be reconnected to Line 1 after it has  
 been installed. These laterals are for the Bar  
 and the house east of the Bar.

The above information is from the Developer. If  
 the Contractor has any questions, please call the  
 Design Engineer and we will help out.

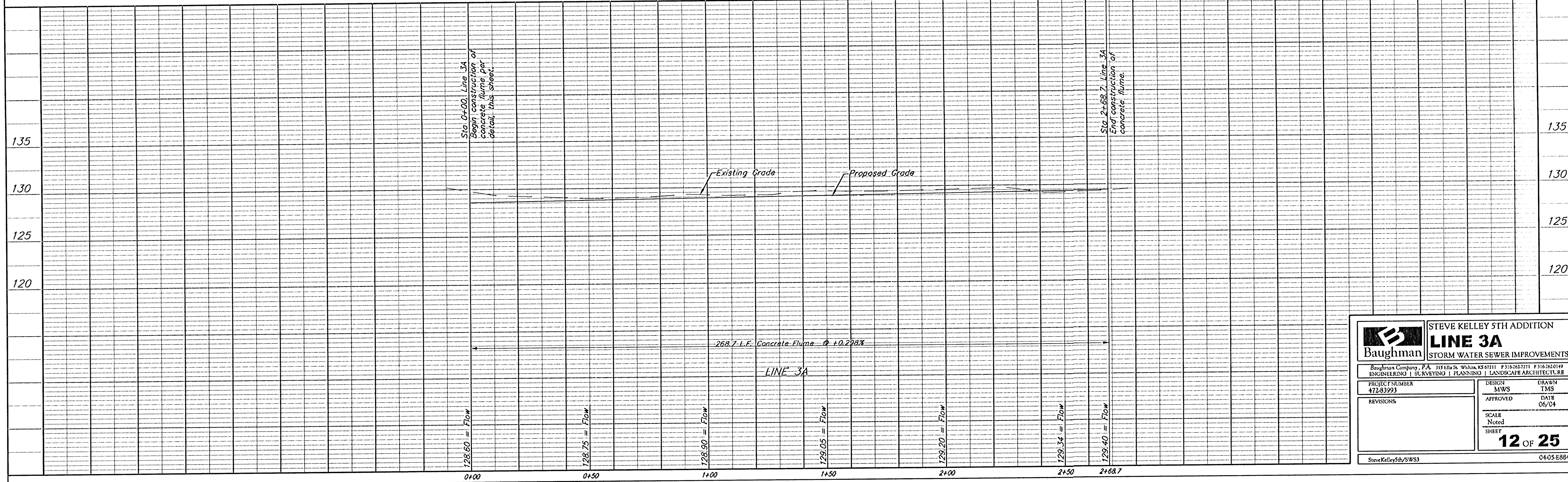
**NOTE:**  
 Plans show sporadic areas of concrete, asphalt  
 pavement and gravel on site. When constructing  
 the proposed street, the Contractor shall remove  
 these items and store them on site. Only place  
 that any of these materials shall be replaced are  
 along the the house and the bar, if there is  
 damage. Removal and any replacement of  
 concrete, asphalt pavement and gravel due to  
 the construction of the streets shall be incidental  
 to the bid item "Site Clearing and Restoration".

**NOTE:**  
 Groove flume longitudinally every  
 4 feet. Install expansion joint  
 every 100 feet.

Scale: 1" = 20' Horizontal  
 1" = 5' Vertical  
 • = Iron



**NOTE:**  
 Plans show trees that were existing at time of  
 design. Developer has been removing trees on  
 site. Therefore, the Contractor shall visit site  
 and make own determination of tree removal  
 needs. Some trees have been toppled, but their  
 trunks and roots are still in the ground.  
 Removal of trees due to the construction of  
 streets shall be incidental to the bid item "Site  
 Clearing and Restoration".



<b>Baughman</b>		<b>STEVE KELLEY 5TH ADDITION</b>	
<b>LINE 3A</b>		<b>STORM WATER SEWER IMPROVEMENTS</b>	
Baughman Company, P.A. 315 Hill St. Wichita, KS 67211 P 316-262-7711 F 316-262-0199			
ENGINEERING   SURVEYING   PLANNING   LANDSCAPE ARCHITECTURE			
PROJECT NUMBER 472-83993	DESIGN MWS	DRAWN TMS	
REVISIONS	APPROVED	DATE 06/04	
	SCALE Noted	SHEET	<b>12 OF 25</b>
SteveKelley5th/WS3			04-05-E884