

PAVING AND INCIDENTAL DRAINAGE IN FOX RIDGE ADDITION PHASE 8

AN ADDITION TO THE CITY OF WICHITA
SEDGWICK COUNTY, KANSAS
PROJECT NO. 472-84025

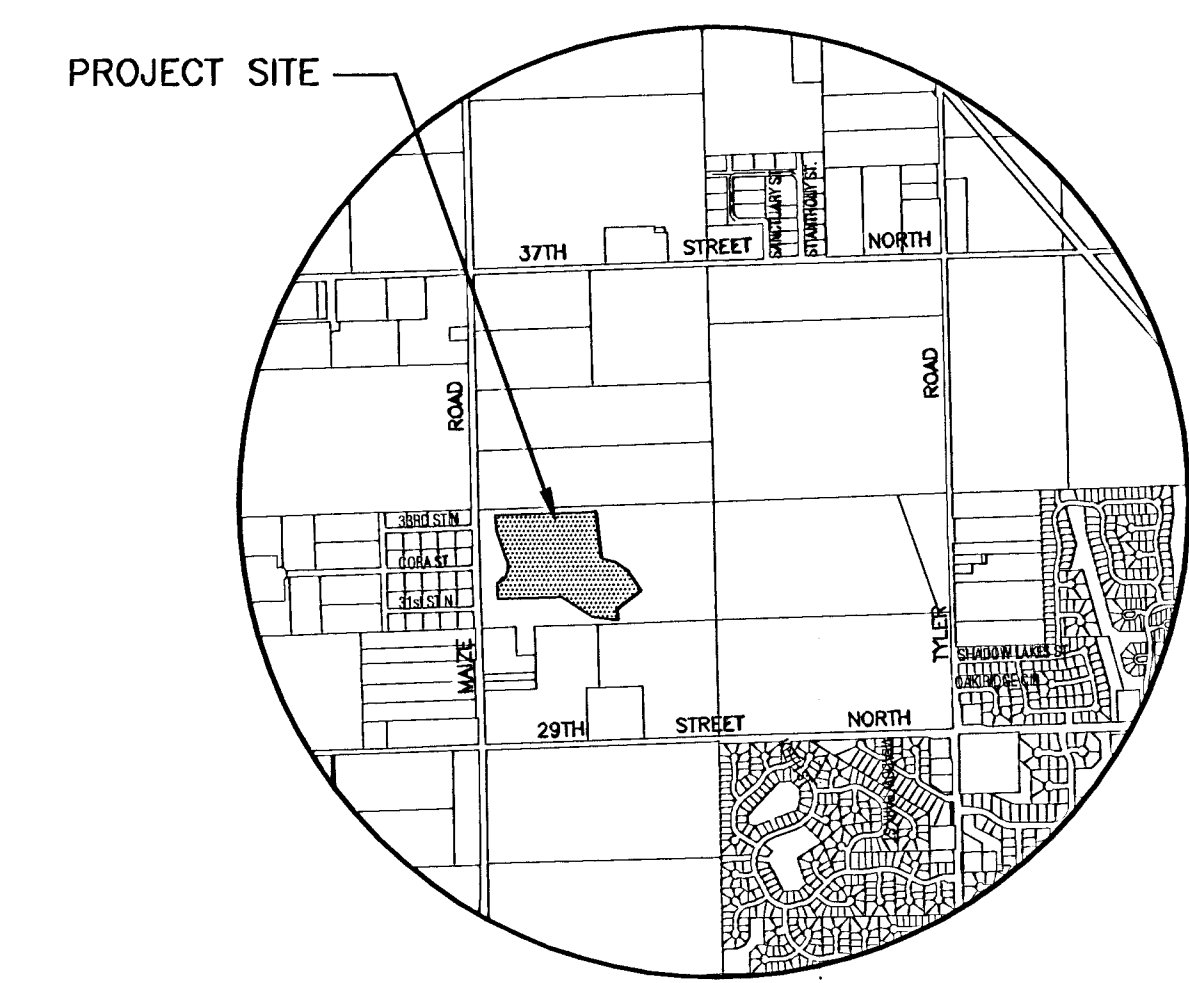
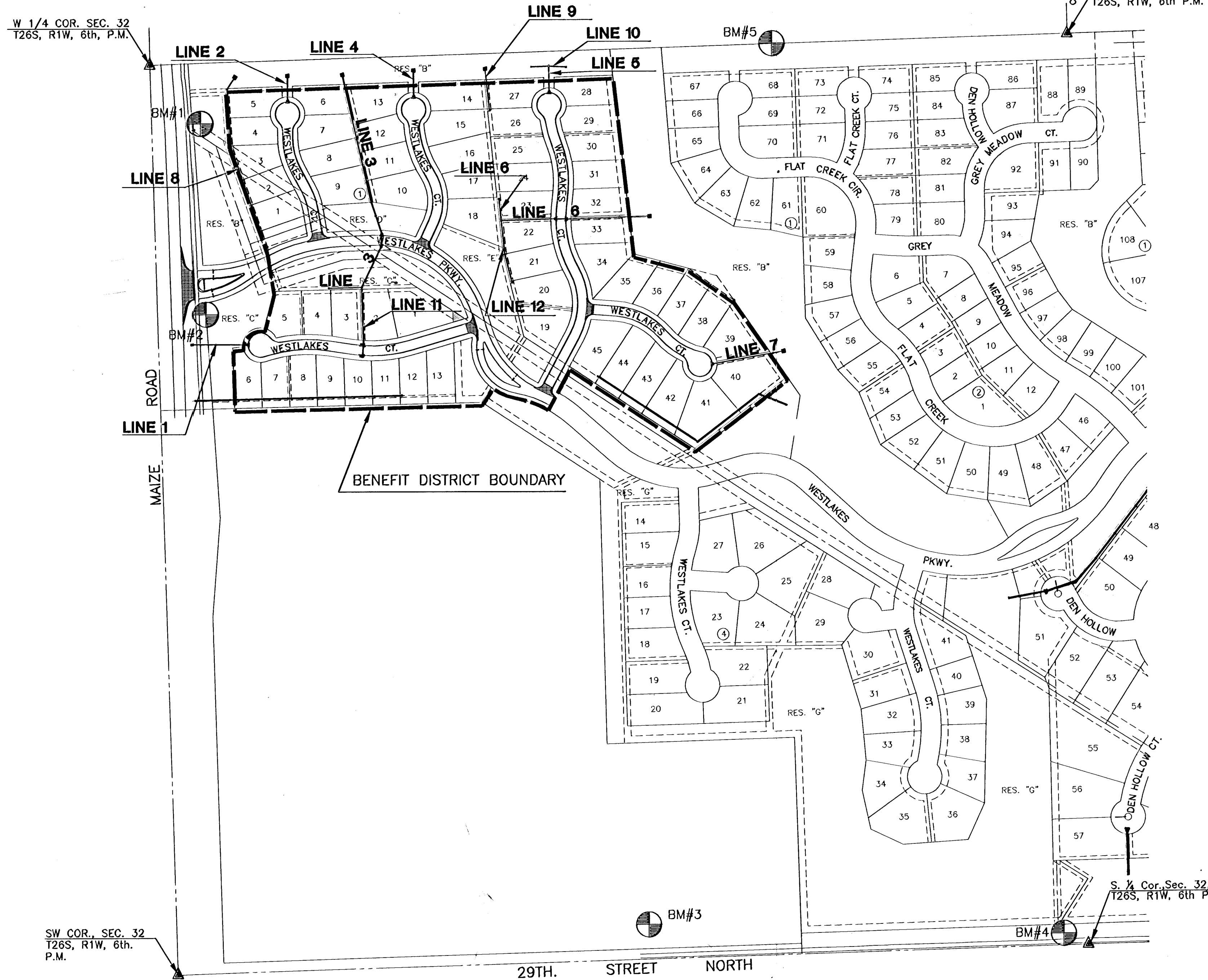
WESTLAKES COURT: SERVING LOTS 1 - 9, BLOCK 1, FROM THE NORTH LINE OF WESTLAKES PARKWAY TO AND INCLUDING THE CUL-DE-SAC.
WESTLAKES COURT: SERVING LOTS 10 - 18, BLOCK 1, FROM THE NORTH LINE OF WESTLAKES PARKWAY TO AND INCLUDING THE CUL-DE-SAC.
WESTLAKES COURT: SERVING LOTS 19-45, BLOCK 1, FROM THE NORTH LINE OF WESTLAKES PARKWAY TO AND INCLUDING THE CUL-DE-SAC.
WESTLAKES COURT: SERVING LOTS 1-13, BLOCK 4, FROM THE WEST LINE OF WESTLAKES PARKWAY TO AND INCLUDING THE CUL-DE-SAC.
WESTLAKES PARKWAY: FROM MAIZE ROAD TO THE WEST LINE OF LOT 45, BLOCK 1.

JIM ARMOUR, P.E., ACTING CITY ENGINEER
OCA 765878

GENERAL NOTES

- UNLESS SHOWN OR STATED OTHERWISE ON THESE DRAWINGS, MATERIALS AND CONSTRUCTION SHALL BE IN ACCORDANCE WITH CITY OF WICHITA CONCRETE PAVEMENT AND ASPHALTIC CONCRETE PAVEMENT SPECIFICATIONS.
- CONTRACTOR WILL BE REQUIRED TO PROVIDE A MINIMUM ADVANCE NOTICE OF SEVENTY-TWO (72) HOURS TO UTILITY COMPANIES PRIOR TO STARTING ANY EXCAVATION AS FOLLOWS:
KANSAS ONE-CALL 1-800-344-7233
OR 687-2470 (LOCAL WICHITA)
THE CONTRACTOR MUST NOTIFY THE FOLLOWING IN CASE OF AN EMERGENCY:
SBC (TELEPHONE) 800-870-8390
COX COMMUNICATIONS (CABLE) 262-0661
WESTAR (ELECTRIC) 383-8900
KANSAS GAS SERVICE (GAS) 832-3101
CITY OF WICHITA WATER & SEWER MAINT. 282-6000
AQUILA (GAS) 946-0096
- THE CONTRACTOR SHALL BE RESPONSIBLE FOR PRESERVING PROPERTY IRONS. THE CONTRACTOR WILL BE REQUIRED TO RE-ESTABLISH ANY PROPERTY IRONS WHICH ARE DAMAGED OR DESTROYED BY HIS CONSTRUCTION OPERATIONS. SUCH IRONS SHALL BE RE-ESTABLISHED BY A LICENSED LAND SURVEYOR IN ACCORDANCE WITH STATE LAWS.
- EXISTING UTILITIES AND THEIR LOCATIONS, AS SHOWN ON THE PLANS REPRESENT THE BEST INFORMATION OBTAINABLE FOR DESIGN. LOCATION INFORMATION HAS BEEN OBTAINED FROM THE VARIOUS UTILITY COMPANIES AND IS EITHER FROM COMPANY RECORD DRAWINGS OR COMPANY PROVIDED FIELD LOCATIONS. THE PLAN LOCATIONS SHOWN ARE NOT GUARANTEED. ADDITIONAL EXISTING UTILITIES MAY ALSO BE ENCOUNTERED.
- RUBBLE FROM THE REMOVAL OF MISCELLANEOUS STRUCTURES AND EXCESS EXCAVATION WHICH IS TO BE WASTED SHALL BE DISPOSED ON SITES TO BE PROVIDED BY THE CONTRACTOR. THESE SITES SHALL BE APPROVED BY THE ENGINEER AS TO SUITABILITY, APPEARANCE AND SITE LOCATION. LOCATIONS THAT, IN THE OPINION OF THE ENGINEER, WILL LEAVE AN UNSIGHTLY APPEARANCE WILL NOT BE APPROVED. ALL DISPOSAL SITES MUST BE APPROVED BY THE KANSAS DEPARTMENT OF HEALTH AND ENVIRONMENT. MATERIAL EITHER STOCKPILED OR DISPOSED OF IN A FLOOD PLAIN WOULD REQUIRE A KANSAS STATE BOARD OF AGRICULTURE PERMIT. ANY MATERIAL DUMPED IN WATERS OF THE UNITED STATES OR WETLANDS IS SUBJECT TO U.S. CORPS OF ENGINEERS PERMITTING REGULATIONS. ANY MATERIAL BURIED OR STOCKPILED BEYOND APPROVED CONSTRUCTION LIMITS WOULD REQUIRE ADDITIONAL ARCHAEOLOGICAL INVESTIGATIONS UNLESS BURIED IN A PREVIOUSLY APPROVED BORROW LOCATION.
- THIS PROJECT INCLUDES A CERTAIN AMOUNT OF ROLL TYPE CURB CONSTRUCTION. ROLL CURBS SHALL BE DEPRESSED THROUGH ALL DRIVEWAY OPENINGS WHEN SUCH DRIVES ARE CONSTRUCTED AS A PART OF THE PROJECT. NO MORE THAN 2 DRIVES 20 FEET IN WIDTH OR EQUIVALENT COMBINATIONS THEREOF ARE TO BE CONSTRUCTED WITH THIS PROJECT.
- TRANSITION CURB FROM FULL HEIGHT COMBINATION CURB AND GUTTER TO ROLL TYPE COMBINATION CURB AND GUTTER IS TO BE PAID AS BID FOR LINEAL FEET COMBINED CURB AND GUTTER (3 5/8" ROLL).
- A SAW CUT OF AT LEAST ONE-HALF THE DEPTH OF THE EXISTING SURFACE COURSES OR ONE-FOURTH THE DEPTH OF THE EXISTING TOTAL PAVEMENT THICKNESS SHALL BE PROVIDED AT LOCATIONS WHERE PROPOSED CONSTRUCTION ABUTS AN EXISTING SURFACE OR PAVEMENT FOR WHICH PARTIAL REMOVAL OF THAT SURFACE OR PAVEMENT IS REQUIRED. SAW JOINT TO FACILITATE REMOVAL WITHIN THREE (3) FEET OF EXISTING JOINTS WILL NOT BE PERMITTED AND FOR SUCH INSTANCES THE LIMITS OF REMOVAL SHALL EXTEND TO THE EXISTING JOINT. SUCH SAW CUTS WILL NOT BE PAID FOR DIRECTLY AND THIS COST SHALL BE CONSIDERED AS SUBSIDIARY TO THE REMOVAL OF SURFACE OR PAVEMENT.
- CONTRACTOR SHALL RESEED AND MULCH ALL DISTURBED AREAS WITH RYE GRASS AT A RATE OF 200 POUNDS PER ACRE. COST SHALL BE CONSIDERED SUBSIDIARY TO SITE RESTORATION.
- SOIL SUBGRADE CONDITIONS WARRANT INSPECTOR APPROVAL BEFORE TENSAR MAT SHALL BE PLACED. CONTRACTOR SHALL PROOF ROLL THE SUBGRADE TO OBTAIN DESIRED COMPACTION. ANY AREAS THAT "PUMP" OR COMPACTION IS NOT OBTAINED SHALL BE EXCAVATED OUT TO A DEPTH DETERMINED BY THE ENGINEER AND REPLACED WITH CRUSH CONCERTE. COST ASSOCIATED WITH PREPARATION OF SUBGRADE SOIL SHALL BE SUBSIDIARY TO EARTHWORK.
- BORROW AVAILABLE ON SITE. CONTRACTOR SHALL COORDINATE WITH DEVELOPER TO DETERMINE BORROW LOCATIONS.

PROJECT LENGTH	
Westlakes Parkway	1395 L.F.
Westlakes Courts	2560 L.F.
EARTHWORK SUMMARY	
EXCAVATION	1300 C.Y.
COMPACTED FILL	790 C.Y.
LOOSE FILL	510 C.Y.



INDEX TO DRAWINGS

SHEET NO.	DESCRIPTION
1	TITLE SHEET
2-3	TYP. PAVING SECTIONS
4	CURVE TABLES
5	PAVING DETAILS
6	VALLEY GUTTER DETAILS
7	WHEELCHAIR RAMP DETAILS
8	SIGNING DETAILS
9-18	PAVING PLANS
19-23	INLET & MANHOLE DETAILS
24-32	STORM SEWER PLANS
33-37	EROSION DETAILS
38-49	CROSS SECTIONS
50	FINAL PLAT



SCALE: 1"=200'

BENCHMARKS

- BM#1 PK nail (point numbered 201) in asphalt on bike path 60 feet South of 33rd St. N. on East side of Maize Rd. 28 feet NW. of PP. Elev. = 163.97
- BM#2 RR spike in W. face of PP East side Maize Rd., 100 feet ± S. of Cora St. Elev. = 165.58
- BM#3 RR spike in NW face of PP N. side of 29th St. N., 6th PP West of C.O.W. Disc (Disc 1/2 mile East of Maize Rd.) Elev. = 164.55
- BM#4 C.O.W. disc 0.5 miles east of Maize Rd. on 29th St. N. 25'+/- N. of centerline of 29th St. Elev. = 160.86
- BM#5 RR spike in S face of south H-pole 6th H-pole West of Tyler Rd. and 1/2 mile North of 29th St. N. Elev. = 166.37



AS-BUILT JUNE 2006
G:\CIVIL\99118\dwg\PAV\PH_8\99118ET8.dwg

 MKEC ENGINEERING CONSULTANTS 411 N. WEBB ROAD WICHITA, KS. 67206 316-684-9600	FOX RIDGE ADDITION	
	PROJECT NAME	
	PAVING & INCIDENTAL DRAINAGE PLANS	
	SHEET TITLE	
SS DESIGN BY.	DM DRAWN BY.	GA CHECKED BY.
SEPTEMBER 2004 DATE	99118ET8 JOB NO.	1 / 50 SHEET/OF