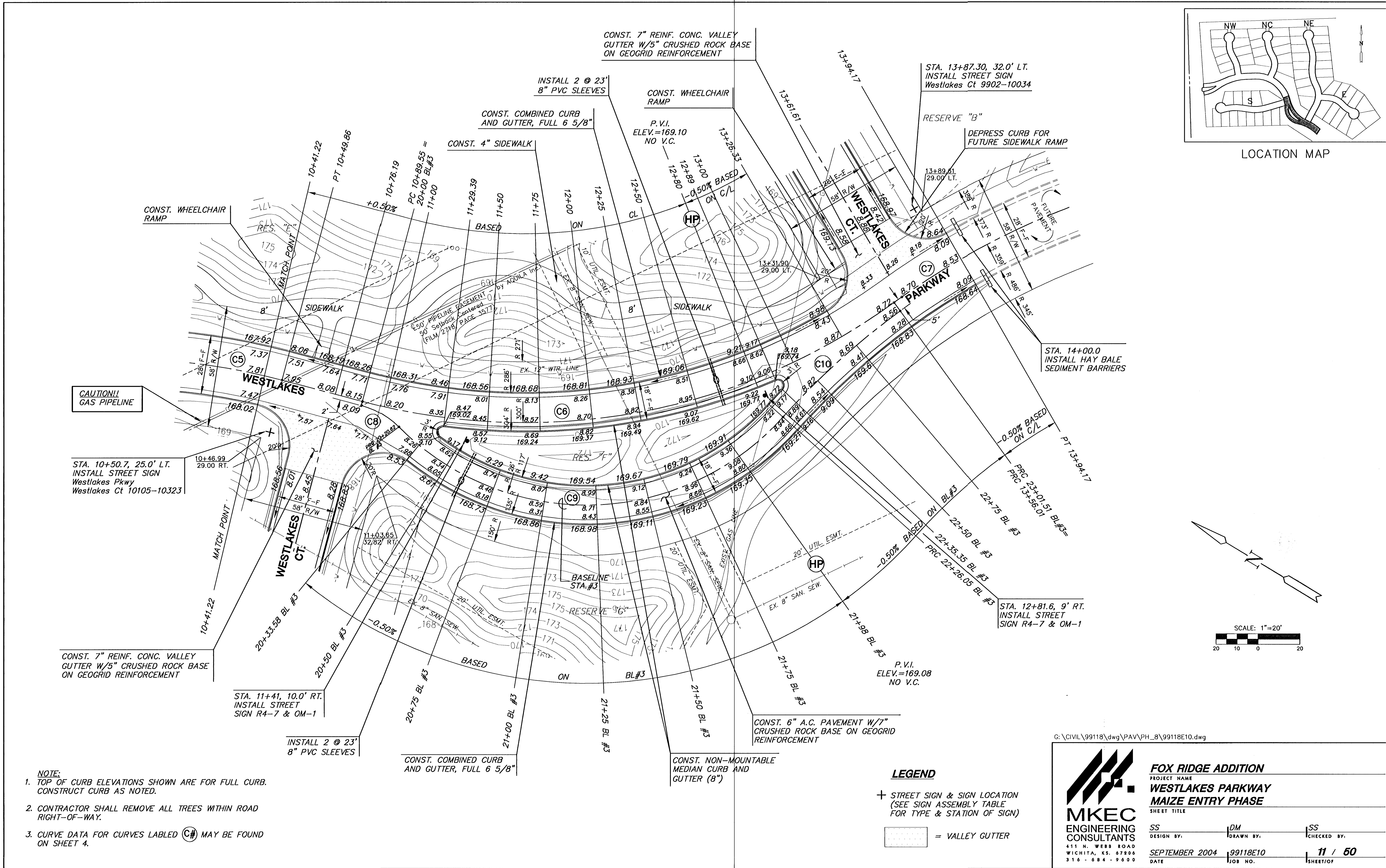


LOCATION MAP



CAUTION!!  
GAS PIPELINE

STA. 10+50.7, 25.0' LT.  
INSTALL STREET SIGN  
Westlakes Pkwy  
Westlakes Ct 10105-10323

CONST. 7" REINF. CONC. VALLEY  
GUTTER W/5" CRUSHED ROCK BASE  
ON GEOGRID REINFORCEMENT

STA. 11+41, 10.0' RT.  
INSTALL STREET  
SIGN R4-7 & OM-1

INSTALL 2 @ 23'  
8" PVC SLEEVES

CONST. COMBINED CURB  
AND GUTTER, FULL 6 5/8"

CONST. NON-MOUNTABLE  
MEDIAN CURB AND  
GUTTER (8")

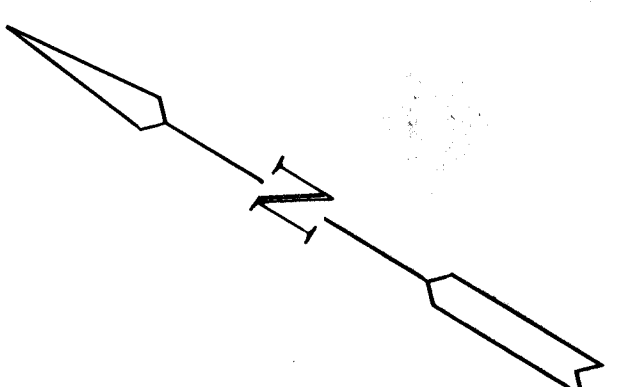
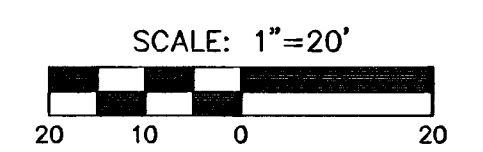
- LEGEND**
- + STREET SIGN & SIGN LOCATION  
(SEE SIGN ASSEMBLY TABLE  
FOR TYPE & STATION OF SIGN)
  - [Symbol] = VALLEY GUTTER

G:\CIVIL\99118\dwg\PAV\PH\_8\99118E10.dwg



**FOX RIDGE ADDITION**  
PROJECT NAME  
**WESTLAKES PARKWAY**  
**MAIZE ENTRY PHASE**  
SHEET TITLE

SS DESIGN BY.	DM DRAWN BY.	SS CHECKED BY.
SEPTEMBER 2004 DATE	99118E10 JOB NO.	11 / 50 SHEET/OF



- NOTE:**
1. TOP OF CURB ELEVATIONS SHOWN ARE FOR FULL CURB. CONSTRUCT CURB AS NOTED.
  2. CONTRACTOR SHALL REMOVE ALL TREES WITHIN ROAD RIGHT-OF-WAY.
  3. CURVE DATA FOR CURVES LABELED (C#) MAY BE FOUND ON SHEET 4.