

Subdivision Bench Marks

No.	Street and Station	From CL	Description	Elevation
1	BL Sta. 2+75	14.5' Lt.	North curb return of Athenian and Athenian Court, adjacent to Fire Hydrant.	



SCALE 1" = 20'
IRON = •

VALENCIA

BL STA. 3+12.46 (ATHENIAN)
BL STA. 0+00 (ATHENIAN COURT)

2

3

Athenian

00+7

00+0

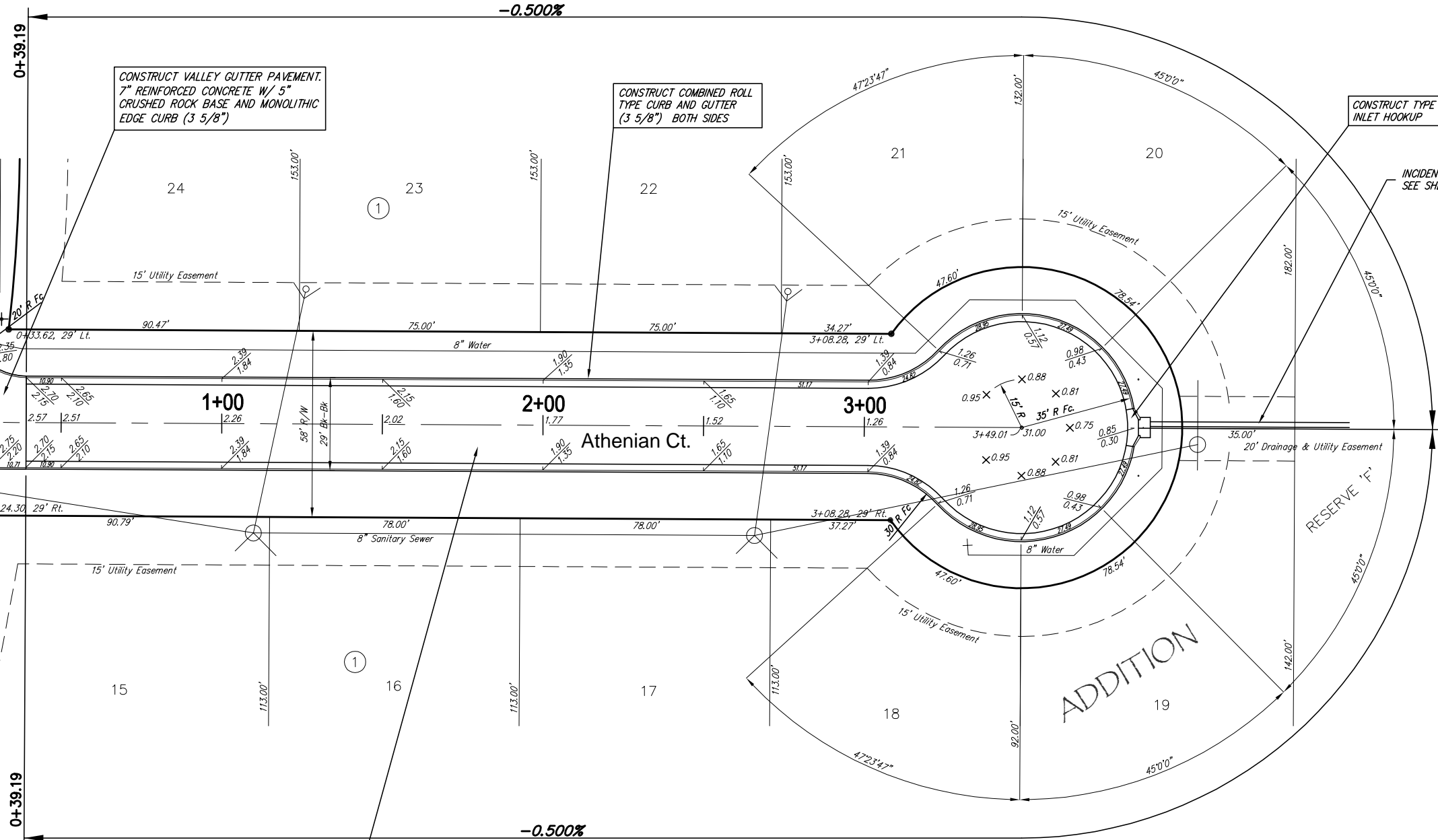
CONSTRUCT 5" ASPHALT
CONCRETE PAVEMENT W/ 5"
CRUSHED ROCK BASE

CONSTRUCT VALLEY GUTTER PAVEMENT.
7" REINFORCED CONCRETE W/ 5"
CRUSHED ROCK BASE AND MONOLITHIC
EDGE CURB (3 5/8")

CONSTRUCT COMBINED ROLL
TYPE CURB AND GUTTER
(3 5/8") BOTH SIDES

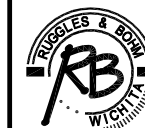
CONSTRUCT TYPE 1A
INLET HOOKUP

INCIDENTAL DRAINAGE
SEE SHEET 6.



NOTE: ROLL TYPE CURB AND
GUTTER TO BE CONSTRUCTED ALONG
PAVEMENT DEPICTED ON THIS SHEET

Valencia Addition, Paving Improvements
Athenian Court
WICHITA, KANSAS



Ruggles & Bohm, P.A.
Engineering, Surveying, Land Planning

924 North Main (316) 264-8008
Wichita, Kansas 67203 (316) 264-4621 fax
www.rbkansas.com E-mail: info@rbkansas.com

DRAWING FILE paving {Athenian Ct} PROJECT NUMBER 472-84473 DATE Apr. 10, 2007

DESIGN	CMB	SHEET 5 OF 22
DRAWN	RA	
REVIEW		
UTILITY		