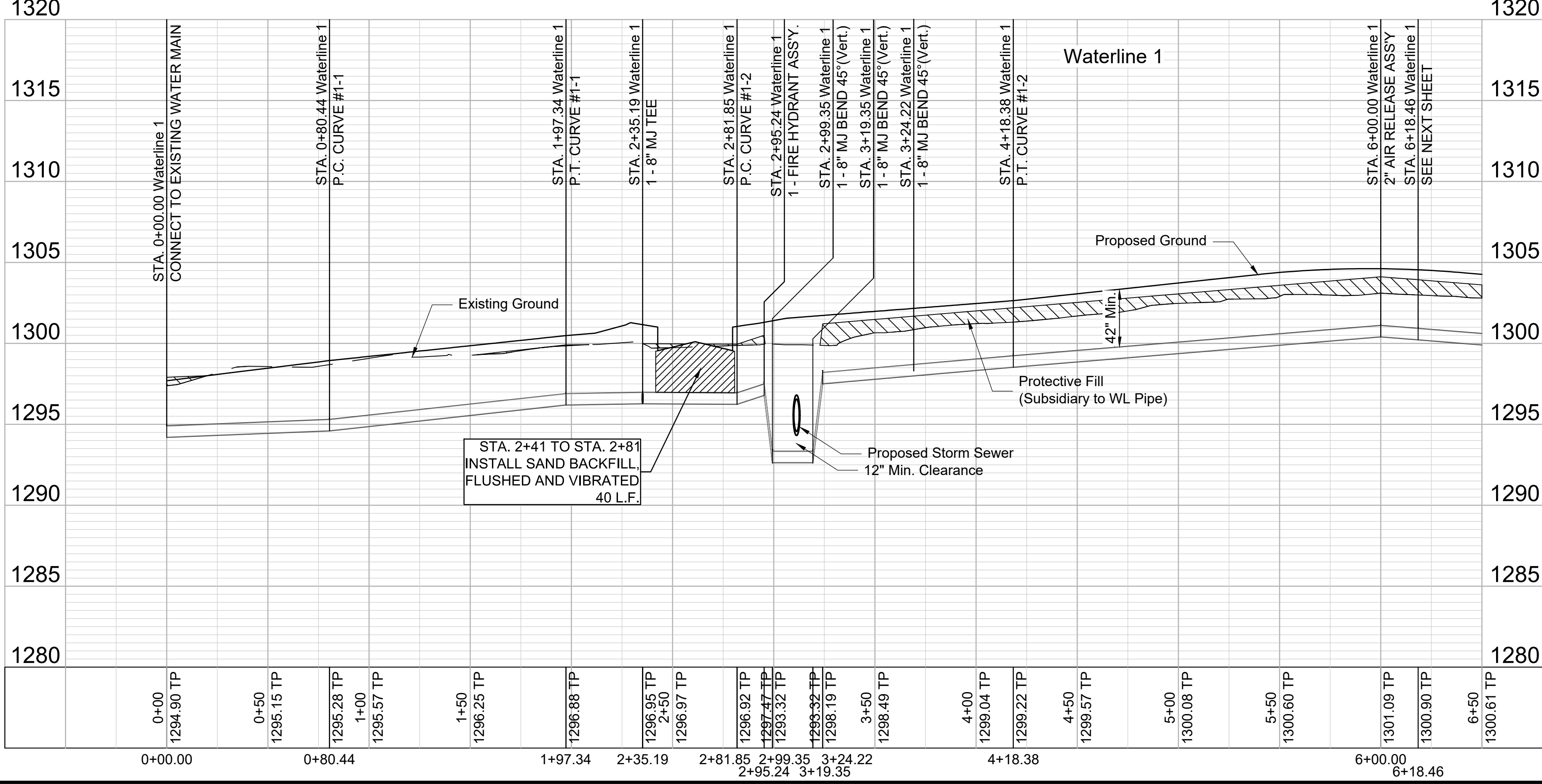
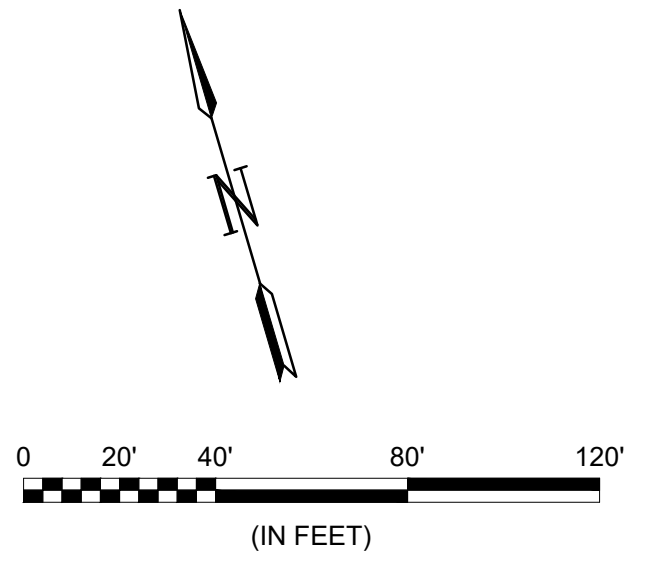
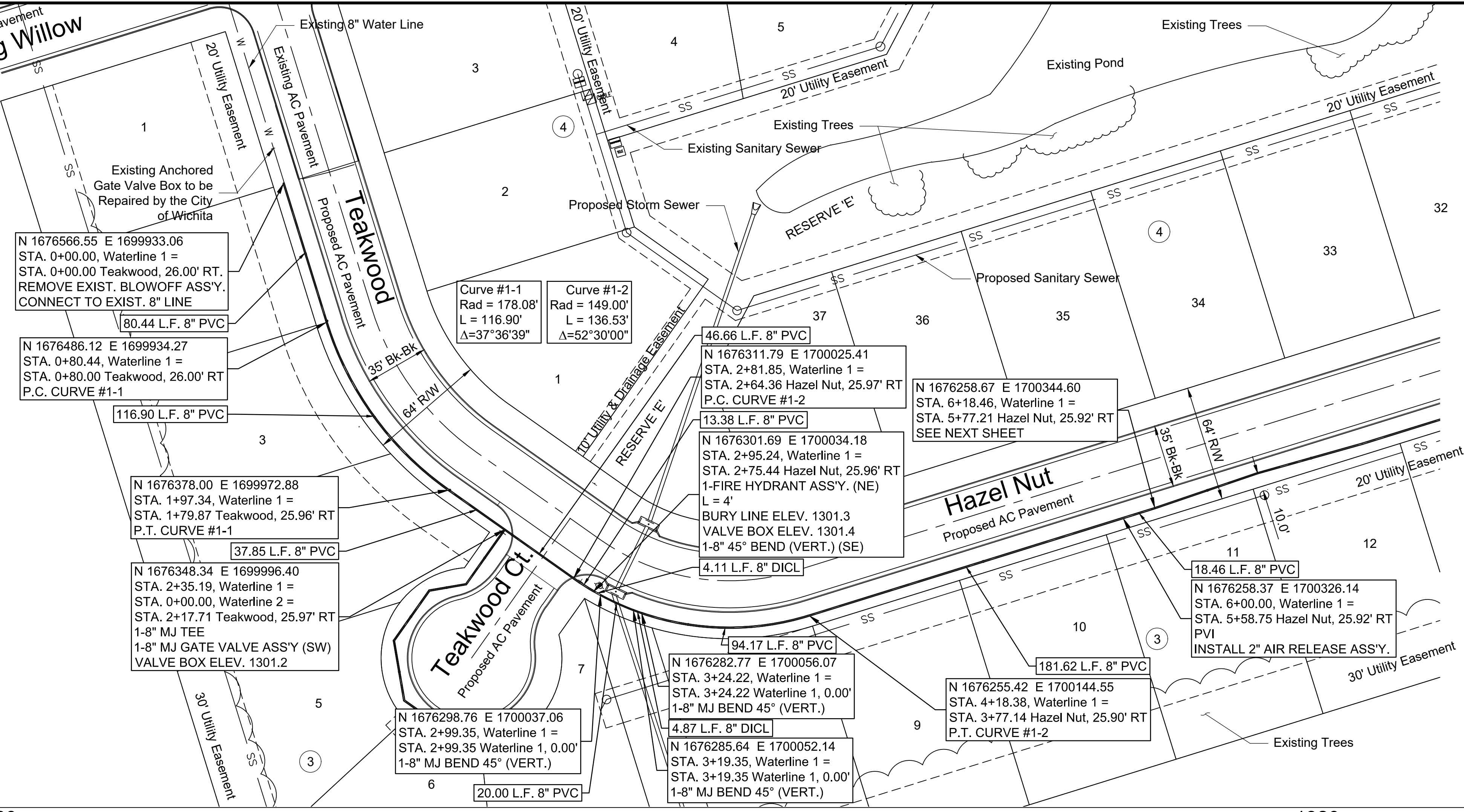


Existing AC Pavement
Weeping Willow



File: L:\2019\19T41011 - Whispering Lakes Phase 5\Drawings\C3D\Water02 - Water Line 1.dwg Last Save: 8/29/2019 9:46 AM Last saved by: CDJurey
 Last plotted by: Jurey, Caleb D. Plot Date: 8/29/2019 9:47 AM Plotter used: None

© 2019 GARVER, LLC
THIS DOCUMENT, ALONG WITH THE IDEAS AND DESIGNS CONVEYED HEREIN, SHALL BE CONSIDERED INSTRUMENTS OF PROFESSIONAL SERVICE AND ARE PROPERTY OF GARVER, LLC. ANY USE, REPRODUCTION, OR DISTRIBUTION OF THIS DOCUMENT, ALONG WITH THE IDEAS AND DESIGN CONTAINED HEREIN, IS PROHIBITED UNLESS AUTHORIZED IN WRITING BY GARVER, LLC OR EXPLICITLY ALLOWED IN THE GOVERNING PROFESSIONAL SERVICES AGREEMENT FOR THIS WORK.

KENNETH W. LEE
15373
9-3-19
KANSAS
PROFESSIONAL ENGINEER

REV.	DATE	DESCRIPTION	BY



WHISPERING LAKES
ADDITION, PHASE 5
WATER DISTRIBUTION
SYSTEM

Water Line 1

JOB NO.: 19T41011
DATE: AUG 2019
DESIGNED BY: KWL
DRAWN BY: CDJ

BAR IS ONE INCH ON ORIGINAL DRAWING
IF NOT ONE INCH ON THIS SHEET, ADJUST SCALES ACCORDINGLY.

DRAWING NUMBER

SHEET NUMBER **2** OF **16**