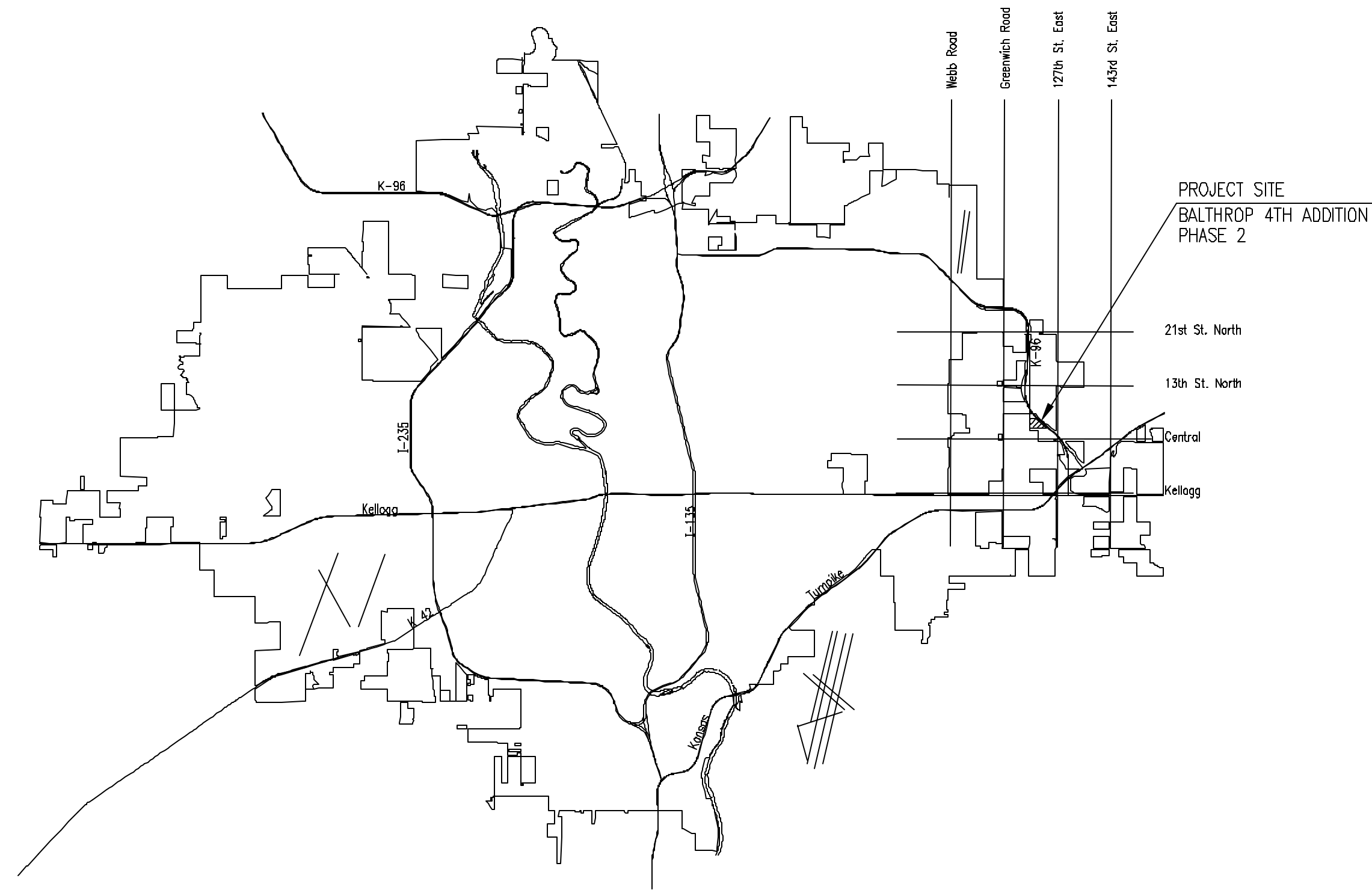


CONSTRUCTION PLANS FOR
LATERAL 328
 OF THE
FOUR MILE CREEK SEWER
 IN
THE CITY OF WICHITA,
 SEDGWICK COUNTY, KANSAS
 NEIL D. CABLE, P.E. - CITY ENGINEER



LOCATION MAP

INDEX OF SHEETS

SHEET NO. 1	TITLE SHEET
SHEET NO. 2	KEY MAP AND GENERAL NOTES
SHEET NO. 3	PLAT
SHEET NO. 4-6	PLAN/PROFILE
SHEET NO. 7	TYPE "P" MANHOLE DETAILS
SHEET NO. 8	SHALLOW MANHOLES TYPE "P" & "C"
SHEET NO. 9	FRAME & COVER DETAILS
SHEET NO. 10	RISER DETAILS
SHEET NO. 11-14	SOIL EROSION BMP DETAILS

OCA NO. 743956

CITY OF WICHITA PROJECT NO. 468-83391

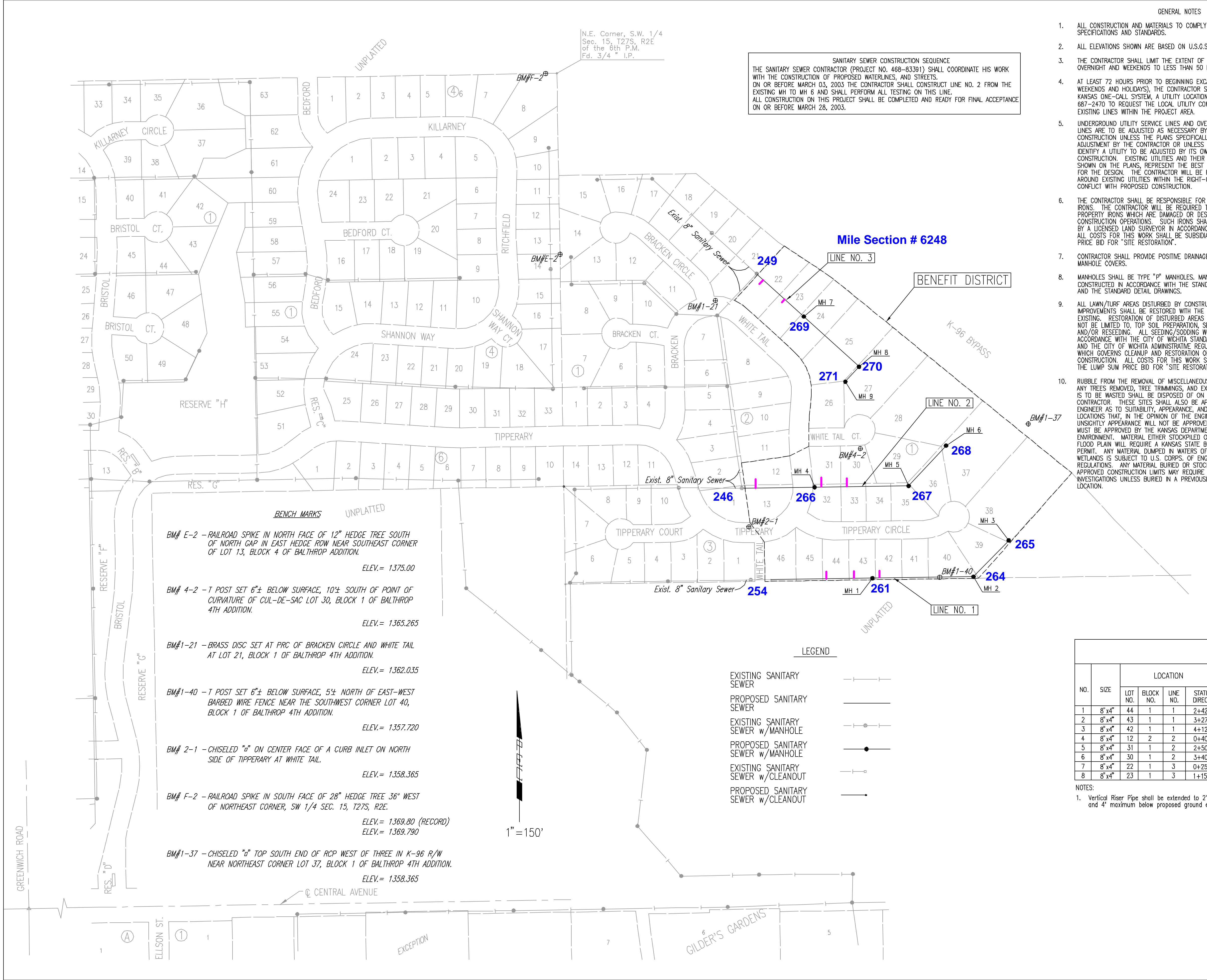
JANUARY 2003

PLANS PREPARED BY

PROFESSIONAL ENGINEERING CONSULTANTS, P.A.
 ENGINEERS
 WICHITA, KANSAS

BUILT PER PLAN
6/03/03
RDL
RISERS

DSNR: MDK OPER: JGA SCALE: 1"=150.00
 Q:\2002\02608\001\SSKEMAP.DWG 01-07-2003 04:40:17 pm

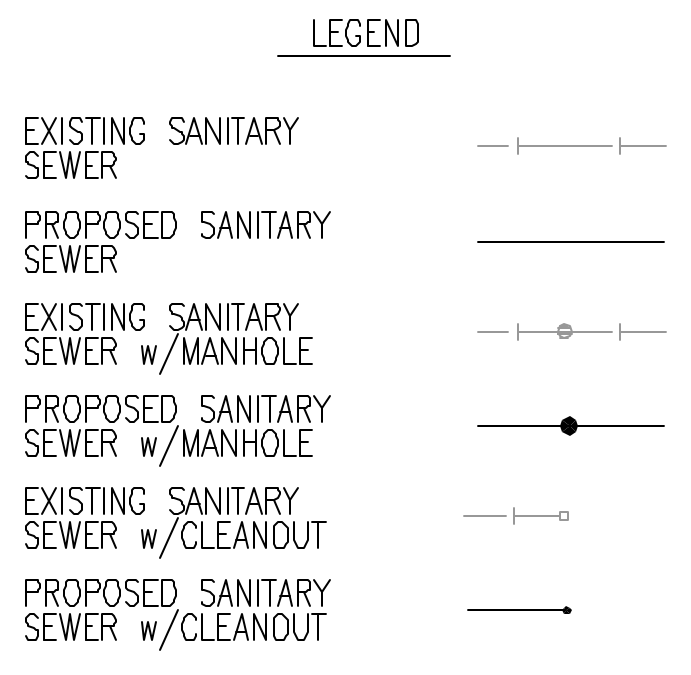


SANITARY SEWER CONSTRUCTION SEQUENCE
 THE SANITARY SEWER CONTRACTOR (PROJECT NO. 468-83391) SHALL COORDINATE HIS WORK WITH THE CONSTRUCTION OF PROPOSED WATERLINES, AND STREETS. ON OR BEFORE MARCH 03, 2003 THE CONTRACTOR SHALL CONSTRUCT LINE NO. 2 FROM THE EXISTING MH TO MH 6 AND SHALL PERFORM ALL TESTING ON THIS LINE. ALL CONSTRUCTION ON THIS PROJECT SHALL BE COMPLETED AND READY FOR FINAL ACCEPTANCE ON OR BEFORE MARCH 28, 2003.

GENERAL NOTES

- ALL CONSTRUCTION AND MATERIALS TO COMPLY WITH CITY OF WICHITA SPECIFICATIONS AND STANDARDS.
- ALL ELEVATIONS SHOWN ARE BASED ON U.S.G.S. DATUM.
- THE CONTRACTOR SHALL LIMIT THE EXTENT OF TRENCH TO REMAIN OPEN OVERNIGHT AND WEEKENDS TO LESS THAN 50 FEET.
- AT LEAST 72 HOURS PRIOR TO BEGINNING EXCAVATION (EXCLUDING WEEKENDS AND HOLIDAYS), THE CONTRACTOR SHALL CONTACT THE KANSAS ONE-CALL SYSTEM, A UTILITY LOCATION SERVICE, AT (316) 687-2470 TO REQUEST THE LOCAL UTILITY COMPANIES MARK ANY EXISTING LINES WITHIN THE PROJECT AREA.
- UNDERGROUND UTILITY SERVICE LINES AND OVERHEAD UTILITY POLE LINES ARE TO BE ADJUSTED AS NECESSARY BY OTHERS PRIOR TO CONSTRUCTION UNLESS THE PLANS SPECIFICALLY CALL FOR THEIR ADJUSTMENT BY THE CONTRACTOR OR UNLESS THE PLANS SPECIFICALLY IDENTIFY A UTILITY TO BE ADJUSTED BY ITS OWNER DURING CONSTRUCTION. EXISTING UTILITIES AND THEIR LOCATIONS, AS SHOWN ON THE PLANS, REPRESENT THE BEST INFORMATION OBTAINABLE FOR THE DESIGN. THE CONTRACTOR WILL BE REQUIRED TO WORK AROUND EXISTING UTILITIES WITHIN THE RIGHT-OF-WAY WHICH DO NOT CONFLICT WITH PROPOSED CONSTRUCTION.
- THE CONTRACTOR SHALL BE RESPONSIBLE FOR PRESERVING PROPERTY IRONS. THE CONTRACTOR WILL BE REQUIRED TO RE-ESTABLISH ANY PROPERTY IRONS WHICH ARE DAMAGED OR DESTROYED BY HIS CONSTRUCTION OPERATIONS. SUCH IRONS SHALL BE RE-ESTABLISHED BY A LICENSED LAND SURVEYOR IN ACCORDANCE WITH STATE LAWS. ALL COSTS FOR THIS WORK SHALL BE SUBSIDIARY TO THE LUMP SUM PRICE BID FOR "SITE RESTORATION".
- CONTRACTOR SHALL PROVIDE POSITIVE DRAINAGE AWAY FROM ALL MANHOLE COVERS.
- MANHOLES SHALL BE TYPE "P" MANHOLES. MANHOLES SHALL BE CONSTRUCTED IN ACCORDANCE WITH THE STANDARD SPECIFICATIONS AND THE STANDARD DETAIL DRAWINGS.
- ALL LAWN/TURF AREAS DISTURBED BY CONSTRUCTION OF THE PROPOSED IMPROVEMENTS SHALL BE RESTORED WITH THE SAME GRASS/SOD AS EXISTING. RESTORATION OF DISTURBED AREAS SHALL INCLUDE, BUT NOT BE LIMITED TO, TOP SOIL PREPARATION, SEEDING, MULCH, AND/OR RESEEDING. ALL SEEDING/SODDING WORK SHALL BE IN ACCORDANCE WITH THE CITY OF WICHITA STANDARD SPECIFICATIONS AND THE CITY OF WICHITA ADMINISTRATIVE REGULATION NO. AR78 WHICH GOVERNS CLEANUP AND RESTORATION OR REPLACEMENT FOLLOWING CONSTRUCTION. ALL COSTS FOR THIS WORK SHALL BE SUBSIDIARY TO THE LUMP SUM PRICE BID FOR "SITE RESTORATION".
- RUBBLE FROM THE REMOVAL OF MISCELLANEOUS STRUCTURES INCLUDING ANY TREES REMOVED, TREE TRIMMINGS, AND EXCESS EXCAVATION WHICH IS TO BE WASTED SHALL BE DISPOSED OF ON SITES PROMISED BY THE CONTRACTOR. THESE SITES SHALL ALSO BE APPROVED BY THE ENGINEER AS TO SUITABILITY, APPEARANCE, AND SITE LOCATION. LOCATIONS THAT, IN THE OPINION OF THE ENGINEER, WILL LEAVE AN UNSIGHTLY APPEARANCE WILL NOT BE APPROVED. ALL DISPOSAL SITES MUST BE APPROVED BY THE KANSAS DEPARTMENT OF HEALTH AND ENVIRONMENT. MATERIAL EITHER STOCKPILED OR DISPOSED OF IN A FLOOD PLAIN WILL REQUIRE A KANSAS STATE BOARD OF AGRICULTURE PERMIT. ANY MATERIAL DUMPED IN WATERS OF THE UNITED STATES OR WETLANDS IS SUBJECT TO U.S. CORPS OF ENGINEERS PERMITTING REGULATIONS. ANY MATERIAL BURIED OR STOCKPILED BEYOND APPROVED CONSTRUCTION LIMITS MAY REQUIRE ARCHAEOLOGICAL INVESTIGATIONS UNLESS BURIED IN A PREVIOUSLY APPROVED DISPOSAL LOCATION.
- THE CONTRACTOR SHALL AVOID REMOVAL OR TRIMMING OF ANY TREES OR SHRUBS WHERE POSSIBLE. WHERE THE CONTRACTOR BELIEVES THE REMOVAL OR TRIMMING IS UNAVOIDABLE, HE SHALL COORDINATE SUCH WORK WITH THE ENGINEER. COSTS FOR TREE/SHRUB REMOVAL AND TRIMMING REGARDLESS OF SIZE SHALL BE CONSIDERED SUBSIDIARY TO THE LUMP SUM PRICE BID FOR "SITE CLEARING".
- THE CONTRACTOR SHALL PREVENT ANY CONSTRUCTION DEBRIS FROM ENTERING THE EXISTING SANITARY SEWER DURING CONSTRUCTION.
- THE CONTRACTOR SHALL GIVE ALL PROPERTY OWNERS AND/OR TENANTS OF DEVELOPED PROPERTY ADEQUATE NOTICE OF THIS PROJECT A MINIMUM OF TEN (10) DAYS ADVANCE NOTICE PRIOR TO START OF CONSTRUCTION.
- ALL APPROVED EXCESS EXCAVATION WHICH IS TO BE WASTED SHALL BE STOCKPILED WITHIN BALTHROP 4TH ADDITION AT NO ADDITIONAL COST TO THE OWNER. STOCKPILE LOCATIONS SHALL BE AS APPROVED BY THE DEVELOPER AND IN ACCORDANCE WITH GENERAL NOTE NO. 10 ABOVE.
- CONTRACTOR IS REQUIRED TO MAINTAIN CONTINUOUS FLOW OF SEWAGE IN EXISTING MAINS AT ALL TIMES.
- THE CONTRACTOR SHALL SEED ALL AREAS DISTURBED BY CONSTRUCTION ACTIVITIES WITH TEMPORARY RYE GRASS. RYE GRASS SEED SHALL BE PLANTED AT A MINIMUM RATE OF SIX (6) POUNDS PER ONE THOUSAND (1,000) SQUARE FEET. THIS TEMPORARY SEEDING MAY BE OMITTED ONLY IF OTHER SEEDING IS REQUIRED IN ACCORDANCE WITH GENERAL NOTE NO. 9 ABOVE. TEMPORARY SEEDING OR PERMANENT SEEDING/SODDING SHALL BE APPLIED WITHIN 14 DAYS AFTER THE AREA HAS BEEN DISTURBED.
- THE CONTRACTOR SHALL NOT BURY MANHOLES THAT HAVE RIM ELEVATIONS WHICH ARE LOWER THAN EXISTING GROUND AT THE MANHOLE. THE GROUND AROUND SUCH MANHOLES AND ALONG THE SEWER ALIGNMENT SHALL BE BACKFILLED TO THE APPROXIMATE ELEVATION OF THE PROPOSED GROUND ELEVATION SHOWN ON THE PLAN/PROFILE SHEETS. THE CONTRACTOR SHALL PROVIDE DRAINAGE AWAY FROM THESE MANHOLES AND SEWER LINES BY CONSTRUCTION OF TEMPORARY DITCHES OR SLOPING THE GROUND AS REQUIRED. ALL COSTS FOR THIS WORK SHALL BE CONSIDERED SUBSIDIARY TO THE INSTALLED BID PRICE FOR MANHOLES.
- THE CONTRACTOR SHALL PROVIDE MOUNDING EARTH AT MANHOLES AND CLEANOUTS THAT HAVE TOP ELEVATIONS GREATER THAN 1 FOOT ABOVE FINISHED GRADE, AS SHOWN ON THE PLANS. COSTS FOR MOUNDING SHALL BE CONSIDERED SUBSIDIARY TO THE INSTALLED BID PRICE FOR MANHOLES.
- INTERURBAN TRAFFIC GENERATED OUTSIDE THE PROJECT AREA AND LOCAL BUSINESS OR RESIDENTIAL TRAFFIC GENERATED WITHIN THE PROJECT AREA ARE TO BE CARRIED THROUGH CONSTRUCTION AS FURTHER PROMULGATED BY PROJECT SPECIAL PROVISIONS.

- BENCH MARKS UNPLATTED**
- BM# E-2 - RAILROAD SPIKE IN NORTH FACE OF 12" HEDGE TREE SOUTH OF NORTH GAP IN EAST HEDGE ROW NEAR SOUTHEAST CORNER OF LOT 13, BLOCK 4 OF BALTHROP 4TH ADDITION. ELEV.= 1375.00
 - BM# 4-2 - T POST SET 6"± BELOW SURFACE, 10'± SOUTH OF POINT OF CURVATURE OF CUL-DE-SAC LOT 30, BLOCK 1 OF BALTHROP 4TH ADDITION. ELEV.= 1365.265
 - BM#1-21 - BRASS DISC SET AT PRC OF BRACKEN CIRCLE AND WHITE TAIL AT LOT 21, BLOCK 1 OF BALTHROP 4TH ADDITION. ELEV.= 1362.035
 - BM#1-40 - T POST SET 6"± BELOW SURFACE, 5'± NORTH OF EAST-WEST BARBED WIRE FENCE NEAR THE SOUTHWEST CORNER LOT 40, BLOCK 1 OF BALTHROP 4TH ADDITION. ELEV.= 1357.720
 - BM# 2-1 - CHISELED "d" ON CENTER FACE OF A CURB INLET ON NORTH SIDE OF TIPPERARY AT WHITE TAIL. ELEV.= 1358.365
 - BM# F-2 - RAILROAD SPIKE IN SOUTH FACE OF 28" HEDGE TREE 36" WEST OF NORTHEAST CORNER, SW 1/4 SEC. 15, T27S, R2E. ELEV.= 1369.80 (RECORD) ELEV.= 1369.790
 - BM#1-37 - CHISELED "d" TOP SOUTH END OF RCP WEST OF THREE IN K-96 R/W NEAR NORTHEAST CORNER LOT 37, BLOCK 1 OF BALTHROP 4TH ADDITION. ELEV.= 1358.365



SEWER SERVICE TABLE
 (See detail and notes, sheet no. 11)

NO.	SIZE	LOCATION				FOR INFORMATION ONLY		RECORD INFORMATION (TO BE COMPLETED BY PROJECT INSPECTOR)		NO.
		LOT NO.	BLOCK NO.	LINE NO.	STATION/ DIRECTION	APPROXIMATE LENGTH 4" PIPE		DISTANCE FROM NEAREST MANHOLE		
						VERTICAL	HORIZONTAL	UPSTREAM	DOWNSTREAM	
1	8"x4"	44	1	1	2+42/Lt.	9'	24'			1
2	8"x4"	43	1	1	3+27/Lt.	10'	24'			2
3	8"x4"	42	1	1	4+12/Lt.	10'	24'			3
4	8"x4"	12	2	2	0+40/Lt.	7'	19'			4
5	8"x4"	31	1	2	2+50/Lt.	7'	24'			5
6	8"x4"	30	1	2	3+40/Lt.	8'	24'			6
7	8"x4"	22	1	3	0+25/Rt.	9'	4'			7
8	8"x4"	23	1	3	1+15/Rt.	9'	4'			8

- NOTES:**
- Vertical Riser Pipe shall be extended to 2' minimum above ground water elevation and 4' maximum below proposed ground elevation.

No. _____ Revision _____ By _____ Date _____

LATERAL 328 OF THE FOUR MILE CREEK SEWER

KEY MAP AND GENERAL NOTES

NEIL D. CABLE, P.E. - CITY ENGINEER
 CITY OF WICHITA PROJECT NO. 468-83391

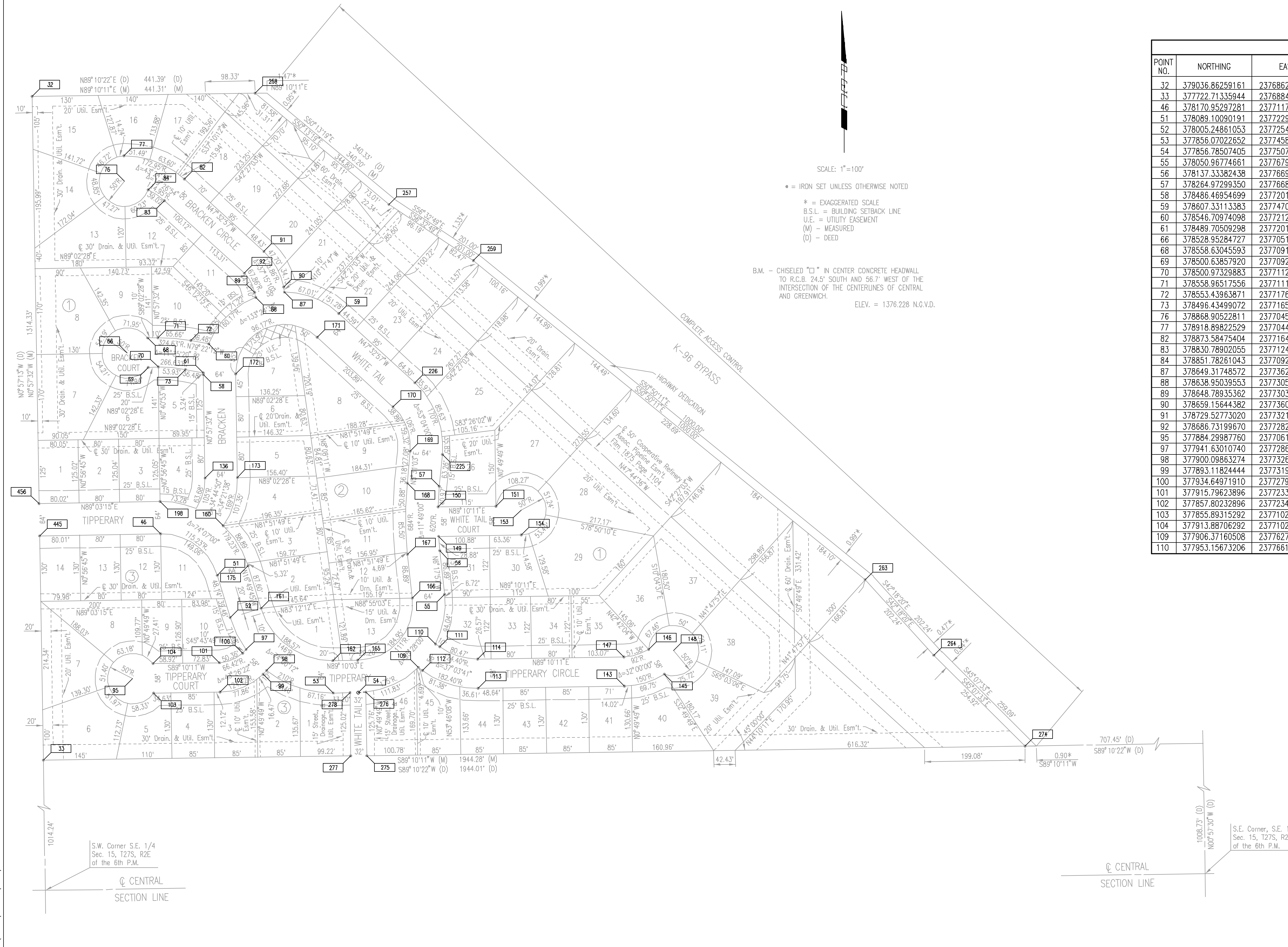
Professional Engineering Consultants, P.A.
 303 S. TOPEKA • WICHITA, KANSAS 67202
 316-262-2691 • FAX 316-262-3003

Designed by MDK Job No. 35-02608-1
 Drawn by JGA Date January 2003

Sheet 2 of 14

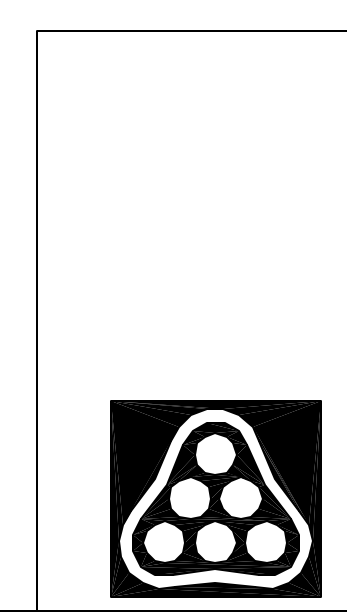
BALTHROP 4TH ADDITION

TO WICHITA, SEDGWICK COUNTY, KANSAS



COORDINATE LIST					
POINT NO.	NORTHING	EASTING	POINT NO.	NORTHING	EASTING
32	379036.86259161	2376862.51812258	111	377947.24630301	2377669.73364197
33	377722.71335944	2376884.51478024	112	377900.46117603	2377635.45315345
46	378170.95297281	2377117.05086541	113	377865.21072535	2377745.90492098
51	378089.10090191	2377229.24716109	114	377923.20463535	2377745.06444304
52	378005.24861053	2377254.61044328	136	378281.49825854	2377205.20788175
53	377856.07022652	2377458.66785469	143	377869.40783131	2378035.50988532
54	377856.78507405	2377507.85952001	145	377893.35008257	2378114.65913849
55	378050.96774661	2377679.26013633	146	377942.08632208	2378083.21428265
56	378137.33382438	2377669.72641711	147	377927.40174130	2378034.66940738
57	378264.97299350	2377668.85560798	148	377939.80052783	2378133.16200677
58	378486.46954699	2377201.77700560	149	378166.10220178	2377667.22730982
59	378607.33113383	2377470.02870856	150	378224.09436380	2377666.26621885
60	378546.70974098	2377212.45460495	151	378225.76082868	2377781.25414385
61	378489.70509298	2377201.75553459	153	378218.47688427	2377830.72074019
66	378528.95284727	2377051.04489490	154	378168.48213427	2377831.44529014
68	378558.63045593	2377091.28467054	160	378186.70557473	2377241.30913300
69	378500.63857920	2377092.25535745	161	378203.77965522	2377315.86942633
70	378500.97329883	2377112.25255631	162	377920.06346997	2377457.73791235
71	378558.96517556	2377111.28186940	165	377920.77831750	2377506.92957768
72	378553.43963871	2377176.59770911	166	378043.94561266	2377615.64654003
73	378496.43499072	2377165.89863874	167	378130.31169043	2377606.11282080
76	378868.90522811	2377045.35466128	168	378271.12651573	2377605.15212170
77	378918.89822529	2377044.51786221	169	378334.08914668	2377611.23408003
82	378873.58475404	2377164.14646645	170	378422.49351011	2377577.27057546
83	378830.78902055	2377124.99898640	171	378560.10825549	2377426.83148919
84	378851.78261043	2377092.33142110	172	378487.54064979	2377265.76804200
87	378649.31748572	2377362.29968028	173	378282.56936134	2377269.19891815
88	378638.95039553	2377305.23723355	175	378107.63025690	2377290.50614414
89	378648.78935362	2377303.44629400	198	378234.94425036	2377115.99426806
90	378659.15644382	2377360.51225094	225	378327.93562445	2377674.93756631
91	378729.52773020	2377321.62853150	226	378469.71668845	2377620.46779484
92	378686.73199670	2377282.48105144	236	378703.28361640	2377746.98820263
95	377884.29987760	2377061.83530617	257	378822.65135500	2377568.77018600
97	377941.63010740	2377286.44150121	258	379043.25763647	2377303.78389160
98	377900.09863274	2377326.92775335	259	378711.85087300	2377736.47007600
99	377893.11824444	2377319.78715428	264	377930.74611600	2378647.93888800
100	377934.64971910	2377279.28090213	274	377750.88788717	2378828.58861892
101	377915.79623896	2377233.87687768	275	377732.00462230	2377525.67111970
102	377857.80232896	2377234.71735562	276	377857.75059880	2377523.84857410
103	377855.89315292	2377102.98209211	277	377731.54086720	2377493.67448040
104	377913.88706292	2377102.14161417	278	377856.55261150	2377491.86257660
109	377906.37160508	2377627.38675224	445	378166.99064601	2376877.07832238
110	377953.15673206	2377661.66724077	456	378230.98168405	2376876.00721956

DSNR: MDK OPER. JCA SCALE: 1"=100.00
 C:\2002\02608\001\SSPLAT 01-08-2003 10:19:55 am



No.	Revision	By	Date
	LATERAL 328 OF THE FOUR MILE CREEK SEWER		
	PLAT		
	NEIL D. CABLE, P.E. - CITY ENGINEER CITY OF WICHITA PROJECT NO. 468-83391		
	Professional Engineering Consultants, P.A. 303 S. TOPEKA • WICHITA, KANSAS 67202 316-262-2691 • FAX 316-262-3003		
Designed by	MDK	Job No.	35-02608-1
Drawn by	JCA	Date	January 2003
			SH. 3 of 14

PLAN	CHECKED	CHECKED
BY		
DATE		

PROFILE	CHECKED	CHECKED
BY		
DATE		

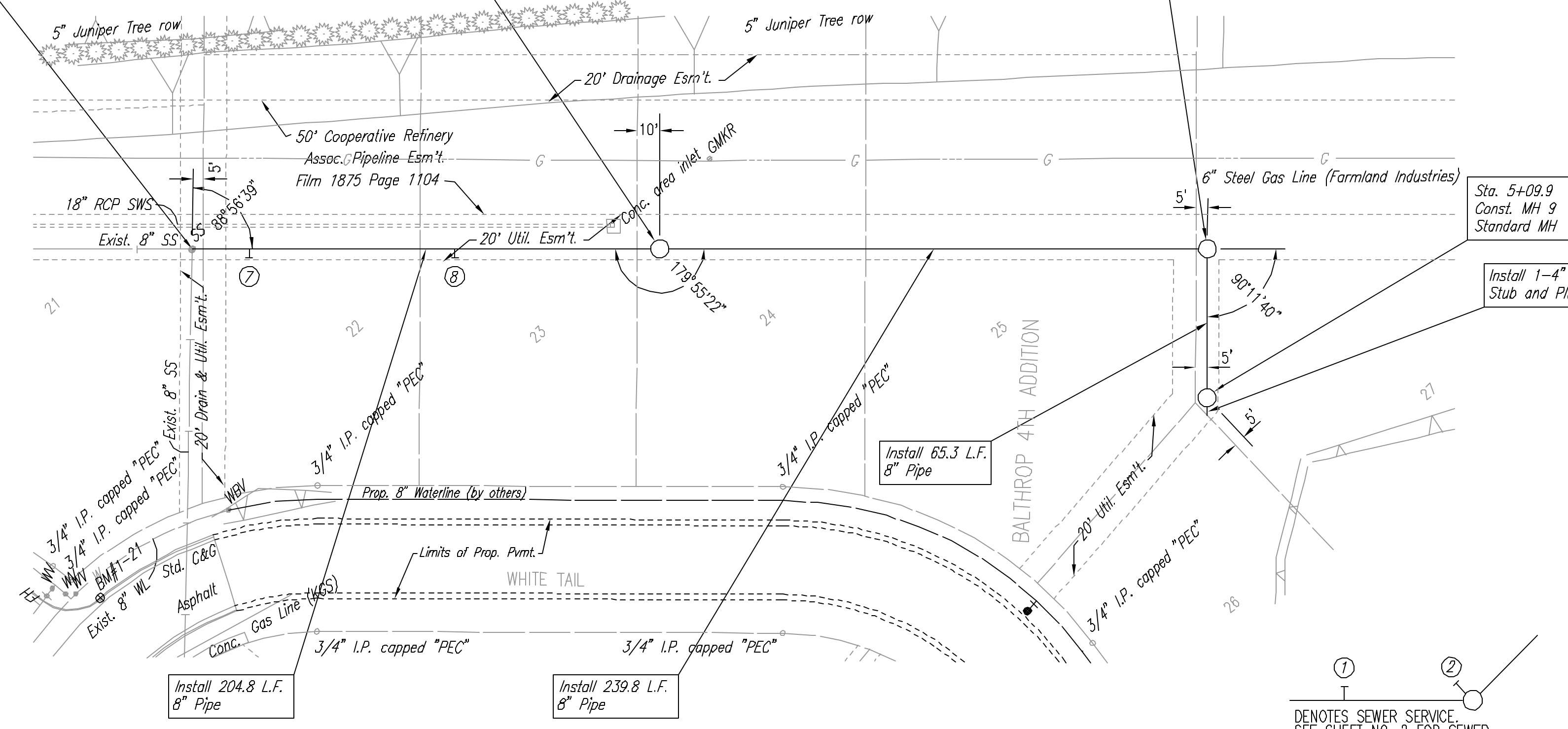
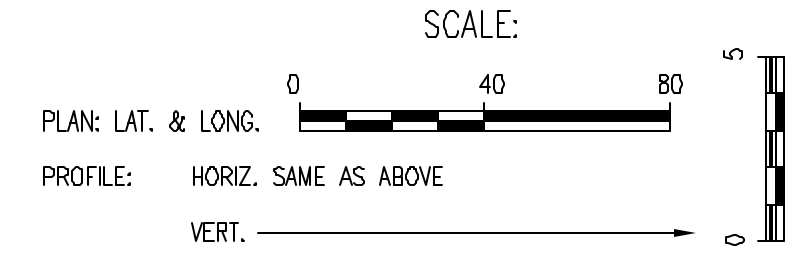
DSNR: MDK OPER: JGA SCALE: 1=40.00
 Q:\2002\02608\001\SSPP03 01-07-2003 05:15:52 pm

Sta. 0+00.0
 Existing Concrete MH*
 Remove Plug and connect New
 8" Pipe to existing 8" Stub.
 Contractor shall reshape invert
 to provide smooth flow as required.

Sta. 2+04.8
 Const. MH 7
 Standard MH

Sta. 4+44.6
 Const. MH 8
 Standard MH

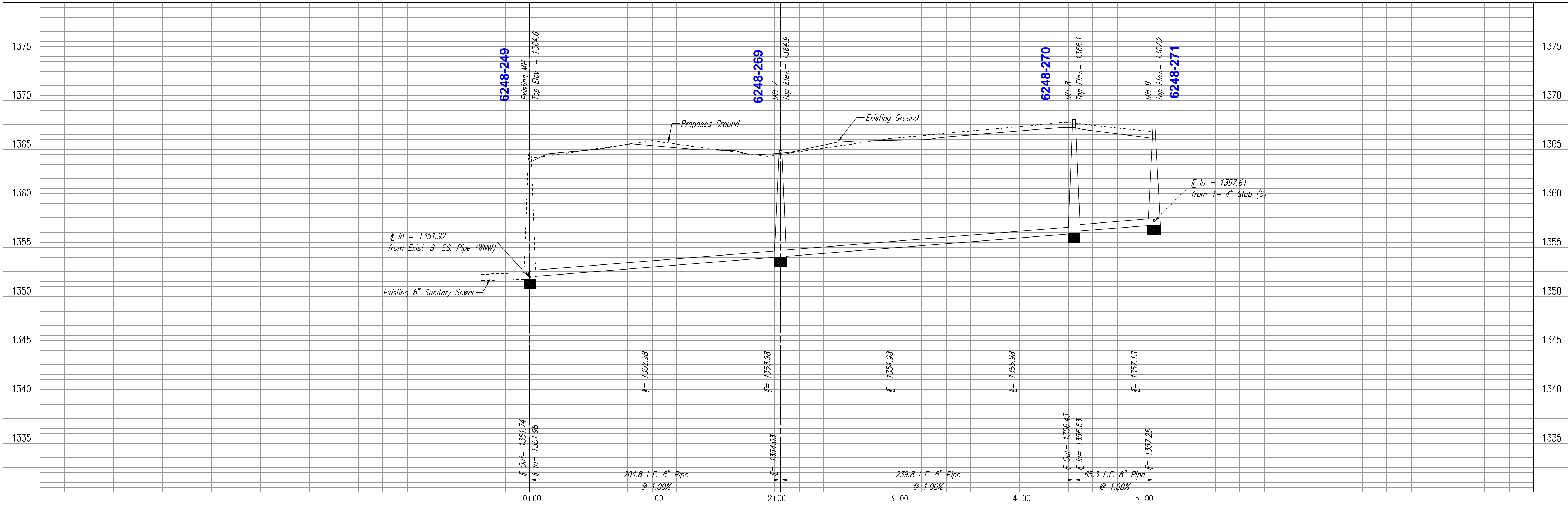
Sta. 5+09.9
 Const. MH 9
 Standard MH



* PRIOR TO BEGINNING CONSTRUCTION, THE CONTRACTOR SHALL EXCAVATE THE EXISTING 8" PVC PIPE AT SANITARY STATION 0+00.0 TO VERIFY ITS HORIZONTAL AND VERTICAL LOCATION. THE PIPE LOCATION SHALL BE REPORTED TO THE ENGINEER SO THAT ANY NECESSARY PLAN MODIFICATIONS CAN BE MADE. ANY ADDITIONAL LABOR OR MATERIALS NECESSARY TO COMPLETE THE CONNECTION SHALL BE CONSIDERED SUBSIDIARY TO THE PROJECT.

DENOTES SEWER SERVICE. SEE SHEET NO. 2 FOR SEWER SERVICE SCHEDULE.

LINE NO. 3



LATERAL 328 OF THE
 FOUR MILE CREEK SEWER
 LINE NO. 3

NEIL D. CABLE, P.E. - CITY ENGINEER
 CITY OF WICHITA, PROJECT NO. 488-83391

Professional Engineering Consultants, P.A.
 808 S. TOPICKA • WICHITA, KANSAS 67202
 316-262-2691 • FAX 316-262-3003

Designed By: MDK
 Drawn By: JGA
 Job No.: 35-02608-001
 Date: January 2003

Sheet 6 of 14