

# SAMRA 2ND ADDITION

SEDGWICK COUNTY, KANSAS

State of Kansas } ss. Mc. Baughman Company, P.A. Surveyors in aforesaid county and state do hereby certify that we have surveyed and platted "SAMRA 2ND ADDITION", Sedgwick County, Kansas and that the accompanying plat is a true and correct exhibit of the property surveyed described as the south 282 feet of the east 231.7 feet of the S.E. 1/4 of Sec. 16 Twp. 27-S, R. 2-E, of the 4th P.M., Sedgwick County, Kansas.

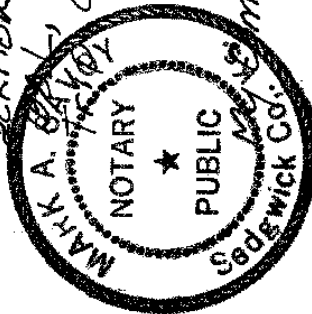


Date 7-21-81  
 at Baughman Company, P.A.  
William L. Korber Surveyor  
 WILLIAM L. KORBER

Known to all men by these presents that we the undersigned, have caused the land described in the surveyors certificate to be platted into a lot, a block, and streets to be known as "SAMRA 2ND ADDITION", Sedgwick County, Kansas. The streets are hereby dedicated to and for the use of the public. All abutters rights of access to or from Central Ave. over and across the south line of Lot 1, and to or from Greenwich Road over and across the east line of Lot 1, are hereby granted to the appropriate governing body, provided however that Lot 1 shall have access to Central Ave. at 1 point over all but the east 40 feet and shall have access to Greenwich Road at 1 point over all but the south 40 feet all as shall be determined by the appropriate governing body.

Quik, Trip Corporation  
William A. Bell Assistant Secretary  
 WILLIAM A. BELL

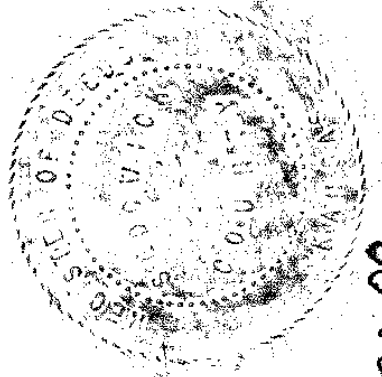
State of Kansas } ss. The foregoing instrument was acknowledged before me, this 21st day of July, 1981, by William A. Bell, Assistant Secretary of Quik Corporation.



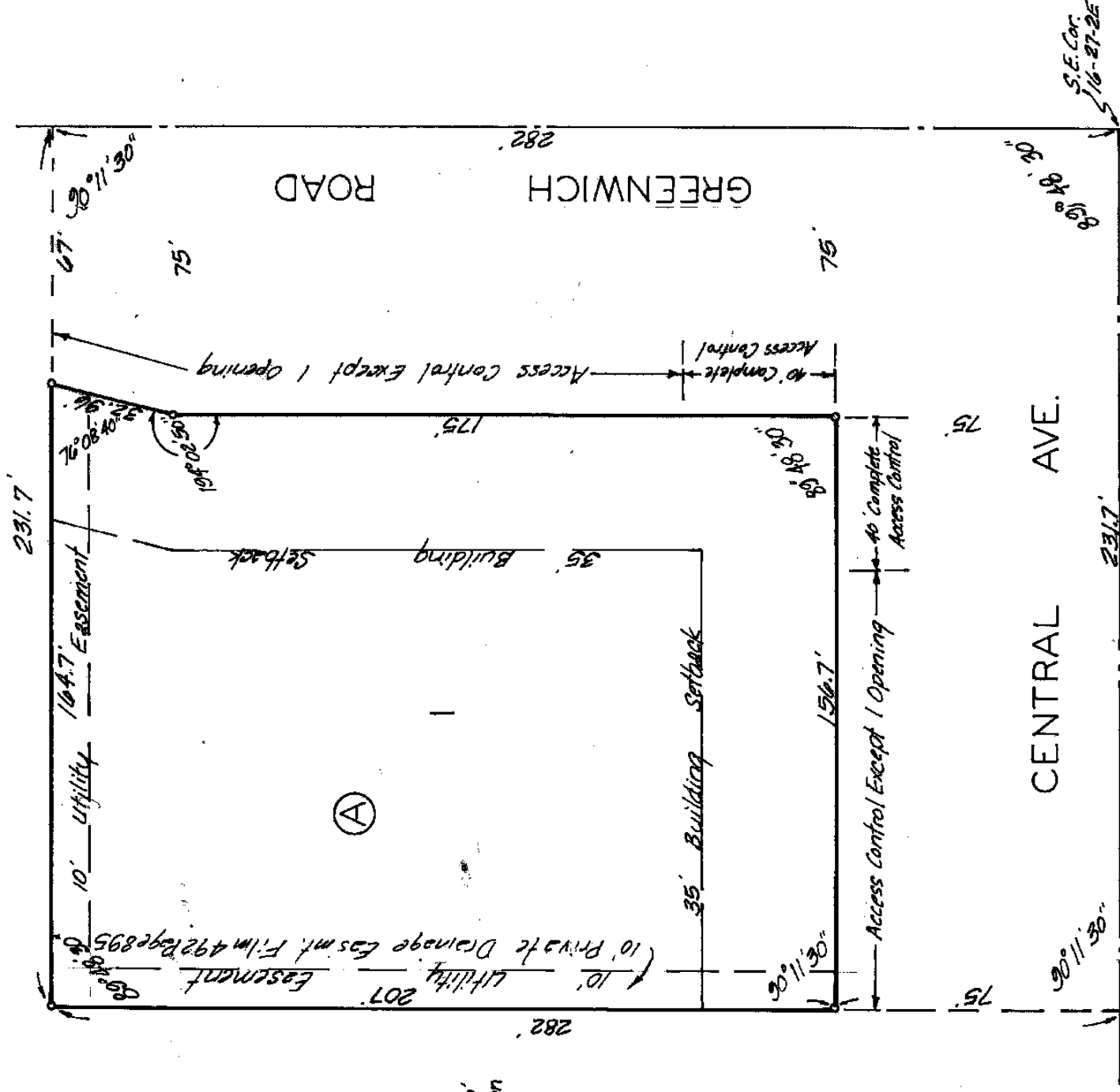
Mark A. Bell Notary Public  
 MARK A. BELL

Entered on transfer record this 23rd day of September, 1981.  
Claretha K. White County Clerk  
 CLARETHA K. WHITE  
 By Michael T. Sawyer Deputy  
 MICHAEL T. SAWYER

State of Kansas } ss. This is to certify that this plat has been filed for record in the office of the Register of Deeds, this 23rd day of SEPTEMBER, 1981, at 2:00 o'clock P.M. and is duly recorded.



Robert J. Papp Register of Deeds  
 ROBERT J. PAPP  
Pat. Kettler Deputy  
 PAT. KETTLER



This plat of "SAMRA 2ND ADDITION", Sedgwick County, Kansas, has been submitted to and approved by the Wichita-Sedgwick County Metropolitan Area Planning Commission, Wichita, Kansas. Dated this 9th day of April, 1981.

Wichita-Sedgwick County Metropolitan Area Planning Commission

Robert A. Caber Chairman  
Robert A. Caber Secretary

This plat approved and all platations shown hereon accepted by the Board of Commissioners of the City of Wichita, Kansas, this 8th day of SEPTEMBER, 1981.

Donald C. Shrago Chairman  
 DONALD C. SHRAGO  
Donald C. Shrago Secretary

#555776

This plat approved and all platations shown hereon accepted by the Board of Commissioners, Sedgwick County, Kansas, this 23rd day of SEPTEMBER, 1981.

Claretha K. White County Clerk  
 CLARETHA K. WHITE  
Michael T. Sawyer Deputy  
 MICHAEL T. SAWYER

Robert J. Papp Commissioner  
 ROBERT J. PAPP  
Pat. Kettler Commissioner  
 PAT. KETTLER